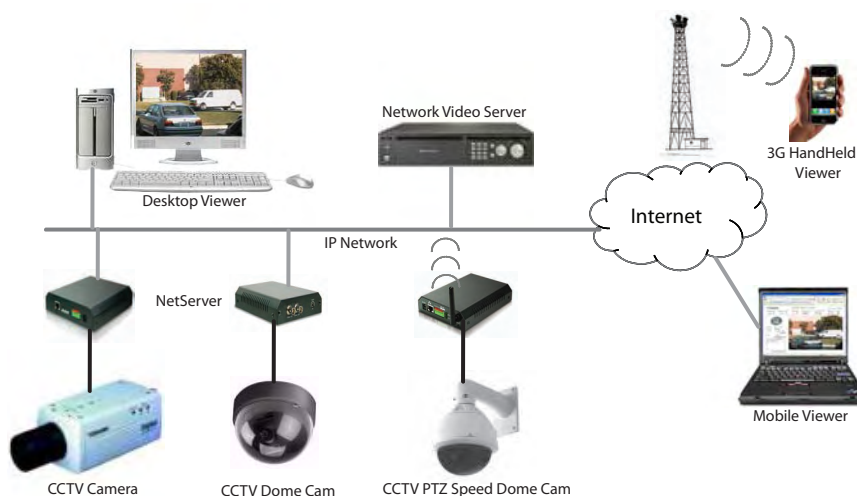




NetServer 6001 video server is designed to integrate analog CCTV security system into high quality of IP video network infrastructure. The benefit of adopting the NetServer is not only retain your analog investment but also it extends the capability of remote monitoring, best quality or video storage in the DVR or NVR.

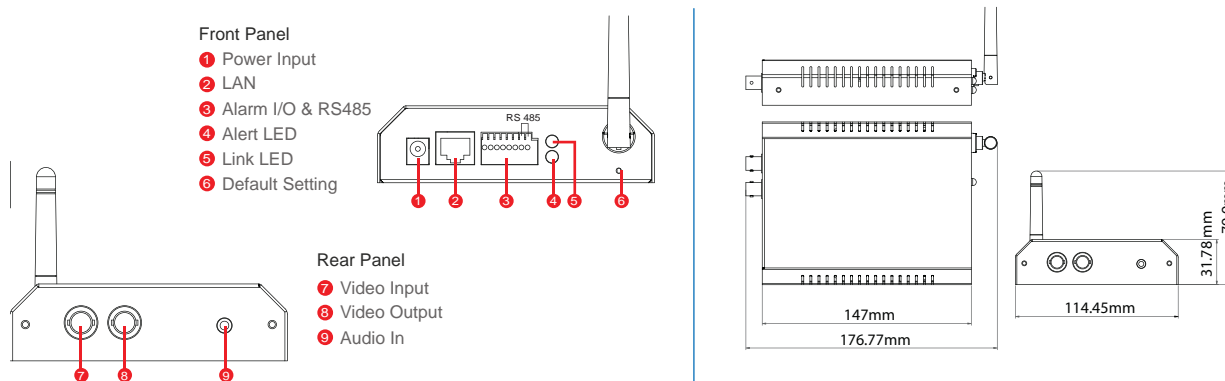
NetServer 6001 video server offers with capability of streaming either MPEG4 or MJPEG at your needs. It plugs directly into an Ethernet network and provides 24x7 video surveillance for increased confidence. NetServer 6001 video server can interface with PTZ camera, Dome Camera, or any camera, with motion detection sensor. It includes its own, built-in Web server that enhances traditional surveillance systems by distributing monitored images over a secure intranet network.

SecureNet family is smart and cost-effective solution for meeting the sophisticated demands expected of a modern interactive surveillance and remote monitoring system. It is simple to install - and easy to use.



Model Name	NetServer 6001	NetServer 6001P	NetServer 6001W
Ethernet	Yes	No	Yes
Power Over Ethernet	No	Yes	No
Wireless LAN	No	No	Yes
Power consumption	9W	10W	10W

Dimension Diagram



SecureNet NetServer 6001

MPEG4/MJPEG Dual Codec

SPECIFICATIONS

Video	
Video compression	MPEG4 / JPEG (dual codec), H.263(for 3GPP)
Video frame rate	Up to 30fps for all video resolutions
Compression rate selection	5 levels: best, better, normal, faster, fastest
Frame rate setting	PAL: 1, 2,3,4,5,6,12,25 ; NTSC: 1,2,3,4,5,6,7,10,15,30 fps
Video resolution	NTSC: 176x112, 320x240, 640x480, 704x480 PAL: 176x144, 352x240, 640x480, 704x576
Image rotation	Mirror / Up side down
Digital zoom	Yes, x 1/2, x1, x 2, x 4 times
Motion detection	Yes
Audio	
Line in	PCM 8k sampling, 16-bit stereo
Communication	
LAN port	RJ-45, 10/100M auto-sensed, auto crossover
Communication protocol	HTTP, RTSP, FTP, SMTP, TCP/IP, UDP, ARP, ICMP, DHCP, PPPoE, DDNS, UPnP, SAMBA, 3GPP
Video Streaming	Multicasting / RTSP / Over HTTP
System	
CPU	32bit RISC CPU
RAM	32MB
Flash ROM	4MB
OS	uCLinux
I/O	
Alarm Input	2
Alarm output	1
Analog video input	1 x BNC
Analog video output	1 x BNC (pass through)
Analog audio input	1 x 3.5mm Jack
PTZ camera control	1x RS-485
Ethernet	1x RJ45
Software	
Browser	Internet Explorer 6.0 or above
Application Software	CentaView application software
OS supported	Microsoft Windows 2000, XP
Software Features	
1. System	Name LED Control : ON/OFF/FLASH
2. TCP/IP	Static IP Address - IP Address - Subnet Mask - Default Gateway Dynamic IP Address - DHCP - PPPoE -User ID -User Password Primary DNS Address Secondary DNS Address Dynamic DNS UPnP IP filter
3. Users	Three levels Administrator / Operator / Viewer
4. Date/ Time Setting	Date: Year/Month/Day Time: Hour/Minute/Second NTP Protocol NTP Server Address Time Zone

5. Video	
Compressing Rate	5 levels: best, better, normal, faster, fastest
Frame Rate:	NTSC: 1,2,3,4,5,6,7,10,15,30 fps; PAL: 1, 2,3,4,5,6,12,25
Video Resolution	NTSC: 176x112, 320x240, 640x480, 704x480 PAL: 176x144, 352x240, 640x480, 704x576
Brightness Control	Yes
Contrast Control	Yes
6. Upload configuration	
	FTP SMTP SAMBA
7. Dynamic DNS	
	Service User Name Password Domain Name
8. Motion Detection	
	Motion Sensitivity Motion mask is easily set
9. Events	
	Video loss Reboot Motion detection Alarm-in Schedule
10. Triggered Actions	
	Send video e-mail Upload video file to ftp server Save video file to network share Send notification to specified TCP/HTTP server Control camera to preset location Turn on alarm output
11. P / T Control	
	Pan / Tilt driver can be uploaded and changed dynamically Supports pelco and A-Linking protocols
12. Open API	
	CGI commands to control camera Media SDK to handle streaming
13. Other	
	Reset to factory default setting
Power	
Power	DC 12V, 1.5A, switching type power supply
Power consumption	10W (800mA x 12V), maximum
LED	
Link LED	Green color
Alert LED	Green color
Size	
Main body	176mm(L) x 114mm(W) x 32mm(H)
Operating environment	
Operating temperature	5°C ~ 40°C
Storage temperature	-20°C ~ 50°C
Humidity	10% ~ 80% non-condensing
EMI	
	FCC / CE class B

ORDERING INFORMATION

Model Name	Description
NetServer 6001	Standard Video Server with Ethernet Interface
NetServer 6001P	Video Server with Power Over Ethernet Interface
NetServer 6001W	Video Server with Ethernet and Wireless Interface



A Communication Division of UIC Corporation

47709 Fremont Blvd, Fremont, CA 94538 USA · Phone 408.435.8388 · Website www.asante.com

© 2008 Asante - a Division of UIC Corporation. All rights reserved. Asante and FriendlyNET are trademarks of UICUSA. All other names may be trademarks or registered trademarks of their respective owners. Specifications subject to change without prior notice.

Free Manuals Download Website

<http://myh66.com>

<http://usermanuals.us>

<http://www.somanuals.com>

<http://www.4manuals.cc>

<http://www.manual-lib.com>

<http://www.404manual.com>

<http://www.luxmanual.com>

<http://aubethermostatmanual.com>

Golf course search by state

<http://golfingnear.com>

Email search by domain

<http://emailbydomain.com>

Auto manuals search

<http://auto.somanuals.com>

TV manuals search

<http://tv.somanuals.com>