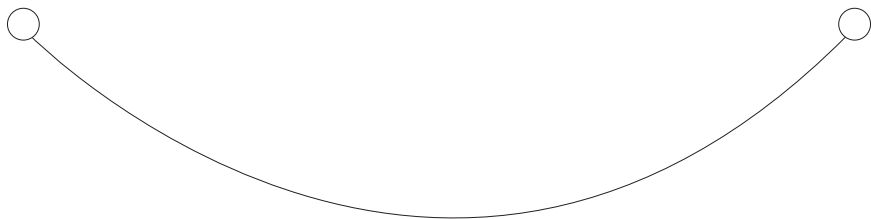


Don't plug me in just yet.



We need to do a few things first to get your computers ready to transfer your files and user accounts.





1

Prepare your old computer

2

Run **Microsoft Windows Easy Transfer**

3

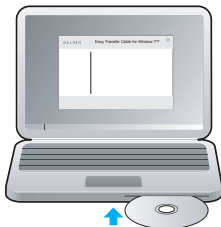
Connect your **Belkin Easy Transfer Cable**

You will then be able to transfer your files and user accounts.

1

Prepare your old computer

Source



Computer with Windows XP or
Windows Vista®



Destination



Computer with Windows 7

1. Insert the **CD** into your old computer.
2. Locate the CD drive on "My Computer".
3. Double-click the "**Belkin Easy Transfer Cable for Win7**" software icon and follow the on-screen prompts.

Note: You do not need to install this software on your Windows 7 computer.



4. Select "**Next**" on your old computer.

This program is now verifying the operating system compatibility and installing **Windows Easy Transfer** on to your computer.

Note: If your operating system is not currently compatible, you will be prompted to install Windows Service Pack SP2 for Windows XP or SP1 for Windows Vista.

BELKIN.

Easy Transfer Cable for Windows 7™

Ready



1 Prepare your old computer

2 Run Microsoft Windows Easy Transfer™

3 Connect your Belkin Easy Transfer Cable™

Microsoft Windows Easy Transfer™ software is now Installed

Open the Microsoft Windows Easy Transfer™ software on both PC's to move your files. The software will prompt you when to connect this PC to your PC running Windows 7™ with the Belkin Easy Transfer Cable™.

For more information, please refer to the **Quick Start Guide**.

Finish



5. Select “**Finish**” on your old computer.

Note: If your computer prompts you to restart, select “Yes” and continue.



1

Prepare your old computer

2

Run **Microsoft Windows Easy Transfer**

3

Connect your **Belkin Easy Transfer Cable**

You will then be able to transfer your files and user accounts.

2

Run Microsoft Windows Easy Transfer

Source



Computer with Windows XP
or
Windows Vista

Destination



Computer with Windows 7



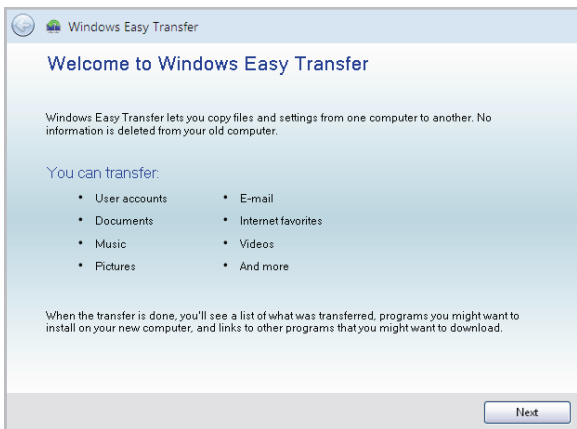
1. Launch **Windows Easy Transfer** on both computers.

For computers with Windows XP or Windows Vista:

[Start > Programs > Windows Easy Transfer](#)

For computers with Windows 7:

[Start > Search programs and files](#)
type: [Windows Easy Transfer](#)

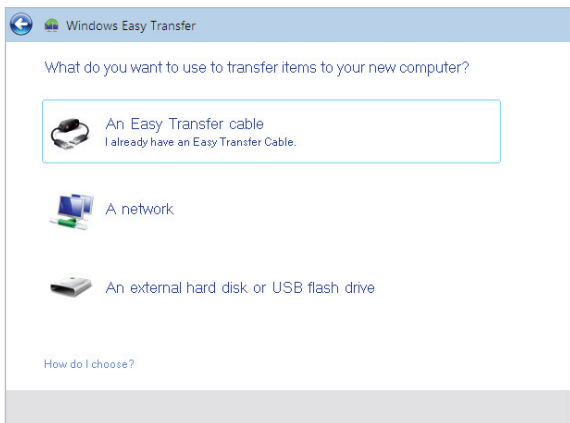


2. Select “Next” on both computers.

Computer with Windows XP
or
Windows Vista



Computer with
Windows 7



3. Select **An Easy Transfer Cable** on both computers.

Computer with Windows XP
or
Windows Vista



Computer with
Windows 7

Source



Computer with Windows XP
or
Windows Vista

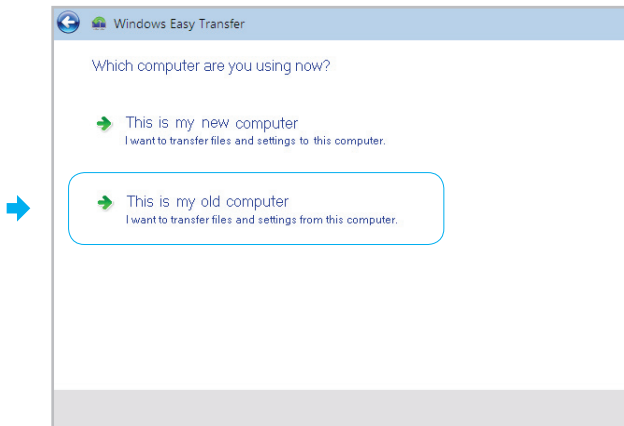


Destination



Computer with
Windows 7

4. Go to your old computer.



5. Select **“This is my old computer”**.



Source



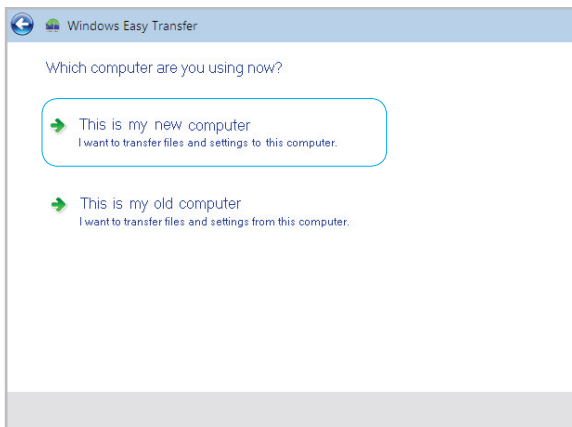
Destination



Computer with Windows XP
or
Windows Vista

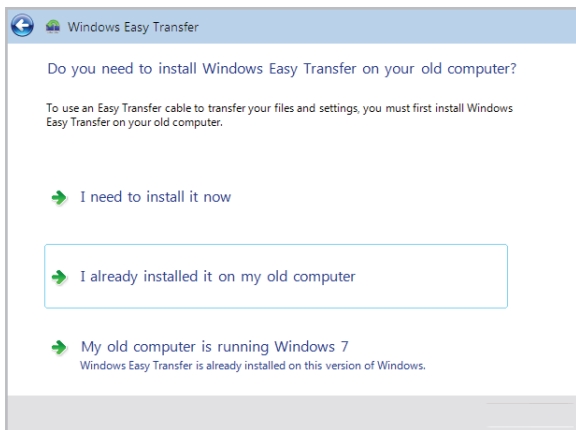
Computer with
Windows 7

6. Go to your computer running Windows 7.



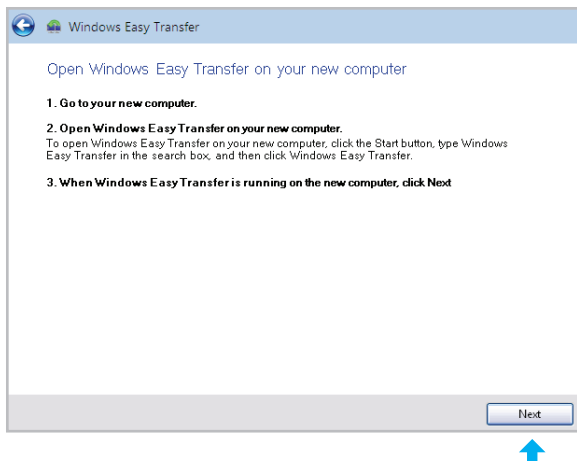
7. Select **“This is my new computer”**.





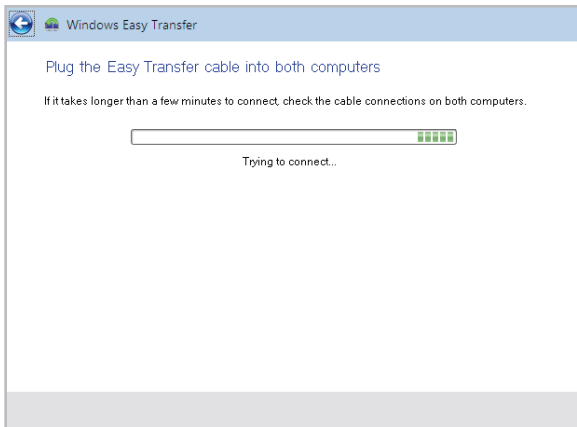
8. Select **“I already installed it on my old computer”**.





9. Select "Next" on both computers.





10. When you see this screen, you are now ready to connect your **Belkin Easy Transfer Cable** to each computer.





1

Prepare your old computer

2

Run **Microsoft Windows Easy Transfer**

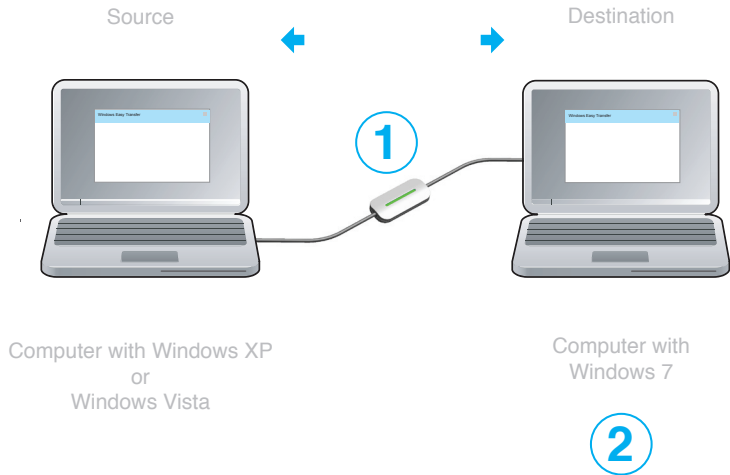
3

Connect your **Belkin Easy Transfer Cable**

You will then be able to transfer your files and user accounts.

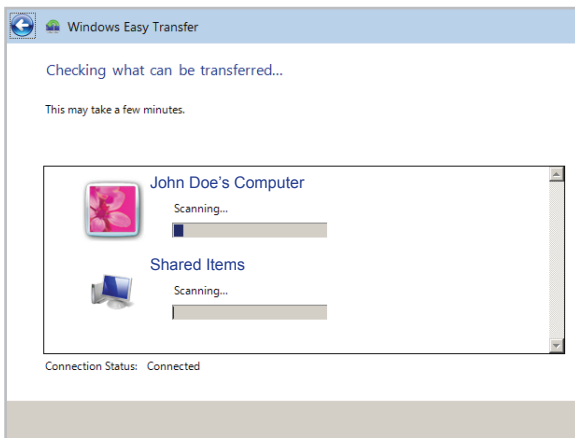
3

Connect your **Belkin Easy Transfer Cable**

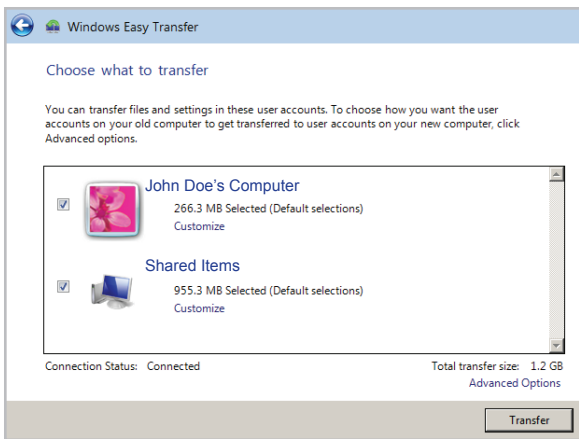


1. Connect your **Belkin Easy Transfer Cable** to each computer using any available USB port.
2. Use your Windows 7 computer to transfer your files and user accounts.

Using Windows Easy Transfer



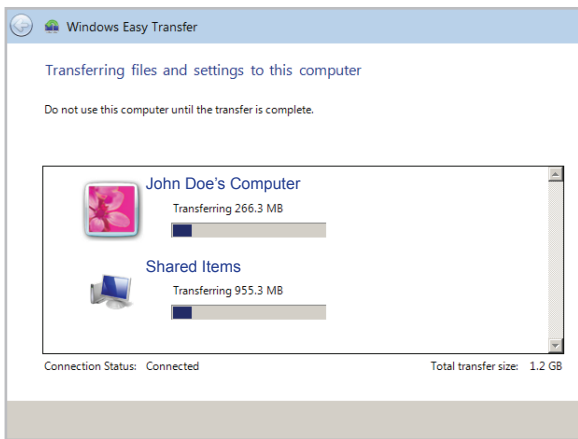
1. Your Windows 7 computer will scan your old computer to determine which files can be transferred.



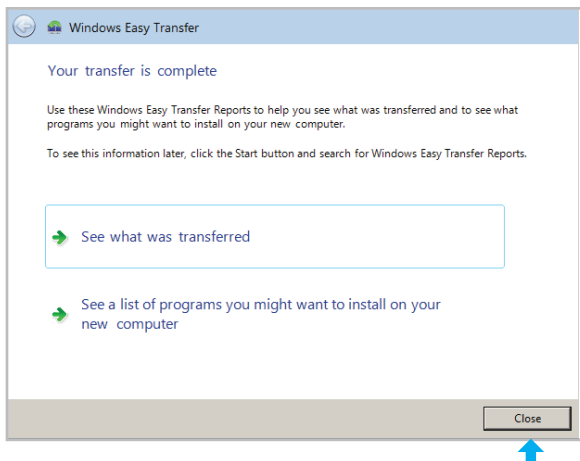
2. You may now select what you would like to transfer from your old computer on to your new computer.

To accept the defaults click **“Transfer”** to continue.

If you would like to customize what is transferred, select **“Customize”**, or to modify how user accounts are transferred, select **“Advanced Options”**.



3. Your Windows 7 computer will now transfer your files and user accounts.



4. The transfer is now complete. Click “**Close**” to finish.

You may review what files were transferred by selecting “See what was transferred”.

Windows Easy Transfer does **not** transfer any programs or applications. Any programs or applications will have to be reinstalled on your Windows 7 computer.

Questions?

Q: How do I get the Belkin Easy Transfer Cable to transfer applications and programs?

A: Windows Easy Transfer currently does not support the transfer of applications or programs.

Q: Why isn't the Windows Easy Transfer software loading?

A: Go to "Start > Programs" and locate the entry for "Windows Easy Transfer". Click on this entry to launch the software and continue with the steps for using Windows Easy Transfer software. For Windows 7 computers, click "Start" and then enter "Windows Easy Transfer" in the "Search programs and files" dialog box.

Q: My user account info and settings did not transfer.

A: User account info and settings cannot be transferred if the source and destination operating systems are in different languages.

Other questions?

Please visit our website at:

<http://www.belkin.com/easytransfercable/>

System Requirements



Computer with Windows XP
or
Windows Vista

- Pentium® processor-based computer
- An available USB port
- Windows XP Service Pack 2 or Windows Vista Service Pack 1
- 40MB hard-disk space
- CD-ROM drive



Computer with
Windows 7

- Pentium processor-based computer
- An available USB port
- Windows 7

Information

Federal Communication Commission Interference Statement Subpart B DECLARATION OF CONFORMITY WITH FCC RULES FOR ELECTROMAGNETIC COMPATIBILITY

We, Belkin International, Inc., of 501 West Walnut Street, Compton, CA 90220, declare under sole responsibility that the product:

F5U279

To which this declaration relates:

Has been tested and found to comply with the limits for a Class B digital device, pursuant to Part 15 of the FCC Rules. These limits are designed to provide reasonable protection against harmful interference in a residential installation. This equipment generates uses and can radiate radio frequency energy and, if not installed and used in accordance with the instructions, may cause harmful interference to radio communications. However, there is no guarantee that interference will not occur in a particular installation. If this equipment does cause harmful interference to radio or television reception, which can be determined by turning the equipment off and on, the user is encouraged to try to correct the interference by one of the following measures:

- Reorient or relocate the receiving antenna.
- Increase the separation between the equipment and receiver.
- Connect the equipment into an outlet on a circuit different from that to which the receiver is connected.
- Consult the dealer or an experienced radio/TV technician for help.

This device complies with Part 15 of the FCC Rules. Operation is subject to the following two conditions: (1) This device may not cause harmful interference, and (2) this device must accept any interference received, including interference that may cause undesired operation.

FCC Caution: Any changes or modifications not expressly approved by the party responsible for compliance could void the user's authority to operate this equipment.

CE Declaration of Conformity

We, Belkin International, Inc., declare under our sole responsibility that the F5U279, to which this declaration relates, has been tested and found compliant to EMC Council Directive 2004/108/EC. The tests results are contained in test report kept on file in the department and are available upon request.

Applicable Standard(s) used in demonstrating compliance to the CE requirements are:
EN55022: 2006 (Class B)
EN55024: 1998 + A1: 2001 + A2: 2003

Belkin International, Inc., Limited Lifetime Product Warranty

What this warranty covers.

Belkin International, Inc. ("Belkin") warrants to the original purchaser of this Belkin product that the product shall be free of defects in design, assembly, material, or workmanship.

What the period of coverage is.

Belkin warrants the Belkin product for the lifetime of the product.

What will we do to correct problems?

Product Warranty.

Belkin will repair or replace, at its option, any defective product free of charge (except for shipping charges for the product). Belkin reserves the right to discontinue any of its products without notice, and disclaims any limited warranty to repair or replace any such discontinued products. In the event that Belkin is unable to repair or replace the product (for example, because it has been discontinued), Belkin will offer either a refund or a credit toward the purchase of another product from Belkin.com in an amount equal to the purchase price of the product as evidenced on the original purchase receipt as discounted by its natural use.

What is not covered by this warranty?

All above warranties are null and void if the Belkin product is not provided to Belkin for inspection upon Belkin's request at the sole expense of the purchaser, or if Belkin determines that the Belkin product has been improperly installed, altered in any way, or tampered with. The Belkin Product Warranty does not protect against acts of God such as flood, earthquake, lightning, war, vandalism, theft, normal-use wear and tear, erosion, depletion, obsolescence, abuse, damage due to low voltage disturbances (i.e. brownouts or sags), non-authorized program, or system equipment modification or alteration.

2. Your Belkin Customer Service Representative will then instruct you on how to forward your receipt and Belkin product and how to proceed with your claim.

Belkin reserves the right to review the damaged Belkin product. All costs of shipping the Belkin product to Belkin for inspection shall be borne solely by the purchaser. If Belkin determines, in its sole discretion, that it is impractical to ship the damaged equipment to Belkin, Belkin may designate, in its sole discretion, an equipment repair facility to inspect and estimate the cost to repair such equipment. The cost, if any, of shipping the equipment to and from such repair facility and of such estimate shall be borne solely by the purchaser. Damaged equipment must remain available for inspection until the claim is finalized. Whenever claims are settled, Belkin reserves the right to be subrogated under any existing insurance policies the purchaser may have.

How state law relates to the warranty.

THIS WARRANTY CONTAINS THE SOLE WARRANTY OF BELKIN. THERE ARE NO OTHER WARRANTIES, EXPRESSED OR, EXCEPT AS REQUIRED BY LAW, IMPLIED, INCLUDING THE IMPLIED WARRANTY OR CONDITION OF QUALITY, MERCHANTABILITY OR FITNESS FOR A PARTICULAR PURPOSE, AND SUCH IMPLIED WARRANTIES, IF ANY, ARE LIMITED IN DURATION TO THE TERM OF THIS WARRANTY.

Some states do not allow limitations on how long an implied warranty lasts, so the above limitations may not apply to you.

IN NO EVENT SHALL BELKIN BE LIABLE FOR INCIDENTAL, SPECIAL, DIRECT, INDIRECT, CONSEQUENTIAL OR MULTIPLE DAMAGES SUCH AS, BUT NOT LIMITED TO, LOST BUSINESS OR PROFITS ARISING OUT OF THE SALE OR USE OF ANY BELKIN PRODUCT, EVEN IF ADVISED OF THE POSSIBILITY OF SUCH DAMAGES.

This warranty gives you specific legal rights, and you may also have other rights, which may vary from state to state. Some states do not allow the exclusion or limitation of incidental, consequential, or other damages, so the above limitations may not apply to you.

In this box



Package Includes

- Quick Start Guide
- CD with Microsoft Windows Easy Transfer software
- Belkin Easy Transfer Cable for Windows 7

BELKIN

www.belkin.com

Belkin International, Inc.

Los Angeles, CA 90220, USA
310.898.1100

Belkin Ltd.

Tuggerah, Australia
+61 (0) 2 4350 4600

Free Manuals Download Website

<http://myh66.com>

<http://usermanuals.us>

<http://www.somanuals.com>

<http://www.4manuals.cc>

<http://www.manual-lib.com>

<http://www.404manual.com>

<http://www.luxmanual.com>

<http://aubethermostatmanual.com>

Golf course search by state

<http://golfingnear.com>

Email search by domain

<http://emailbydomain.com>

Auto manuals search

<http://auto.somanuals.com>

TV manuals search

<http://tv.somanuals.com>