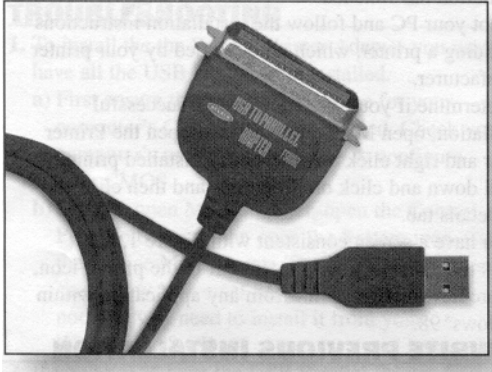




USB Parallel Printer Adapter



Packing Checklist

- (1) One Belkin USB Parallel Printer Adapter with connectors for USB type A port and a Centronics 36 male port
- Floppy Disk Installation Software
- User Guide

Please read this manual thoroughly and follow the procedures to prevent any damage to the USB Parallel Printer Adapter and/or to the connected devices.

F5U002

Introduction

The Belkin Components USB Parallel Printer Adapter will allow any Windows® 98 PC equipped with a USB port to print to any parallel printer. USB allows the connection of up to 127 devices to a single PC. Simply plug the USB connector into the computer USB port and the Centronics connector into the appropriate printer. This installation procedure automatically detects the adapter and sets up your system to use your printer device every time your computer is started.

The Belkin USB Parallel Printer Adapter is also supported by a one year warranty and free technical support should you have any questions about installing or using the USB Parallel Printer Adapter.

Product Features

Hardware Requirements

- IBM 486 compatible processor or higher
- USB port

Operating Systems Requirements

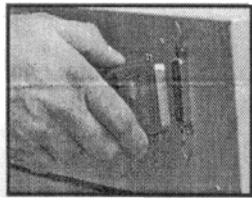
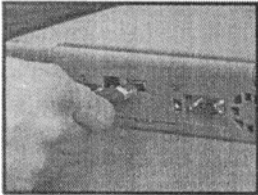
This software runs in Windows® 95, and Windows® 98 and Windows® 98SE. Windows® 95 must be OSR2.1 version 1214 which contains the USB supplement.

Overview

Installation of the Belkin USB Parallel Printer Adapter involves 10 easy steps to connect the adapter to your computer. Each step is explained in detail in the following section entitled "New Installation". If the Belkin USB Parallel Printer Adapter has never been installed on the PC before, then go to the following NEW INSTALLATION section. If an installation has been completed or attempted previously, then follow the instructions in the OVERWRITE PREVIOUS INSTALL section followed by the instructions in the NEW INSTALLATION section.

NEW INSTALLATION

1. First install your printer on the parallel port like a normal printer installation. (LPT1)
2. When you turn on your computer. Make sure the Belkin USB Parallel Printer Adapter is **NOT** plugged into your PC.
3. Turn on your PC and wait until your system has completely booted.
4. Locate the USB Parallel Printer Adapter installation Disk and insert it into the floppy drive.
5. Turn on your printer and plug the Belkin USB Parallel Printer Adapter into your printer.



6. Plug the Belkin USB Parallel Printer Adapter into a free USB port on

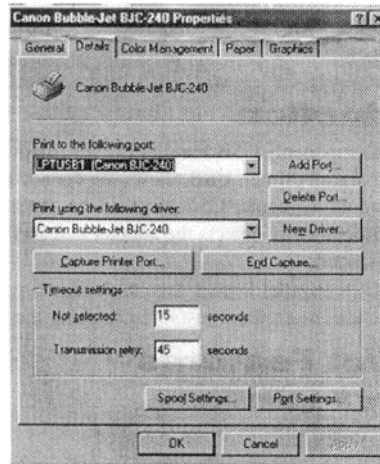
your PC, or a USB port on your USB hub. Windows will inform you that it has detected new hardware and is installing software support for it. It may prompt you for the Windows® 95 or Windows® 98 CD. **DO NOT insert this CD.** The Belkin disk will work to complete the installation.

7. The "Add New Hardware Wizard" will prompt you through the next several installation steps outlined below:
 - a) The first window will prompt you to search for the Parallel Printer Adapter drivers. To begin the search, click Next.
 - b) Next, you will be asked where you would like Windows® to search for the Parallel Printer Adapter drivers. The default is the floppy drive and CD-ROM drive. Put a check mark on, "Specify location and type, a:\win98 or a:\win95

- c) The next window will tell you that Windows® is now ready to install the best drivers for the Parallel Printer Adapter. Click Next to install the drivers.
 - d) The next window will tell you that Windows® has finished installing the software. Click Finish.
8. Then click on, "Start", "Programs", "Belkin", "F5U002", "Changebi". In the drop down menu choose the printer you are using and select, "Disable Bi-directional Printing". The computer will then ask you to reboot, click **Yes** and remove the floppy disk from the drive.
 9. To determine if you have completed a successful installation, open My Computer, then open the Printer folder and right click on your newly installed printer. Scroll down and click on Properties and then click on the Details tab.
 10. If you have a screen consistent with Figure 1 (LPTUSB1) but it shows the name of your printer next to the printer icon, (it will sometimes state, unknown printer if the printer is an older model)
 11. If not use your drop down menu to choose the (LPTUSB1) port and then **Apply**. You are now ready to print from any application within Windows® 98.

OVERWRITE PREVIOUS INSTALLATION

Figure 1



If for some reason your first installation attempt is unsuccessful, we suggest you try the following procedure:

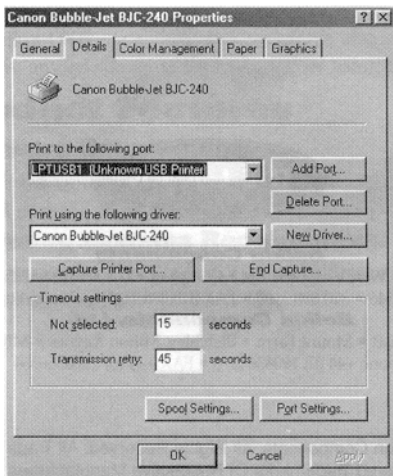
1. Unplug the Belkin USB Parallel Printer Adapter from your PC.
2. Click on the Start menu located at the bottom left corner of your screen then settings to, Control Panel. Double click on add/remove programs.
3. Look for, "Belkin USB Parallel Printer Adapter software.
4. Click on the Adapter and then click on Remove., then done.

5. To complete the uninstall, you will be asked to reboot your computer. Click Yes to reboot your computer now. Once you reboot you will not have to reboot where indicated in Step 2 of the installation instructions.
6. Proceed with the installation instructions beginning with Step 3 to reinstall the Parallel Printer Adapter.

TROUBLESHOOTING

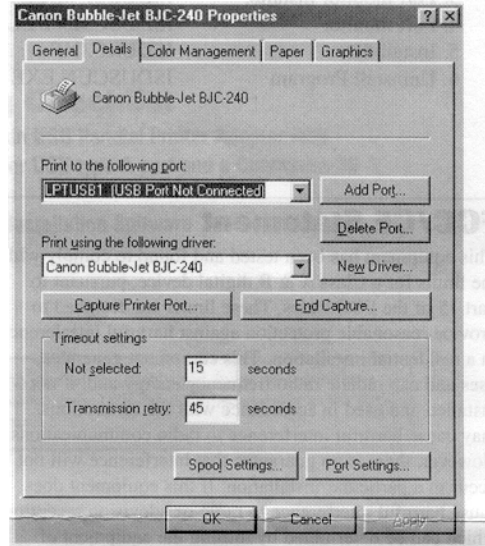
1. To install the Parallel Printer Adapter you must have all the USB components installed.
 - a) First ensure that the USB interface for your computer's CMOS has been enabled. Check your computer's user manual on how to configure your CMOS.
 - b) Second, open My Computer, open the Control Panel folder and then open the System icon. Click the Device Manager tab. The last device you see should say Universal Serial Bus controller. If not, you will need to install it from your Windows® 98 CD.
2. If you already have the USB Parallel Printer Adapter installed and you are updating to Windows® 98, then return to the section entitled Overwrite Previous Installation,
3. If the Device ID cannot be retrieved from the printer as shown in Figure 2, reinstall your printer with the printer manufacturer's software on the parallel port(LPT1) like a normal printer installation.

Figure 2



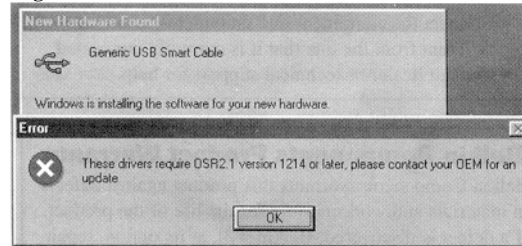
4. If the USB Parallel Printer Adapter is not plugged in, you will see the message under the "Print to the following port" box in Figure 3. Plug the Belkin USB Parallel Printer Adapter into the printer as show in Step 4 of New Installation.

Figure 3



5. If the error message appears in Figure 4, simply update your Windows® operating system to Windows® 98.

Figure 4



6. If you are still unable to print, the drivers for your printer may not support bi-directional printing through a USB to parallel adapter. For instructions on disabling bi-directional printing, please visit our web site at <http://www.belkin.com/support/hpbidi.html>

Software Components

The software necessary for standard PnP installation and operation of the USB Parallel Printer Adapter consist of the following:

- | | |
|---------------------------|--------------|
| 1. Class Installer | BPPU2PAR.SYS |
| 2. VVDM device driver | FU5002.INI |
| 3. Port monitor installer | ETKPRCI.DLL |
| 4. Port monitor | BPPMON.DLL |
| 5. Install file | F5U002A.INF |
| | F5U002.INF |
| 6. Uninstall Program | BPPUNIN1.EXE |

FCC/CE Statement

This equipment has been tested and found to comply with the limits for a Class A & B digital device, pursuant to part 15 of the FCC Rules. These limits are designed to provide reasonable protection against harmful interference in a residential installation. This equipment generates, uses and can radiate radio frequency energy and, if not installed and used in accordance with the instructions, may cause harmful interference to radio communications. However, there is no guarantee that interference will not occur in a particular installation. If this equipment does cause harmful interference to radio or television reception, which can be determined by turning the equipment off and on, the user is encouraged to try to correct the interference by one or more of the following measures:

- Reorient or relocate the adapter.
- Increase separation between the hub, computer, monitor and printer.
- *Connect the equipment into an outlet or a circuit different from the one that it is currently connected.
- Consult dealer or technical support for help.

Belkin Components Product Warranty

Belkin Components warrants this product against defects in materials and workmanship for the life of the product. If a defect is discovered, Belkin will, at its option, repair or replace the product at no charge, provided it is returned during the warranty period, with transportation charges prepaid, to the authorized Belkin dealer from whom you purchased the product. Proof of purchase may be required.

This warranty does not apply if accident, abuse, misuse, or misapplication has damaged the product; if the product has been modified without the permission of Belkin; or if any Belkin serial number has been removed or defaced.

CE Declaration of Conformity

We, Belkin Components, declare under our sole responsibility that the F5U002, to which this declaration relates, is in conformity with EUROPEAN STANDARD EN 55022/AI Class B, and EN 50082-1 (IEC 801-2, IEC 801-3, IEC 801-4).

THE WARRANTY AND REMEDIES SET FORTH ABOVE ARE EXCLUSIVE AND IN LIEU OF ALL OTHERS, WHETHER ORAL OR WRITTEN, EXPRESS OR IMPLIED. BELKIN SPECIFICALLY DISCLAIMS ANY AND ALL IMPLIED WARRANTIES, INCLUDING, WITHOUT LIMITATION, WARRANTIES OF MERCHANTABILITY AND FITNESS FOR A PARTICULAR PURPOSE.

No Belkin dealer, agent, or employee is authorized to make any modification, extension, or addition to this warranty.

BELKIN IS NOT RESPONSIBLE FOR SPECIAL, INCIDENTAL, OR CONSEQUENTIAL DAMAGES RESULTING FROM ANY BREACH OF WARRANTY, OR UNDER ANY OTHER LEGAL THEORY, INCLUDING BUT NOT LIMITED TO LOST PROFIT, DOWNTIME, GOODWILL, DAMAGE TO OR REPROGRAMMING, OR REPRODUCING ANY PROGRAM OR DATA STORED IN OR USED WITH BELKIN PRODUCTS.

Some states do not allow the exclusion or limitation of incidental or consequential damages or exclusions of implied warranties, so the above limitations of exclusions may not apply to you. This warranty gives you specific legal rights, and you may also have other rights that vary from state to state.



501 West Walnut Street - Compton - CA - 90220-5221
800.223.5546* 310.898.1100 - FAX 310.898.1111 *
www.belkin.com

Belkin Components, Ltd.

Clarke Road - Mount Farm - Bletchley, Milton Keynes * MK1 1LG
Phone +44 (0) 1908367178 * FAX +44 (0) 1908366564

©1999 Belkin Components. All Rights Reserved. All Trade Names Are Registered Trademarks Of Respective Manufacturers Listed.

P72670

Free Manuals Download Website

<http://myh66.com>

<http://usermanuals.us>

<http://www.somanuals.com>

<http://www.4manuals.cc>

<http://www.manual-lib.com>

<http://www.404manual.com>

<http://www.luxmanual.com>

<http://aubethermostatmanual.com>

Golf course search by state

<http://golfingnear.com>

Email search by domain

<http://emailbydomain.com>

Auto manuals search

<http://auto.somanuals.com>

TV manuals search

<http://tv.somanuals.com>