

NEOREST 600

MS990CG

NEOREST



* Thank you for your recent purchase of the TOTO Neorest.
Please read the enclosed information to ensure the safe use of your product.

Important Safety Instructions	2
Operational Instructions	5
Tips for Using the NEOREST 600....	6
Performance Features	7
Parts and Features	9
Before Using the NEOREST 600....	11

Introduction

How to Use the NEOREST 600.....	13
For Best Results	15
● Adjusting the Temperature	15
● Deodorizing	16
● Opening and Closing the Toilet Seat and Lid.....	17
● Flushing Water	20
To Conserve Energy	
● Using the Energy Saver Feature - "TIMER ON/OFF"	23
● Shutting Off Energy Saver Feature - "TIMER ON/OFF"	24
● Using the Energy Saver - "AUTO ON/OFF"	25
● Shutting Off the Energy Saver Feature - "AUTO ON/OFF"	27
● If You Are Using the "TIMER ON/OFF" and the "AUTO ON/OFF" Features at the Same Time	28

Operation

Caring for your NEOREST.....	29
● Before Cleaning the NEOREST.....	29
● Daily Care and Maintenance	30
● Thorough Cleaning of the Product..	31
● Other Care and Maintenance	34

Maintenance

Preventing Damage Due to Frozen Water Pipes.....	38
● How to Prevent Damage (Pipe Drain Method)	38
Troubleshooting	39
Specifications	46

Troubleshooting

Limited Warranty	47
------------------------	----

Important Safety Instructions

When using electrical products, especially when children are present, basic safety precautions should always be followed, including the following:

READ ALL INSTRUCTIONS BEFORE USING



DANGER

To reduce the risk of electrocution:

1. Do not use while bathing.
2. Do not place or store products where it can fall or be pulled into tub or sink.
3. Do not place in or drop into water or other liquid.
4. Do not reach for a product that has fallen into water. Unplug immediately.
5. Do not wash the main unit or power plug with water or detergent.
6. Do not handle the power plug with wet hands.
7. Discontinue use of a malfunctioning product.
 - If the following occurs, disconnect the power plug from the wall outlet, and turn the water shut off valve to prevent the flow of water.

Possible malfunctions:

- Water leaks from either the main unit or the water pipes.
- The product makes a strange noise or emits a strange odor.
- The product feels extremely hot.
- The product is cracked or broken.
- The product is smoking.

- Continued use of a malfunctioning product may result in fire or electrical shock or cause water damage.
8. Only use tap water or drinkable well water (ground water)
 - Use of water that is not safe for drinking may cause irritation or injury to the skin.
 9. Do not use a loose or faulty electrical outlet.
 10. This product should be used with 120V, 60Hz electrical current only.
 - Use of multi-prong outlet adapters with this product may result in overheating or fire.
 11. Avoid damaging the power plug or toilet seat cord.
 - Do not crack, bend, twist or pull the cords. Do not treat or heat the cords or place heavy objects on top of them.
 - Use of damaged power plug may result in a short circuit, electrical shock or fire.
 12. Improper use of heated toilet seats can result in a low-grade burn.
 - When sitting on the heated toilet seat for extended periods of time, turn the temperature setting to OFF.
 - Make sure that the temperature setting for the heated toilet seat has been set to the OFF position before being used by the following:
 - Young children, the aged or users who cannot perform appropriate setting of the temperature.
 - Sick or disabled users who do not have freedom of movement.
 - Users who are on medication that causes drowsiness.
 - Users that have consumed a great deal of alcohol or who are extremely tired and may fall asleep while using the toilet.



DANGER

To reduce the risk of electrocution:

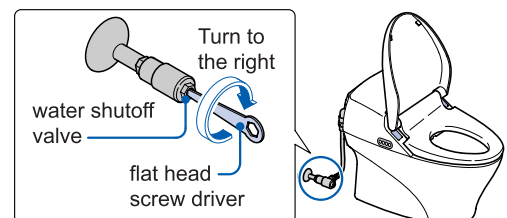
13. Periodically remove dust and dirt from the power plug and make sure they are tightly plugged into the wall outlet.
 - Failure to do so may result in electrical shock or fire.
 - Pull the plug out from the outlet and wipe clean with a dry cloth.
14. Do not unplug by pulling on cord. To unplug, grasp the plug, not the cord.
 - Pulling on the cord may cause damage and result in electrical shock or fire.



WARNING

To reduce the risk of burns, electrocution, fire or injury to persons:

1. Close supervision is necessary when this product is used by, on, or near children or invalids.
2. Use this product only for its intended use as described in this manual. Do not use attachments not recommended by the manufacturer.
3. Never operate this product if it has a damaged cord or plug, if it is not working properly, if it has been dropped or damaged, or dropped in water. Return the product to a service center for examination and repair.
4. Keep cord away from heated surfaces.
5. Never block the air openings of the product or place it on a soft surface, such as a bed or couch, where the air openings may be blocked. Keep the air openings free of lint, hair, and the like.
6. Never use while sleepy or drowsy.
7. Never drop or insert any object into any opening or hose.
8. Do not use outdoors or operate where aerosol (spray) products are being used or where oxygen is being administered.
9. Connect this product to a properly grounded outlet only. See Grounding Instructions.
10. Do not use this product while smoking.
11. Do not stand on or place heavy objects on top of the toilet.
 - To avoid injury or damage to the toilet unit, do not stand on or place heavy objects on top of the toilet.
12. Do not bend or crush the connection hose.
 - Bending or crushing the connection hose may result in water leakage.
13. Use only a mild dish detergent diluted with water to clean your NEOREST. Do not use the following to clean the NEOREST:
 - Toilet bowl cleaner, household cleaner, benzene, paint thinner, powdered cleanser, or nylon scrubbing pads.
 - Use of any cleaning product other than diluted dish detergent may crack the plastic and cause injury to the user or may damage the hose resulting in water leakage.
14. To prevent sudden water leakage, do not remove the water supply filter before. Refer to Page 34 for instructions on cleaning the water supply filter.
15. When installing the water supply filter, make sure that it is securely placed in its proper position.
 - Improper positioning of the water supply filter may result in water leakage.
16. If water leakage should occur, always turn the water shutoff valve and then turn off the water.





WARNING To reduce the risk of burns, electrocution, fire or injury to persons:

17. Always use the NEOREST at a room temperature of 32°F (freezing temperature) or above to prevent frozen pipes and hoses.
 - Frozen water pipes will cause the toilet and the pipes to break resulting in water leakage. Refer to Page 38 for instructions on how to prevent frozen pipes.



GROUNDING INSTRUCTIONS

This product should be grounded. In the event of an electrical short circuit, grounding reduces the risk of electric shock by providing an escape wire for the electrical current. This product is equipped with a cord having a grounding wire with a grounding plug. The plug must be plugged into an outlet that is properly installed and grounded.



DANGER Improper use of the grounding plug can result in a risk of electric shock.

If repair or replacement of the cord or plug is necessary, do not connect the grounding wire to either flat blade terminal. The wire insulation having an outer surface that is green with or without yellow stripes is the grounding wire.

Check with a qualified electrician or serviceman if the grounding wire instructions are not completely understood, or if in doubt as to whether the product is properly grounded.

This product is factory equipped with a specific electric cord and plug to permit connection to a proper electric circuit. Make sure that the product is connected to an outlet having the same configuration as the plug. No adapter should be used with this product. Do not modify the plug provided - if it will not fit in the outlet, have the proper outlet installed by a qualified electrician. If the product must be reconnected for use on a different type of electric circuit, the reconnection should be made by qualified service personnel.

If it is necessary to use an extension cord, use only a three wire extension cord that has a three blade grounding plug, and a three-slot receptacle that will accept the plug on the product. Replace or repair a damaged cord.

Save these instructions.



Operational Instructions

Always follow these precautions to ensure the safe use of your product.

Do not wipe the toilet unit or seat with a dry cloth or toilet paper.

- Use of a dry cloth or toilet paper to wipe the toilet bowl, seat or lid will scratch the surface.

Refer to Page 29 for instructions on how to care for your Washlet.

Do not expose the NEOREST to direct sunlight.

- Use of the product under direct sunlight may result in discoloration of the plastic, inconsistent temperature control of the toilet seat or malfunction of the remote controller.

Avoid getting urine on the main unit or wand as this may result in malfunction of the product.

Do not cover the seat sensor, motion detection sensor or remote control transmitter.

- Covering the sensors or remote control transmitter will prevent them from working properly.

Do not lean back against the lid.

- Leaning against the lid may damage or break it.

To avoid electrical damage to your unit, be sure to unplug the power cord during lightening storms.

Do not use the NEOREST near radios and stereo equipment.

- Use of the NEOREST near a radio, etc. will cause electrical interference.

When not in use over extended periods of time, remove the power plug from the wall outlet.

- However, when being used at a room temperature of less than 32° F (below freezing), be sure to keep the unit plugged in to prevent freezing of the pipes and hoses.

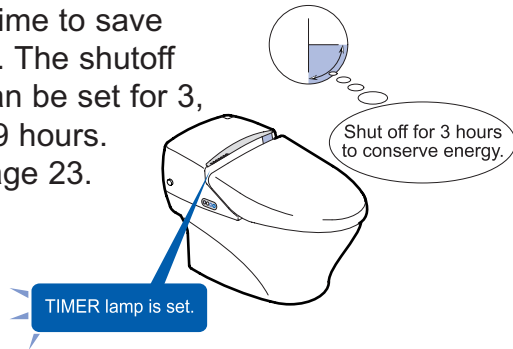
When restarting after extended disuse, let water run for a few minutes before using.

Tips for Using the NEOREST 600

Protect the environment and reduce the use of water and electricity.

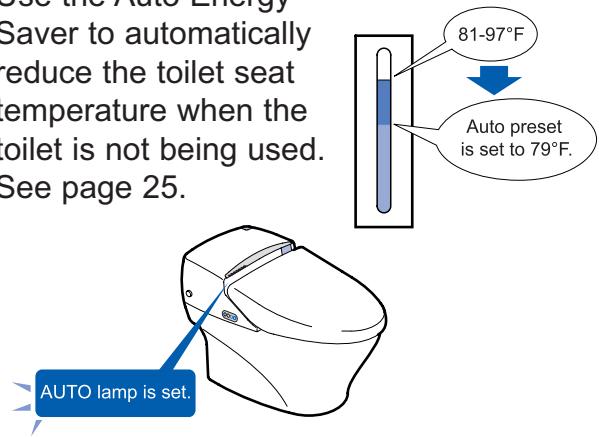
Use the timer and save energy.

Set the timer so that it shuts off the toilet seat heater each day at the same time to save energy. The shutoff time can be set for 3, 6 and 9 hours. See page 23.



Use the Auto Energy Saver.

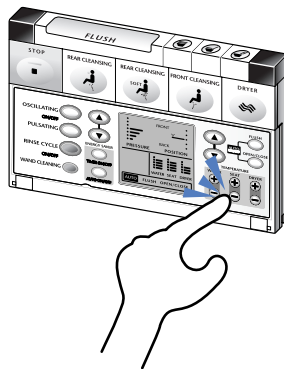
Use the Auto Energy Saver to automatically reduce the toilet seat temperature when the toilet is not being used. See page 25.



The "TIMER ON/OFF" and "AUTO ON/OFF" can be used together to save even more energy!

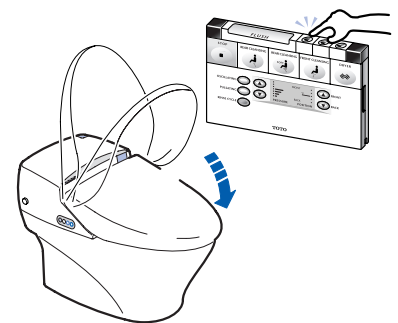
Reduce the temperature setting to save energy.

The toilet seat temperature can be reduced to a comfortable setting to save energy. See page 15.



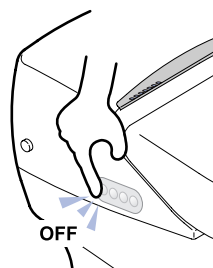
Keep the lid closed to keep the toilet seat warm and conserve energy.

Keeping the lid closed will help maintain the warmth of the toilet seat.



Turn the power switch to OFF when the Washlet is not being used over extended periods of time.

Turn the power switch off when leaving the house to conserve energy. See page 12.



Performance Features

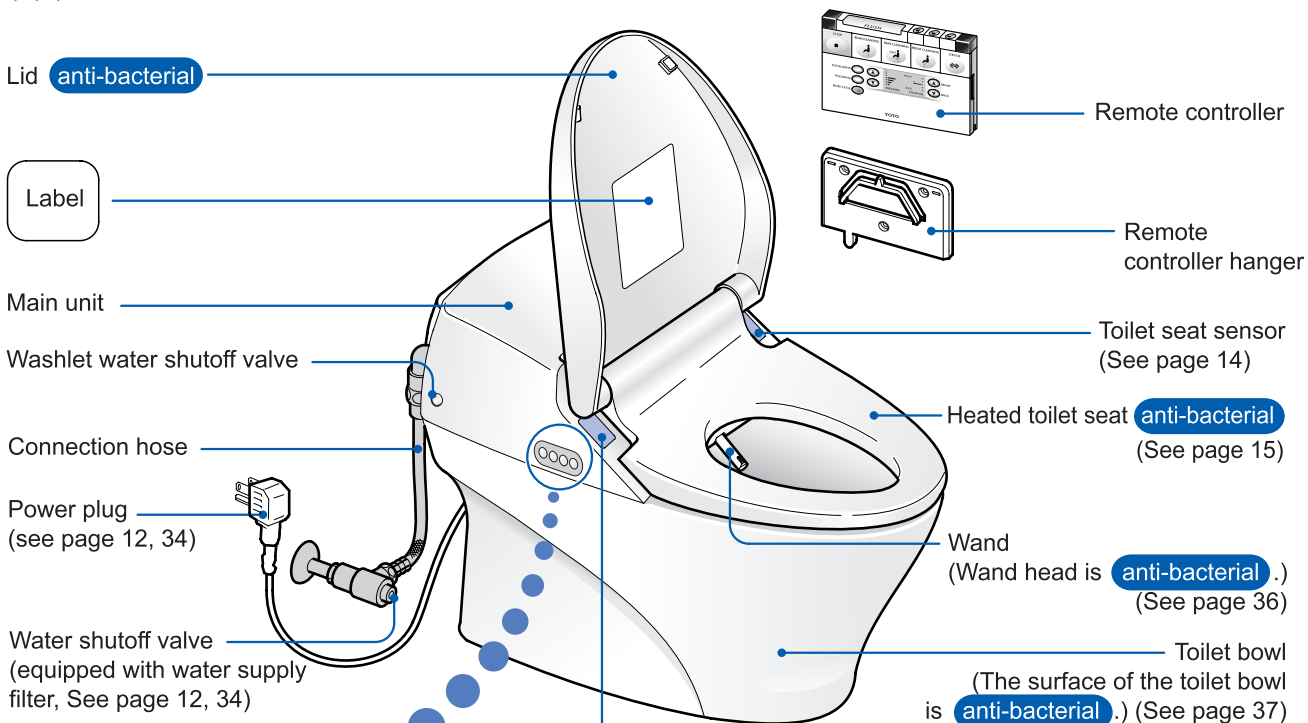
Washing Functions		Page
Rear cleansing	<ul style="list-style-type: none"> ● The Pulsating wash alternates cycles strong and soft sprays of water approximately 70 times per second for a very thorough rear wash. ● The soft wash and Front features provide a soft, yet thorough, whirling flow of water. 	13
Soft rear cleansing		
Front cleansing		
Wash position adjustment	<ul style="list-style-type: none"> ● The wand can be adjusted forward or backward. 	13
Water pressure adjustment	<ul style="list-style-type: none"> ● The water pressure can be adjusted to soft or strong. 	13
Oscillating wash	<ul style="list-style-type: none"> ● The Wand moves back and forth for a wide-range, thorough wash. 	13
Pulsating wash	<ul style="list-style-type: none"> ● A combination of soft/strong water pressure is used to wash. 	13

Amenities		Page
Heated toilet seat	<ul style="list-style-type: none"> ● Warms the toilet seat. 	15
Warm air drying	<ul style="list-style-type: none"> ● Dries wet portions with warm air. 	14
Temperature adjustment	<ul style="list-style-type: none"> ● Adjusts the temperature of the water, toilet seat and warm air dryer. 	15
Deodorizer	<ul style="list-style-type: none"> ● Removes toilet bowl odor. 	16
Remote controller	<ul style="list-style-type: none"> ● Allows for easy operation while on the toilet seat. 	10
Seat sensor	<ul style="list-style-type: none"> ● The sensor detects when someone sits on the toilet seat and activates all of the functions. 	14
Remote controlled toilet seat and lid	<ul style="list-style-type: none"> ● Raises and lowers the toilet seat and lid. 	17
Auto open/close	<ul style="list-style-type: none"> ● The sensor works as a motion detector and automatically opens/closes the lid. 	17-19
Remote controlled flush	<ul style="list-style-type: none"> ● Flushes the toilet via remote control. 	20
Automatic flush	<ul style="list-style-type: none"> ● Automatically flushes the toilet when you get off the toilet seat. 	21, 22

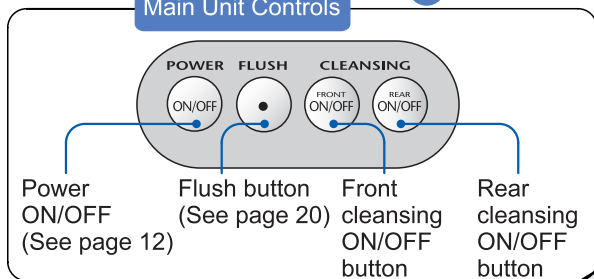
Energy Saving Features		Page
Timer ON/OFF	<ul style="list-style-type: none"> ● Conserve energy by pre-setting the timer to turn off the toilet seat heater for the same time period each day.(Can be set for 3, 6 or 9 hour periods of time). 	23, 24
Auto ON/OFF	<ul style="list-style-type: none"> ● The unit memorizes the time of day at which the toilet is least used and automatically reduces the toilet seat temperature to conserve energy. 	25-27
ON/OFF Button	<ul style="list-style-type: none"> ● Turn the button to the OFF position to stop warming the toilet seat and conserve energy. 	12

Sanitary Features		Page
Removable toilet seat and lid	<ul style="list-style-type: none"> ● The toilet seat and lid can be removed for easy cleaning. 	31, 32
Self Cleaning	<ul style="list-style-type: none"> ● The wand tip is washed before and after each use. 	—
Wand Cleaning	<ul style="list-style-type: none"> ● The entire wand is thoroughly washed when it is extended for use and before it is stored. 	—
Wand cleaning button	<ul style="list-style-type: none"> ● Used to switch off the water from the wand when cleaning it. 	36
Rinse Cycle	<ul style="list-style-type: none"> ● Discharges water inside the toilet bowl during cleaning. ● Automatic dual mode bowl cleaning. 	37
Easy-to-clean toilet bowl	<ul style="list-style-type: none"> ● “SanaGloss” finish protects the toilet bowl from staining and makes it easier to clean. 	—
Protective seal	<ul style="list-style-type: none"> ● The gap between the main unit and the toilet bowl is filled with a seal to prevent water entering the unit. 	32

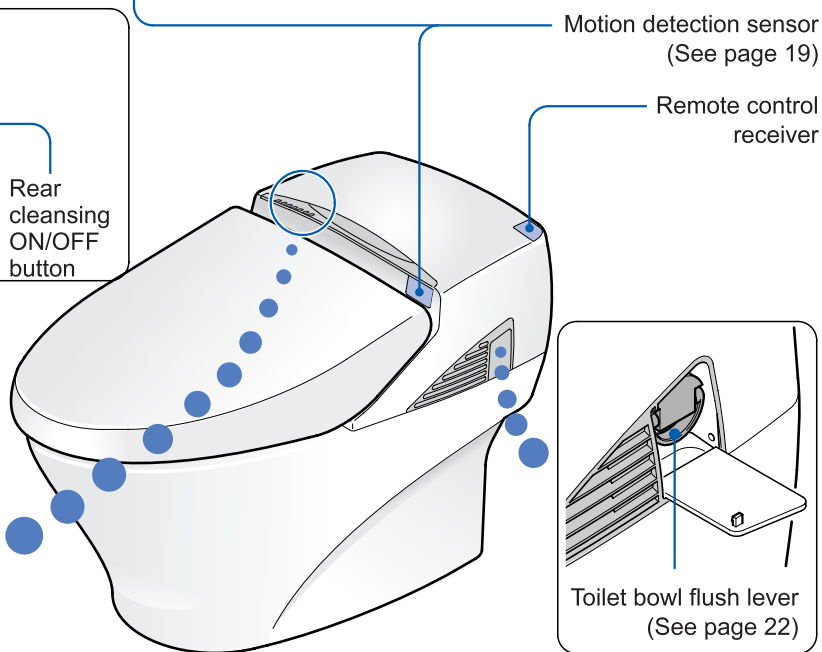
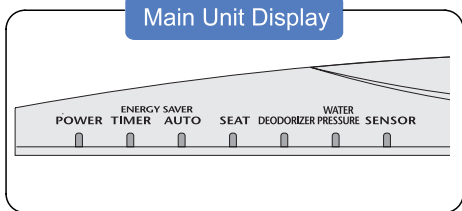
Parts and Features



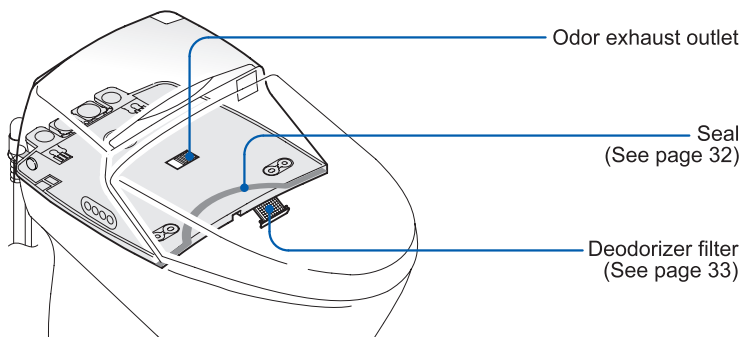
Main Unit Controls



Main Unit Display



Bottom of Main Unit



Remote Controller

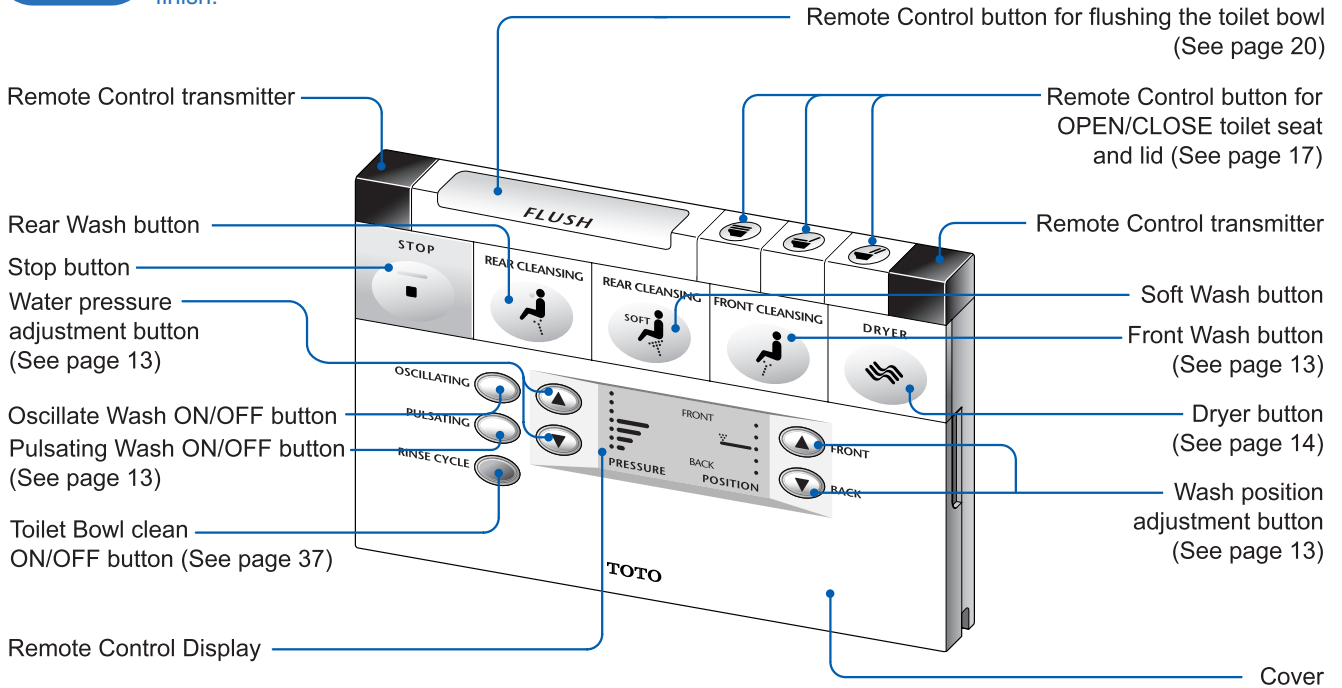
- The main control buttons have imprints for vision-impaired users.

Pi a digital “ping” will sound off while the main unit is receiving signals from the remote controller.

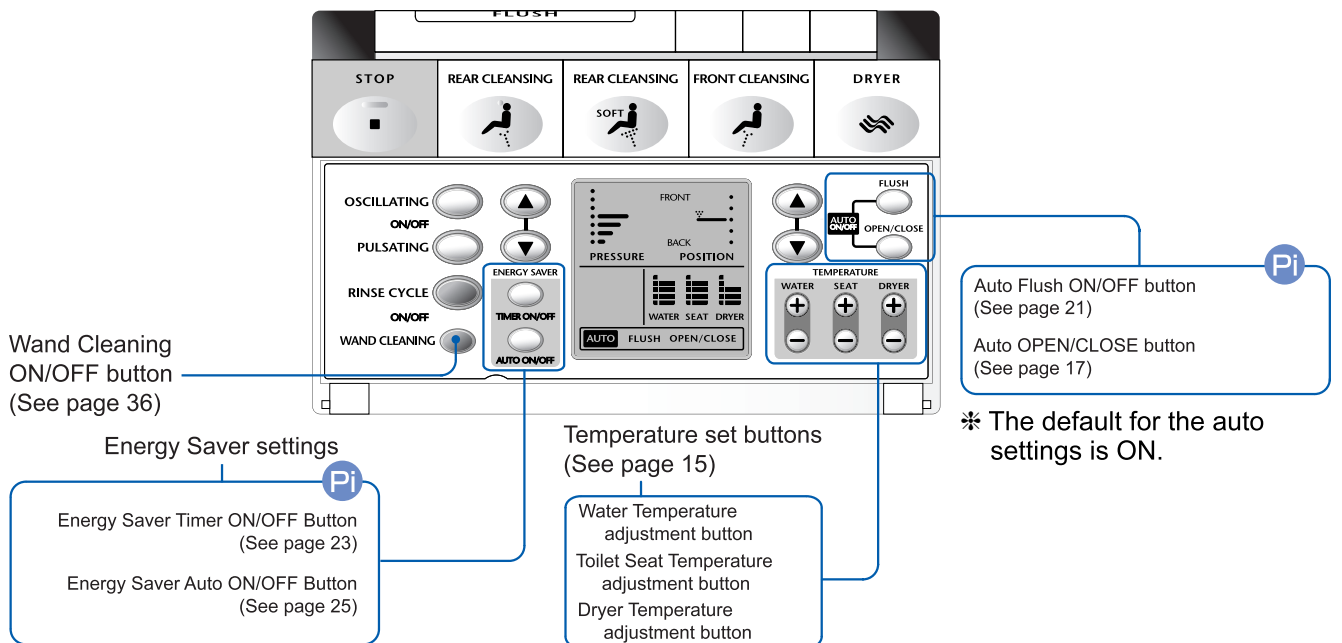
Cover Closed

Anti-bacterial

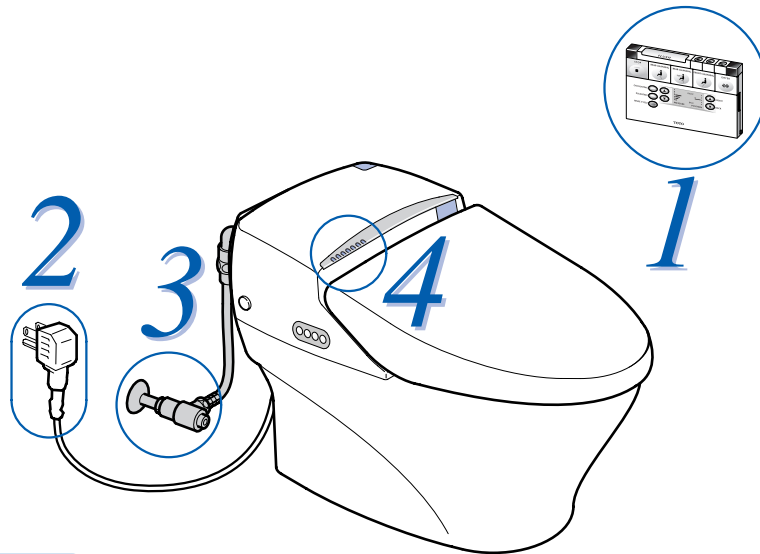
The control buttons have been treated with an anti-bacterial finish.



Cover Open



Before Using the NEOREST 600

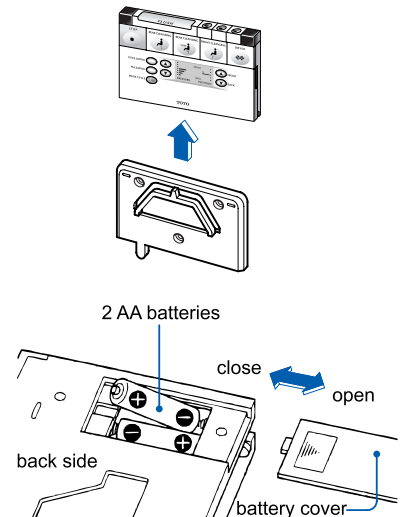


Preparation

1 Insert batteries into the remote controller.

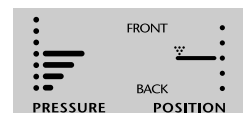
- ① Remove the remote controller from its wall hanger.
 - Grasp the remote controller at each side and pull straight up.
- ② Open the battery cover on the back of the remote controller.
- ③ Insert 2 AA batteries into the battery compartment.
- ④ Close the battery cover.

Tip  1



- If the batteries are properly inserted, the remote control display will appear as in the figure shown at the right.

Remote Control Display



Regarding dry cell batteries

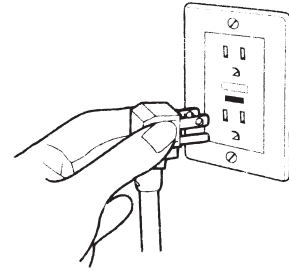
- Use alkaline dry cell batteries.
 - Adhere to the following precautions to prevent battery acid leakage.
 - Use the same type of batteries each time you replace batteries.
 - Remove the batteries from the battery compartment when not using the remote controller for extended periods of time.
 - Do not use rechargeable batteries.
- Settings (temperature, energy saving and time) may be lost when replacing batteries. Be sure to reset the desired settings after installing new batteries.

Tip 1

Turn the Main Unit controls to OFF when replacing the batteries or cleaning the unit to avoid pushing other buttons and enabling unnecessary functions, such as flushing or opening and closing the lid.

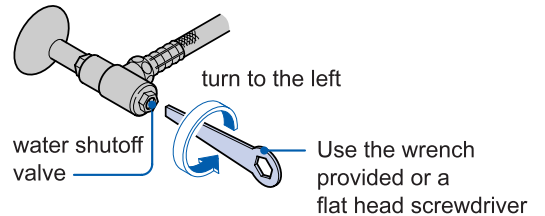
2 Insert the plug into the wall outlet.

- Connect the power cord to a 120V (60 Hz) GFCI protected power outlet.



3 Open the water shutoff valve.

- Use the wrench provided or a flat head screwdriver to open the water shutoff valve.

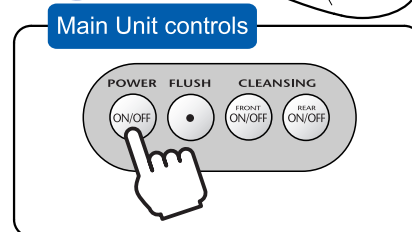
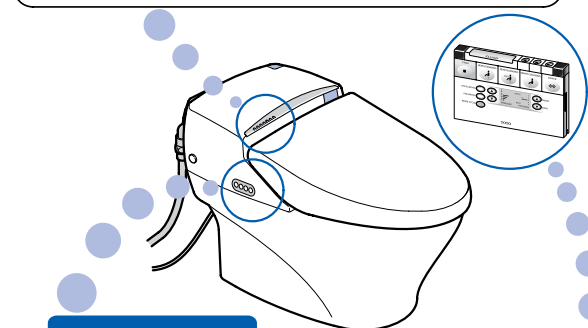
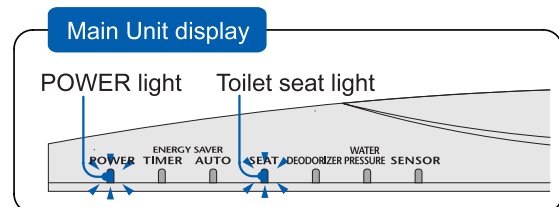


4 Check the [Main Unit Display].

- Is the "POWER" light on the Main Unit display ON?



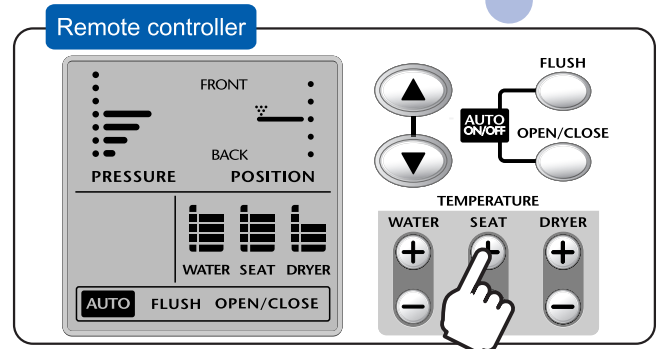
If the light is not ON, push the "POWER" button on the main unit to turn the light on.



- Is the toilet seat light on the Main Unit display ON?



If the light is not ON, open the remote controller cover and push the toilet seat temperature adjustment button **SEAT ON** to turn the light on.



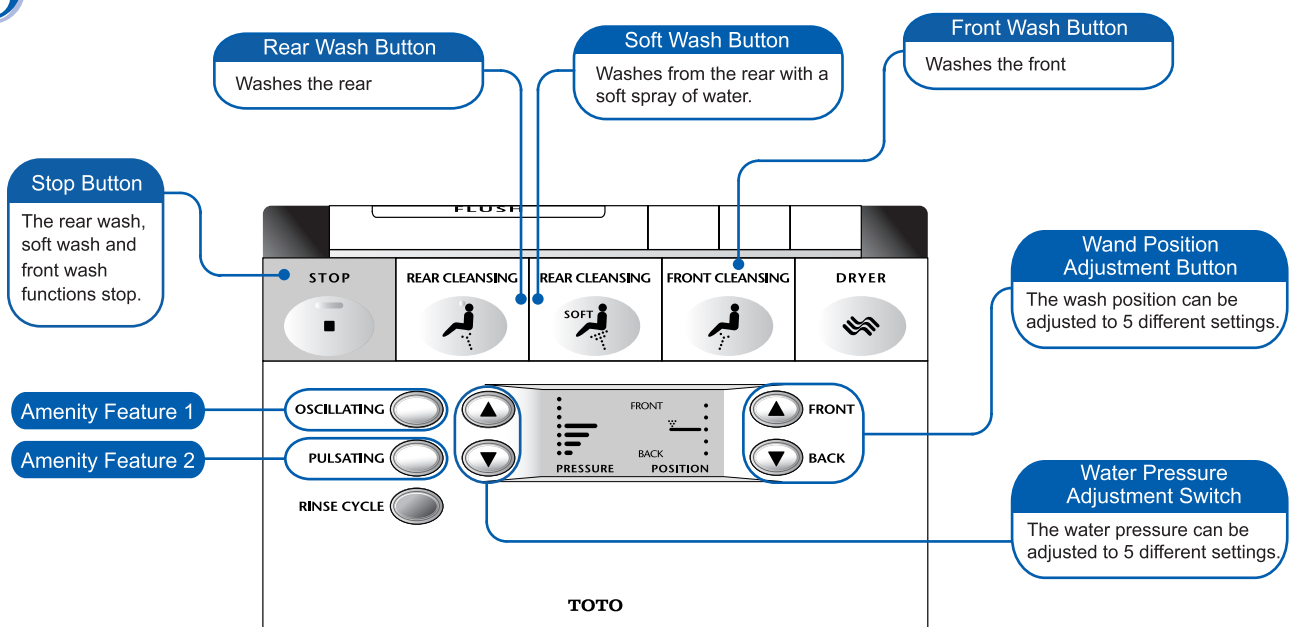
How to Use the NEOREST 600

1 When you stand at a distance of approximately 1 foot from the front of the toilet, the lid will automatically open.
(Auto OPEN/CLOSE, see page 17, 18)

2 Sit on Seat

- Functions become available when toilet seat sensor is activated
- In preparation for wash, water is released from wand
- Deodorizer starts automatically

3 Wash



For Better Results:

Amenity Feature 1: Oscillating

The wand moves back and forth for a wide-range, thorough wash.



Push the desired button.



Push the "Oscillating" button to activate the "Oscillating" function.



Push the "Oscillating" button again to turn off the "Oscillating" function.

Amenity Feature 2: Pulsating

Alternates hard and soft water pressure.



Push the desired button.

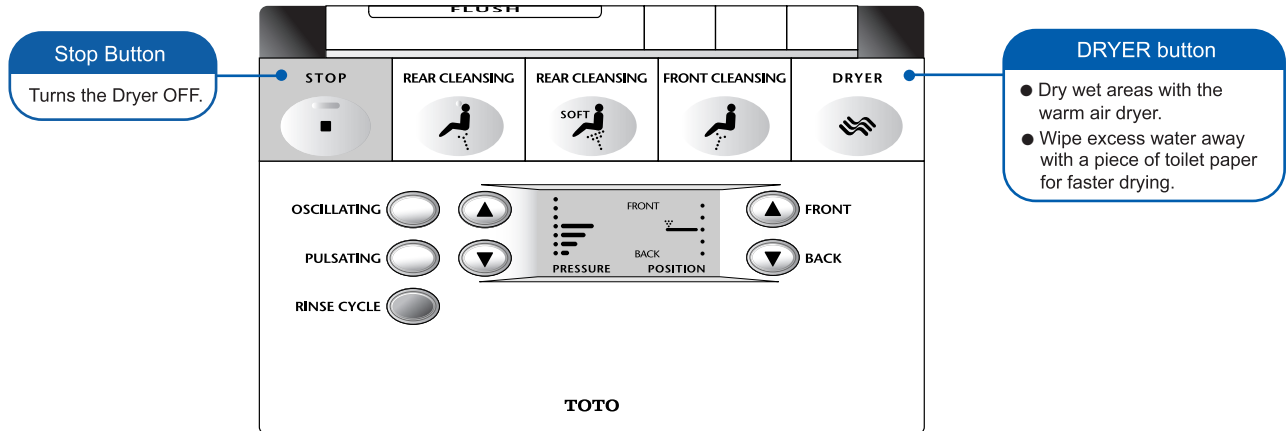


Push the "Pulsating" button to activate the "Pulsating" function.



Push the "Pulsating" button again to turn off the "Pulsating" function.

4 Dryer



5 Move away from the toilet

The deodorizer is automatically shut off after 1 minute.

6 Flush by using the flush button on the remote control.

(Auto flush, see page 21).



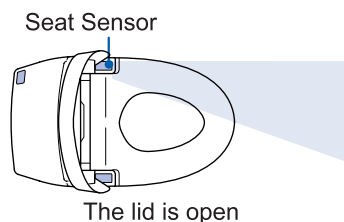
7 Close the seat and lid by using the button on the remote control.

(Auto open/close, see page 17, 18).



About the Seat Sensor:

- The seat sensor detects when a person sits on the seat.
- The seat sensor projects infrared light as shown in the figure below. When a person sits in front of the beam, the sensor detects their presence.
- The beam may not detect a presence depending on clothing or sitting position. If this is the case, please readjust sitting position or raise clothing.

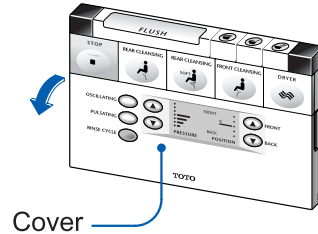


For Best Results

Adjusting the Temperature

- Use the remote controller to adjust the water temperature, toilet seat temperature, or dryer heat to the desired setting.

1 Open the Remote Controller Cover.



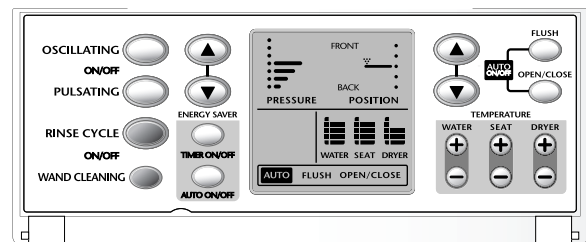
2 Adjust the temperature

- Adjust the temperature setting for the water and toilet seat by pushing the **+** and **-** buttons.

To turn off the temperature display, push down on the **-** button until the display goes out.

Tip 1

- The dryer temperature can be adjusted to 5 different settings by pushing the **+** and **-** buttons.

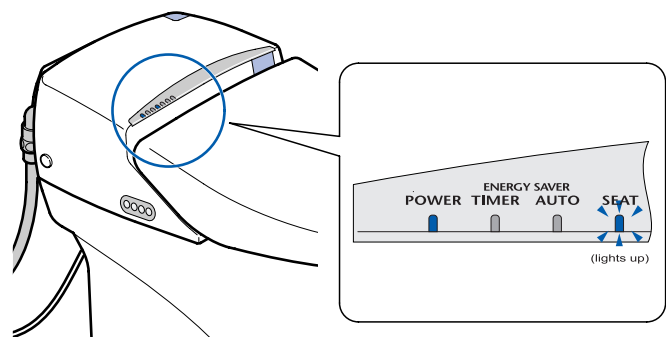


Toilet seat temperature can be adjusted.
 (81°~97°F) (From 27° ~ 36°C)

Water temperature can be adjusted.
 (86°~104°F) (From 30° ~ 40°C.)

Dryer heat temperature can be adjusted.
 (5 settings)

- When the toilet seat temperature button is pushed, the "Seat" light on the main unit controls will light up.



Tip 1

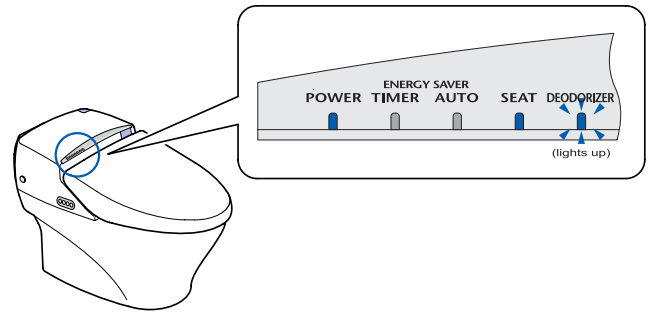
- The temperature setting indicated on the display is to be used as a guide and does not reflect the actual temperature.
- Temperature settings (water, toilet seat, and dryer) may be lost when replacing batteries. Be sure to reset the desired settings after installing new batteries.

Deodorizing

1 Sit on the toilet seat

The deodorizer function automatically starts

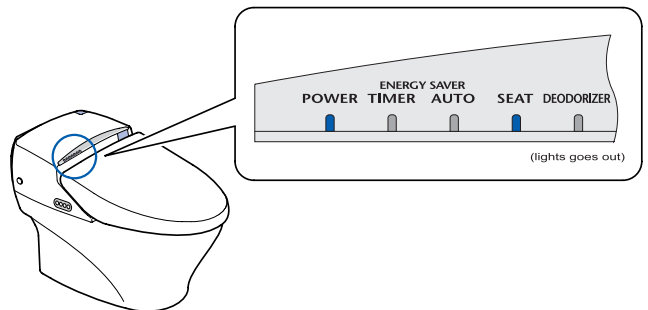
- The "DEODORIZER" light on the main unit display lights up.



2 Move away from the toilet seat

The deodorizer function automatically stops after 1 minute.

- The "DEODORIZER" light on the main unit display goes out.



Opening and Closing the Toilet Seat and Lid



There are 2 settings for opening and closing the toilet seat and lid. The remote controlled setting and the auto setting.

Remote Controlled Opening/Closing of Toilet Seat and Lid

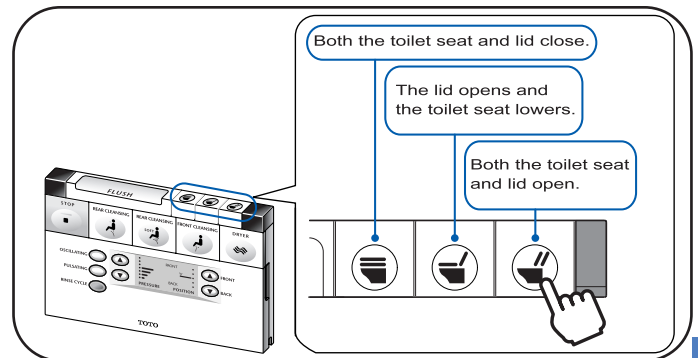
- The toilet seat and lid can be opened and closed by pushing the desired button on the remote controller.

Tip 1

Push the desired button on the remote controller.



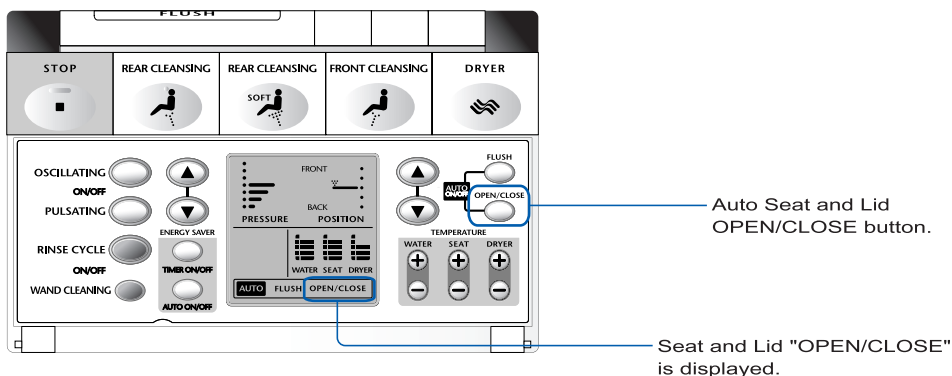
The toilet seat and lid will open and close



Automatic Opening/Closing of Toilet Seat and Lid

- When you stand in front of the toilet, the lid automatically opens, and when you move away from the toilet, the lid automatically closes. If the lid is closed either manually or via remote control, it will not automatically reopen for 10 seconds. (The lid is programmed so that it will not repeatedly open and close.)

► **check** Confirm that the Seat and Lid "OPEN/CLOSE" function is displayed from the remote controller display.



Tip 1

In the event of a power outage or when the remote controller batteries need replacing, manually open and close the toilet seat and lid.

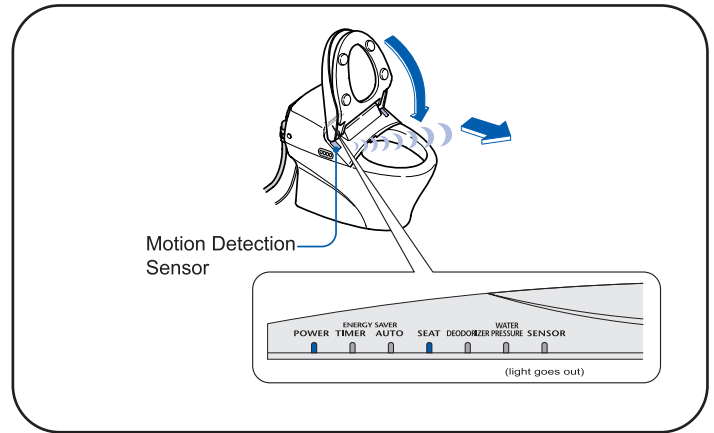
When Standing in Front of the Toilet

- Raise the toilet seat with the Remote Controller. You must stand in front of the toilet for at least 6 seconds or the lid will not automatically close.

After using the toilet, move at least 1 foot away from the toilet.

The toilet seat and lid will automatically close after 90 seconds.

- When the motion detection sensor fails to detect motion, the "sensor" light on the Main Unit Display will go out.
- If you do not sit or stand for more than 6 seconds, the seat and lid will close after 5 minutes.

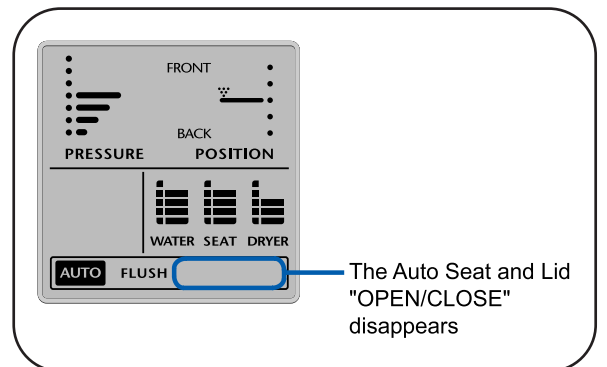


To turn off the Auto OPEN/CLOSE function

Push the desired button on the remote controller

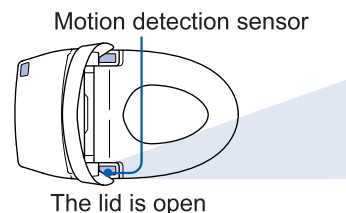
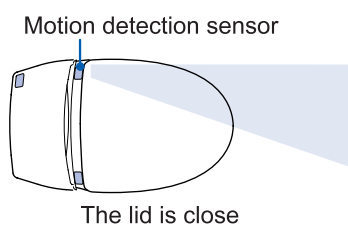
Push the Auto OPEN/CLOSE button on the remote controller to stop the Auto OPEN/CLOSE.

- The Auto "OPEN/CLOSE" will disappear from the remote control display.
- To turn the Auto Seat and Lid "OPEN/CLOSE" on again, repeat this operation.



About the Motion detection sensor:

- The Motion detection sensor detects when someone stands in front of the toilet.
- The Motion detection sensor projects an infrared light as shown in the figure below. When someone stands in line with the infrared light, movement is detected by the sensor.



Flushing Water

There are 2 settings for flushing water. The remote controlled setting and the auto setting.

Remote Controlled Flushing

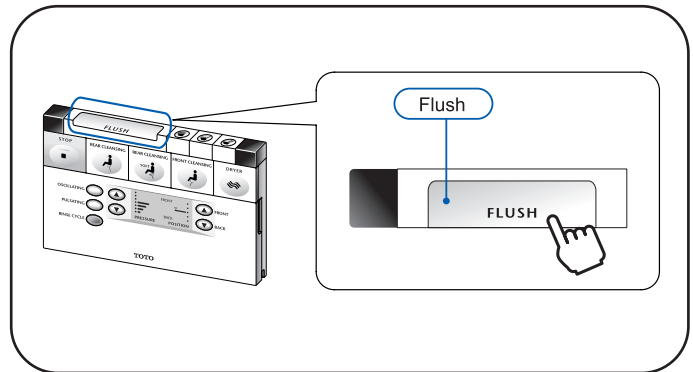
- The toilet can be flushed by pushing the flush button on the remote controller.

Tip 1

Push the flush button on the remote controller.



The toilet bowl is flushed.
1.6 Gallons per Flush (6 LPF)

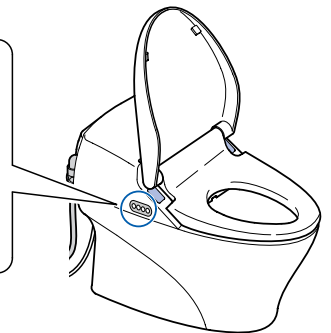
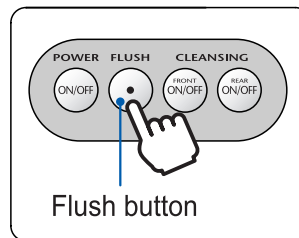


If the remote controller batteries need replacing

- Use the flush button located on the main unit controls to flush the toilet.

Push the flush button on the main unit controls.

The toilet bowl is flushed.
1.6 Gallons per Flush (6 LPF)



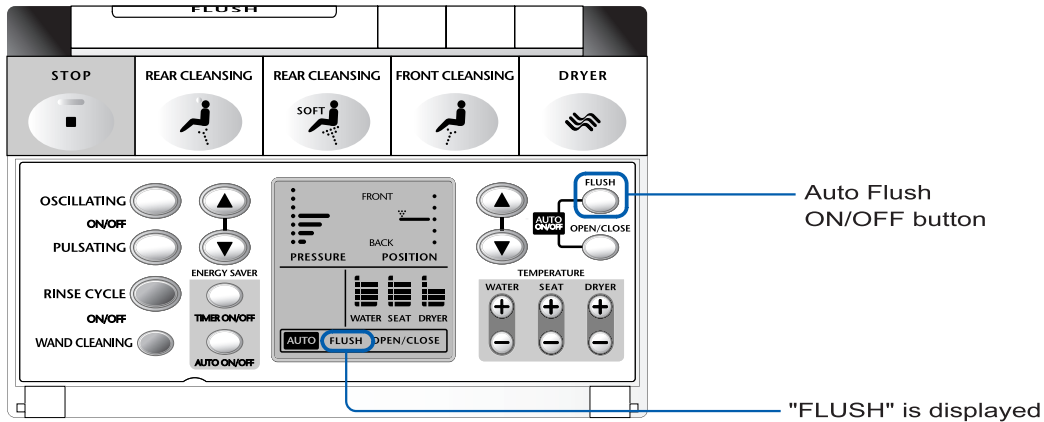
Tip 1

The toilet bowl flush button cannot be pushed repeatedly. Wait 10 seconds before pushing the button again.

Automatic Flushing

- The toilet will automatically flush when the user moves away from the toilet. (This function prevents the toilet bowl from being left unflushed.)

► **check** Confirm that the "Flush" function is displayed from the remote controller display.



When sitting on the toilet seat

- You must sit on the toilet seat for at least 6 seconds in order to activate the automatic flush function.

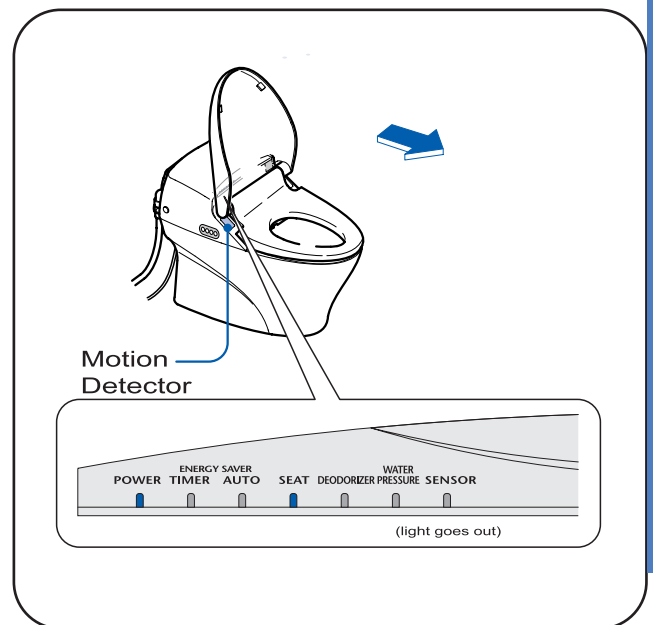
When finished, move away from the toilet (more than one foot).

After 3 seconds the toilet will automatically flush

Tip 2, 3

- When the motion detection sensor does not detect motion near the toilet, the sensor light located on the main unit control goes out.

1.6 Gallons per Flush (6 LPF)



Tip 2 The default setting for the Auto flush is ON.

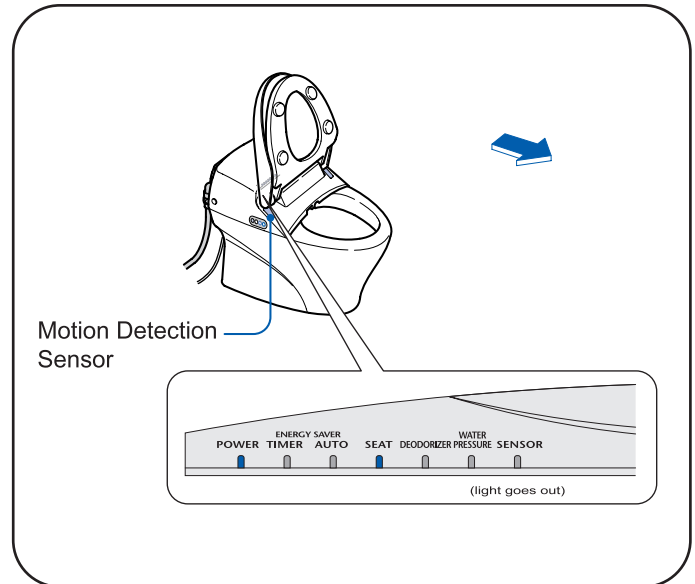
- Tip 3
- The auto flush will not function if the user sits on the toilet or stands in front of the toilet for less than 6 seconds. In this case, use the remote controller flush button to flush the toilet.
 - Depending upon the height and position of the user, the toilet may not automatically flush.

When standing in front of the toilet

- You must stand in front of the toilet for at least 6 seconds in order to activate the automatic flush function.

1.2 Gallon light flush (4.5 LPF)

When finished, move away from the toilet (more than one foot).



After 3 seconds the toilet will automatically flush

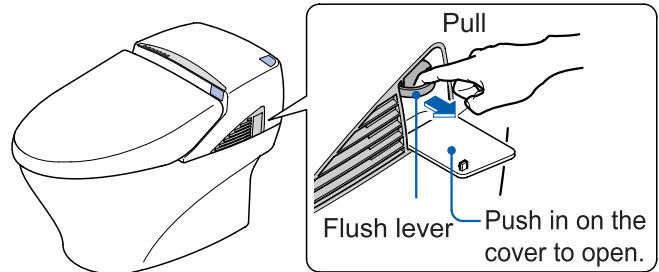
- When the sensor does not detect motion near the toilet, the motion detection sensor light located on the main unit control goes out.
- Light flush only activates when sensor detects someone standing in front of unit for 6 seconds and seat and lid are both raised.

Flushing the toilet during a power outage

- Pull out the flush lever located on the side of the toilet bowl.

Pull out the flush lever

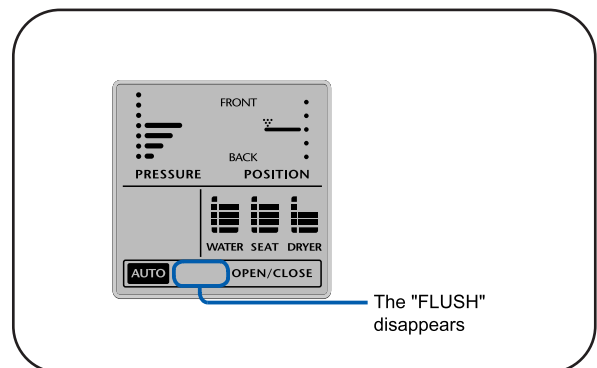
The toilet bowl is flushed.
1.6 Gallons per Flush (6 LPF)



To turn off the Auto Flush function

Push the Auto Flush button on the remote controller to deactivate the Auto Flush

- The "FLUSH" will disappear from the remote control display.
- To turn the Auto Flush on again, repeat this operation.



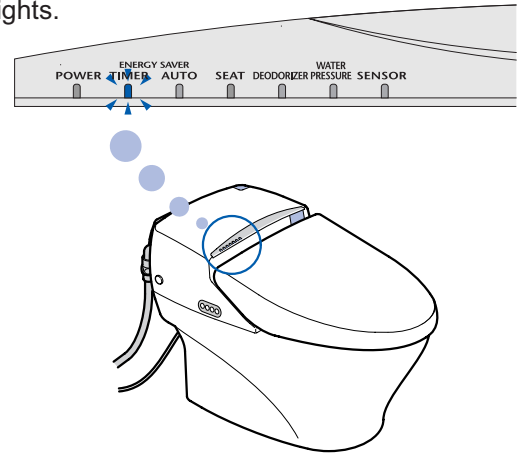
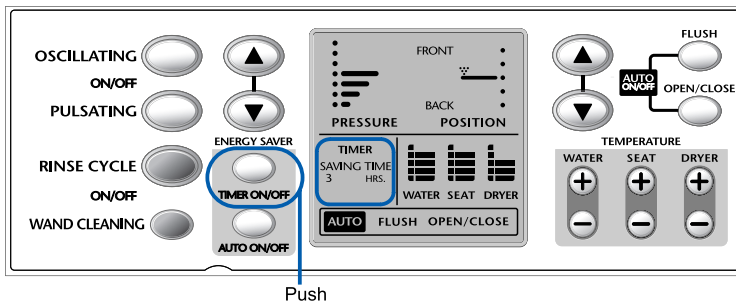
To Conserve Energy

Using the Energy Saver Feature - "TIMER ON/OFF"

You can set your Neorest to turn off the seat heater to save energy by pressing the "TIMER ON/OFF" button. The heater turns off for 3, 6 or 9 hours to save energy. Each day afterwards, the NEOREST automatically goes into Energy Saver mode at the same time.

1 Open the remote control cover and press the "Timer" button at the time you want the Energy Saver feature to begin operating.

- "Timer" and "Saving Time 3 hrs." appear in the remote control display, and a beep sounds.
- The "Energy Saver - Timer" lamp in the main unit display lights.
- The seat heater turns off and energy saving starts.

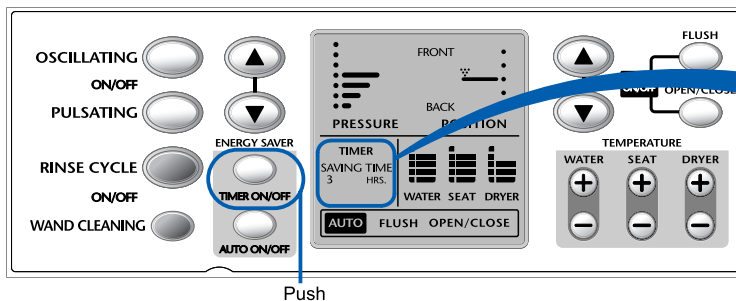


Notes

- The saving time is initially set for 3 hours.
- When batteries for the remote control are replaced, the settings will be cleared. Reset the settings.
- When you expect freezing temperatures, keep the room warm so that the room temperature does not fall below freezing, and turn off the Energy Saver feature.
- In case the power cord is disconnected or a power failure occurs, the timer may not operate as originally set starting on the following day.

2 Press the "TIMER ON/OFF" button repeatedly to set the duration.

- Every time you press "TIMER ON/OFF", the display changes.
- Select the duration you want to set.



Notes

- You can always change the energy saving duration without changing the energy saving start time.
- If you wish to change the energy saving start time, turn off the energy saving timer and press the "Timer ON/OFF" button again at the new time.

* Example

When you want to save energy for 6 hours between 0:00 a.m. and 6:00 a.m. (while your family is sleeping), press the “Timer” button at midnight.

- The energy saving starts automatically at the same time and duration on every following day.

Note

- When the toilet seat is occupied during energy saving mode, the seat heater temporarily turns on. At this time, the green “Power” lamp lights.

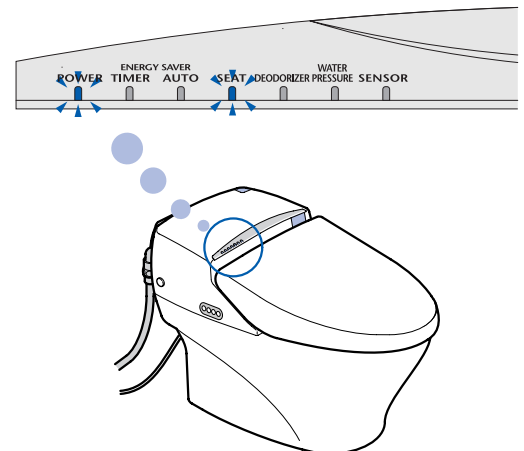
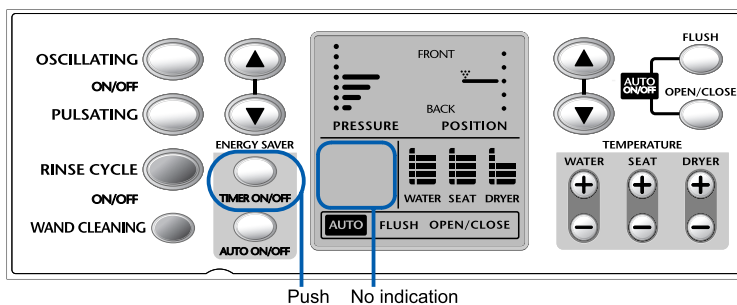
It takes about 15 minutes for the seat to warm up.

Shutting Off Energy Saver Feature - “Timer ON/OFF”

1

Open the remote control cover and press the “Timer ON/OFF” button until “Timer” and “Saving Time” indicators in the remote control display go out.

- The green “Power” lamp and the green “Seat” lamp on the main unit display light.
- The seat heater turns on and energy saving stops.

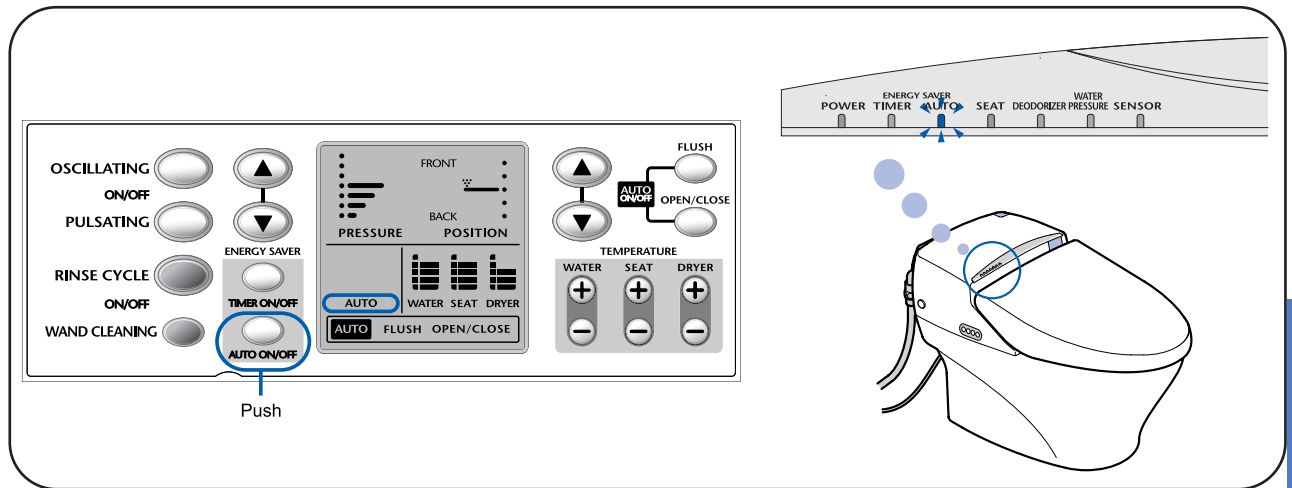


Using the Energy Saver - "AUTO ON/OFF"

The Neorest can be set to remember the times of day that you normally use the toilet, and will automatically lower the temperature of the toilet seat to save energy when you do not expect to use the toilet.

1 Open the remote control cover and press the "AUTO ON/OFF" button.

- "AUTO" appears in the remote control display.
- The "Energy Saver - Auto" lamp in the main unit display lights.
- The main unit accepts the operation, and a beep sounds.

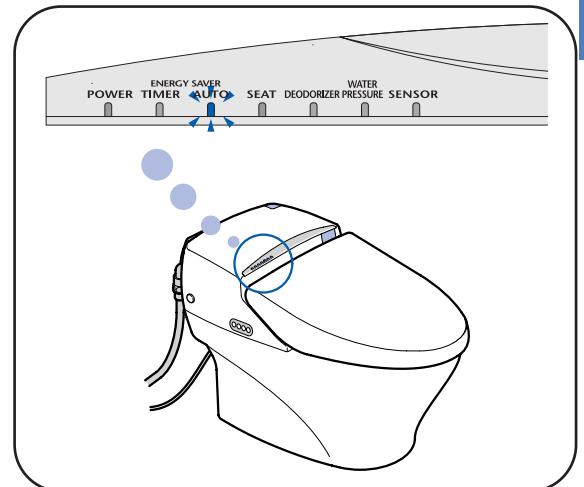


The Neorest begins to detect the time periods during which the toilet is not used often. (See Note).

Note

- The seat temperature is set to about 79°F (26°C) while in Auto energy-saving mode; the seat will begin to warm up when someone sits on it.
- During time periods when the toilet is not used much, the orange "Energy Saver - Auto" lamp on the main unit lights.

The temperature of the seat is automatically lowered, and the energy-saving mode begins operating.



Notes

Precaution concerning the Energy Saver:

- It takes the Neorest two or three days to establish during which time periods the toilet is not used often. During that time, the energy-saving mode will go into effect gradually.

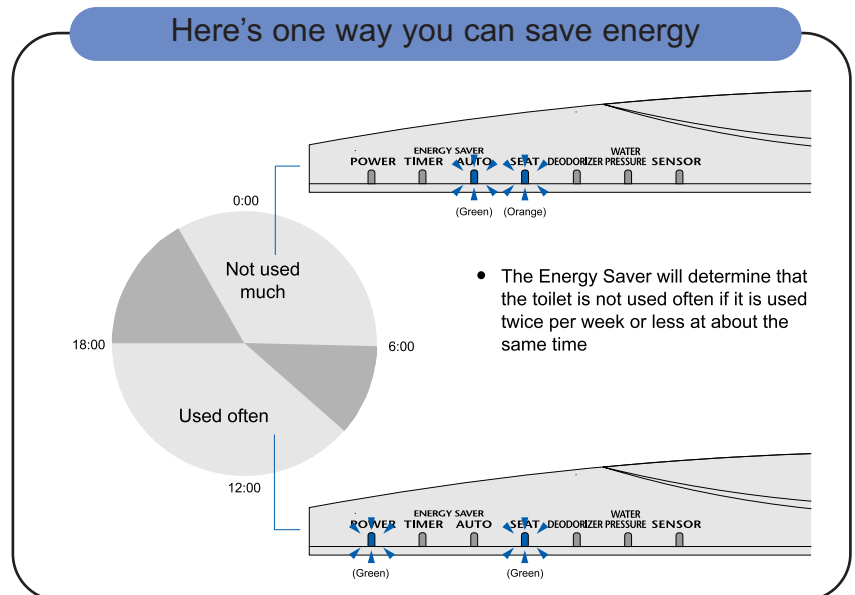
When replacing the batteries of the remote control:

- The energy-saving settings will disappear and must be re-entered.

When the power is switched off, or if there is a power outage:

- The Energy Saver sometimes does not operate correctly when this happens, but it will begin operating correctly again on the following day.
- If the three-prong plug is unplugged when the Neorest is not used for a long time, it will operate in the same way.

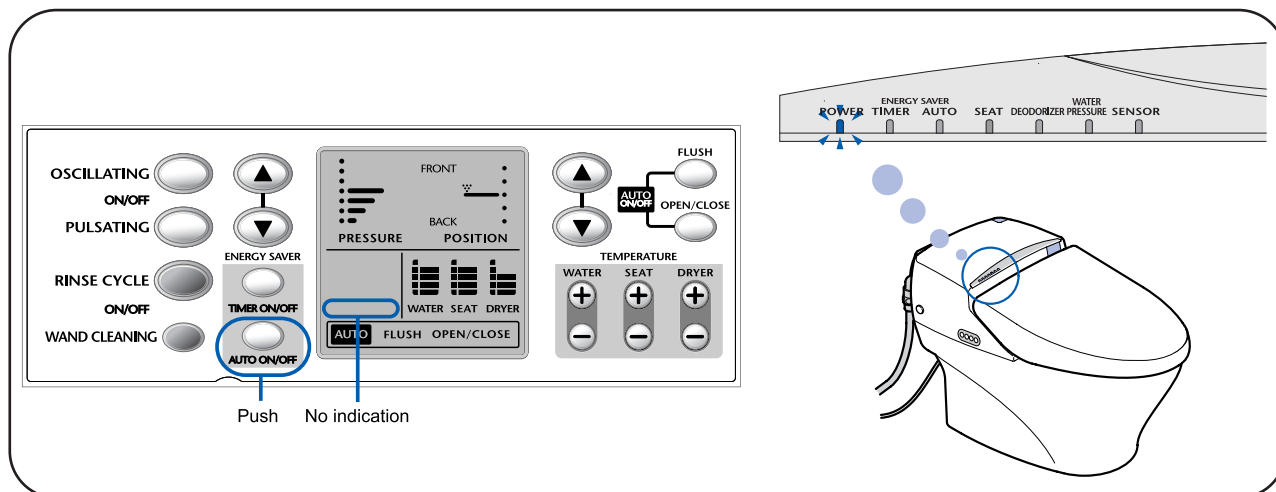
Here's one way you can save energy



Shutting Off the Energy Saver Feature - “AUTO ON/OFF”

1 Open the cover of the remote control, and press the Energy Saver button.

- “AUTO” disappears from the remote control display.
- The main unit accepts the operation, and a beep sounds.
- The green “Power” lamp on the main unit lights.



The Energy Saver shuts off

The NEOREST can be used even during Energy Saving mode.

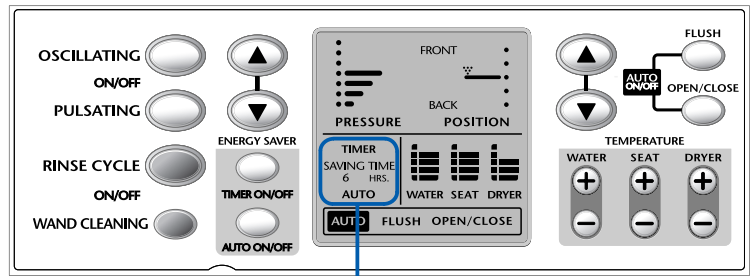
- If you sit on the seat when it is in Energy Saving mode, the seat will warm up. When this occurs, the green “Power” lamp will come on.
- The seat will take about 5 minutes to get warm.

If You Are Using the “TIMER ON/OFF” and the “AUTO ON/OFF” Features at the Same Time

1 Open the cover of the remote control, and press the “TIMER ON/OFF” button when you want to begin saving energy.

Note: For more details, see “TIMER ON/OFF” on page 23.

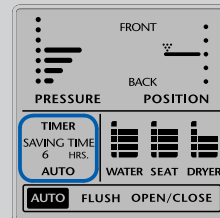
2 Next, press the ‘AUTO ON/OFF” button. (See note.)



Display

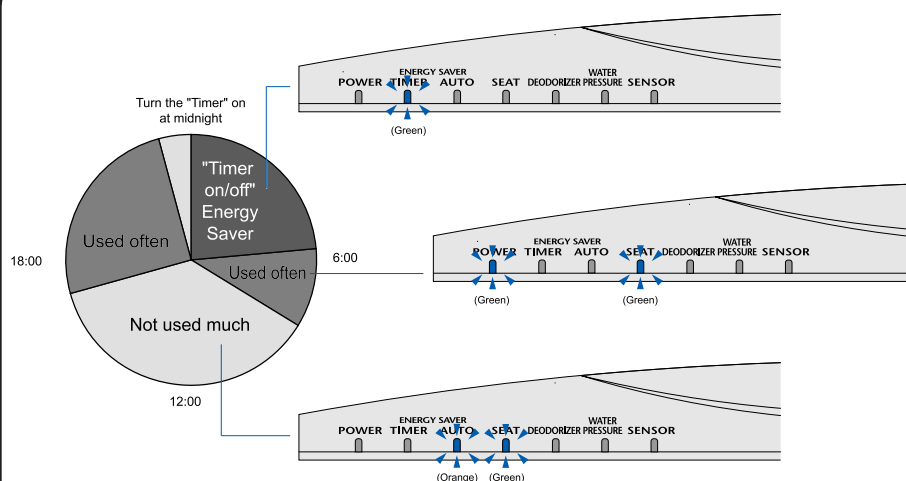
Notes

- When you are using both, the remote control display will look as follows:



- One of a Saving Time of 3, 6, or 9 hours will display.

Here's one way you can save energy



- It does not matter in which order you push the “TIMER ON/OFF” and “AUTO ON/OFF” buttons: “TIMER ON/OFF” first, the “AUTO ON/OFF” or vice-versa.
- During the time that the “TIMER ON/OFF” is not operating, the “AUTO ON/OFF” operates and helps you save energy when the Neorest is not used often.

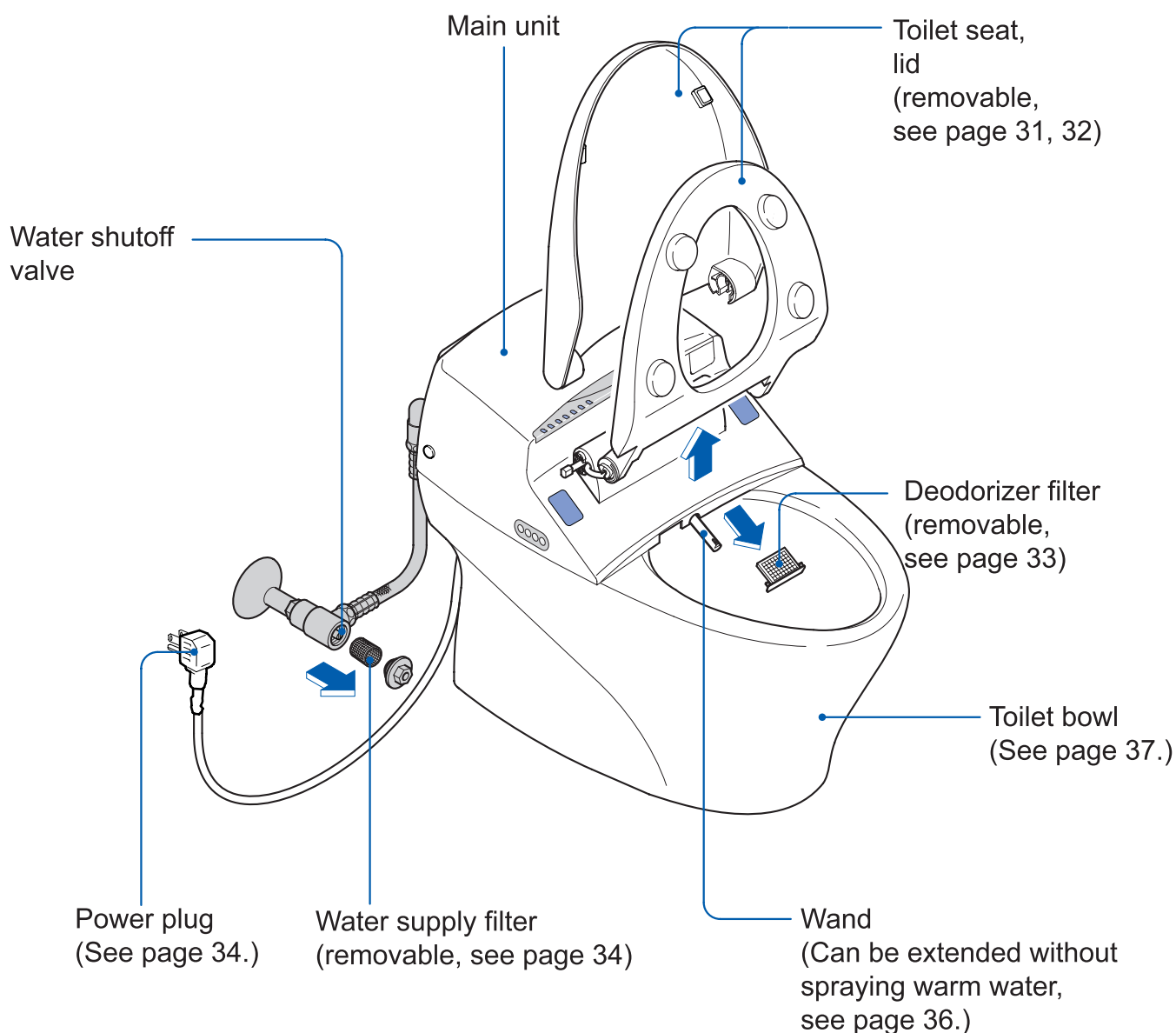
Caring for your NEOREST 600

Before Cleaning the Neorest

Each component can be disassembled for a thorough cleaning.

Caution!

Be sure to turn off the Auto Lid OPEN/CLOSE and Auto Flush buttons before cleaning the unit.



Daily Care and Maintenance

Cleaning the main unit, toilet seat and lid.

Wipe the components with a soft damp cloth.

- Wet and wring out a soft cloth for wiping the surface of the components.

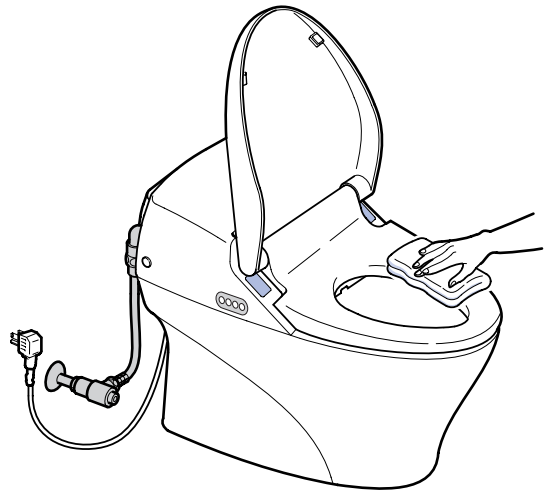
Tip  1, 2

Cleaning very dirty components.

- Wet a soft cloth with diluted dish detergent and wipe down the component surfaces.
- Then wipe off the detergent solution with a damp cloth.

If toilet bowl cleaner gets on the plastic components.

- Wipe down the component surface with a wet cloth and wipe dry.



Tip  1

- Do not use a dry cloth or toilet tissue to wipe plastic components as this may scratch the surfaces.
- Be careful not to get water on the electrical components. Always wipe up any excess detergent and water that gets into crevices.

Tip  2

Always keep the toilet seat sensor, motion detection sensor and remote control receiver free from dust and dirt to ensure optimum operation. (See page 39-45.)

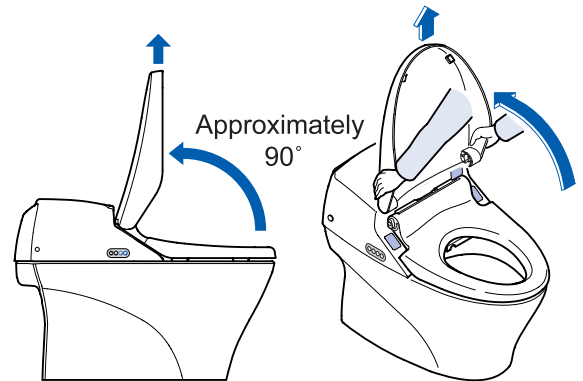
Thorough Cleaning of the Product

Cleaning the main unit, toilet seat and lid.

- Each component can be disassembled for a thorough cleaning.

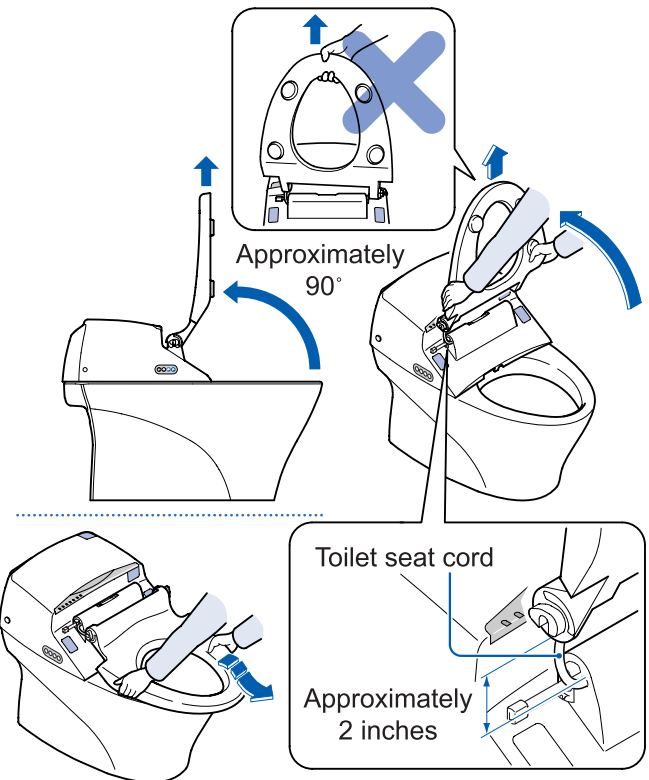
1 Remove the lid.

- Open the lid at a 90° angle, grasp with both hands and lift straight up.



2 Remove the toilet seat

- Open the toilet seat at a 90° angle, grasp with both hands and lift straight up.
- * The toilet seat cord cannot be removed.
- * The toilet seat cord can only be extended about 2 inches. Do not apply force to pull the cord out.
- * The toilet seat should only be removed at a 90° angle. Do not apply force to pull up on the seat as this may cause it to break.



- After removing the toilet seat, place it on top of the toilet bowl for cleaning.

3 Clean the components

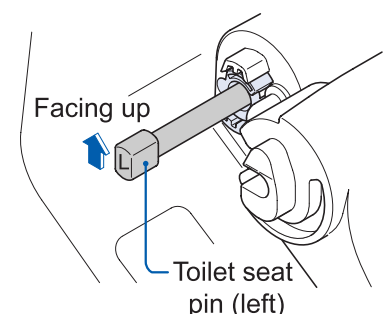
- Refer to the "Daily Care and Maintenance" instructions on page 30.

4 Make certain that the toilet seat pins are facing up. (Both right and left pins.)

- If the toilet seat pins are not facing up, push the



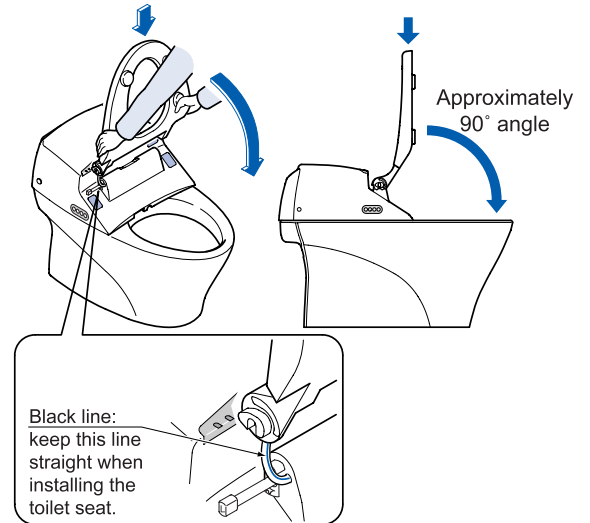
button on the remote controller.



5

Reattach the toilet seat

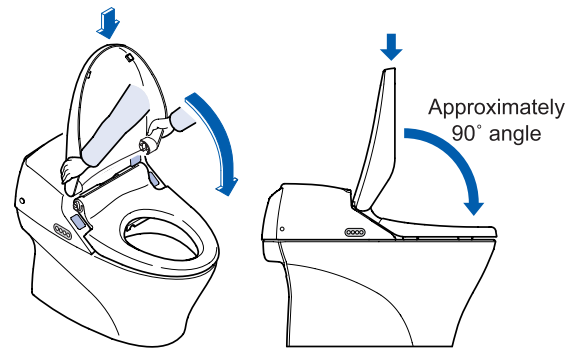
- Grasp the toilet seat with both hands, making sure to keep the blue line on the seat cord straight.
- Insert the toilet seat straight into the seat pins.
- Lower the toilet seat.
- * Be careful not to get the seat cord twisted when installing the toilet seat.
- * Do not install the seat at an angle or use force when pushing down on it.



6

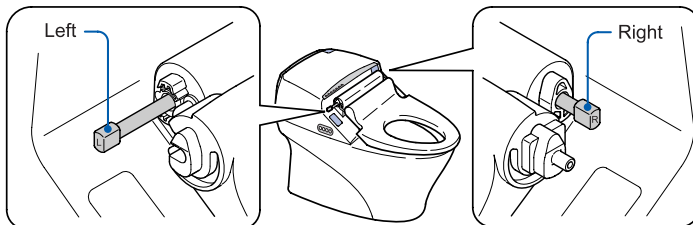
Reattach the lid

- Grasp the lid with both hands and insert straight down into the toilet seat pins.
- Lower the lid.
- * Do not install the lid at an angle or use force when pushing down on it.



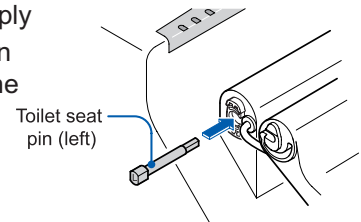
If the toilet seat pins come out:

1. Check the toilet seat pin tips for "right" and "left" markings to ensure proper installation.



2. Insert the right and left pins all the way into the respective slots.

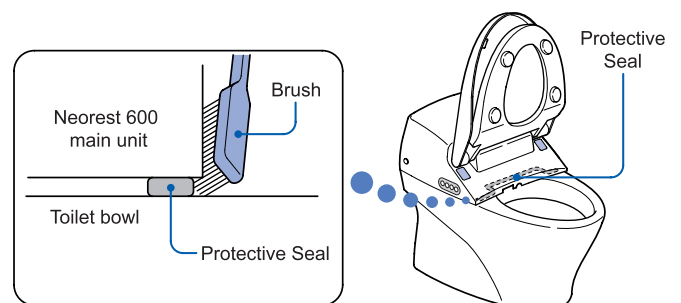
- * Do not apply force when pushing the pins into the slots.



Cleaning crevices between the main unit and the toilet bowl. (Perform once a week.)

- Perform routine cleaning of the crevices to prevent water and dirt from getting into the packing.

Clean the crevices with a small brush.



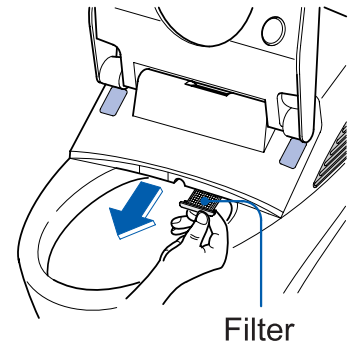
Cleaning the deodorizer filter.

(Filter should be cleaned once a month.)

- Follow the steps below to remove dust from the filter.

1 Remove the deodorizer filter.

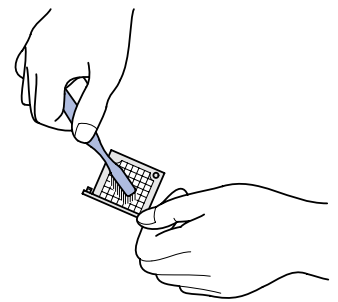
- Pull the filter (gray) forward.



2 Clean the deodorizer filter

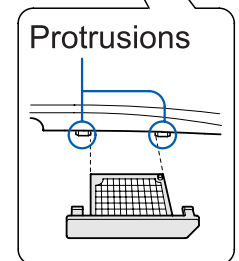
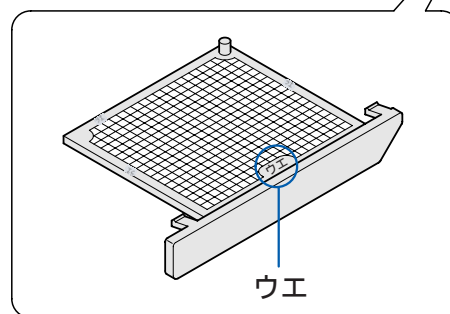
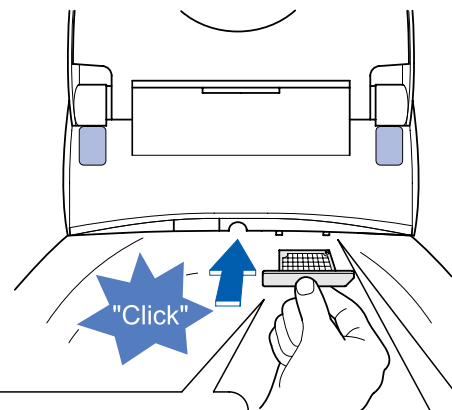
- Brush the dust off of the filter surface with a small brush, such as a toothbrush.

Tip  1



3 Reinstall the deodorizer filter

- Look for the "ウエ" markings on the top of the filter.
- Insert the filter into the unit using the two small protrusions as a guide, as shown in the figure. Push the filter into the slot until it clicks into position.
- * Never use your NEOREST without a filter as this may cause a malfunction.



Tip  1

Cleaning the filter

- When cleaning the filter by running it under water, make sure to dry the filter thoroughly before reinstalling.
If the filter becomes extremely dirty, we recommend that you replace it with a new one.

Other Care and Maintenance

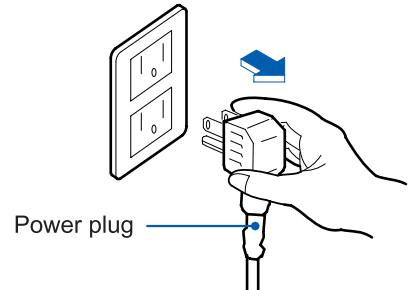
Cleaning and inspecting the power plug.

- Check the power plug once a month to make sure that it is in proper working condition.

1

Remove the power plug.

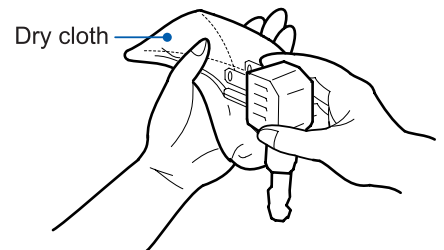
- Grasp plug (never the cord) and pull straight out.



2

Clean the power plug

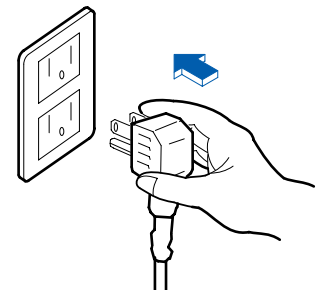
- Remove any dirt and dust that has collected on the plug prongs with a dry cloth.



3

Insert the power plug

- Insert the power supply plug all the way into the wall outlet.



Cleaning the water supply filter.


- When the water pressure gets low, it's time to clean the feed water supply filter.

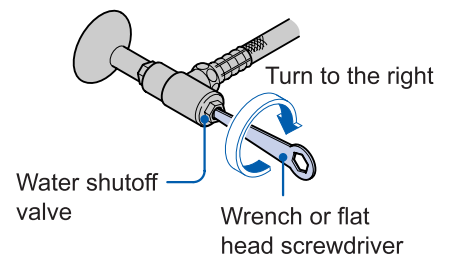
1

Shut off the water valve and turn off the water supply.

- Shut off the water valve with the wrench provided.

Caution!

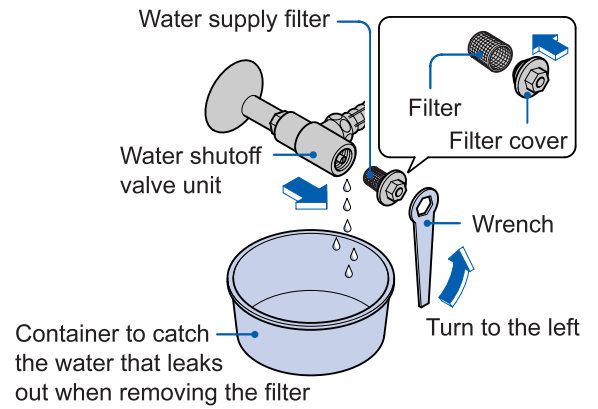
 Do not remove the water supply filter with the water shutoff valve in the OPEN position



2

Remove the water supply filter

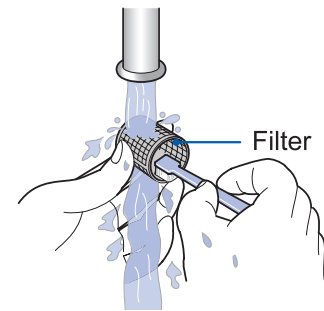
- Remove the filter cover with the wrench.
- The filter will come out with the filter cover.



3

Clean the filter

- Remove the filter and clean the mesh by running it under water. **Tip 1**
- * Use a small brush, such as a toothbrush to remove any dirt that is lodged in the mesh.
- * Remove any dirt that may have deposited inside the water shutoff valve unit with a cotton swab.



4

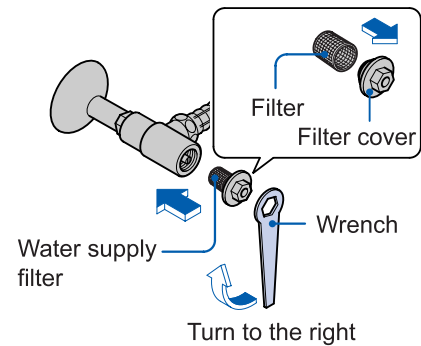
Reinstall the water supply filter

- Reassemble the water shutoff valve unit and tighten the filter cover with the wrench

Caution!

Always perform the following

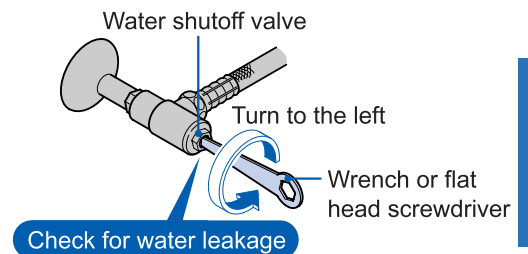
Be sure to tighten the water supply filter securely. A loose filter may result in water leakage.



5

Open the water shutoff valve

- Open the water shutoff valve with the wrench.
- Confirm that there is no water leakage from the water shutoff valve unit.



Tip 1

Cleaning the filter

- Use only plain water to clean the filter. Do not use detergent or cleaning solution.
- Do not apply force when handling the filter to avoid bending it.

If the filter becomes extremely dirty, we recommend that you replace it with a new one.

Cleaning the wand.

- The wand can be cleaned without spraying warm water.

1

Extend the wand.

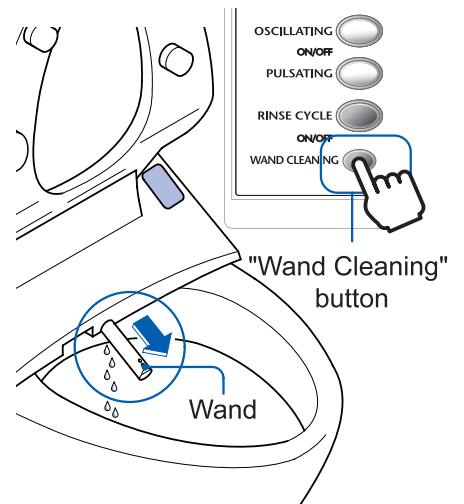
- Push the "Wand Cleaning" button on the remote controller.



The wand comes out.

- The wand will automatically retract after 5 minutes.

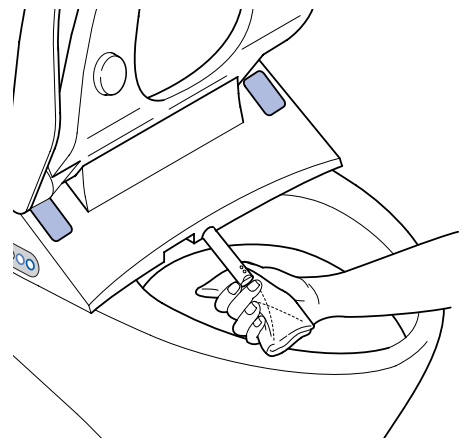
Tip  1



2

Clean the wand.

- Wipe the wand clean with a soft damp cloth.
- * Do not apply force when pushing or pulling the wand as this may damage the mechanism.



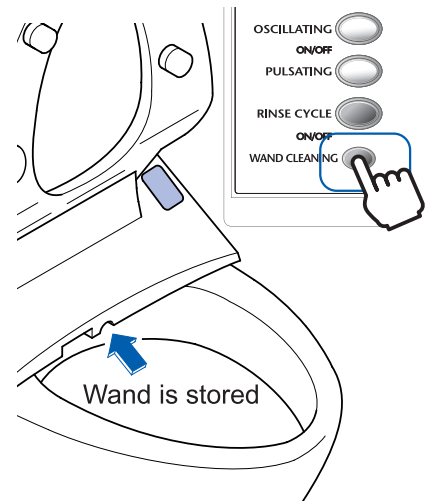
3

Store the wand.

- Push the "Wand Cleaning" button again.



The wand is stored and automatically washed



Tip  1

Some water will spray from the base of the wand when cleaning it

Cleaning the toilet bowl.

- The toilet bowl can easily be cleaned while flushing with water. Perform routine cleaning of the toilet bowl.
- * Be careful not to get toilet bowl cleaner on the plastic components.

Clean the toilet bowl with toilet bowl cleaner before pushing the "Rinse Cycle" button.

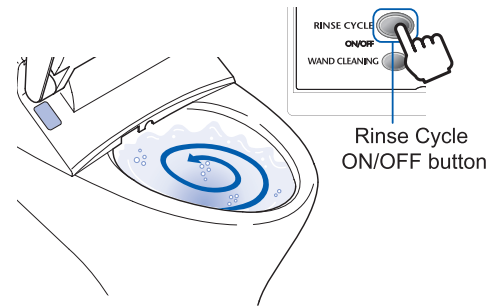
Tip  2

- After using toilet bowl cleaner or disinfectant to clean the toilet bowl, flush the bowl right away (within 3 minutes) and leave the toilet seat and seat cover open. Wipe away any cleaner that spills onto the toilet seat. (To prevent evaporated gas from the toilet bowl cleaner from getting into the main unit of the Washlet.)

1 Flush the toilet bowl.

- Push Rinse Cycle button

Water swirls into the toilet bowl



2 Clean the toilet bowl.

- Clean the toilet bowl while the water is being sprayed into the bowl.
- Water swirls to wash the bowl for 30 seconds.

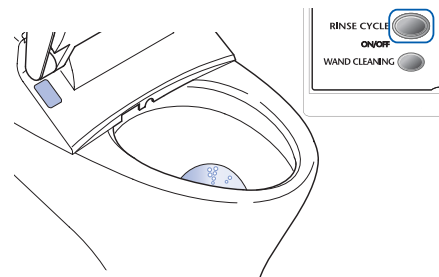
During the Rinse Cycle, pushing the button again will move to the next step of the cycle before 30 seconds is up.

3 Toilet automatically switches to Flush mode

- Flush mode lasts for 30 seconds.
- Clean bottom of bowl (trap-way).

The water in the toilet bowl gets flushed.

Tip  3



4 Automatically refills bowl

If you want to stop the Rinse Cycle:

- Push the "Rinse Cycle" button, the unit will flush once and then refill.

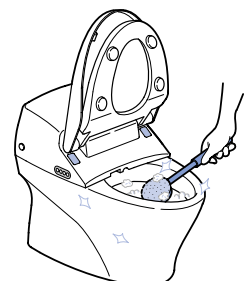
Tip  2

Cleaning the toilet bowl

- Cleaning solution can be used to wash the toilet bowl, but be sure to flush out the toilet bowl immediately after use to prevent it from staining the toilet bowl.

Tip  3

- Pushing the "Rinse Cycle" button again at any time will interrupt the cycle, stop the water flow and refills the water automatically.



Preventing Damage Due to Frozen Water Pipes

During cold months, or when there is a risk of frozen water pipes, follow the steps below to prevent the pipes and hoses from freezing, which could cause damage to the components and result in water leakage.

How to Prevent Damage (Pipe Drain Method)

- The water in the toilet bowl and Washlet unit are automatically drained at fixed intervals to prevent the pipes and hose from freezing.

Caution!

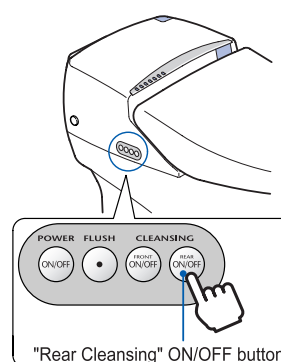
Before performing the pipe drain method turn OFF the "Auto OPEN/CLOSE" button and the "Auto Flush" buttons and keep the toilet bowl seat and cover in the lowered position.

Push the "Rear Cleansing" button on the main controls for 10 seconds or longer.

Tip 1

Begins the pipe drain method.

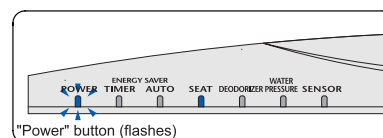
- The "POWER" light on the main unit flashes on and off.
- Warm water sprays from the stored wand at 5 minute intervals.
- The water in the toilet bowl flushes at 10 minute intervals.



"Rear Cleansing" ON/OFF button

For best results:

- Set the water temperature and the toilet seat temperature settings on the remote controller to the maximum setting.
- Keep the toilet seat and lid closed.



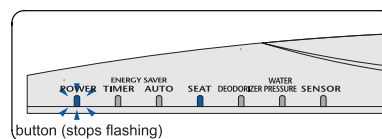
"Power" button (flashes)

To Stop the Pipe Drain Function.

Push the "Rear Cleansing" button on the main controls for 10 seconds or longer.

Stops the pipe drain method.

- The "Power" light on the main unit stops flashing.



button (stops flashing)

Tip 1

When there is a risk of frozen pipes:

- Refrain from using the energy saving functions to avoid a greater risk of frozen pipes.
To turn off the Energy Saving Timer ON/OFF, see page 24.
To turn off the Auto ON/OFF, see page 27.
- Even when not using the unit over extended periods of time, be sure to keep the power supply plug plugged into the wall outlet and the "POWER" button ON.

Troubleshooting

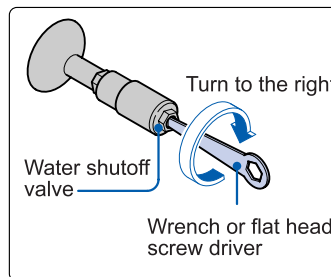


WARNING



Always perform the following

If water leakage occurs, close the water shutoff valve and turn off the water.



■ Please check the following before calling for service.

Performance

Problem	Possible Cause	Solution
Completely fails to operate	Is there a power outage or is the circuit breaker out?	Wait until the power is restored. Turn the circuit breaker back ON.
	Is the "Power" light on the main unit OFF?	Push the "Power" button on the main controls. See page 12.

Rear Wash · Front Wash

Problem	Possible Cause	Solution
Water will not spray.	Has water stopped flowing from the main supply?	Push the stop button and wait until the main water supply is restored.
	Is the water shutoff valve closed?	Open the water shutoff valve. (See page 12.)
	Is the toilet seat sensor working properly?	Refer to the toilet seat sensor instructions on page 44.
The water pressure is low.	Is the water pressure setting set too low?	Push the water pressure adjustment button on the remote controller.
	Is the water supply filter dirty?	Clean the water supply filter. (See page 34.)

Rear Wash - Front Wash (Continued)

Problem	Possible Cause	Solution
The wash water is too cold	Is the water temperature setting button OFF or set too low?	Adjust the water temperature by pushing the + or - buttons on the remote controller. (See page 15.)
The wash water stops spraying while the unit is in use	If the "Rear Wash", "Soft Wash" or "Front wash" button are pushed, the water spray automatically stops after 5 minutes.	Push the "Rear Wash", "Soft Wash" or "Front wash" button again. (See page 13.)
	Is the toilet seat sensor working properly?	Refer to the toilet seat sensor instructions on page 44.
Water sprays into the toilet bowl from the wand for a few seconds when sitting on the toilet seat	When the toilet seat sensor is enabled, a small amount of water is discharged before warm water is sprayed from the wand. Also, changing your position while seated on the toilet will cause the toilet seat sensor to turn ON or OFF and a small amount of water may discharge from the wand area. This is not due to a malfunction.	—

Heated Toilet Seat

Problem	Possible Cause	Solution
The toilet seat does not get warm.	Is the toilet seat temperature setting turned OFF or set too low?	Adjust the seat temperature by pushing the + or - buttons on the remote controller. (See page 15.)
	Is the timer on "Energy Saving" mode?	It takes 15 minutes for the toilet seat to get warm after sitting on it.
	Is the Auto Temperature Preset turned ON?	It takes 5 minutes for the toilet seat to get warm after sitting on it.
The toilet seat is too cold.	In case of continued sitting, the seat will shut off after 1 hour. Seat heater will restart after person gets up.	—

Warm Air Drying

Problem	Possible Cause	Solution
The warm air dryer does not get warm.	Is the warm air dryer temperature set too low?	Adjust the dryer temperature by pushing the + or - buttons on the remote controller. (See page 15.)
The warm air dryer stops working while in use.	If the "dry" button is pushed, the warm air dryer automatically stops after 10 minutes.	Push the "dry" button again to restart the warm air dryer.
	Is the toilet seat sensor working properly?	Refer to the toilet seat sensor instructions on page 44.
The warm air dryer completely fails to operate.	Is the toilet seat sensor working properly?	Refer to the toilet seat sensor instructions on page 44.

Deodorizer

Problem	Possible Cause	Solution
The deodorizer is not working.	Is the toilet seat sensor working properly?	Refer to the toilet seat sensor instructions on page 44.
Odors are sometimes not eliminated thoroughly.	Is the deodorizer filter dirty?	Clean the deodorizer filter. (See page 33.)
The deodorizer turns on by itself.	In the following situations, the toilet seat sensor detects motion and activates the deodorizer: <ul style="list-style-type: none"> ● when standing in front of the toilet seat; ● when closing/opening the toilet seat and lid; ● when cleaning the toilet; ● when using the toilet bowl wash lever. 	—

Energy Saving Functions

Problem	Possible Cause	Solution
The Auto ON/OFF does not work even after pushing the button.	It may take 2~3 days to determine the correct time frame for when the toilet is not used frequently.	—
	If the toilet is used at the same time 3 times a week or more, the energy saving function may not work. The time will not be considered an energy save time.	—
The Energy Saving functions fail to operate.	In case of power failure or power cord disconnect.	Energy Saving will not work correctly on that day. The feature will begin working on the next day.
	When batteries in remote controller are replaced.	User settings may be changed. Please reset preferred settings. (See page 23 or 25.)

Auto OPEN/CLOSE

Problem	Possible Cause	Solution
The lid will not automatically open and close.	Is the Auto OPEN/CLOSE function OFF? When it is OFF, the Auto OPEN/CLOSE will not be display.	Push the "Auto" function of the seat and lid OPEN/CLOSE on the remote controller to turn it ON. (See page 17, 18.)
	Is the sensor light on the main control display ON? Are you facing the toilet when standing in front of it?	Stand facing the toilet. (See page 17, 18.)
	Is the toilet seat sensor or motion detection sensor covered with something?	Make sure that the sensors are not covered as this will prevent the infrared light from projecting.
	Is the toilet seat sensor or motion detection sensor dusty or wet?	Remove any dust or water drops that may have settled on the sensors.
	Are there any wall hangings or fixtures located directly in front of the toilet?	Do not hang any decorations or fixtures directly in front of the unit.
	Was the lid manually closed or closed by remote. The lid will not reopen for 10 seconds.	Move away 1 foot and wait ten seconds, then try again. (See page 17.)
	When lid is opened, but the seat is not sat on for more than 6 seconds, then the lid will not close for 5 minutes.	—
	When both seat and lid are opened, but it is not stood in front of for more than 6 seconds, then the lid will not close for 5 minutes.	—
The lid closes by itself.	Is the sensor light located on the main unit display OFF? If the light is OFF and the user stands facing the toilet, the lid will not automatically close.	Move away from the toilet and wait for approximately 90 seconds. (See page 18.)
	The sensors in the toilet seat sensor and motion detection sensor may not work properly depending upon the way in which the user sits on the toilet seat, or stands in front of it, or the color of the clothing or type of fabric worn.	Change your position on the toilet seat or the position in which you are standing or raise the clothing you are wearing to allow the sensor to detect bare skin.
Is the toilet seat sensor or motion detection sensor covered up by your clothing? Are the sensors covered with dust or water?	Make sure that the sensors are not covered, as this will prevent the infrared light from projecting.	

Remote Controller

Problem	Possible Cause	Solution
The remote controller does not work.	Do the batteries need replacing?	Replace the batteries (See page 11.)
	Are the batteries inserted in the correct position (+/-)?	Reinsert the batteries in the correct position.(See page 11.)
	Is the remote controller transmitter covered with something?	Remove any objects that may be covering the transmitter.
	Is the remote controller transmitter dirty or wet?	Remove any dirt or water that may have settled on the transmitter.
	Is the toilet seat sensor working properly?	Refer to the toilet seat sensor instructions on page 44.
	Does the remote controller display momentarily go out when the buttons are pushed?This is an indication that the batteries are worn.	Replace the batteries.(See page 11.)

Remote Controlled Flushing

Problem	Possible Cause	Solution
Nothing happens when the remote control button for flushing the toilet bowl is pushed.	Do the batteries need replacing?	Replace the batteries. (See page 11.)
	Has the button been pushed repeatedly?	The remote control buttons for flushing the toilet bowl cannot be pushed repeatedly. Wait 10 seconds before pushing the buttons again.
	Is the remote controller transmitter dirty or wet?	Remove any dirt or water that may have settled on the transmitter.

Remote Controlled Toilet Seat/Lid OPEN/CLOSE

Problem	Possible Cause	Solution
Nothing happens when the remote control button for opening/closing the toilet seat/lid is pushed.	Do the remote control batteries need replacing?	Replace the batteries. (See page 11.)
	Is the remote controller transmitter dirty or wet?	Remove any dirt or water that may have settled on the transmitter.

Toilet Seat Sensor

Problem	Possible Cause	Solution
Even when not seated on the toilet seat, the "Rear Wash", "Air deodorizer" and "Warm Air Dryer" functions turn on when the buttons are pushed.	Is the toilet seat sensor covered with something?	Make sure that the sensors are not covered, as this will prevent the infrared light from projecting. (See page 14.)
	Is the toilet seat sensor dirty or wet?	Remove any dirt or water that is on the toilet seat sensor.
Even when seated on the toilet seat, the "Rear Wash", "Air deodorizer" and "Warm Air Dryer" functions do not turn on when the buttons are pushed.	The sensors in the toilet seat sensor may not work properly depending upon the way in which the user sits on the toilet seat, or stands in front of it, or the color of the clothing or type of fabric worn.	Change your position on the toilet seat or raise the clothing you are wearing to allow the sensor to detect bare skin.
	Is the toilet seat sensor covered up by your clothing? Are the sensors covered with dust or water?	Make sure that the sensors are not covered, as this will prevent the infrared light from projecting.

Auto Flush

Problem	Possible Cause	Solution
The toilet bowl flush function does not automatically turn on.	Is the Auto Flush function OFF? When it is OFF, the "Flush" light on the remote controller display will not be lit up.	Push the Auto Flush on the remote controller to turn it ON. (See page 21~22.)
	Once the Auto Flush button has been pushed, the Auto Flush function will not operate again until 60 seconds have passed.	Use the "Flush" button on the remote controller to flush the toilet.
	Is the toilet seat sensor or motion detection sensor covered with something?	Make sure that the sensors are not covered, as this will prevent the infrared light from projecting.
	When the remote controller is used to flush the toilet, the Auto Flush function will not operate. However, if the motion detection sensor continues to detect motion for more than 60 seconds, the Auto Flush function will operate.	—
	Is the toilet seat sensor or motion detection sensor dirty or wet?	Remove any dirt or water that is on the toilet seat sensor or motion detection sensor.
	Are there any wall hangings or fixtures located directly in front of the toilet?	Do not hang any decorations or fixtures directly in front of the unit.
	In case of sitting for less than 6 seconds, the automatic flush will not activate.	Sit for more than 6 seconds. See page 21.
	When both seat and lid are opened, but it is not stood in front of for more than 6 seconds, the automatic flush will not activate.	Stand in front for more than 6 seconds. See page 22.

Auto Flush (Continued)

Problem	Possible Cause	Solution
The toilet bowl flush function does not automatically turn on.	Is the "sensor" light on the main unit display OFF? When it is OFF, standing in front of the toilet will not activate the Auto Flush function.	Move away from the toilet and wait for 3 seconds. (See page 21~22.)
The toilet flushes by itself.	The sensors in the toilet seat sensor and motion detection sensor may not work properly depending upon the way in which the user sits on the toilet seat, or stands in front of it, or the color of the clothing or type of fabric worn.	Change your position on the toilet seat or the position in which you are standing or raise the clothing you are wearing to allow the sensor to detect bare skin.
	Is the toilet seat sensor or motion detection sensor covered up by your clothing? Are the sensors covered with dust or water?	Make sure that the sensors are not covered, as this will prevent the infrared light from projecting.

Other

Problem	Possible Cause	Solution
The toilet does not flush properly (the "water pressure" light is flashing).	Is the water shutoff valve open?	Make sure that the water shutoff valve is open enough to allow proper flow of water.
	Is the water supply filter dirty?	Clean the water supply filter. (See page 34.)
	Is water being used in other areas of the household or building? (The "water pressure" light flashes if the water pressure is too low for the toilet to flush properly.)	—
Water does not spray when the toilet is flushed.	Is the water shutoff valve closed?	Make sure that the water shutoff valve is open enough to allow proper flow of water.
	Has the water supply to the house been cut off?	Wait until the water supply is restored.
Water sprays from the area near the wand even though no one is seated on the toilet seat.	In the following situations, the toilet seat sensor may become activated: ● when standing in front of the toilet seat; ● when closing/opening the toilet seat and lid; ● when cleaning the toilet; ● when using the toilet bowl flush lever	—
	If the temperature inside the toilet unit is too cold, the Washlet automatically drains itself of water to prevent frozen pipes. When this happens, you will hear water draining for approximately 10 seconds, but this is not a malfunction.	—
Water leaks from the pipe fittings.	Are the bolts loose?	Tighten the bolts with a monkey wrench.

Specifications

Item		Contents	
Power		120 V AC, 60 Hz	
Power Usage		1288 W	
Average Power Consumption per Hour		20 Wh	
Flush Volume		1.6 Gallons per Flush (6.0 LPF) with alternate 1.2 Gallon light flush (4.5 LPF)	
Cord Length		3 feet	
Flush Type		"Cyclone" Siphon jet	
Bowl Style		Elongated	
Washlet	Wand Flow Rate	Rear	9-14.5 oz/m (270-430 mL/min) (29 PSI max pressure)
		Soft	9-14.5 oz/m (270-430 mL/min) (29 PSI max pressure)
		Front	9.5-14.5 oz/m (290-430 mL/min) (29 PSI max pressure)
	Water Temp		86-104°F (30-40°C)
	Heater Power Consumption		1200 W
	Features		Oscillate, Pulsate, change positions
	Safety		Temperature Fuse, Bi-metal sensor (auto reset), and Float switch (prevent boil)
	Backflow Prevention		Vacuum Breaker, Check Valve, Duckbill
Dryer	Temperature		104-138°F (40-59°C)
	Air Volume		10.5 feet ³ /min (0.3 m ³ /min)
	Heater power		350 W
	Safety		Temperature Fuse
Heated Seat	Temperature		81 - 97°F (27-36°C)
	Heater Power		50 W
	Safety		Temperature Fuse
Deodorizer	Catalyst		Activated Oxygen
	Air Volume		5.5 feet ³ /min (0.16 m ³ /min)
Remote Power		2 AA batteries (3 Volt)	
Water Supply Pressure		20-80 PSI, Static (Use a minimum water supply pressure of 10 PSI (0.07MPa) flowing)	
Water Supply Temperature		32 - 96°F (0-35°C)	
Ambient Temperature		32 - 104°F (0-40°C)	
Size		17" x 32.2" x 22.2" (436 x 820 x 564 mm)	
Weight		108 lbs (49 kg) (28.6 lbs (13 kg) top, 79.4 lbs (36 kg) bowl)	



Limited Warranty

Three Year Limited Warranty

1) TOTO USA, Inc ("TOTO") warrants its products to be free from manufacturing defects under normal use and service for a period of three (3) years from the date of purchase. This warranty is extended only to the ORIGINAL PURCHASER.

TOTO's obligations under this warranty are limited to repair or replacement, at TOTO's option, of products or parts found to be defective, provided that such products were properly installed and used in accordance with instructions. TOTO reserves the right to make such inspections as may be necessary in order to determine the cause of the defect. TOTO will not charge for labor or parts in connection with warranty repairs or replacements. TOTO is not responsible for the cost of removal, return and/or reinstallation of products.

2) This warranty does not apply to the following items:

- a. Damage or loss sustained in a natural calamity such as fire, earthquake, flood, thunder and/ or electrical storm, etc.
- b. Damage or loss resulting from any unreasonable use, misuse, abuse, negligence, or improper maintenance of the product.
- c. Damage or loss resulting from removal, improper repair, or modification of the product.
- d. Damage or loss resulting from sediments or foreign matter contained in a water system.
- e. Damage or loss resulting from improper installation or from installation of a Washlet in a harsh and/or hazardous environment.

This includes locations where the water pressure exceeds the maximum allowed by local codes.

Note: model codes allow a maximum of 80 PSI. Check local code for requirement.

3) This warranty applies only to the Washlet, and not to any other items such as the toilet bowl, etc.

4) To obtain warranty repair service under this warranty, you must take the defective product or deliver it prepaid (shipping and handling) to an authorized TOTO USA, INC. service center. To find the closest authorized dealer, please call 1-800-350-TOTO (8686).

5) In order for this limited warranty to be valid, TOTO USA, INC. must receive the completed attached warranty registration card and your proof of purchase within 30 days of the original purchase date.

6) If the danger label which has been placed over the seams on the back of the Washlet's main unit is broken or otherwise not intact, this limited warranty is void.

This written warranty is the only warranty made by TOTO. Repair or replacement as provided under this warranty shall be the exclusive remedy available to the purchaser. TOTO shall not be responsible for loss of the product or for other incidental, special or consequential damages or expenses incurred by the purchaser, or for labor or other costs due to installation or removal, or costs of repairs by others, or for any other expense not specifically stated above. TO THE EXTENT PERMITTED BY LAW, TOTO DISCLAIMS ALL OTHER IMPLIED WARRANTIES INCLUDING THAT OF MERCHANTABILITY AND FITNESS FOR A PARTICULAR PURPOSE. TOTO ALSO DISCLAIMS ANY LIABILITY FOR SPECIAL, INCIDENTAL, OR CONSEQUENTIAL DAMAGES. Some states do not allow limitations of how long an implied warranty lasts or the exclusion or limitation of special, incidental or consequential damages, so these limitations and exclusions may not apply to you. This warranty gives the consumer specific legal rights. You may also have other rights that vary from state to state. This warranty is to the original purchaser only, and excludes product damage due to installation error, product abuse, or product misuse, whether performed by a contractor, service company, or the consumer.

Warning! TOTO shall not be responsible or liable for any failure of, or damage to, this plumbing product or product component caused by either chloramines in the treatment of public water supply or cleaners containing chlorine (calcium hypochlorite).

Note: The use of a high concentrate of chlorine or chlorine related products can seriously damage the fittings. This damage can cause leakage and serious property damage.

THIS IS OUR EXCLUSIVE WRITTEN WARRANTY.

TOTO

1155 Southern Road
Morrow, GA 30260
(770) 282 8686

For your safety, be sure to inspect your Neorest 600 occasionally.

- Is the power plug abnormally hot?
- Is the power plug covered with dust?
- Is the outlet loose?
- Is your Neorest 600 operating differently than usual?

* In case anything is abnormal, contact TOTO USA to prevent a fire or an electrical shock.

Free Manuals Download Website

<http://myh66.com>

<http://usermanuals.us>

<http://www.somanuals.com>

<http://www.4manuals.cc>

<http://www.manual-lib.com>

<http://www.404manual.com>

<http://www.luxmanual.com>

<http://aubethermostatmanual.com>

Golf course search by state

<http://golfingnear.com>

Email search by domain

<http://emailbydomain.com>

Auto manuals search

<http://auto.somanuals.com>

TV manuals search

<http://tv.somanuals.com>