



GENERAL

The A89SM shock mount reduces mechanical noise transmission by more than 20 dB. Designed for the Shure SM89 shotgun microphone, it also fits any 3/4" diameter microphone.

FEATURES

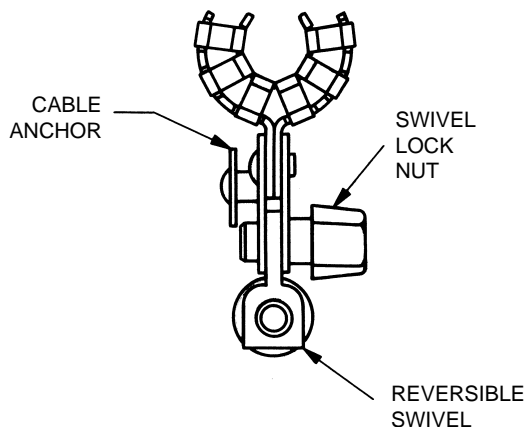
- Three integrated thread sizes allow you to attach the mount to stands or booms with 3/8–16, 5/8–27, or 5/16–18 threads.
- A cable securing mechanism prevents the transmission of mechanical noise through the cable and connector.
- Locking, pivoting design provides maximum aiming capabilities.

MOUNTING

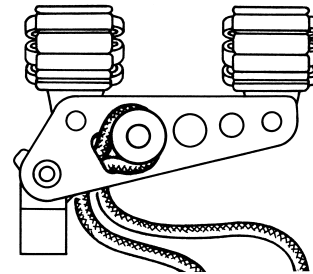
Attach the A89SM to a stand or boom. If necessary, install the 5/16" adapter socket, or use the 3/8" or 5/8" threads in the reversible swivel.

To reverse the orientation of the swivel adapter, remove the swivel by unscrewing the swivel lock nut, then reinstall it with the desired orientation.

When not using the 5/16" socket, store it by screwing it into the threaded hole on the side of the A89SM, next to the cable loop slot.



SECURING THE CABLE



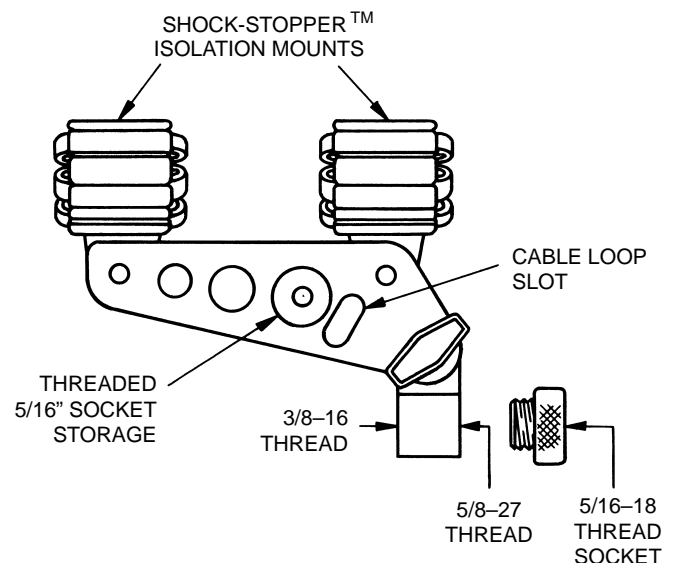
SECURING THE MICROPHONE CABLE

Figure 1

Secure the cable to the cable anchor using the following steps. Refer to Figure 1.

1. Place the microphone in the shock mount and connect the cable to the microphone.
2. Form a loop in the cable and thread it through the cable loop slot.
3. Slip the loop over the cable anchor and tighten it by pulling back on the cable.

IMPORTANT: Be sure to leave some slack in the cable between the microphone and the anchor.



SHURE Incorporated Web Address: <http://www.shure.com>
5800 W. Touhy Avenue, Niles, IL 60714-4608, U.S.A.
In U.S.A., Phone: 1-847-600-2000 Fax: 1-847-600-1212
In Europe, Phone: 49-7131-72140 Fax: 49-7131-721414
In Asia, Phone: 1-852-2893-4290 Fax: 1-852-2893-4055
International Fax: 1-847-600-6446

Free Manuals Download Website

<http://myh66.com>

<http://usermanuals.us>

<http://www.somanuals.com>

<http://www.4manuals.cc>

<http://www.manual-lib.com>

<http://www.404manual.com>

<http://www.luxmanual.com>

<http://aubethermostatmanual.com>

Golf course search by state

<http://golfingnear.com>

Email search by domain

<http://emailbydomain.com>

Auto manuals search

<http://auto.somanuals.com>

TV manuals search

<http://tv.somanuals.com>