

THE SHARPER IMAGE®

Professional Plus™
Ionic Breeze®
MIDI™
Silent Air Purifier

SI853 Instructions

INCLUDES IMPORTANT
SAFETY INFORMATION.
READ ALL INSTRUCTIONS
BEFORE USING THIS APPLIANCE.
SAVE THESE INSTRUCTIONS.

SHARPER IMAGE DESIGN®



Dear Sharper Image Customer,

Thank you for your purchase of a Sharper Image product. We appreciate your business very much.

Our goal is that you will be completely satisfied with this product's quality and performance. We offer generous return privileges and excellent warranties on all our products.

Since 1977, The Sharper Image has shared the fun of discovering innovative products that make life better and more enjoyable. We've been in business a long time because we are an exciting place to shop and — just as importantly — we strive to deliver outstanding customer service that exceeds your expectations.

Enjoy your purchase!

Call 1-800-344-4444 for ordering and customer service, or visit

www.sharperimage.com, *our award-winning Website.*

Download from Www.Somanuals.com. All Manuals Search And Download.

Table of Contents

Warnings	5
Important Information - Please Read	7
Frequently Asked Questions about Ionic Breeze®	8
OzoneGuard™	9
General Instructions.....	10
Setup and Operation.....	10
Cleaning the Collection Grid	11
Thorough Cleaning.....	12
Additional Information	13
Statement of FCC Compliance	14

In rooms where candles or oil lamps are frequently burned, the smoke from these products tend to stick on and around the Ionic Breeze. Avoid placing the Ionic Breeze in a location where it will be subjected to smoke from oil lamps or candles.

Warnings

Warning: To reduce the risk of fire, electric shock or injury when using any electrical appliance, basic precautions should always be observed, including the following:

- This appliance operates at 110V AC and 50Hz or 60Hz only.
- Connect to a polarized outlet only.
- Plug is polarized with one blade wider than the other. The plug is only designed to fit in polarized outlet. Do not attempt to defeat this safety feature.
- Use indoors only.
- Before unplugging the unit from the outlet, turn off all the controls.
- Do not unplug by pulling the cord. Grasp the plug itself, not the cord, when unplugging from an outlet.
- Do not handle the plug or appliance with wet hands.
- Unplug from outlet when not in use and before servicing.
- Do not allow the appliance to be used as a toy. Close attention is necessary when the appliance is operated near children.
- Use only as described in this user manual.

Warnings

- Do not use if cord or plug appears to be damaged. If the appliance is not working properly, or has been dropped, damaged, left outdoors or dropped into water, return it to a service center or to the original place of purchase.
- Do not pull, lift or carry by the power cord. Do not use the cord as a handle, close a door on the cord, or pull the cord around or against sharp edges or corners.
- Keep the cord away from heated surfaces.
- A damaged power cord must be replaced by qualified service personnel only. There are no user-serviceable parts inside the unit. Any attempt to open the unit will void the warranty and could lead to serious damage to the unit and/or personal injury to the user.
- Do not put any object into openings. Do not continue to use with any opening blocked. Keep all openings free of dust, lint, hair or anything that may reduce airflow.
- Keep hair, loose clothing, fingers and all parts of the body away from openings.
- Do not operate the unit in areas where flammable or combustible products or vapors may be present.

READ AND SAVE THESE INSTRUCTIONS

Download from Www.Somanuals.com. All Manuals Search And Download.

Important Information – Please Read

The collection grid has many edges and areas that can trap water. Ensure the grid is completely dry before re-inserting it into the unit. If it is not completely dry, the unit could be damaged. If water is used to clean the grid, allow at least 24 hours for the collection grid to dry.

This unit should not be located near a fireplace, whether or not the fireplace is actually in operation. Dust and soot from the chimney could be rapidly drawn through the Ionic Breeze[®] air purifier and deposited on or around the unit.

In any area where this product is subjected to heavy pollution or smoke, it will be necessary to clean the collection grid more frequently.

If the unit begins to arc or make a “static-like” sound, turn the unit off, slide the collection grid out and slowly invert the unit several times. Replace the grid.

Frequently Asked Questions about Ionic Breeze®

How often is cleaning required?

Clean the grids at least every two weeks, anytime the Ionic Breeze makes a sound or when the Cleaning Overdue indicator illuminates.

How should it be cleaned?

Wipe the removable collection grid with a damp cloth, paper towel or sponge. **It is very important that the collection grid be allowed to dry completely before returning it to the main housing.**

What is the clean fresh scent I smell?

The scent is ozone, (O₃), a combination of three oxygen atoms. (The U.S. government has set safe standards for ozone and the Ionic Breeze complies with those standards.)

Which power setting should I use?

If the odor of ozone is strong (for instance in a smaller room), you may prefer to have the power setting on medium or low.

Please read this product instruction manual for important safety information and operating instructions.

OzoneGuard™

The Ionic Breeze was packed with an OzoneGuard front grill preinstalled. To clean the OzoneGuard and the front grill, follow the directions for **Thorough Cleaning** of the front grill.

What does OzoneGuard™ do?

With the OzoneGuard in place, a significant portion of ground-level ozone inside the air purifier — including any trace levels of ozone by-product — is converted into oxygen before the cleaned air circulates back into the room.

Why is the OzoneGuard™ smaller than the grill itself?

The majority of the air output is directed toward the center of the grill and therefore a larger OzoneGuard isn't necessary.

Does the Ionic Breeze still have the Negative-Ion Feature™ option?

Yes it does. The new OzoneGuard front grill does not affect the popular Negative-Ion Feature of the *Professional Plus™* Ionic Breeze® air purifiers. An emitter at the bottom of the new grill has replaced the ionizing wires inside the original grill. The feature itself works the same way as before.

Please read this product instruction manual for important safety information and operating instructions.

General Instructions

Setup and Operation

Place Ionic Breeze on a level surface, at least twelve inches from the wall and furniture. Plug into a polarized 110V outlet. (Read Warnings for details.)

Switch the **MODE CONTROL** to the desired setting:

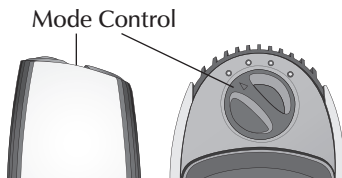
LOW: For small rooms or rooms where the door is usually closed.

MEDIUM: For average-sized rooms.

HIGH: For large rooms and higher traffic areas.

These are recommended settings. Adjust to your own comfort level.

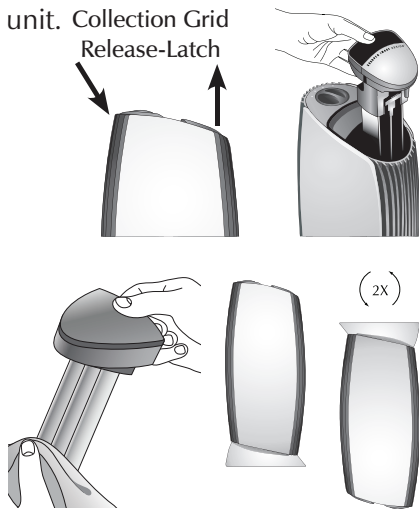
This *Professional Plus*™ model features 3 charged collection blades separated by 2 driver blades. This improves the particle capture rate.



Cleaning the Collection Grid

Clean the grid every one or two weeks. As a reminder, the Cleaning Overdue indicator will turn amber after two weeks. If the Cleaning Overdue indicator turns red, the unit has shut down because of excessive dirt or circuitry problems. In many cases, a thorough cleaning will return the unit to normal operation.

1. Before cleaning, unplug the unit.
2. Remove the collection grid by releasing the latch and pulling the grid from the top of the unit.
3. Use a dry or slightly damp towel or sponge to quickly wipe the dust from each of the three collection bars.
4. Before replacing the grid, invert the entire unit two or three times.

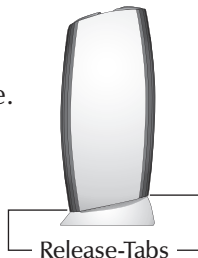


Thorough Cleaning

If the unit makes noise during operation, a thorough cleaning of the grid, back grill and OzoneGuard front grill may be required.

Note: The OzoneGuard cannot be detached from the front grill. The OzoneGuard has sharp edges; use caution when cleaning.

1. Before cleaning, unplug the unit.
2. Release the back grill and the OzoneGuard front grill by lifting the blue **RELEASE-TABS** on the bottom of the grills. Slide up to remove.
3. Use a hair dryer to blow dust from the interior or a vacuum to remove the dust.
4. The grills can be cleaned with a mild detergent and warm water. Before returning to unit, rinse and **allow to dry**.



Do not use a dishwasher to clean any part of this unit.

CAUTION: Do not use the product if the ionizing wires are broken or either grill appears damaged.

To order a replacement grill, call 1-800-344-5555.

Additional Information

The exterior of the unit can be cleaned using a cloth or sponge and a solution of one part household bleach to five parts water or any bleach-based spray cleaner.

Before plugging the unit back into an outlet, allow the surface to dry completely.

The unit will not function while the collection grid is removed or either of the grills are removed.

The majority of collected particles will gather on the removable stainless steel grid. Over time, debris will accumulate inside the unit. To access the inside, remove the front and rear grills. (See section titled "Thorough Cleaning.")

The Ionic Breeze® air purifiers comply with current U.S. safety requirements for low ozone emissions for consumer products. We recommend that individuals with a history of respiratory disease consult with their doctor about possible heightened sensitivity to very low ozone.

Statement of FCC Compliance — Model SI853

WARNING: Changes or modifications to this unit not expressly approved by the party responsible for compliance could void the user's authority to operate the equipment.

This equipment has been tested and found to comply with the limits for a Class B digital device, pursuant to Part 15 of the FCC Rules. These limits are designed to provide reasonable protection against harmful interference in a residential installation. This equipment generates, uses, and can radiate radio frequency energy and, if not installed and used in accordance with the instructions, may cause harmful interference to radio communications. However, there is no guarantee that interference will not occur in a particular installation.

If this equipment does cause harmful interference to radio or television reception, which can be determined by turning the equipment off and on, the user is encouraged to try to correct the interference by one or more of the following measures:

Statement of FCC Compliance — Model SI853

- Reorient or relocate the receiving antenna.
- Increase the separation between the equipment and receiver.
- Connect the equipment into an outlet on a circuit different from that to which the receiver is connected.
- Consult the dealer or an experienced radio/TV technician for assistance.

One-Year Warranty

What Is Covered

This warranty covers any defects in materials or workmanship, with the exceptions stated below.

How Long Coverage Lasts

This warranty runs for one year from the date of original purchase.

What Is Not Covered

This warranty does not cover damage caused by misuse or use other than as intended and described in the product instruction manual, or loss or damage to batteries or removable parts.

What The Sharper Image Will Do

The Sharper Image warrants this product against defects in materials and workmanship. When repair is not practical, The Sharper Image will have the option to replace the defective product with a fully warranted, factory-reconditioned product that is the same or has similar functionality.

How to Obtain Service

Return the product and receipt, along with a brief explanation of the problem, to:

T.S.I. - Returns Department
2901-A West 60th Street
Little Rock, AR 72209

If you have questions please feel free to contact our customer service representatives at 1-800-344-5555 or by email at care@web.sharperimage.com.

This warranty gives you specific legal rights, and you may have other legal rights that vary from state to state.

© 2006 Sharper Image Corporation

Sharper Image Corporation
350 The Embarcadero, Sixth Floor
San Francisco, CA 94105-1218
(415) 445-6000

Shop online: **www.sharperimage.com**

Due to continuing improvements, actual product may differ slightly from the product described herein.
V1 05/06

Download from Www.Somanuals.com. All Manuals Search And Download.

Free Manuals Download Website

<http://myh66.com>

<http://usermanuals.us>

<http://www.somanuals.com>

<http://www.4manuals.cc>

<http://www.manual-lib.com>

<http://www.404manual.com>

<http://www.luxmanual.com>

<http://aubethermostatmanual.com>

Golf course search by state

<http://golfingnear.com>

Email search by domain

<http://emailbydomain.com>

Auto manuals search

<http://auto.somanuals.com>

TV manuals search

<http://tv.somanuals.com>