



**SanDisk Extreme[®] Pro[™] SDHC[™]/SDXC[™] UHS-I
ExpressCard[®] Adapter**
(PCI-e interface)



User Manual

Version 1.0

For **SDDR-300**

Technical Support

Worldwide: www.sandisk.com/support

Table of Contents

Overview	4
Features	4
Minimum system requirements	4
Specifications	4
Driver Installation	5
Installing driver for Microsoft® Windows®	5
Installing driver for Mac OS®	8
Using your SanDisk Extreme® Pro™ SDHC™/SDXC™ UHS-I ExpressCard® adapter	12
Transferring data to a memory card from a PC	12
Transferring data to a memory card from a Mac	12
Removing the card	12
Uninstalling the SanDisk Extreme® Pro™ SDHC™/SDXC™ UHS-I ExpressCard® adapter driver	13
Uninstalling the driver for Microsoft® Windows®	13
Uninstalling the driver for Mac OS®	14

STOP! IMPORTANT INFORMATION
READ THE FOLLOWING CAREFULLY BEFORE USING THE SANDISK READER/ADAPTER.
KEEP THESE INSTRUCTIONS FOR FUTURE REFERENCE.

Driver Download

Please go to http://kb.sandisk.com/app/answers/detail/a_id/5780 to download and update the latest drivers.

Safety Instructions

Keep the SanDisk Extreme® Pro™ SDHC™/SDXC™ UHS-I ExpressCard® adapter away from direct sunlight, moisture and temperature extremes. Do NOT bend, flex or drop your SanDisk Extreme Pro SDHC/SDXC UHS-I ExpressCard Adapter. The user is responsible for complying with all environmental, safety and other usage specifications outlined in this User Manual.

Technical Support

If you have questions about the use or features of your SanDisk Extreme Pro SDHC/SDXC UHS-I ExpressCard adapter as well as other SanDisk products, please visit our Knowledgebase at <http://kb.sandisk.com>.

1 Year Limited* Warranty

SanDisk Extreme Pro SDHC/SDXC UHS-I ExpressCard adapter is covered by this warranty for one (1) year from the date of purchase, subject to the applicable warranty terms and conditions, as defined in www.sandisk.com/wug.

* 1 year warranty in regions not recognizing limited

Disposal Instructions

Do not dispose of the SanDisk Extreme Pro SDHC/SDXC UHS-I ExpressCard adapter with unsorted waste. Improper disposal may be harmful to the environment and human health. Please refer to your local waste authority for information on return and collection systems in your area.

Overview

Thank you for choosing the SanDisk Extreme® Pro™ SDHC™/SDXC™ UHS-I ExpressCard® adapter. This adapter is an extremely fast reader for transferring data between high-speed SD™, SDHC™, or SDXC™ memory cards and Notebook/Desktop computers with an ExpressCard slot. This adapter can also be used with non high-speed standard memory cards.

Unlike most of the memory card readers and adapters commonly available in the market, this SanDisk Extreme Pro SDHC/SDXC UHS-I ExpressCard Adapter is operated under the PCI-Express interface. When this adapter is paired with the SanDisk Extreme Pro SDHC UHS-I memory card, the data transfer speed can reach up to 45MB/s*.

With the following features, this adapter is the perfect solution for users with a high-speed SanDisk Extreme Pro SDHC UHS-I memory card and looking for maximum capability, efficiency and data throughput:

Features

- Suitable for computers/laptops equipped with ExpressCard® 34 or ExpressCard® 54 slot
- Supports SD™, SDHC™ and SDXC™, UHS-I cards (according to SD Spec. Rev. 3.0)
- Provides high speed for SanDisk Extreme Pro SDHC UHS-I memory cards, data transfer speed (read / write) up to 45MB/s*
- Reliable and rugged stainless steel cover
- Power supply from ExpressCard socket with no external power required
- Power saving mode to reduce power consumption
- Support future new card specifications through driver upgrade

Minimum system requirements

- Mac OS® 10.4.11 or above
- Windows® XP, Windows Vista®, Windows® 7

Specifications

- Link interface : High Speed PCIe Spec. Rev. 1.0a (Data transfer rate up to 2.5Gbps)
- Memory card standard compliant: SD 3.0 specification (which includes SDXC & UHS-I)
- Dimensions: 75 x 34 x 5 mm (L x W x H)
- Weight: 16 g
- Operating Systems supported : Windows XP / Windows Vista / Windows 7, Mac OS 10.4.11 or above
- Operating power : +3.3 VDC (+/-5% wide range power supply)
- Environment support
 - Operating @ 0°C to 55°C (Temp.); 0 ~ 50% (RH)
 - Storage @ -20°C to 55°C (Temp.); 0 ~ 90% (RH)

**Based on SanDisk internal testing; performance may be lower depending upon host device. 1 megabyte (MB) = 1 million bytes.*

Driver Installation

Installing driver for Microsoft® Windows®

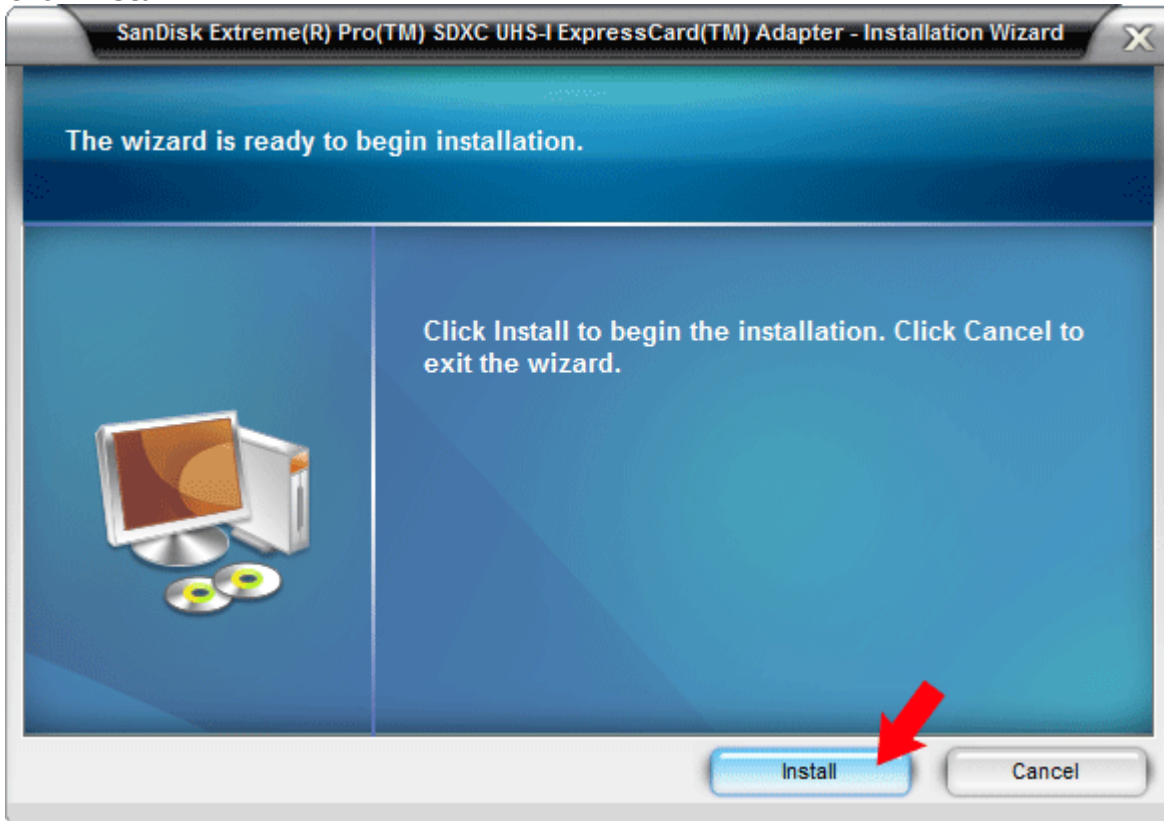
This section describes the procedures for installing the driver downloaded for this adapter for use under Windows® XP, Windows Vista® and Windows® 7 operating systems.

STEP 1 – Download the driver

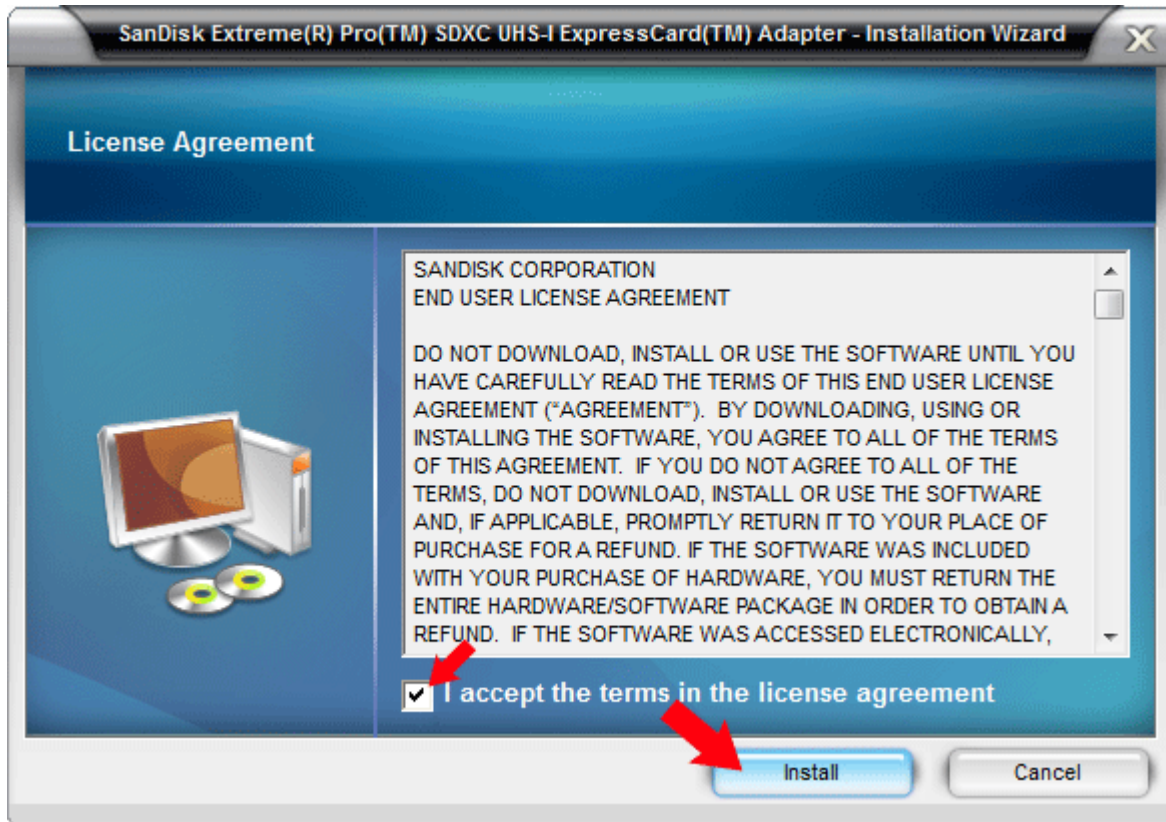
1. Click http://kb.sandisk.com/app/answers/detail/a_id/5780 and download the **PC driver**.
2. Save and extract the *.zip file on your PC desktop.

STEP 2 – Install the driver

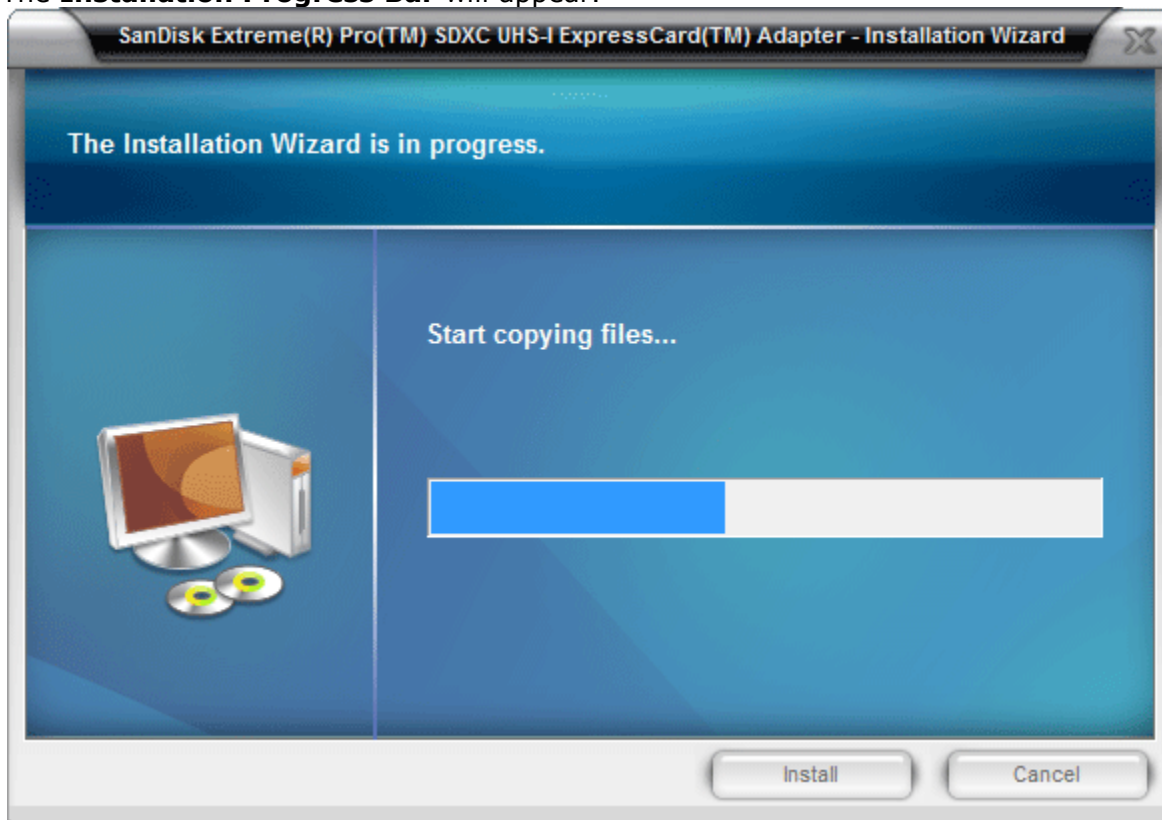
1. Plug the adapter into the ExpressCard® slot.
2. Insert an SD™ card into the SanDisk Extreme® Pro™ SDHC/SDXC UHS-I ExpressCard® adapter.
3. From your PC desktop, open the **Windows** folder.
4. Double-click on **setup.exe**.
5. Click **Install**.



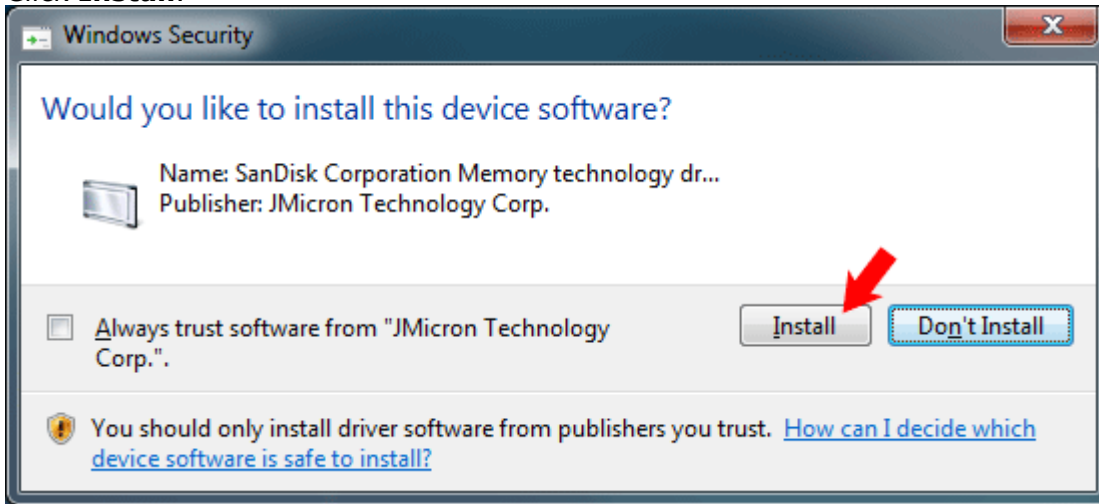
6. Read the **End User License Agreement**. Click the checkbox to select **I accept the terms in the license agreement**, then and click **Install**.



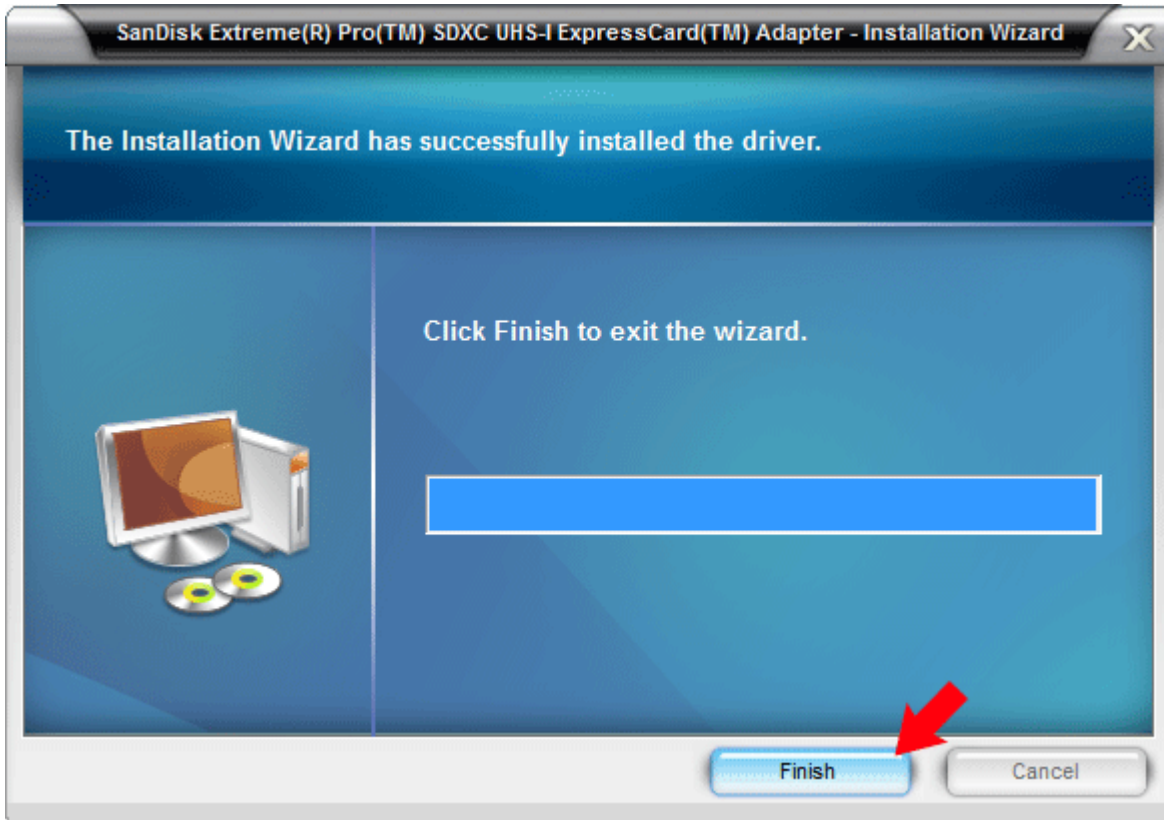
The **Installation Progress Bar** will appear.



7. Click **Install**.



8. Click **Finish**.



Installing driver for Mac OS®

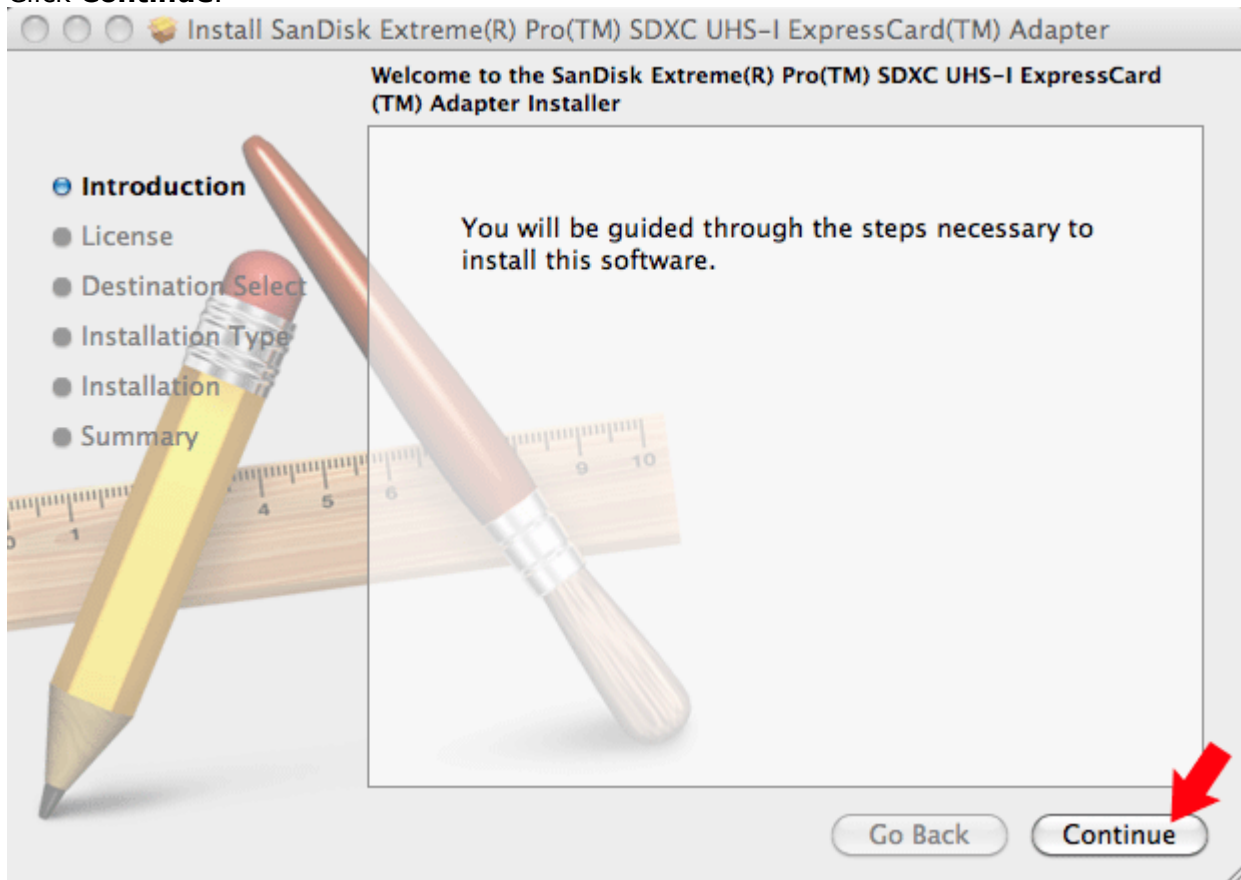
This section describes the procedures for installing the driver for this adapter for use under Mac OS® 10.4.11, 10.5x, and above operating systems.

STEP 1 – Download the driver

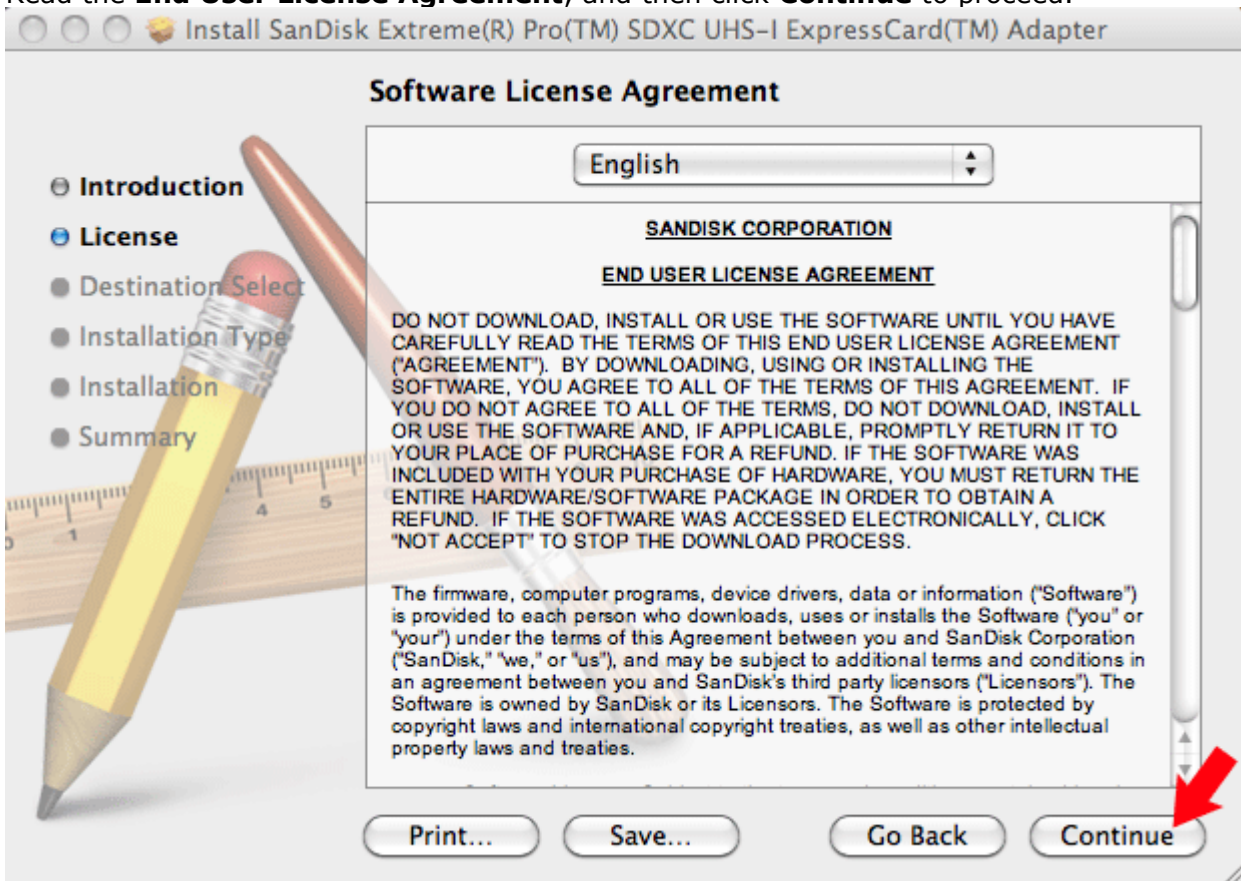
1. Click http://kb.sandisk.com/app/answers/detail/a_id/5780 and download the **Mac driver**.
2. Save the driver on your computer desktop.

STEP 2 – Install the driver

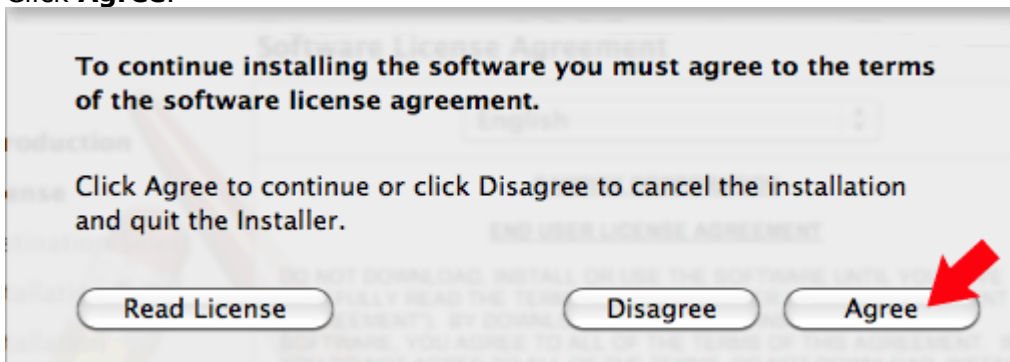
1. Insert an SD™ card into the SanDisk Extreme® Pro™ SDHC™/SDXC™ UHS-I ExpressCard® adapter.
2. Carefully plug the adapter into the ExpressCard slot on your computer.
3. Double-click on the **Mac** folder.
4. Double-click on **SanDisk_Driver.mpkg**.
5. Click **Continue**.



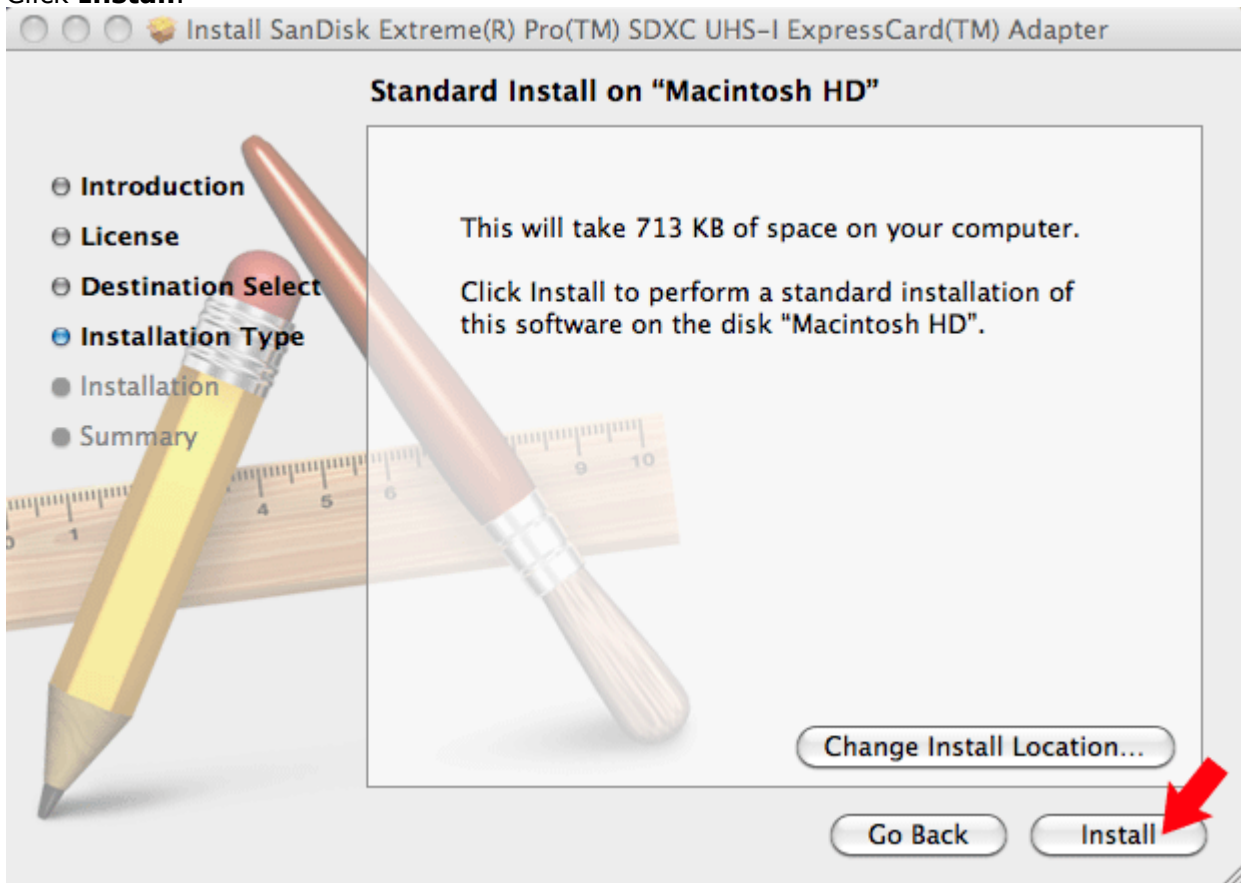
6. Read the **End User License Agreement**, and then click **Continue** to proceed.



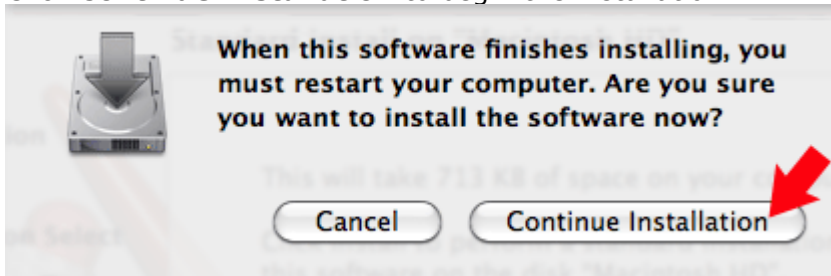
7. Click **Agree**.



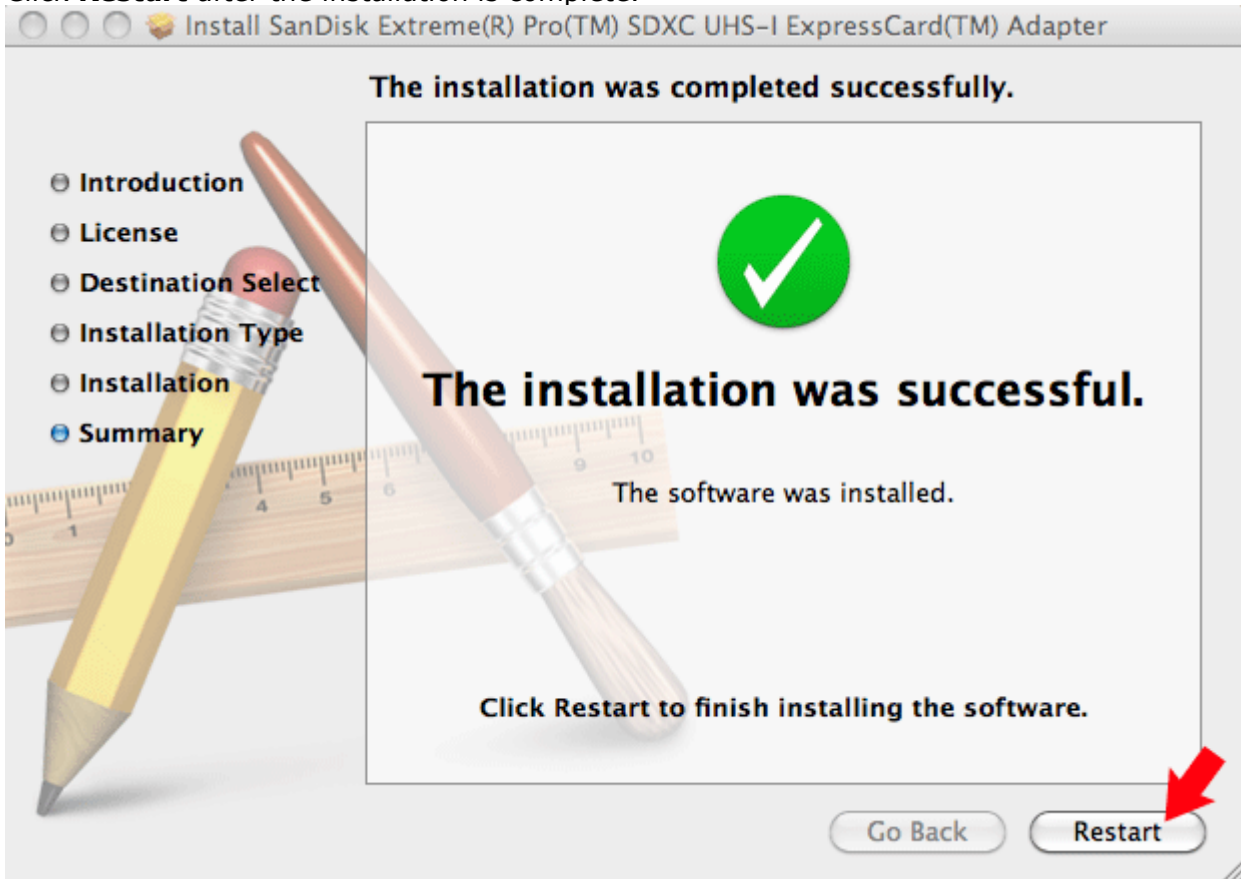
8. Click **Install**.



9. Click **Continue Installation** to begin the installation.



10. Click **Restart** after the installation is complete.



Using your SanDisk Extreme[®] Pro[™] SDHC[™]/SDXC[™] UHS-I ExpressCard[®] adapter

First-time Use

The SanDisk Extreme Pro SDHC/SDXC UHS-I ExpressCard adapter requires the installation of the driver downloaded from http://kb.sandisk.com/app/answers/detail/a_id/5780. Refer to the [Driver Installation](#) section for instructions on installing the driver prior to use of the adapter.

Transferring data to a memory card from a PC

1. Insert an SD[™] card into the SanDisk Extreme Pro SDHC/SDXC UHS-I ExpressCard adapter.
2. Plug the adapter into an ExpressCard slot.
3. Double-click on **My Computer**.
4. Locate the files or folders you want to transfer to the memory card.

NOTE: You can select multiple files by holding down the Ctrl while left click on the desired files. Or you can select all files by holding down Ctrl and press A.

5. On the keyboard, hold down the **Ctrl** key and press **C**.
6. Navigate to the desired folder in the **Removable Disk** associated with the SanDisk Extreme Pro SDHC/SDXC UHS-I ExpressCard adapter.
7. Hold down the **Ctrl** key and press **V**.

Transferring data to a memory card from a Mac

1. Insert an SD card into the SanDisk Extreme Pro SDHC/SDXC UHS-I ExpressCard adapter.
2. Plug the adapter into an ExpressCard slot.
3. Double-click on the drive associated with the SanDisk Extreme Pro SDHC/SDXC UHS-I ExpressCard adapter.
4. Select the **files** or **folders** you want to copy to the drive by clicking on them.

To select multiple files or folders, hold down the **APPLE** key while you click and select the **files** or **folders** you wish to save.

5. Drag and drop the selected **files** or **folders** to the flash drive icon.

NOTE: **Do NOT immediately remove your SD card from the ExpressCard slot.** Drag the drive icon to the **Trash Can** to safely remove it from the Mac. The Trash Can will change to the **Eject** Icon.

Removing the card

To remove the card on a PC or on a Macintosh:

1. Ensure no data is being transferred.
2. Remove the card from the SanDisk Extreme Pro SDHC/SDXC UHS-I ExpressCard adapter *or* remove the ExpressCard adapter from the computer.

Uninstalling the SanDisk Extreme® Pro™ SDHC™/SDXC™ UHS-I ExpressCard® adapter driver

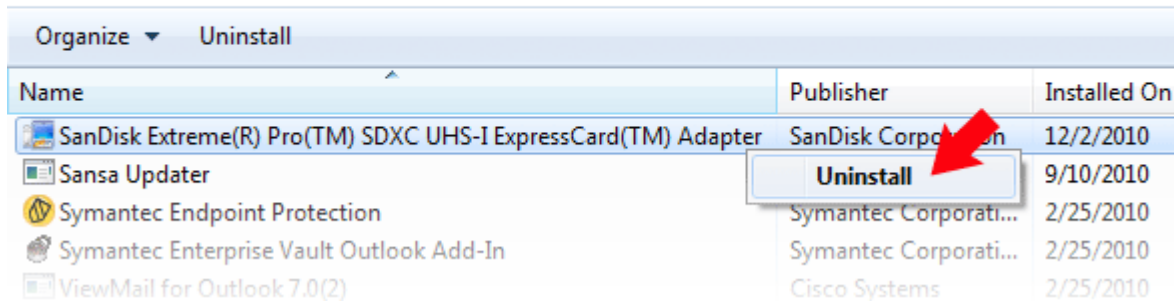
NOTE: Ensure that the SanDisk Extreme Pro SDHC/SDXC UHS-I ExpressCard adapter with a SD card inserted is plugged into the ExpressCard slot.

Uninstalling the driver for Microsoft® Windows®

1. On the PC's desktop, click **Start > Settings > Control Panel**.
2. Double-click **Programs and Features**.
3. Right-click on **SanDisk Extreme Pro SDHC/SDXC UHS-I ExpressCard Adapter** and select **Uninstall** (or Remove).

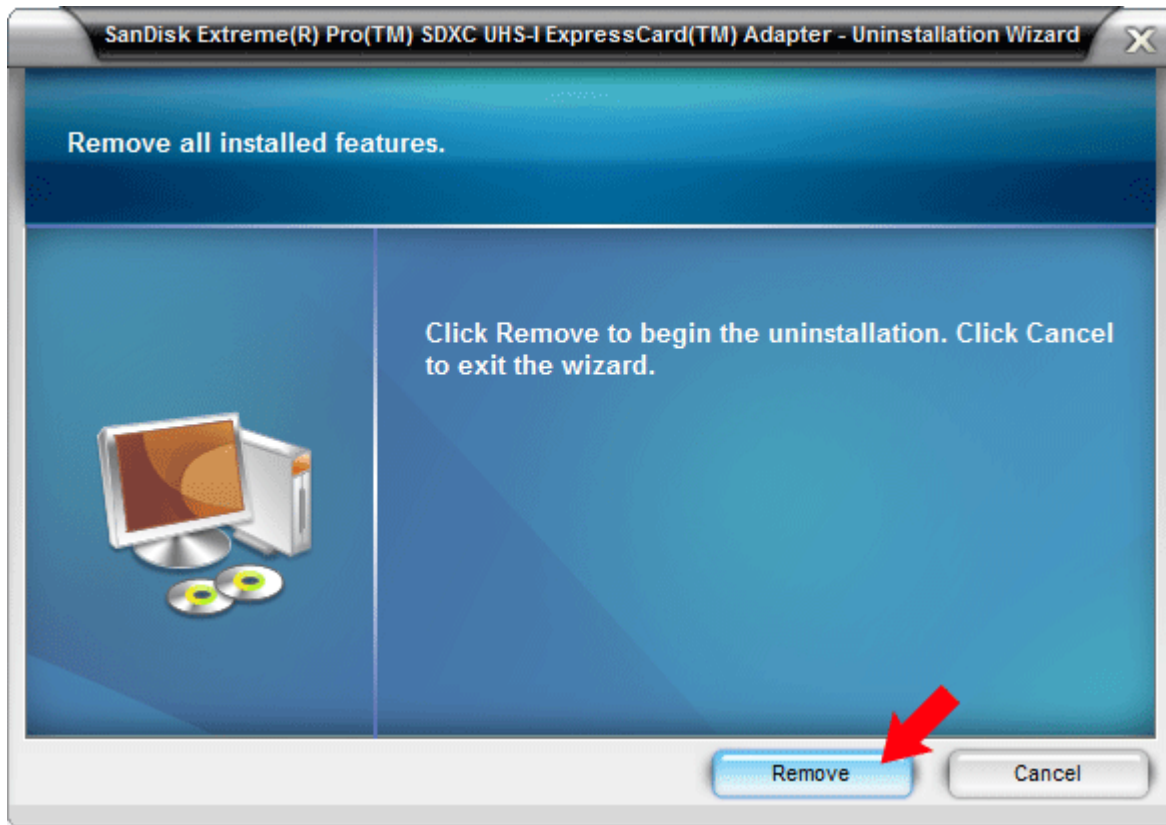
Uninstall or change a program

To uninstall a program, select it from the list and then click Uninstall, Change, or Repair.



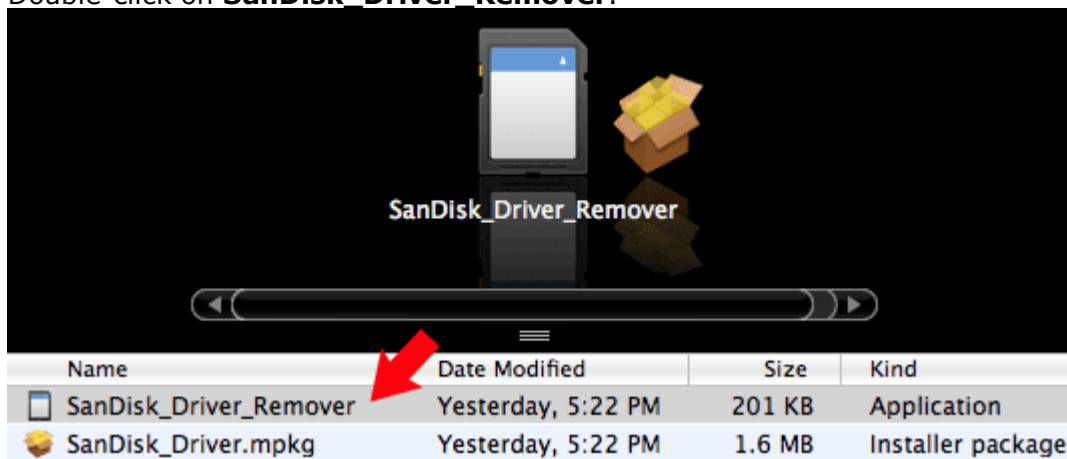
Name	Publisher	Installed On
SanDisk Extreme(R) Pro(TM) SDXC UHS-I ExpressCard(TM) Adapter	SanDisk Corporation	12/2/2010
Sansa Updater		9/10/2010
Symantec Endpoint Protection	Symantec Corporation	2/25/2010
Symantec Enterprise Vault Outlook Add-In	Symantec Corporation	2/25/2010
ViewMail for Outlook 7.0(2)	Cisco Systems	2/25/2010

4. Click **Remove**.



Uninstalling the driver for Mac OS®

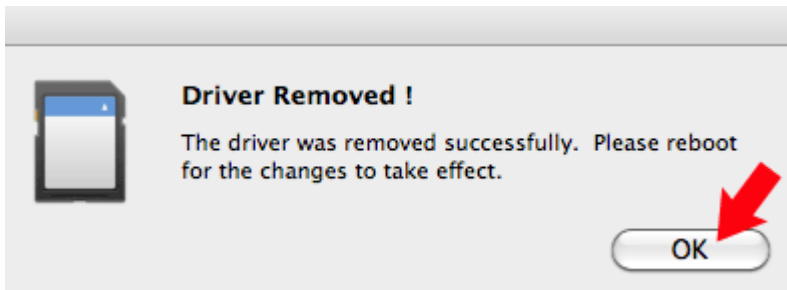
1. Double-click on the **Mac** folder.
2. Double-click on **SanDisk Driver Remover**.



3. Click **OK** to confirm.



4. Click **OK**, and then reboot your computer.



SanDisk, the SanDisk logo and SanDisk Extreme are trademarks of SanDisk Corporation, registered in the United States and other countries. SanDisk Extreme Pro is a trademark of SanDisk Corporation. SD, SDHC and SDXC are trademarks of SD-3C, LLC. ExpressCard is a trademark of PCMCIA. Other brand names mentioned herein are for identification purposes only and may be trademarks of their respective holder(s).

©2011 SanDisk Corporation. All rights reserved.

Free Manuals Download Website

<http://myh66.com>

<http://usermanuals.us>

<http://www.somanuals.com>

<http://www.4manuals.cc>

<http://www.manual-lib.com>

<http://www.404manual.com>

<http://www.luxmanual.com>

<http://aubethermostatmanual.com>

Golf course search by state

<http://golfingnear.com>

Email search by domain

<http://emailbydomain.com>

Auto manuals search

<http://auto.somanuals.com>

TV manuals search

<http://tv.somanuals.com>