

Dazzle

Hollywood DV-Bridge User's Guide

Dazzle*

An **SCM** Microsystems Brand

www.Dazzle.com

Copyright SCM Microsystems. All rights reserved. Trademarks are used for informational purposes, and remain the property of their owners.

Revision A

Table of Contents

Introduction

Congratulations!	4
What's Included	5
About This Guide	6
Hardware Overview.	7

Using the Hollywood DV-Bridge With a PC

Getting Started	10
Minimum System Requirements	10
Software Overview	11
Software Installation	12
Hardware Installation	16
Capturing Video	18
Connecting Analog Video Input	18
Connecting DV Input.	19
Connecting an Optional Preview Monitor.	20
Capturing Video	22
Editing Video	23
Creating DVDs, VCDs and S-VCDs	23
Outputting Video	24
Connecting Analog Video Output	24
Connecting DV Output	26
Connecting an Optional Preview Monitor.	27
Outputting Video	29

Using the Hollywood DV-Bridge With a Macintosh

Getting Started	30
Minimum System Requirements	30
Installation	31
Capturing Video	34
Connecting Analog Video Input	34
Connecting an Optional Preview Monitor.	36
Capturing Analog Video.	37
Editing Video	38
Connecting DV Input.	38
Outputting Video	39
Connecting Analog Video Output	39
Connecting an Optional Preview Monitor.	40
Outputting Analog Video	42
Connecting DV Output	42

Using the Hollywood DV-Bridge Without a Computer

Converting Analog Video to DV	43
Connecting Analog Video Input	43
Connecting DV Output	44
Connecting an Optional Preview Monitor.	45
Converting Analog to DV	47
Converting DV to Analog Video	48
Connecting DV Input.	48
Connecting Analog Video Output	49
Connecting an Optional Preview Monitor.	50
Converting DV to Analog	51
Copying Analog to Analog	52
Connecting Analog Video Input	52
Connecting Analog Video Output	53
Connecting an Optional Preview Monitor.	54
Copying Analog to Analog	55
Copying DV to DV	56
Connecting DV Input.	56
Connecting DV Output	56
Connecting an Optional Preview Monitor.	57
Copying DV to DV	59

Troubleshooting

Frequently Asked Questions	60
--------------------------------------	----

Technical Support

Dazzle Technical Resource Center	63
--	----

Introduction



Congratulations!

Now you can enjoy the benefits of editing in DV (Digital Video) format without the expense of a DV camcorder or deck. You can also convert your creations back to analog formats for sharing with people who do not have DV equipment. You can even convert material from one format to another without using a computer.

The DV Advantage

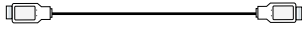
DV is an excellent format for capturing, editing and archiving video. It offers professional quality without the expensive and complicated computer equipment previously required for video editing.

Many editing programs can convert DV material to other formats for output to DVD, Video CD and Super Video CD, CD-ROM, E-mail and the web. Many people prefer to work in DV for quality and speed, then convert their finished projects to other formats.

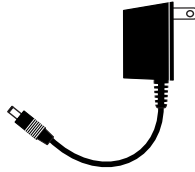
The Need for Analog

Despite the growing popularity of DV, many people already have analog equipment. In fact, sales of analog camcorders and VCRs are expected to remain strong for the next few years. The Hollywood DV-Bridge gives you the best of both worlds – the advantages of DV and the compatibility of analog.

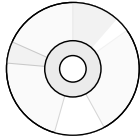
What's Included



6 pin to 6 pin 1394/FireWire/i.LINK cable



Power Adapter



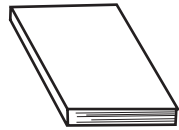
Software CD (PC only)



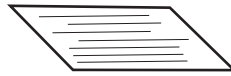
Stand



Hollywood DV-Bridge



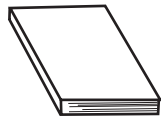
Hollywood Quickstart Guide



Registration Card



Warranty Card



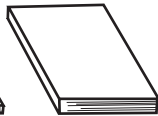
DVD Complete User's Guide



OnDVD User's Guide



Hollywood User's Guide



MovieStar User's Guide

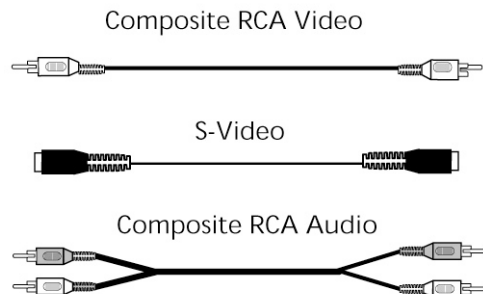


Technical Support Information Kit

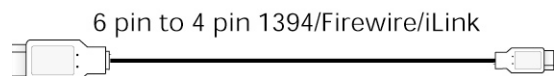
Note: Users' guides may be provided in either hard copy or as electronic files.

Other Items You Might Need

The following video input/output cables are not included with the Hollywood DV-Bridge. They are usually included with most camcorders and VCRs.



To connect most DV camcorders to the Hollywood DV-Bridge, you'll also need a 6 pin to 4 pin 1394/FireWire/i.LINK cable, which is usually included with the camcorder. There is a slight possibility that you might also need the same type of cable to connect the Hollywood DV-Bridge to your computer.



You'll need extra cables if you want to keep input and output devices connected to the Hollywood DV-Bridge at the same time for convenience.

You may need additional kinds of cables if you want to connect additional devices to those that are connected to the Hollywood DV-Bridge. For example, if you are outputting to a VCR, you may want to connect a TV monitor to the VCR to view your material. This requires the right kind of cable, which varies depending on the VCR and monitor. It may be necessary to use a coaxial video cable, which is usually included with VCRs.

To use the Hollywood DV-Bridge with an analog device that only supports mono audio, you also need a Y-adapter to enable connection of left and right audio cables to the Hollywood DV-Bridge. A Y-adapter cannot convert mono to stereo, but it prevents the sound from only being audible in the left or right channel.

These items are widely available in electronics stores.

About This Guide

This Guide explains how to use the Dazzle Hollywood DV-Bridge. It is divided into five main sections: "Using the Hollywood DV-Bridge With a PC," "Using the Hollywood DV-Bridge With a Macintosh," "Using the Hollywood DV-Bridge Without a Computer," "Troubleshooting," and "Technical Support."

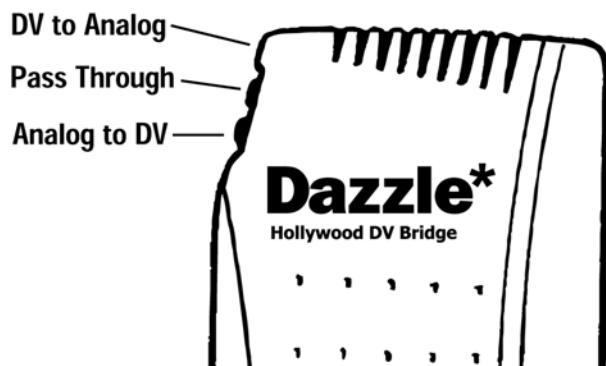
Hardware Overview

The Hollywood DV-Bridge is an attractive breakout box which includes input and output connectors, mode indicators and a mode selector button.



Mode Selection

The Hollywood DV-Bridge is a versatile product that allows you to convert analog video to DV, convert DV to analog, or to pass DV video directly through a computer (PC only). There are three mode indicator LEDs on the front of the Hollywood DV-Bridge to let you know which mode you are in.



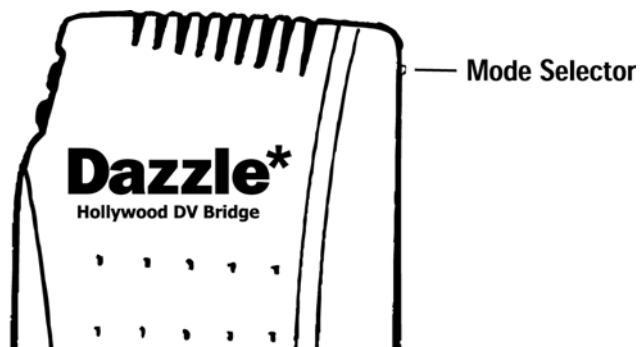
Following is a description of each mode:

DV to Analog: Converts DV video to analog. When in this mode, the top LED is lit.

Pass Through: Allows video to be passed directly through the Hollywood DV-Bridge, for example, when dubbing from one analog source to another without using a computer. When in this mode the center LED is lit.

Analog to DV: Converts analog video to DV. When in this mode, the bottom LED is lit.

When connected to a computer, the Hollywood DV-Bridge automatically activates the correct mode. For example, if you connect an analog camcorder to the Hollywood DV-Bridge RCA video input to capture video to the computer, the Hollywood DV-Bridge automatically activates Analog to DV mode. If you connect an analog VCR to the Hollywood DV-Bridge RCA video output and play back DV material from your editing software, the unit automatically activates DV to Analog mode. Occasionally, the Hollywood DV-Bridge may activate the wrong mode, for example, if input and output devices are connected and active at the same time. In such a case, simply use the Mode Selector button on the back of the unit to toggle through the available modes and select the right one.



Note: To convert video without a computer (as described in a separate section of this user's guide beginning on [page 43](#)), use the Mode Selector button to choose the proper conversion method.

LANC Device Control

The Hollywood DV-Bridge supports LANC (also known as control L), a feature which enables some analog camcorders and VCRs to receive commands from a computer. This means you can activate some functions (play, rewind, etc.) by clicking the appropriate buttons in MovieStar 5 instead of pressing the buttons on the camcorder or VCR manually. To use LANC with a supported device follow these steps:

- 1.** Plug one end of a LANC cable into the LANC connector on the Hollywood DV-Bridge.
- 2.** Plug the other end of the cable into the appropriate connector on your camcorder or VCR.

If a cable was not included with your device, we recommend checking with the manufacturer for recommendations on where to buy one.

- 3.** Follow any additional instructions provided in your device's documentation.

Note: LANC device control is generally not needed with digital camcorders and VCRs, because they have the ability to receive control commands via a 1394/FireWire/i.LINK connection.

Using the Hollywood DV-Bridge With a PC



Getting Started

Minimum System Requirements

Processor: 500 MHz or faster

Operating system: Windows® 98 SE, 2000, Me or XP

RAM: 128 MB minimum

Hard disk(s): 5400 RPM or faster; 150 MB disk space for software installation

Monitor: 1024 x 768 pixel resolution, 24 bit color, DirectX 8 or above

Sound: Standard sound card

DV interface: OHCI-compliant 1394 card or port with the appropriate driver(s) installed and functioning properly

Note: Most affordable 1394 cards, including Dazzle DV-Editor PCI cards, are compliant. Please check with the manufacturer if you have any doubt.

CD-ROM or DVD-ROM Drive: For software installation

CD burner: For Video CD, Super Video CD or cDVD creation

DVD burner (any format): For DVD creation

Additional Requirements

To fine-tune your system for DV editing, follow these steps:

1. Make sure all your hard disk drives are defragmented.
2. If possible, use a separate drive for storing video material.
3. Close all unnecessary programs and background tasks.

Software Overview

The Hollywood DV-Bridge includes three Dazzle PC software applications: MovieStar 5, DVD Complete, and OnDVD. Following is a description of each of these software applications.

MovieStar 5

MovieStar 5 makes editing your video easy, but it doesn't leave out the powerful features you want. Cut unwanted scenes and add 3D transitions, titles, and special effects. Add your favorite background music to set the mood or do a voice-over narration to explain important scenes. Use the storyboard or timeline interface for easy, yet professional video editing. MovieStar 5 has Background Rendering, Smart Rendering and Fast Rendering technology for superior speed and performance. MovieStar 5 lets you make Real Media or Windows Media internet-ready streaming videos. Then upload them for free to the Dazzle Webcasting site to share streaming video across the internet. For instructions on editing video, refer to your *MovieStar 5 User's Guide*.

DVD Complete

With DVD Complete, it's easy to make DVDs like those created in Hollywood movie studios. The DVD Complete project wizard guides you through five simple steps from camcorder to DVD. All you need to know is what you like and DVD Complete does the rest. For instructions on making DVDs, refer to your *DVD Complete User's Guide*.

OnDVD

Digital cameras allow you to take an unlimited number of photographs that quickly pile up on your computer and become difficult to manage. With OnDVD, you can take digital pictures and turn them into photo albums for your DVD player. Simply select and arrange your photos like an old-fashioned Slideshow and burn a CD. OnDVD makes it easy to turn digital memories into home entertainment! For instructions on creating Slideshows, refer to your *OnDVD User's Guide*.

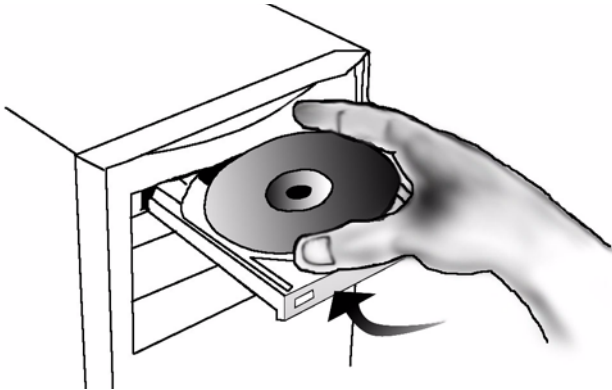
Note: You can access an electronic user guide for any of the above Dazzle software applications by selecting Start>Programs, selecting the name of the desired product, and then selecting the user guide for that product.

Software Installation

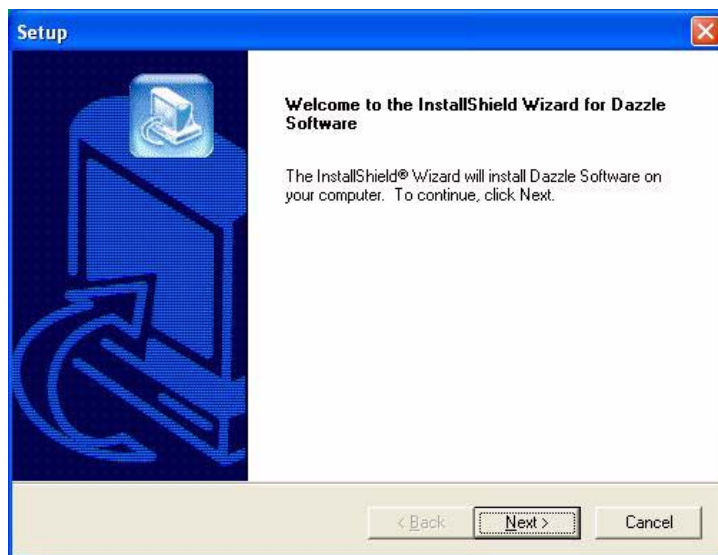
Since the Hollywood DV-Bridge uses drivers that are built into Windows, the provided CD does not contain drivers.

To install the software applications included with the Hollywood DV-Bridge, follow these steps:

1. Insert the provided Hollywood DV-Bridge Installation CD in your computer's CD-ROM/DVD-ROM drive.

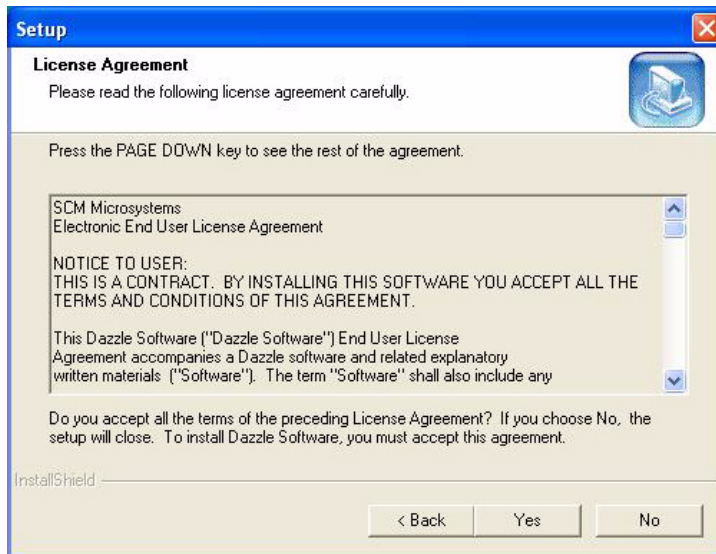


The InstallShield Wizard Welcome screen appears.



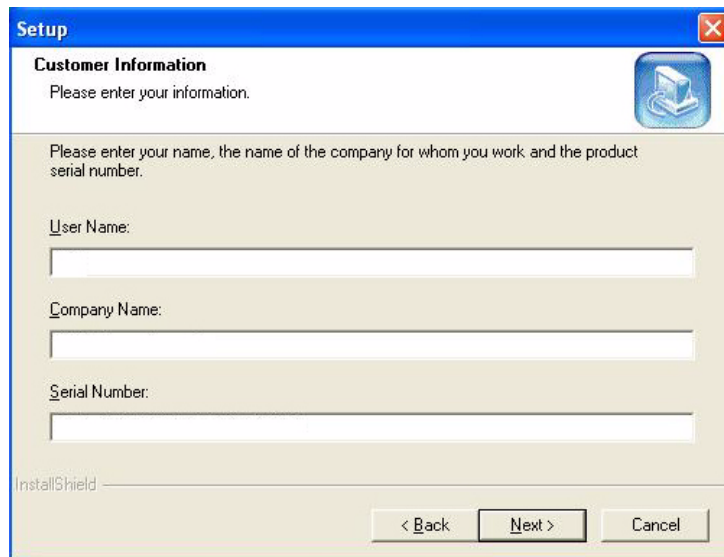
2. Click Next.

The License Agreement screen appears. To use the Hollywood DV-Bridge, you must agree to the terms of the license.



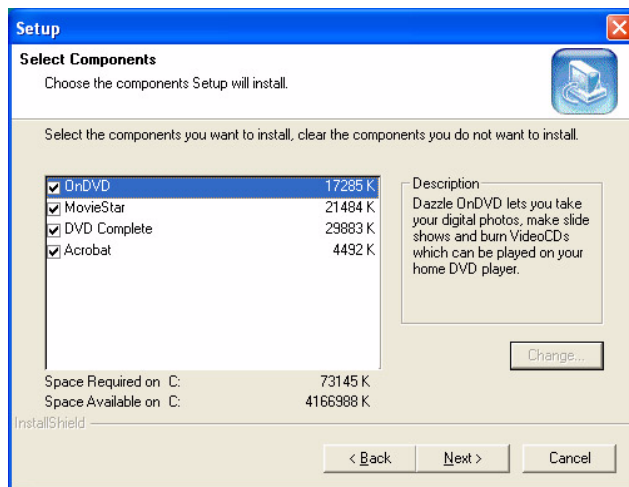
3. Click Yes to accept the license agreement.

The Customer Information screen appears.



4. Enter your name, company name, and serial number, then click **Next**.

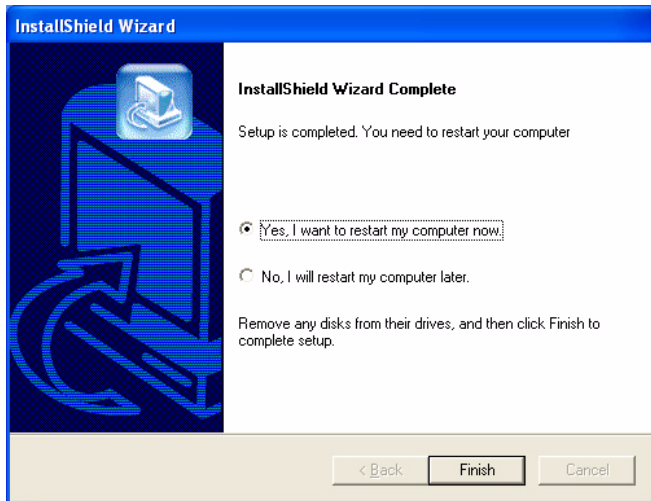
The Select Components screen appears. This screen allows you to select the software applications you want to install. **Dazzle strongly recommends installing all the software applications.** MovieStar is required for video capture and playback. DVD Complete is required to design and burn DVDs. OnDVD is required to create Slideshows. Acrobat is required to read the online Help files and electronic users' guides.



5. Select the desired software applications and click **Next**.

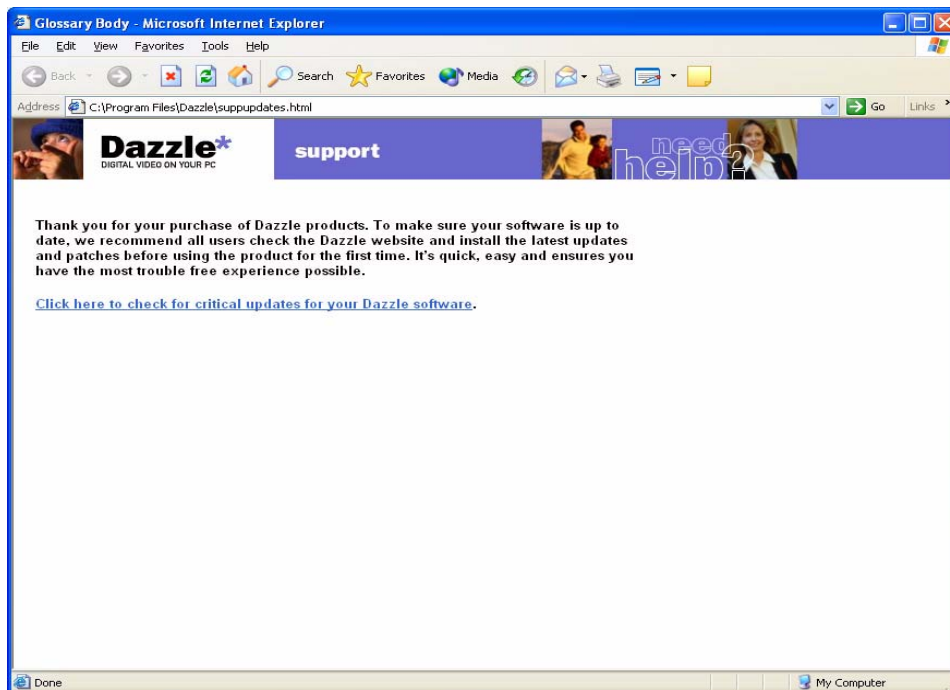
The InstallShield Wizard installs the specified drivers and applications, and then the Acrobat Reader 5 installer appears.

After installing all the software, the InstallShield Wizard confirms a successful installation.



6. Click **Finish** to restart your computer and complete the installation.

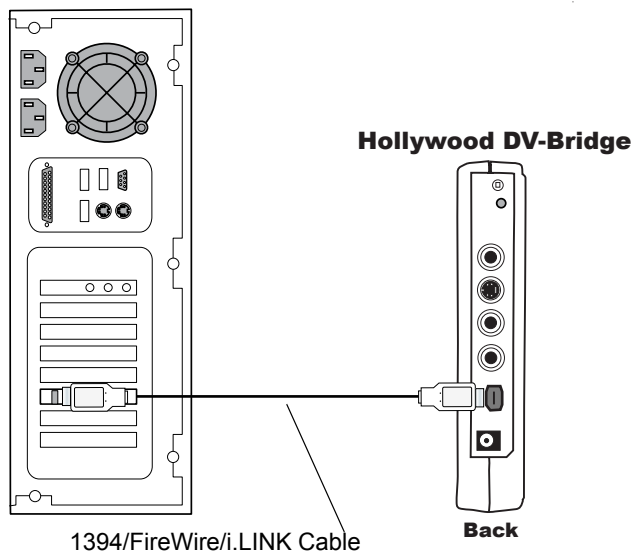
After restarting your computer, a browser window appears with a message that reminds you to check the Dazzle website for the latest updates and patches. Just click on the link in the browser window to check for any critical updates to your software.



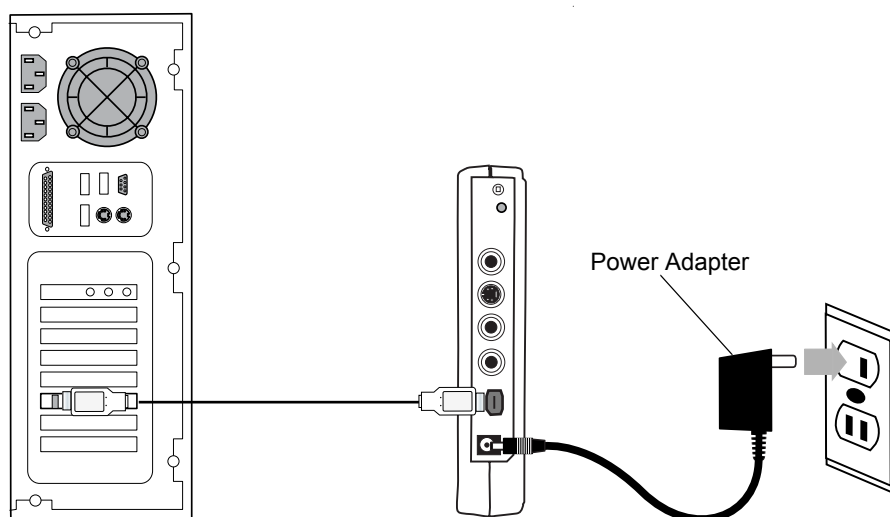
Hardware Installation

After you install the Dazzle software applications included with the Hollywood DV-Bridge, you can install the hardware. Installing the Hollywood DV-Bridge hardware is an easy, two step process, as described below

1. Connect the 1394/FireWire/i.LINK cable from the back of the Hollywood DV-Bridge to an available 1394 port on your computer.



2. Connect one end of the AC power cord to the back of the Hollywood DV-Bridge, and the other end to an electrical outlet.



Note: The Hollywood DV-Bridge utilizes DV drivers that are built into your operating system. Once the unit is connected to your computer and powered on, the PC should recognize it and load the appropriate drivers automatically. You can verify whether the Hollywood DV-Bridge is installed properly by checking the Windows Device Manager. The unit should appear under the “Imaging Device” category as a “Microsoft DV Camera and VCR,” “Generic DV Camera and VCR” or similarly-named device. Windows may also add additional entries to the Device Manager when the Hollywood DV-Bridge is connected. This is normal. If the Hollywood DV-Bridge does not appear in the “Imaging Device” category, double-check the 1394 connection, disconnect power and reconnect power. If this does not work, check your hardware’s documentation to see if a third-party DV camcorder driver is installed, and whether instructions are provided on how to remove the driver.

For detailed information on the Device Manager, please refer to your Windows Help documentation.

For up-to-date driver troubleshooting information, go to the Interactive Knowledge area of Dazzle’s website, as described on [page 63](#), later in this guide.

Capturing Video

This section explains how to capture video from an analog or DV source, such as a camcorder, VCR, or TV. You'll learn how to set up the Hollywood DV-Bridge for DV or analog video input and convert analog video to DV for use on your computer. After the capture process, you can edit the video and create special effects on your computer. Before you start capturing, make sure the Hollywood DV-Bridge is connected to your computer and powered up. Then follow the procedures below.

Connecting Analog Video Input

Much of the video recorded on tape until now has been in the analog format. Most camcorders and VCRs in use today record in analog. This format has proven to be a very convenient and cost-effective way to record and share video, but the video world is quickly converting to the DV format.

With the Hollywood DV-Bridge, you can convert your old VHS (and even Beta) tapes and analog camcorder videos to high-quality DV. Since DV is the future of video, you can be sure that your converted material will be around in a convenient, high-quality format for a long time to come. Also, archiving your video in DV is best since it allows for unlimited copying of the video without quality loss from generation to generation.

- 1.** Connect one end of an RCA (composite) video cable (yellow) or S-video cable (black) to the corresponding Video Out connector on an analog camcorder, VCR, or TV.

S-Video provides higher quality video capture than composite video, and should be used if the analog device has an S-Video output.

Note: Some TVs do not have Video Out connectors. For specific details, check the documentation included with your TV.

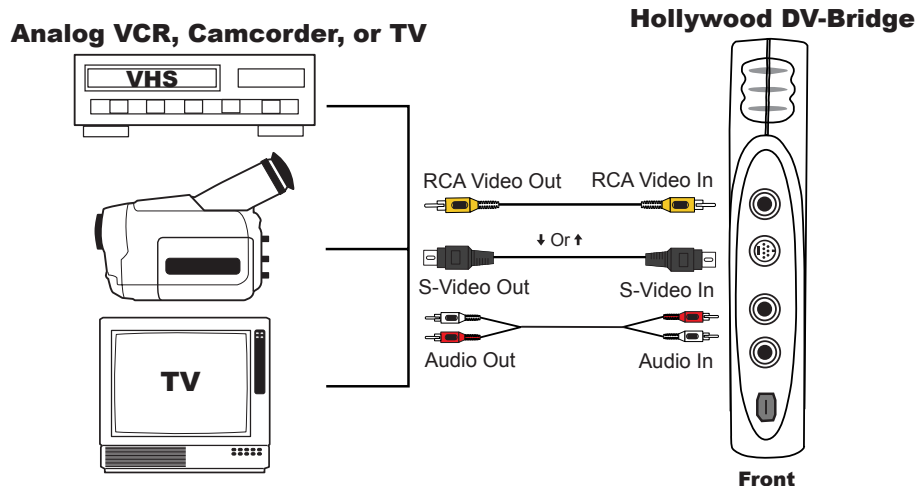
- 2.** Connect the other end of the video cable to the corresponding Video In connector on the front of the Hollywood DV-Bridge.

Note: Some camcorders do not have connectors for standard video cables. If your camcorder is not compatible with standard video cables, use the cables that were included with the camcorder.

- 3.** Connect an RCA audio cable (red and white) from the Audio Out connectors on the analog camcorder, VCR, or TV to the Audio In connectors on the front of the Hollywood DV-Bridge.

Note: Your audio cable may have separate connectors for left and right, or the connectors might be joined as shown in the illustration below. Remember that you need to use a Y-adaptor if the analog camcorder or VCR only supports mono output.

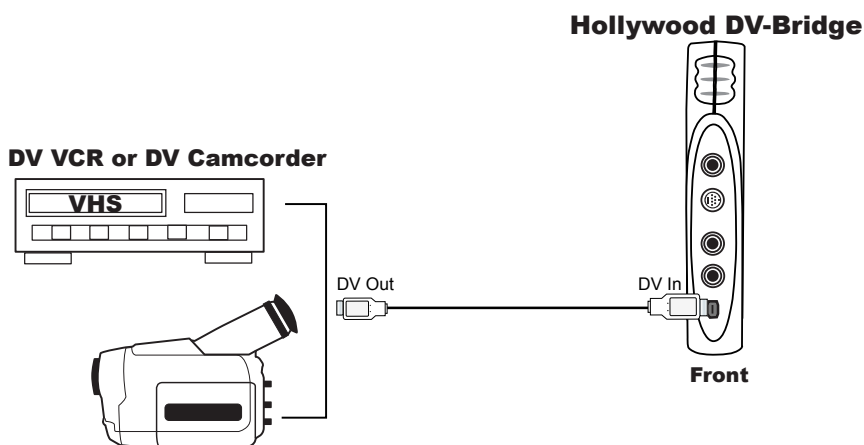
The illustration on the next page shows the above configuration.



Connecting DV Input

If you have a DV camcorder or VCR, there may be times when you want to capture the DV material directly into your computer, then edit in DV format and output the edited video back to your DV device. Since no conversion is performed, it is not necessary to use the Hollywood DV-Bridge for this process. You can accomplish this mode by simply connecting your DV device directly to your PC. However, it might be more convenient to capture and output through the Hollywood DV-Bridge. If your computer is not in a convenient location, it may be easier to simply connect the DV device to the Hollywood DV-Bridge as follows:

1. Connect one end of a 1394/FireWire/i.LINK cable to the 1394 connector on the front of the Hollywood DV-Bridge.
2. Connect the other end of the cable to the DV connector on the DV camcorder or VCR.



Connecting an Optional Preview Monitor

Although you can preview your video in MovieStar 5, you may prefer to view it at full size on a TV monitor. There are two ways to connect a preview monitor.

Method A: During the analog or DV capture process, if the Hollywood DV-Bridge is not connected for video output to an analog device, connect the TV monitor as follows.

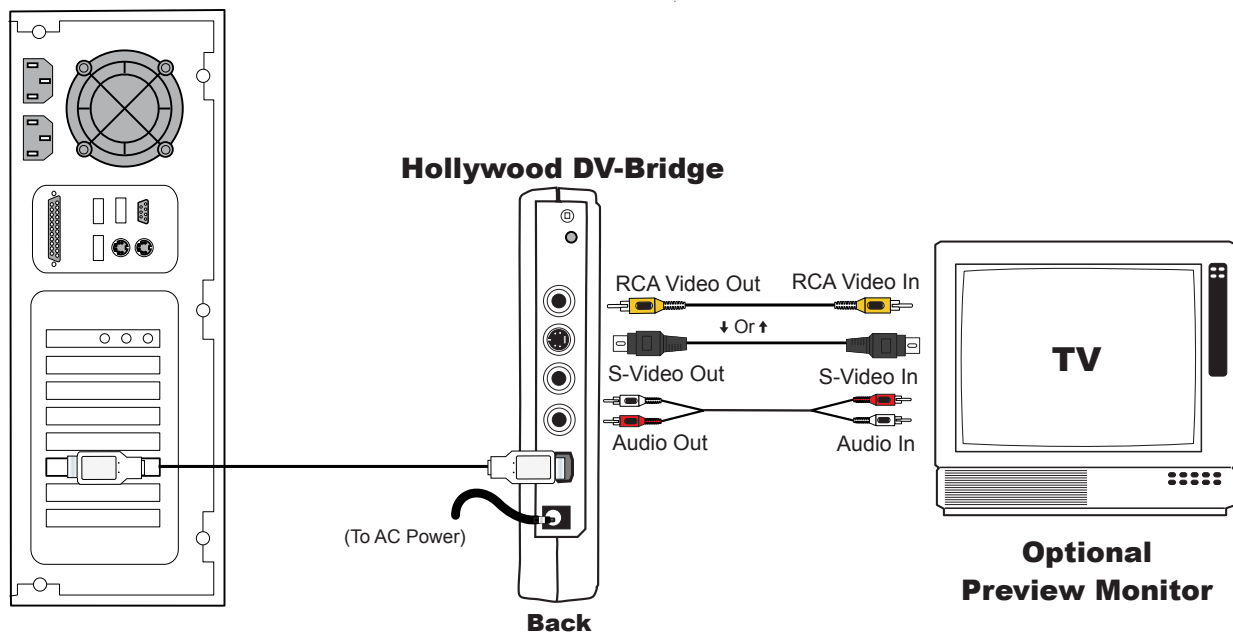
1. Connect one end of an RCA video cable (yellow) or S-video cable (black) to the corresponding Video Out connector on the back of the Hollywood DV-Bridge.
2. Connect the other end of the video cable to the corresponding Video In connector on your TV monitor.

Note: Some older model TVs may not have Video In connectors. For specific details, check the documentation included with your TV.

3. Connect an RCA audio cable (red and white) from the Audio Out connectors on the back of the Hollywood DV-Bridge to the Audio In connectors on the TV monitor.

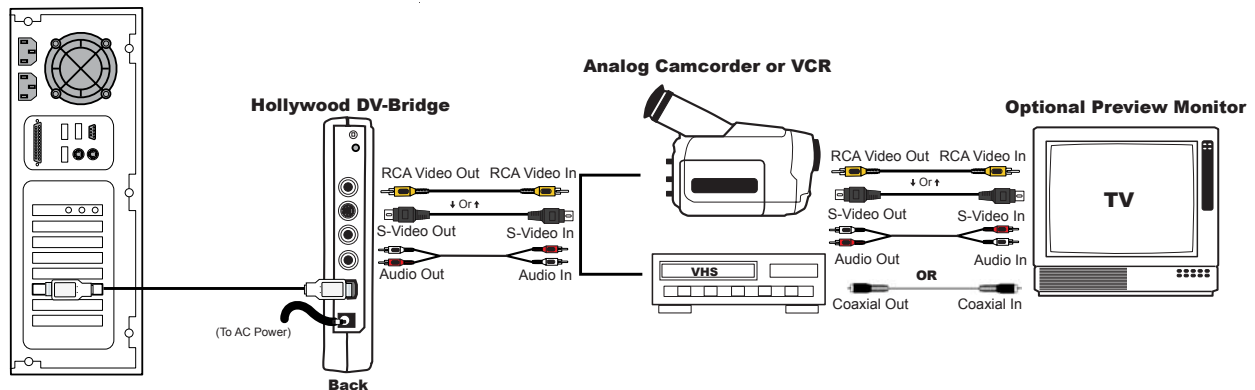
Note: Your audio cable may have separate connectors for left and right, or the connectors might be joined as shown in the illustration below. Remember that you need to use a Y-adapter if the monitor only supports mono input.

IMPORTANT: Make sure that the monitor is set up properly to receive a video signal. It may need to be set to "Line In," "L1," "L2," "Aux" or a similar channel. Check the monitor's documentation for specific details.



Method B: During the capture process, if the Hollywood DV-Bridge is connected for video output to an analog device, connect the TV monitor to the analog device. This process is explained later in this user's guide, in the "Outputting Video" section. This method may be helpful if your TV monitor does not have the kinds of video and audio connectors described above. You may be able to connect the monitor to an analog output device such as a VCR by using a coaxial cable.

Method B results in the configuration shown below.



IMPORTANT: Make sure that the camcorder or VCR and TV monitor are set up properly to receive a video signal. It may be necessary to set a camcorder to VTR mode, while a VCR or monitor might need to be set to "Line In," "L1," "L2," "Aux" or a similar channel. Or, if the monitor is connected to a VCR with a coaxial cable, you may need to set the monitor to channel 3 or 4. Check each device's documentation for specific details.

Capturing Video

To capture DV or analog video to your computer's hard disk, follow the steps below (for more detailed instructions on capturing video, see your *MovieStar 5 User's Guide*).

Note: It is important not to launch MovieStar 5 before all the hardware devices are connected!

1. Launch MovieStar 5.

The Project Profile dialog box appears. In this window, you can choose the type of project you want to create, for example, making a DVD. Choosing the project profile at this point speeds the video editing process, but you can always change your mind and choose a different profile later. If you want to create an analog video tape, choose **DVD** for your project profile. For a DV video tape, choose **DV**. In this window, you can also select a broadcast standard (NTSC or PAL).



2. Choose a project profile, then click **OK**.
3. Click the **Capture** button to display the Capture window.
4. Enter a name for your file, then select a file destination.
5. Select **Hollywood DV-Bridge** as the video device.

If you are using a camcorder and capturing from a previously recorded tape, set the camcorder to Video Tape Recorder mode. If you want to capture live video from the camcorder, set it to Camera mode. For analog video captures, the Hollywood DV-Bridge converts the analog video to DV. For DV captures, the DV video passes through the Hollywood DV-Bridge. After the capture operation, the video is stored on your computer's hard disk.

6. Specify whether you want to capture from the Composite (RCA), S-Video, or 1394 input.
7. Go to the point on the tape where you want to begin capturing.

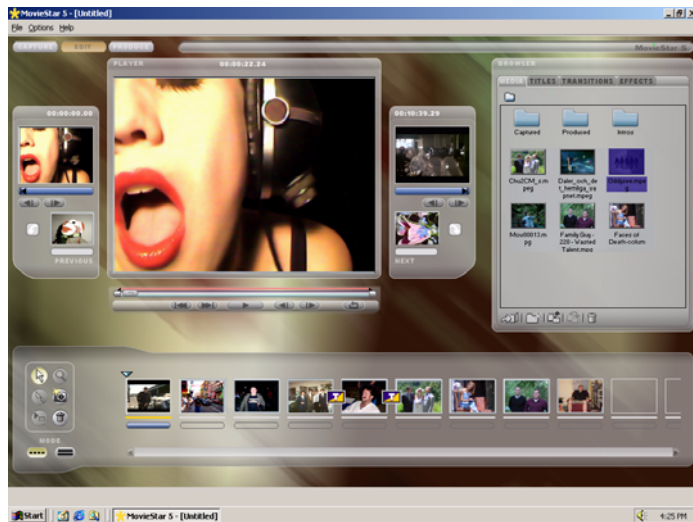
The video image appears in the Player window in MovieStar 5.

8. Click the red **Record** button in MovieStar 5.
9. Click the **Stop** button in MovieStar 5 when you want to end the video capture.

Editing Video

Now that you've captured your video, you can edit it. Cut out unwanted scenes, splice together different clips and add Hollywood-style special effects like titles, transitions, voiceovers and background music.

For detailed information on editing video, see your *MovieStar 5 User's Guide*.



Creating DVDs, VCDs and S-VCDs

For instructions on creating DVDs, VCDs, S-VCDs, and Webcasting, see the supplied MovieStar 5, DVD Complete, and OnDVD users' guides.

Outputting Video

This section explains how to output your edited video to a DV or analog camcorder or VCR, so you can create customized video tapes. You'll learn how to set up the Hollywood DV-Bridge for DV or analog video output and convert DV to analog video. Before you start outputting, make sure that the Hollywood DV-Bridge is connected to your computer and powered up. Then follow the procedures below.

Connecting Analog Video Output

Even though the DV format is growing quickly, for now the majority of people do not have DV devices. This means that it might not be practical to share DV video with family, friends and business associates. Even after you edit video in the fast, high-quality DV format, you can use the Hollywood DV-Bridge to convert your creations to analog. This allows you to easily create videotapes for people with analog VCRs.

Note: If you have an optional preview monitor connected, you must disconnect it to attach the analog camcorder or VCR that you want to record to. However, you may be able to connect it to the output device as described later in this section.

- 1.** Connect one end of an RCA (composite) video cable (yellow) or S-video cable (black) to the corresponding Video Out connector on the back of the Hollywood DV-Bridge.

Note: S-Video provides higher quality video capture than composite video and should be used if your camcorder or VCR has an S-Video connection.

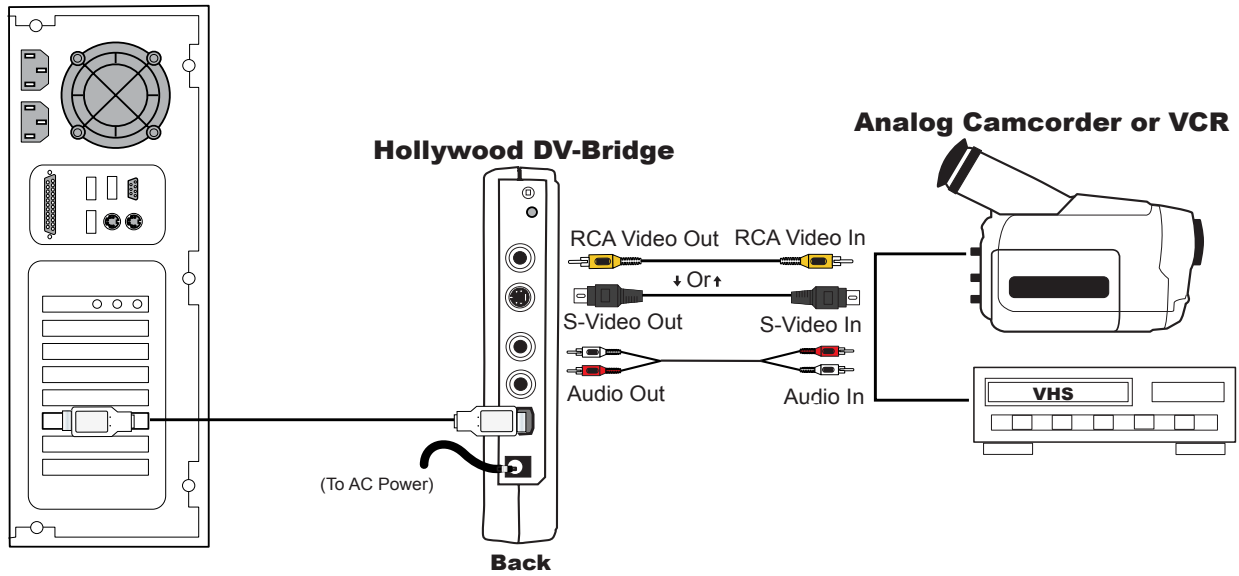
- 2.** Connect the other end of the video cable to the corresponding Video In connector on the camcorder or VCR.

Note: Some analog camcorders do not have inputs. Consult your camcorder's documentation for details on your specific model.

- 3.** Connect an RCA audio cable (red and white) from the Audio Out connectors on the back of the Hollywood DV-Bridge to the Audio In connector(s) on the analog camcorder or VCR.

Note: Your audio cable may have separate connectors for left and right, or the connectors might be joined as shown in the illustration below. Remember that you need to use a Y-adaptor if the analog camcorder or VCR only supports mono input.

The illustration on the next page shows the above configuration.



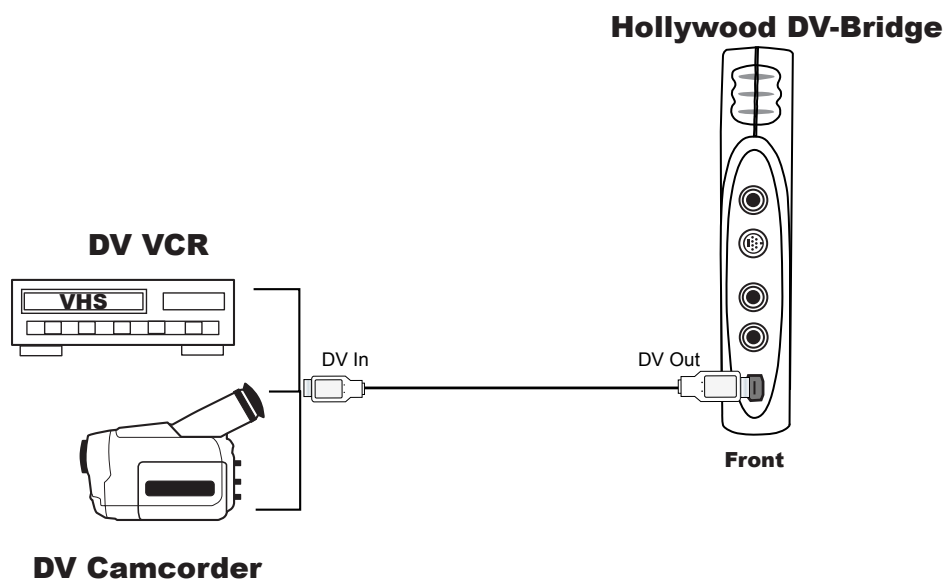
IMPORTANT: Make sure that the camcorder or VCR is set up properly to receive a video signal. It might be necessary to set a camcorder to VTR mode, while a VCR might need to be set to "Line In," "L1," "L2," "Aux" or a similar channel. Check the camcorder or VCR's documentation for specific details.

Connecting DV Output

If you have a DV camcorder or VCR, there may be times when you want to output DV from your computer to the digital camcorder or VCR. Since no conversion is performed, it is not necessary to use the Hollywood DV-Bridge for this process. You can accomplish this mode by simply connecting your DV device directly to your PC. However, it might be more convenient to capture and output through the Hollywood DV-Bridge. If your computer is in an out-of-the-way location, you may find it easier to simply connect the DV device to the Hollywood DV-Bridge as follows:

1. Connect one end of a 1394/FireWire/i.LINK cable to the 1394 connector on the front of the Hollywood DV-Bridge.
2. Connect the other end of the cable to the DV connector on the DV camcorder or VCR.

Note: This is the same setup used for capturing DV. If you have already made the connection for capturing, it is not necessary to change it. In this case, the 1394 cable handles input and output.



Connecting an Optional Preview Monitor

Analog or DV Output Configurations

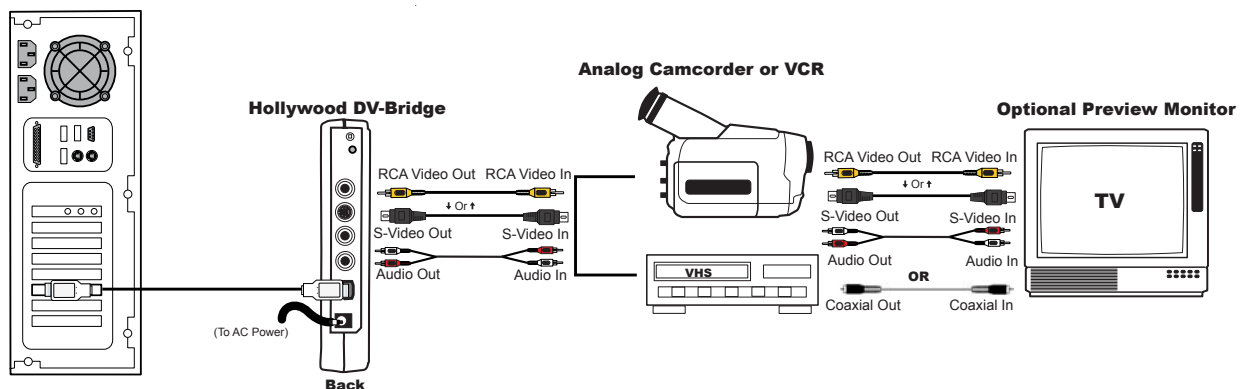
During analog output or DV output (with an analog output device connected), if the connectors on your camcorder or VCR and your monitor are compatible, you can connect a preview monitor as follows:

1. Connect one end of an RCA (composite) video cable (yellow) or S-Video cable (black) to the Video Out connector on the camcorder or VCR.
2. Connect the other end of the cable to the Video In connector on the TV monitor.
3. Connect an RCA audio cable (red and white) from the Audio Out connectors on the back of camcorder or VCR to the Audio In connectors on the monitor.

Note: Your audio cable may have separate connectors for left and right, or the connectors might be joined as shown in the illustration below. Remember that you need to use a Y-adaptor if your monitor only supports mono input.

If the TV monitor does not support the kinds of cables shown below, you may be able to connect it using a coaxial cable. Many VCRs and most TVs have this kind of connector, and many VCRs come with a coaxial cable.

Connecting the TV monitor to the camcorder or VCR results in the configuration shown below



IMPORTANT: Make sure that the camcorder or VCR and monitor are set up properly to receive a video signal. It might be necessary to set a camcorder to VTR mode, while a VCR or monitor might need to be set to "Line In," "L1," "L2," "Aux" or a similar channel. Or, if a monitor is connected to a VCR with a coaxial cable, you might need to set the monitor to channel 3 or 4. Check each device's documentation for specific details.

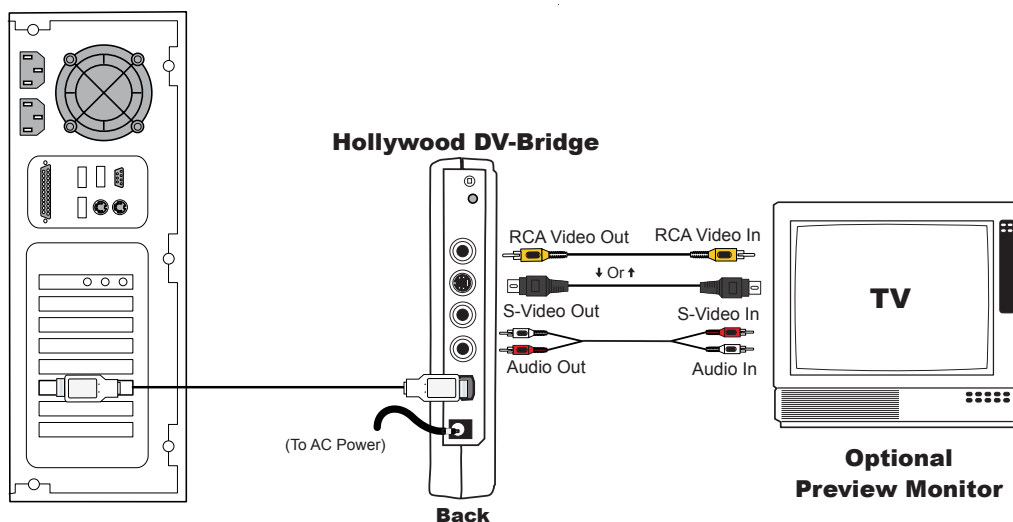
DV Output Configurations

When outputting DV, there are two additional methods for connecting a preview monitor.

Method A: If the Hollywood DV-Bridge is not connected for video output to an analog device, connect the TV monitor as follows.

1. Connect an RCA video cable (yellow) or S-Video cable (black) from the Video Out connector on the back of the Hollywood DV-Bridge to the Video In connector on the TV monitor.
2. Connect an RCA audio cable (red and white) from the Audio Out connector on the back of the Hollywood DV-Bridge to the Audio In connector on the monitor.

Note: Your audio cable may have separate connectors for left and right, or the connectors might be joined as shown in the illustration below. Remember that you will need to use a Y-adaptor if the monitor only supports mono input.

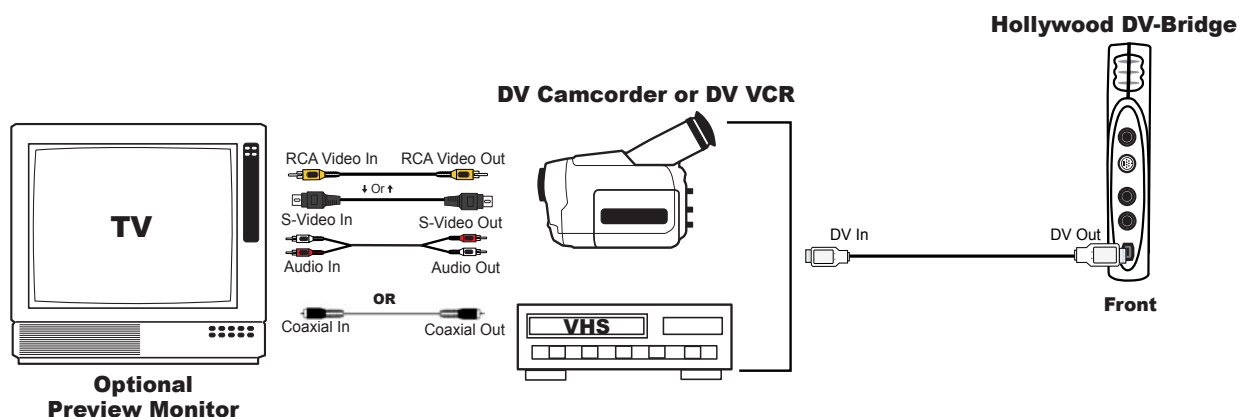


IMPORTANT: Make sure that the monitor is set up properly to receive a video signal. It might need to be set to "Line In," "L1," "L2," "Aux" or a similar channel. Check the monitor's documentation for specific details.

Method B: Connect the monitor to the DV camcorder or VCR as follows:

1. Connect an RCA video cable (yellow) or S-Video cable (black) from the Video Out connector on the camcorder or VCR to the Video In connector on the TV monitor.
2. Connect an RCA cable (red and white) from the Audio Out connector on the back of camcorder or VCR to the Audio In connector on the monitor.

Note: Your audio cable may have separate connectors for left and right, or the connectors might be joined as shown in the illustration below. Remember that you will need to use a Y-adaptor if the monitor only supports mono input.



If the TV monitor does not support the kinds of cables shown above, you might be able to connect it using a coaxial cable. Many VCRs and most TVs have this kind of connector, and many VCRs come with a coaxial cable.

IMPORTANT: Make sure that the camcorder or VCR and monitor are set up properly to receive a video signal. It might be necessary to set a camcorder to VTR mode, while a VCR or monitor might need to be set to "Line In," "L1," "L2," "Aux" or a similar channel. Or, if a monitor is connected to a VCR with a coaxial cable, you might need to set the monitor to channel 3 or 4. Check each device's documentation for specific details.

Outputting Video

For instructions on outputting your DV or analog video to a camcorder or VCR, see your *MovieStar 5 User's Guide*.

Using the Hollywood DV-Bridge With a Macintosh



Getting Started

Minimum System Requirements

The system requirements will vary depending on the editing software you are using. The following minimum requirements should be met for DV editing in general.

Processor: 300 MHz or faster

Operating system: Mac OS 9.0.4, including OS X (Note that OS X does not support 1394 when running applications in Classic mode, so OS X support is currently limited to OS X native programs.)

RAM: 64 MB minimum, at least 128 MB recommended

Monitor: 800 x 600 pixel resolution

Sound: Standard Macintosh sound system

DV interface: FireWire card or port, with appropriate drivers installed and functioning properly

Note: Apple iMovie software requires a built-in FireWire. According to Apple's specifications, iMovie is not compatible with add-on 1394 adapters. However, most other DV-capable software is compatible with add-on cards.

Additional Requirements

To fine-tune your system for DV editing, follow these steps:

1. Make sure all your hard disk drives are defragmented.
2. If possible, use a separate drive for storing video material.
3. Disable system extensions that are not required for editing.

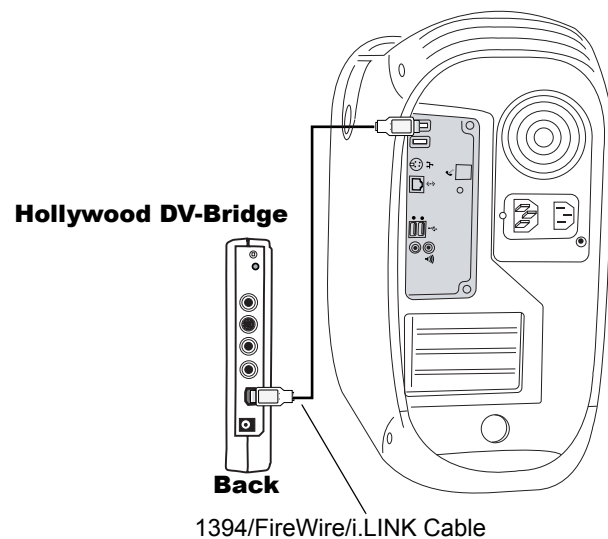
Installation

No software is included with the Hollywood DV-Bridge for the Macintosh. No device drivers are necessary, since the unit utilizes drivers that are part of the Mac OS.

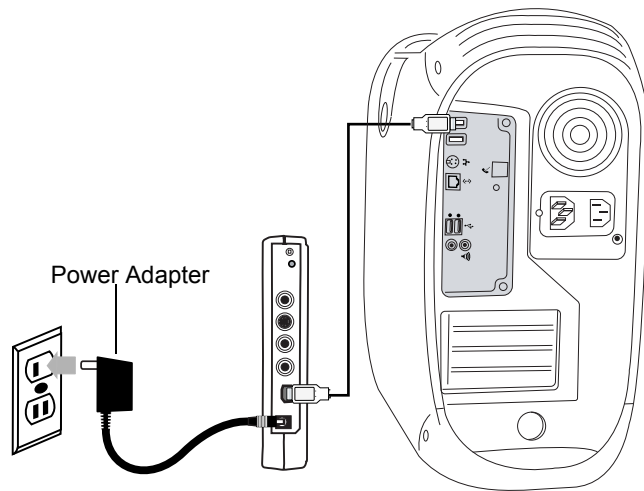
Although no Mac video editing software is included, the Hollywood DV-Bridge is compatible with a wide variety of popular Mac editing programs.

Installing the Hollywood DV-Bridge is an easy, two step process, as described below.

1. Connect the 1394/FireWire/i.LINK cable from the back of the Hollywood DV-Bridge to an available 1394 port on your Mac.



2. Connect one end of the AC power cord to the back of the Hollywood DV-Bridge, and the other end to an electrical outlet.



Note: The Hollywood DV-Bridge utilizes DV drivers that are built into your operating system. Once the unit is connected to your computer and powered on, the Mac should recognize it and load the appropriate drivers automatically.

Capturing Video

This section explains how to capture video from an analog camcorder, VCR, or TV, so you can edit the video and create special effects on your computer. You'll learn how to set up the Hollywood DV-Bridge for analog video input and convert analog video to DV for use on your computer. Before you start capturing, make sure the Hollywood DV-Bridge is connected to your computer and powered up. Then follow the procedures below.

Connecting Analog Video Input

Much of the video recorded on tape until now has been in the analog format. Most camcorders and VCRs in use today record in analog. This format has proven to be a very convenient and cost-effective way to record and share video, but the video world is quickly converting to the DV format.

With the Hollywood DV-Bridge, you can convert your old VHS (and even Beta) tapes and analog camcorder videos to high-quality DV. Since DV is the future of video, you can be sure that your converted material will be around in a convenient, high-quality format for a long time to come. Also, archiving your video in DV is best since it allows for unlimited copying of the video without quality loss from generation to generation.

- 1.** Connect one end of an RCA (composite) video cable (yellow) or S-video cable (black) to the corresponding Video Out connector on the analog camcorder, VCR, or TV.

S-Video provides higher quality video capture than composite video, and should be used if the camcorder or VCR has an S-Video output.

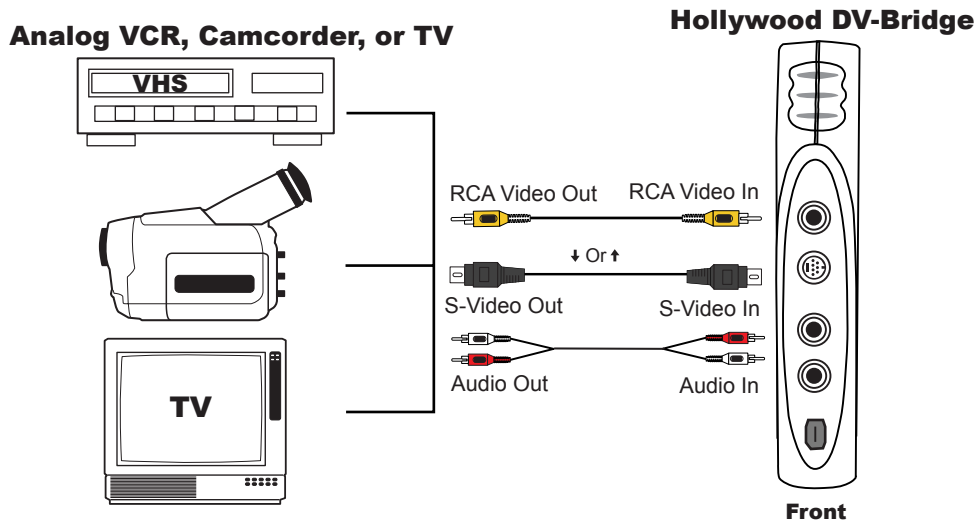
Note: Some TVs do not have Video Out connectors. For specific details, check the documentation included with your TV.

- 2.** Connect the other end of the video cable to the corresponding Video In connector on the front of the Hollywood DV-Bridge.

Note: Some camcorders do not have connectors for standard video cables. If your camcorder is not compatible with standard video cables, use the cables that were included with the camcorder.

3. Connect an RCA audio cable (red and white) from the Audio Out connectors on the analog camcorder, VCR, or TV to the Audio In connectors on the front of the Hollywood DV-Bridge.

Note: Your audio cable may have separate connectors for left and right, or the connectors might be joined as shown in the illustration below. Remember that you need to use a Y-adapter if the analog camcorder or VCR only supports mono output.



Connecting an Optional Preview Monitor

Although you can preview the video in your editing software, you may prefer to view it at full size on a TV monitor. There are two ways to connect a preview monitor.

Method A: During the capture process, if the Hollywood DV-Bridge is not connected for video output to an analog device, connect the TV monitor as follows.

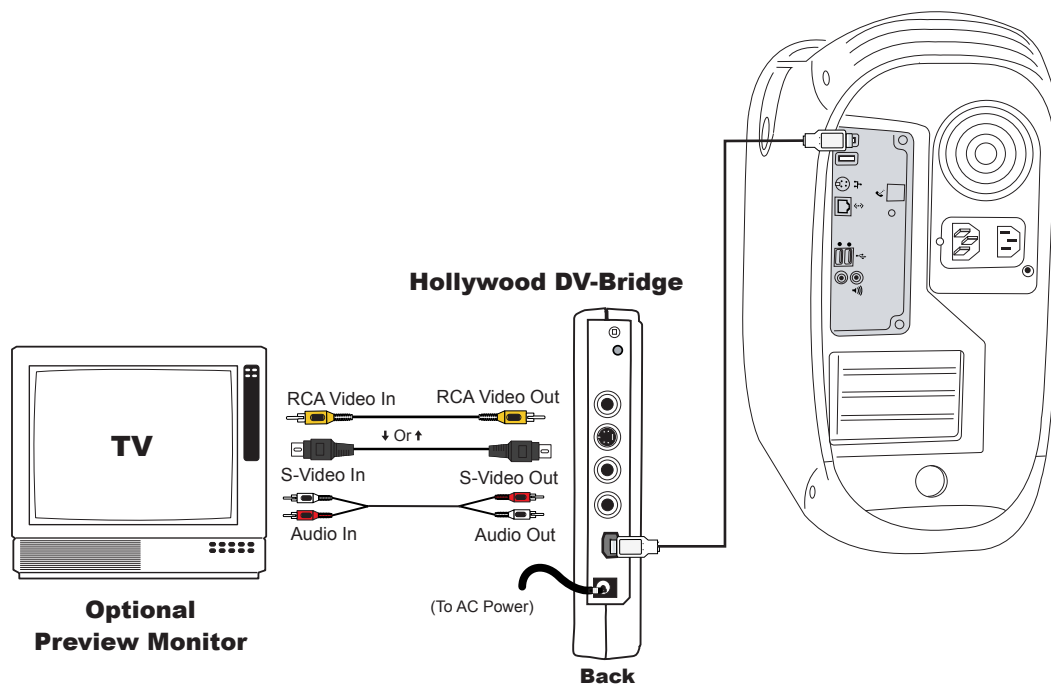
1. Connect one end of an RCA video cable (yellow) or S-video cable (black) to the corresponding Video Out connector on the back of the Hollywood DV-Bridge.
2. Connect the other end of the video cable to the corresponding Video In connector on your TV monitor.

Note: Some older model TVs may not have Video In connectors. For specific details, check the documentation included with your TV.

3. Connect an RCA audio cable (red and white) from the Audio Out connectors on the back of the Hollywood DV-Bridge to the Audio In connectors on the TV monitor.

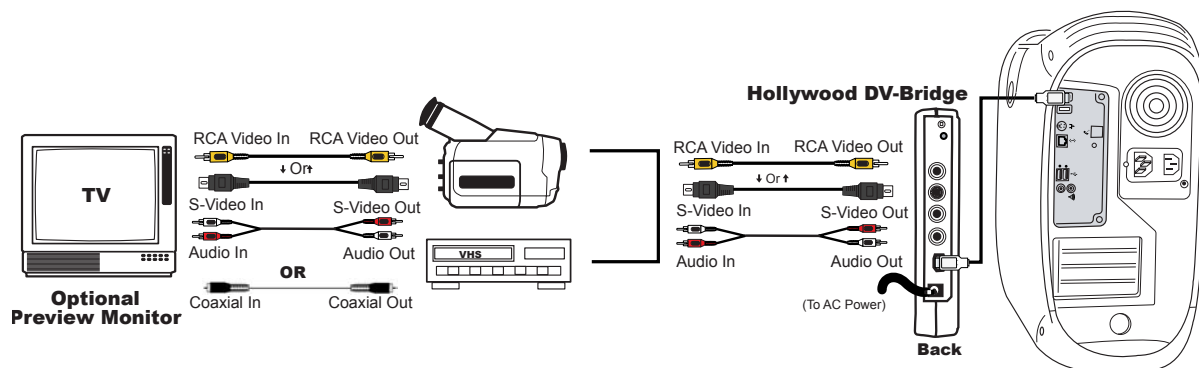
Note: Your audio cable may have separate connectors for left and right, or the connectors might be joined as shown in the illustration below. Remember that you need to use a Y-adapter if the monitor only supports mono input.

IMPORTANT: Make sure that the monitor is set up properly to receive a video signal. It may need to be set to "Line In," "L1," "L2," "Aux" or a similar channel. Check the monitor's documentation for specific details.



Method B: During the capture process, if the Hollywood DV-Bridge is connected for video output to an analog device, connect the output device to the Hollywood DV-Bridge and then connect the TV monitor to the output device. This process is explained later in this user's guide, in the "Outputting Video" section. This method may be helpful if your TV monitor does not have the kinds of video and audio connectors described above. You may be able to connect the monitor to an output device such as a VCR by using a coaxial cable.

Method B results in the configuration shown below.



IMPORTANT: Make sure that the camcorder or VCR and TV monitor are set up properly to receive a video signal. It may be necessary to set a camcorder to VTR mode, while a VCR or monitor might need to be set to "Line In," "L1," "L2," "Aux" or a similar channel. Or, if the monitor is connected to a VCR with a coaxial cable, you may need to set the monitor to channel 3 or 4. Check each device's documentation for specific details.

Capturing Analog Video

1. Launch your DV editing software.

It is important not to launch the software before all the hardware devices are connected!

If you are using a camcorder and capturing from a previously recorded tape, set the camcorder to Video Tape Recorder mode. If you want to capture live video from the camcorder, set it to Camera mode. For analog video captures, the Hollywood DV-Bridge converts the analog video to DV. After the capture operation, the video is stored on your computer's hard disk.

2. Press **Play** on your camcorder or VCR to begin playing the video.

When you reach the point where you want to start capturing, press the **Record** or **Capture** button in the DV editing software.

The analog video is converted to DV by the Hollywood DV-Bridge, and stored on the computer hard disk.

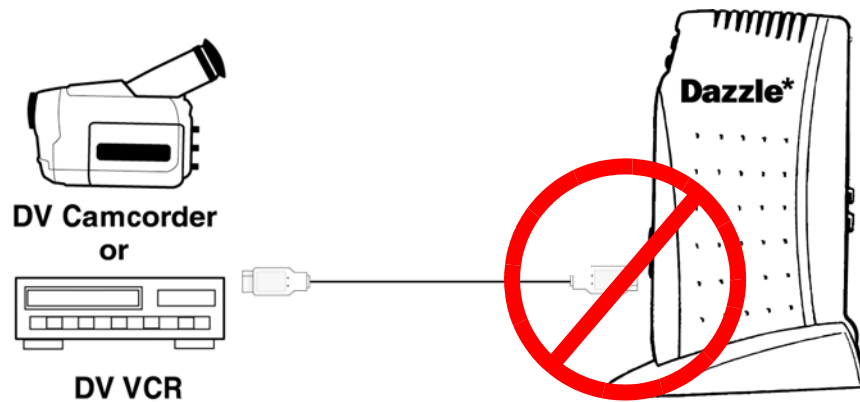
Note: Remember that various video editing programs work differently, so it might be necessary to consult the software's documentation for specific instructions.

Editing Video

Now that your analog video has been captured and converted to DV, you can edit it. Cut out unwanted scenes, splice together different clips and add Hollywood-style special effects like titles, transitions, voiceovers and background music.

Connecting DV Input

If you have a DV camcorder or VCR, there may be times when you would like to capture DV into your computer without any conversion from DV to analog or vice versa. In such cases, you should disconnect the Hollywood DV-Bridge from your Mac and connect the DV camcorder or VCR directly. The additional 1394 port on the front of the DV-Bridge can only be used with a PC.



Outputting Video

This section explains how to output your edited video to an analog camcorder or VCR, so you can create customized video tapes. You'll learn how to set up the Hollywood DV-Bridge for analog video output.

Connecting Analog Video Output

Even though the DV format is growing quickly, for now the majority of people do not have DV devices. This means that it might not be practical to share DV video with family, friends and business associates. Even after you edit video in the fast, high-quality DV format, you can use the Hollywood DV-Bridge to convert your creations to analog. This allows you to easily create videotapes for people with analog VCRs.

Note: If you have an optional preview monitor connected, you must disconnect it to attach the analog camcorder or VCR that you want to record to. However, you may be able to connect it to the output device as described later in this section.

Before you start outputting, make sure that the Hollywood DV-Bridge is connected to your computer and powered up. Then follow these steps:

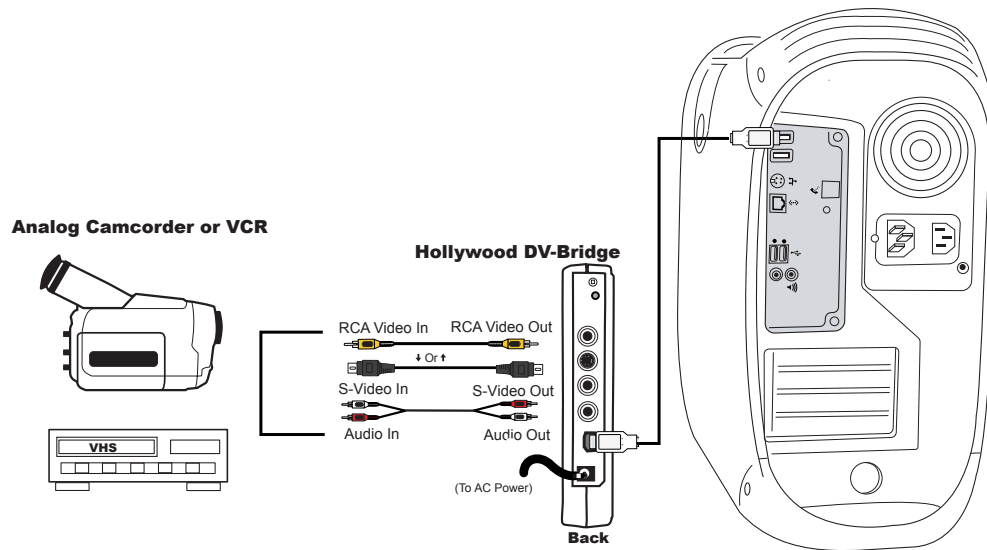
1. Connect one end of an RCA (composite) video cable (yellow) or S-video cable (black) to the corresponding Video Out connector on the back of the Hollywood DV-Bridge.

Note: S-Video provides higher quality video capture than composite video and should be used if your camcorder or VCR has an S-Video connection.

2. Connect the other end of the video cable to the corresponding Video In connector on the camcorder or VCR.

Note: Some analog camcorders do not have inputs. Consult your camcorder's documentation for details on your specific model.

3. Connect an RCA audio cable (red and white) from the Audio Out connectors on the back of the Hollywood DV-Bridge to the Audio In connector(s) on the analog camcorder or VCR.



Note: Your audio cable may have separate connectors for left and right, or the connectors might be joined as shown in the illustration above. Remember that you need to use a Y-adaptor if the analog camcorder or VCR only supports mono input.

IMPORTANT: Make sure that the camcorder or VCR is set up properly to receive a video signal. It might be necessary to set a camcorder to VTR mode, while a VCR might need to be set to “Line In,” “L1,” “L2,” “Aux” or a similar channel. Check the camcorder or VCR’s documentation for specific details.

Connecting an Optional Preview Monitor

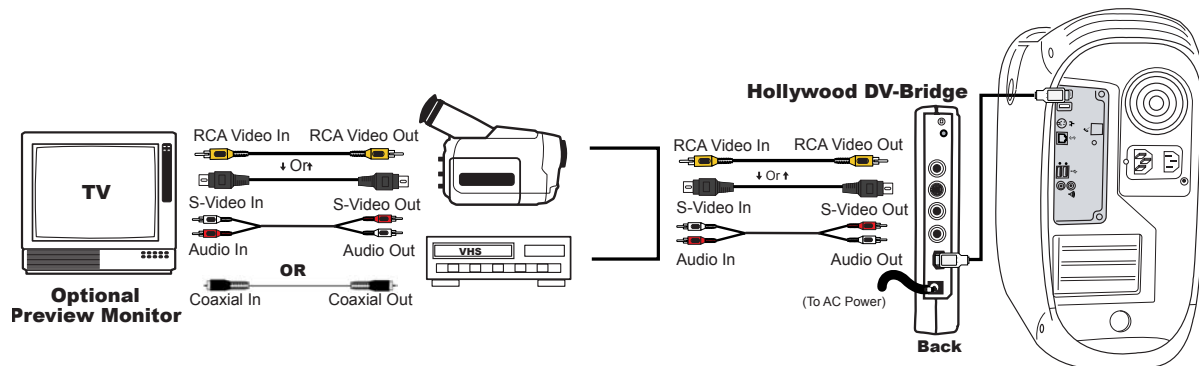
If the connectors on your camcorder or VCR and your monitor are compatible, you can connect a preview monitor as follows:

1. Connect an RCA video cable (yellow) or S-Video cable (black) from the Video Out connector on the camcorder or VCR to the corresponding Video In connector on the TV monitor.
2. Connect an RCA cable (red and white) from the Audio Out connectors on the back of camcorder or VCR to the Audio In connectors on the monitor.

Note: Your audio cable may have separate connectors for left and right, or the connectors might be joined as shown in the illustration below. Remember that you need to use a Y-adaptor if your monitor only supports mono input.

If the TV monitor does not support the kinds of cables shown below, you may be able to connect it using a coaxial cable. Many VCRs and most TVs have this kind of connector, and many VCRs come with a coaxial cable.

Connecting the TV monitor to the camcorder or VCR results in the configuration shown below



IMPORTANT: Make sure that the camcorder or VCR and monitor are set up properly to receive a video signal. It might be necessary to set a camcorder to VTR mode, while a VCR or monitor might need to be set to "Line In," "L1," "L2," "Aux" or a similar channel. Or, if a monitor is connected to a VCR with a coaxial cable, you might need to set the monitor to channel 3 or 4. Check each device's documentation for specific details.

Outputting Analog Video

1. If you are using an analog camcorder, put it into Video Tape Recorder mode.

Cue the tape on the camcorder or VCR to the spot where you want to record the edited video.

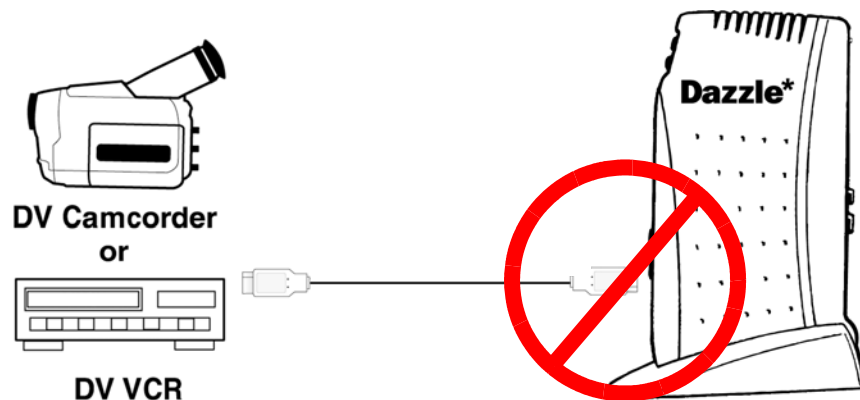
Make sure you do not record over existing footage on the tape that you want to keep.

2. Press the **Record** button on the camcorder or VCR and then click the **Play** or **Output** button in the DV editing software to begin recording from the computer to the camcorder or VCR.

The Hollywood DV-Bridge converts the signal from DV to analog video.

Connecting DV Output

If you have a DV camcorder or VCR, there may be times when you would like to output DV material to your DV device without any conversion from DV to analog or vice versa. In such cases, you should disconnect the Hollywood DV-Bridge from your Mac and connect the DV camcorder or VCR directly. The additional 1394 port on the front of the DV-Bridge can only be used with a PC.



Using the Hollywood DV-Bridge Without a Computer



Converting Analog Video to DV

If you have a DV camcorder or VCR that supports DV input via a 1394 connection, you can use the Hollywood DV-Bridge to convert analog video to DV without using a computer. To begin converting, make sure that the Hollywood DV-Bridge is powered up. Then follow the procedures below.

Connecting Analog Video Input

1. Connect an RCA (composite) video cable (yellow) or S-Video cable (black) to the Video Out connector on an analog camcorder, VCR, or TV.

S-Video provides higher quality video capture than composite video, and should be used if the analog device has an S-Video output.

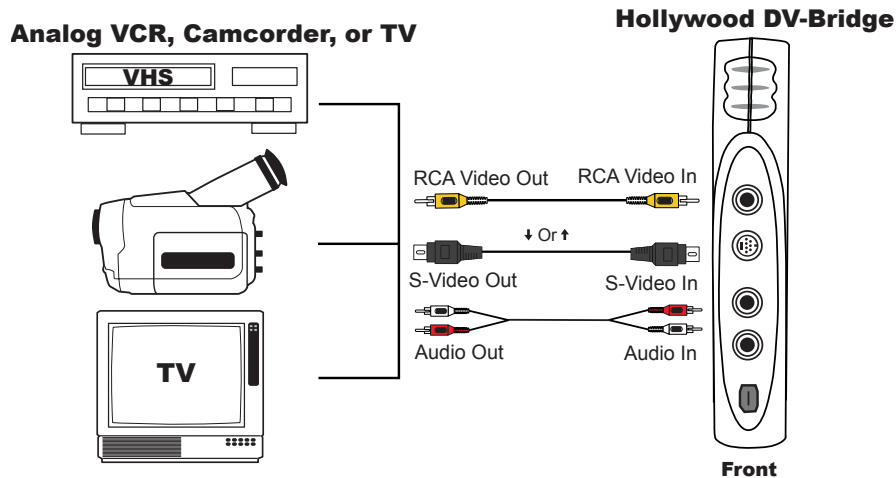
Note: Some TVs do not have Video Out connectors. For specific details, check the documentation included with your TV.

2. Connect the other end of the video cable to the corresponding Video In connector on the front of the Hollywood DV-Bridge.

Note: Some camcorders do not have connectors for standard video cables. If your camcorder is not compatible with standard video cables, use the cables that were included with the camcorder.

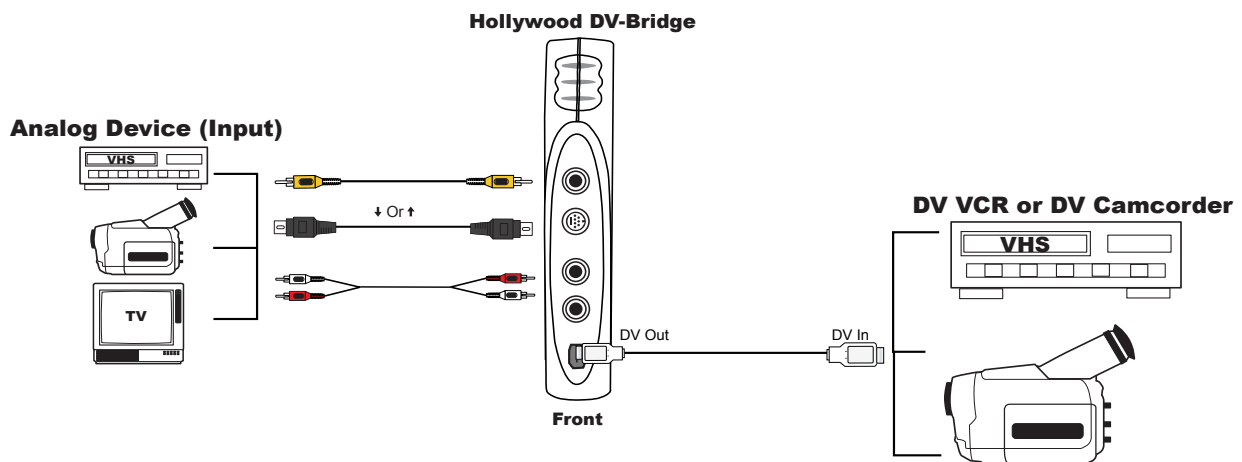
3. Connect an RCA audio cable (red and white) from the Audio Out connector(s) on the analog device (camcorder, VCR, or TV) to the Audio In connectors on the front of the Hollywood DV-Bridge.

Note: Your audio cable may have separate connectors for left and right, or the connectors might be joined as shown in the illustration below. Remember that you need to use a Y-adapter if the analog camcorder or VCR only supports mono output.



Connecting DV Output

Connect a 1394/FireWire/i.LINK cable from the 1394 connector on the front of the Hollywood DV-Bridge to the DV connector on the DV camcorder or VCR.



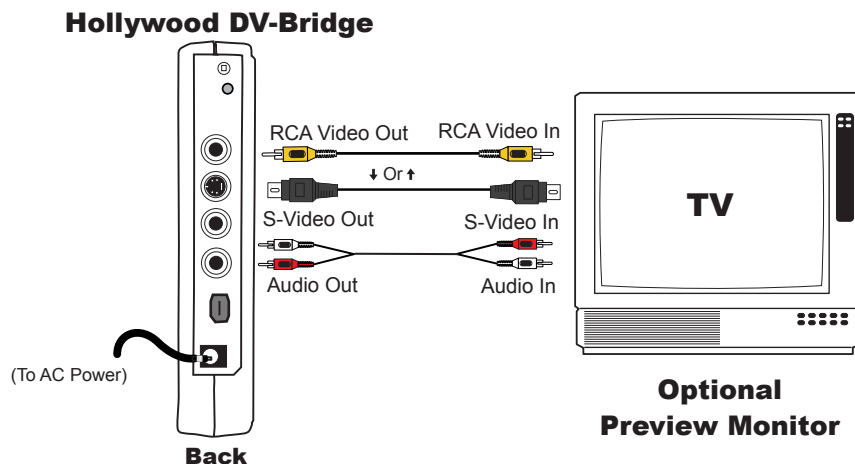
Connecting an Optional Preview Monitor

When you convert Analog Video to DV, there are three ways to connect a preview monitor.

Method A: If an analog output device is not connected to the Hollywood DV-Bridge during the conversion process, connect the TV monitor as follows:

1. Connect an RCA video cable (yellow) or S-Video cable (black) from the Video Out connector on the back of the Hollywood DV-Bridge to the corresponding Video In connector on the TV monitor.
2. Connect an RCA audio cable (red and white) from the Audio Out connector on the back of the Hollywood DV-Bridge to the Audio In connector on the monitor.

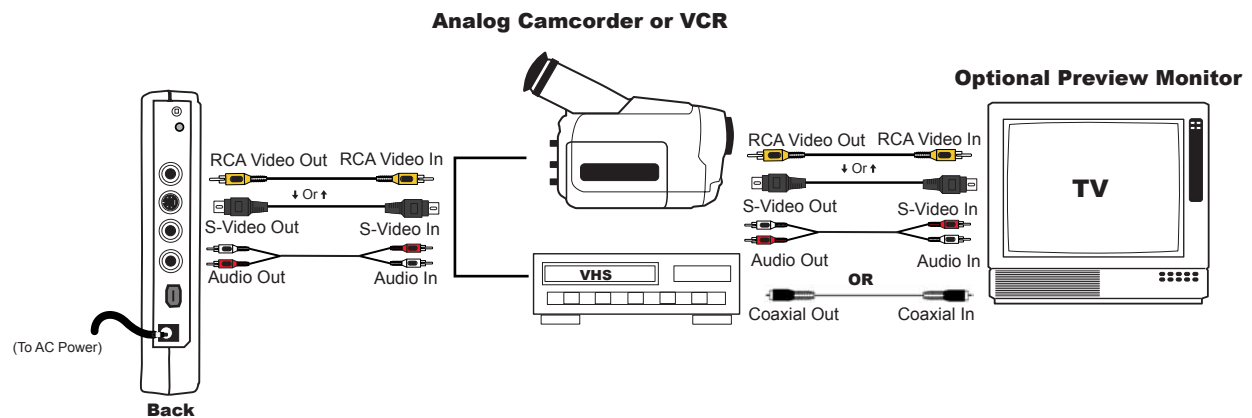
Note: Your audio cable may have separate connectors for left and right, or the connectors might be joined as shown in the illustration below. Remember that you need to use a Y-adapter if the analog camcorder or VCR only supports mono output.



IMPORTANT: Make sure that the monitor is set up properly to receive a video signal. It might need to be set to “Line In,” “L1,” “L2,” “Aux” or a similar channel. Check the monitor’s documentation for specific details.

Method B: If an analog output device is connected during the conversion (for example, if you always leave an output device connected for convenience), you can connect the monitor to the output device. The procedure is the same as described above, except that the monitor is connected to the analog output device instead of directly to the Hollywood DV-Bridge. If your monitor does not have the types of connections described above, you may be able to connect the monitor to an output device such as a VCR by using a coaxial cable.

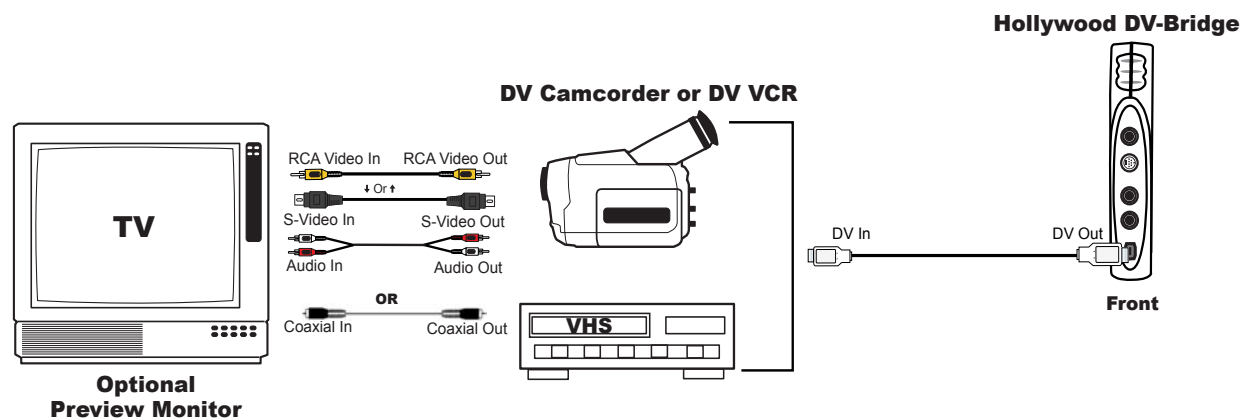
Method B results in the configuration shown below.



Note: The output analog camcorder or VCR shown in the above illustration is not required for the analog-to-DV conversion procedure. Method B is provided for your convenience in case you have an analog output device attached.

IMPORTANT: Make sure that the camcorder or VCR and monitor are set up properly to receive a video signal. It may be necessary to set a camcorder to VTR mode, while a VCR or monitor might need to be set to “Line In,” “L1,” “L2,” “Aux” or a similar channel. Or, if a monitor is connected to a VCR with a coaxial cable, you might need to set the monitor to channel 3 or 4. Check each device’s documentation for specific details.

Method C: Connect the TV monitor to the analog output connectors on the DV camcorder or VCR, as shown below.

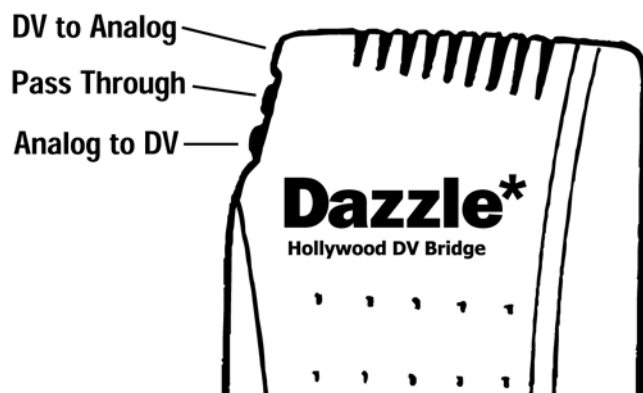


IMPORTANT: Make sure that the camcorder or VCR and monitor are set up properly to receive a video signal. It may be necessary to set a camcorder to VTR mode, while a VCR or monitor might need to be set to “Line In,” “L1,” “L2,” “Aux” or a similar channel. Or, if a monitor is connected to a VCR with a coaxial cable, you might need to set the monitor to channel 3 or 4. Check each device’s documentation for specific details.

Converting Analog to DV

1. Use the Mode Selector button on the back of the Hollywood DV-Bridge to change the mode to **Analog to DV**.

The LED indicators on the front of the unit show the active mode (see the illustration below).



If you are using an analog camcorder as your input (source) device, put it into Video Tape Recorder mode. Cue the tape to the spot where you want to start playing.

If you are using a DV camcorder as your output (target) device, put it into Video Tape Recorder mode. Cue the tape to the spot where you want to start recording. Make sure you do not record over existing footage on the tape that you want to keep.

2. Press the **Play** button on the analog camcorder or VCR, and press the **Record** button on the DV camcorder or VCR.

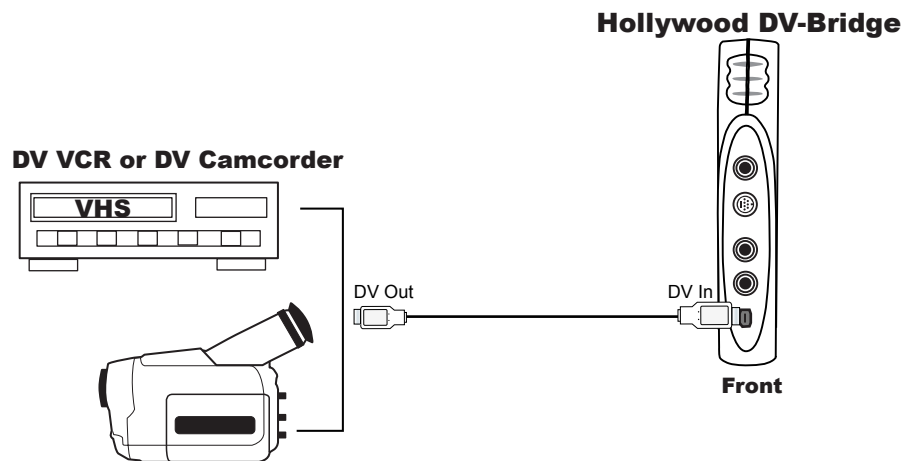
Converting DV to Analog Video

If you have a DV camcorder or VCR, you can use the Hollywood DV-Bridge to convert DV to analog video without using a computer. To begin converting, make sure that the Hollywood DV-Bridge is powered up. Then follow the procedures below.

Connecting DV Input

Connect a 1394/FireWire/i.LINK cable from the 1394 connector on the front of the Hollywood DV-Bridge to the DV connector on the DV camcorder or VCR.

Note: This is the same setup used to connect a DV device for output as described in the previous section, "Converting Analog Video to DV." If you have already made the connection for that purpose, it is not necessary to change it. In this case, the 1394 cable handles input and output.



Connecting Analog Video Output

Note: If an optional preview monitor is connected directly to the Hollywood DV-Bridge from a previous procedure, you must disconnect it to attach the analog camcorder or VCR that you want to record to. But you might be able to attach it to the output device as described later in this section.

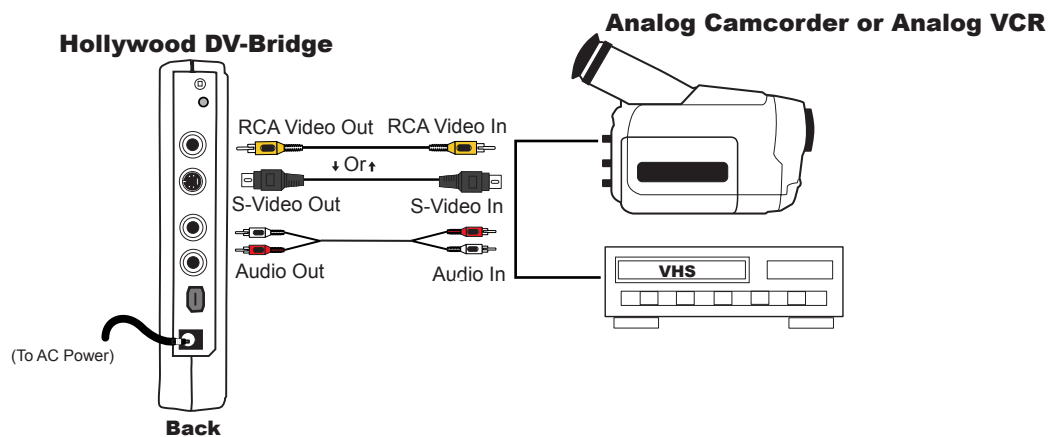
1. Connect an RCA (composite) video cable (yellow) or S-Video cable (black) from the Video Out connector on the back of the Hollywood DV-Bridge to the corresponding Video In connector on the camcorder or VCR.

Note: S-Video provides higher quality output than composite video, and should be used if the camcorder or VCR has an S-Video connection.

2. Connect an RCA audio cable (red and white) from the Audio Out connectors on the back of the Hollywood DV-Bridge to the Audio In connector(s) on the analog camcorder or VCR.

Note: Your audio cable may have separate connectors for left and right, or the connectors might be joined as shown in the illustration below. Remember that you need to use a Y-adaptor if the analog camcorder or VCR only supports mono output.

Some analog camcorders do not have inputs. Consult your camcorder user's guide for details on your specific model.



IMPORTANT: Make sure that the camcorder or VCR is set up properly to receive a video signal. It might be necessary to set a camcorder to VTR mode, while a VCR might need to be set to "Line In," "L1," "L2," "Aux" or a similar channel. Check the camcorder or VCR's documentation for specific details.

Connecting an Optional Preview Monitor

As mentioned before, you can connect a TV monitor to your output device if the monitor and the device have compatible connections.

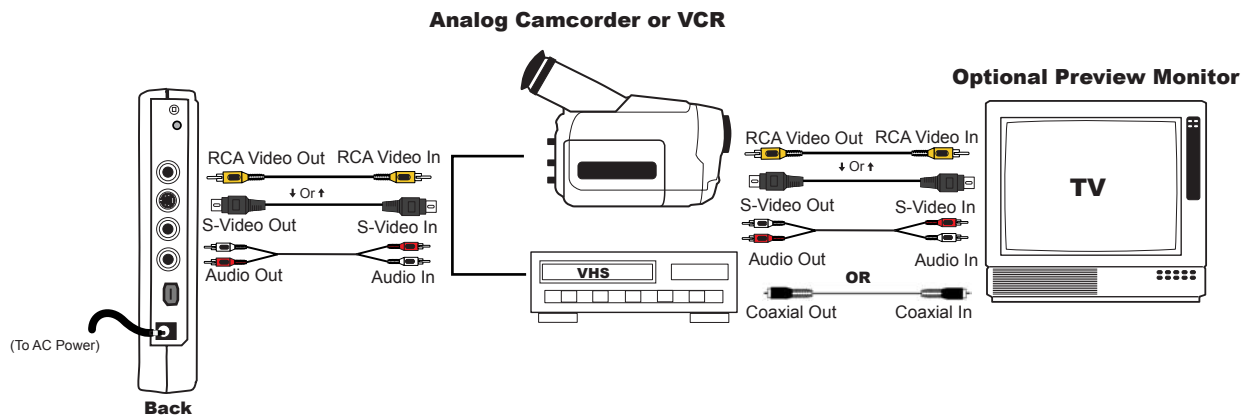
1. Connect an RCA video cable (yellow) or S-Video cable (black) from the Video Out connector on the analog camcorder or VCR to the corresponding Video In connector on the TV monitor.
2. Connect an RCA audio cable (red and white) from the Audio Out connector on the back of camcorder or VCR to the Audio In connector on the TV monitor.

Note: Your audio cable may have separate connectors for left and right, or the connectors might be joined as shown in the illustration below. Remember that you need to use a Y-adapter if the analog camcorder or VCR only supports mono output.

IMPORTANT: Make sure that the TV monitor is set up properly to receive a video signal. It might need to be set to “Line In,” “L1,” “L2,” “Aux” or a similar channel. Check the monitor’s documentation for specific details.

Note: If the TV monitor does not support the kinds of cables shown below, you might be able to connect it using a coaxial cable. Many VCRs and most TVs have this kind of connector, and many VCRs come with a coaxial cable.

Connecting the TV monitor to the output device results in the configuration shown below.

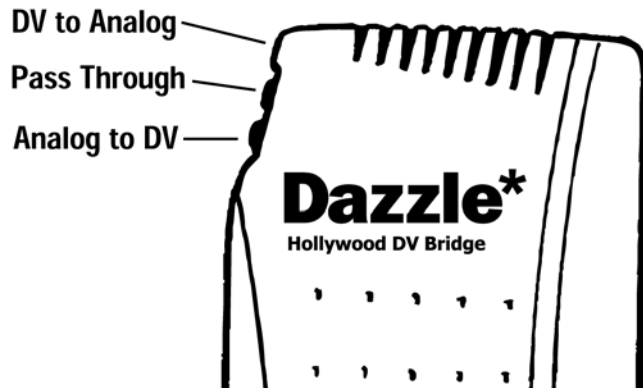


IMPORTANT: Make sure that the camcorder or VCR and TV monitor are set up properly to receive a video signal. It might be necessary to set a camcorder to VTR mode, while a VCR or monitor might need to be set to “Line In,” “L1,” “L2,” “Aux” or a similar channel. Or, if a monitor is connected to a VCR with a coaxial cable, you might need to set the monitor to channel 3 or 4. Check each device’s documentation for specific details.

Converting DV to Analog

1. Use the Mode Selector button on the back of the Hollywood DV-Bridge to change the mode to **DV to Analog**.

The LED indicators on the front of the unit show the active mode (see the illustration below).



If you are using a DV camcorder as your input (source) device, put it into Video Tape Recorder mode. Cue the tape to the spot where you want to start playing.

If you are using an analog camcorder as your output (target) device, put it into Video Tape Recorder mode. Cue the tape to the spot where you want to start recording. Make sure you do not record over existing footage on the tape that you want to keep.

2. Press the **Play** button on the DV camcorder or VCR, and press the **Record** button on the analog camcorder or VCR.

Copying Analog to Analog

If you have two analog devices and you want to copy material from one to the other, the most straightforward way is to connect them directly. However, it might be more convenient to copy through the Hollywood DV-Bridge. For example, if you already have one or both of your analog devices connected to the DV-Bridge from a previous procedure. To begin copying, make sure that the Hollywood DV-Bridge is powered up. Then follow the procedures below.

Connecting Analog Video Input

1. Connect an RCA (composite) video cable (yellow) or S-Video cable (black) to the Video Out connector on an analog camcorder, VCR, or TV.

S-Video provides higher quality video capture than composite video, and should be used if the analog device has an S-Video output.

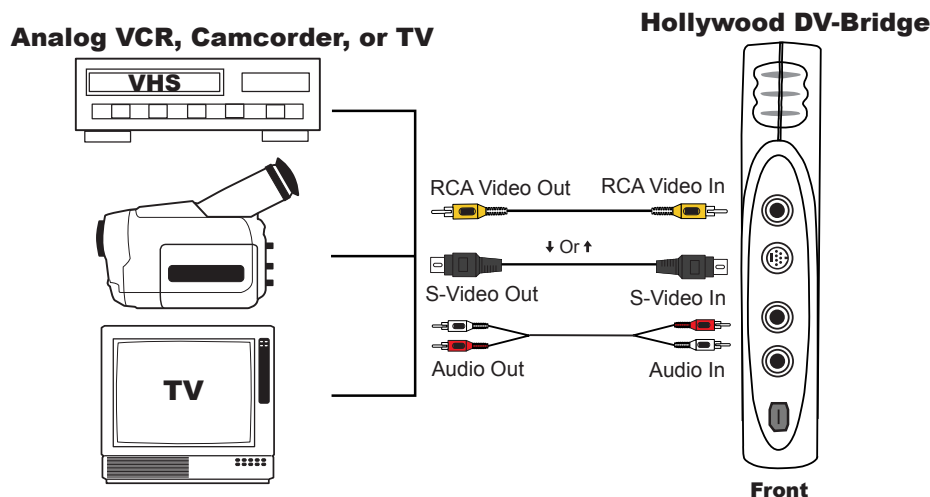
Note: Some TVs do not have Video Out connectors. For specific details, check the documentation included with your TV.

2. Connect the other end of the video cable to the corresponding Video In connector on the front of the Hollywood DV-Bridge.

Note: Some camcorders do not have connectors for standard video cables. If your camcorder is not compatible with standard video cables, use the cables that were included with the camcorder.

3. Connect an RCA audio cable (red and white) from the Audio Out connector(s) on the source device (camcorder or VCR) to the Audio In connectors on the front of the Hollywood DV-Bridge.

Note: Your audio cable may have separate connectors for left and right, or the connectors might be joined as shown in the illustration below. Remember that you need to use a Y-adapter if the analog camcorder or VCR only supports mono output.



Connecting Analog Video Output

Note: If you have an optional preview monitor connected directly to the Hollywood DV-Bridge from a previous procedure, you must disconnect it to attach the analog camcorder or VCR that you want to record to. But you might be able to attach it to the output device as described later in this section.

1. Connect an RCA video cable (yellow) or S-Video cable (black) from the Video Out connector on the back of the Hollywood DV-Bridge to the Video In connector on the camcorder or VCR.

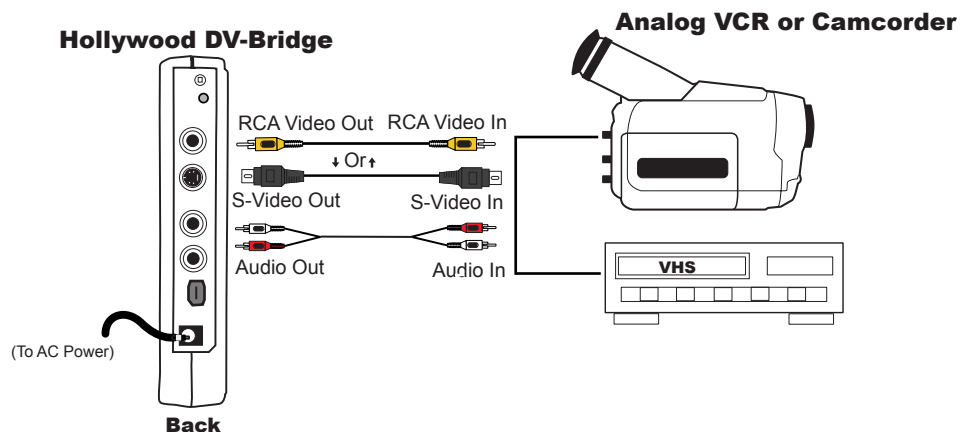
Note: S-Video provides higher quality output than composite video, and should be used if the camcorder or VCR has an S-Video connection.

2. Connect an RCA audio cable (red and white) from the Audio Out connectors on the back of the Hollywood DV-Bridge to the Audio In connector(s) on the analog camcorder or VCR.

Note: Your audio cable may have separate connectors for left and right, or the connectors might be joined as shown in the illustration below. Remember that you need to use a Y-adaptor if the analog camcorder or VCR only supports mono output.

Some analog camcorders do not have inputs. Consult your camcorder user's guide for details on your specific model.

IMPORTANT: Make sure that the camcorder or VCR is set up properly to receive a video signal. It might be necessary to set a camcorder to VTR mode, while a VCR might need to be set to "Line In," "L1," "L2," "Aux" or a similar channel. Check the camcorder or VCR's documentation for specific details.



Connecting an Optional Preview Monitor

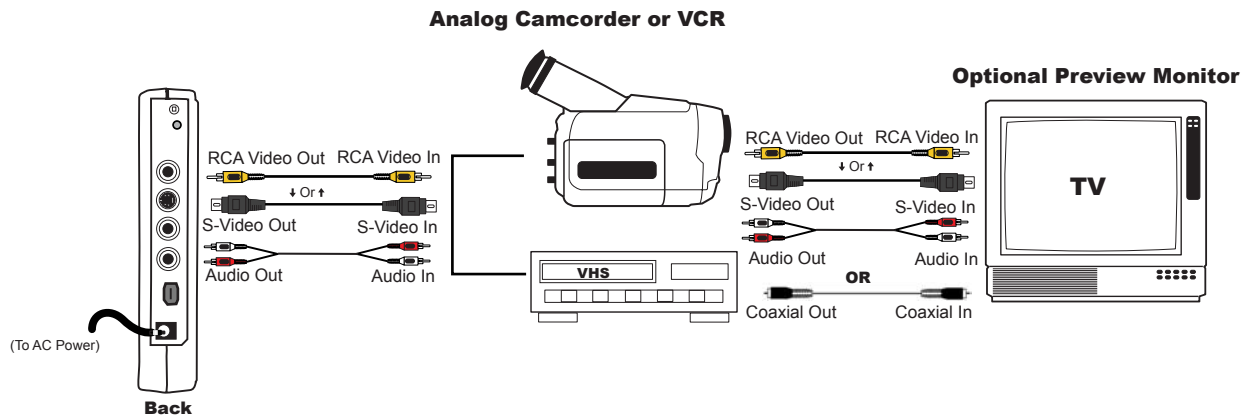
You can connect a TV monitor to your output device if the monitor and the device have compatible connections.

1. Connect an RCA video cable (yellow) or S-Video cable (black) from the Video Out connector on the camcorder or VCR to the corresponding Video In connector on the TV monitor.
2. Connect an RCA audio cable (red and white) from the Audio Out connector on the back of camcorder or VCR to the Audio In connector on the monitor.

Note: Your audio cable may have separate connectors for left and right, or the connectors might be joined as shown in the illustration below. Remember that you need to use a Y-adapter if the analog camcorder or VCR only supports mono output.

If the TV monitor does not support the kinds of cables shown below, you might be able to connect it using a coaxial cable. Many VCRs and most TVs have this kind of connector, and many VCRs come with a coaxial cable.

Connecting the monitor to the output device results in the configuration shown below.

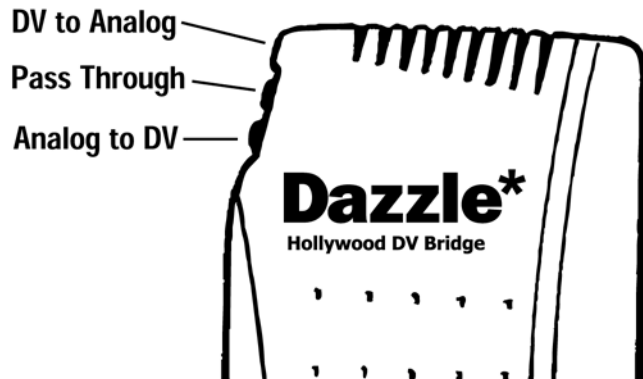


IMPORTANT: Make sure that the camcorder or VCR and monitor are set up properly to receive a video signal. It might be necessary to set a camcorder to VTR mode, while a VCR or monitor might need to be set to “Line In,” “L1,” “L2,” “Aux” or a similar channel. Or, if a monitor is connected to a VCR with a coaxial cable, you might need to set the monitor to channel 3 or 4. Check each device’s documentation for specific details.

Copying Analog to Analog

1. Use the Mode Selector button on the back of the Hollywood DV-Bridge to change the mode to **Pass Through**.

The LED indicators on the front of the unit show the active mode (see the illustration below).



If you are using a camcorder as your input (source) device, put it into Video Tape Recorder mode. Cue the tape to the spot where you want to start playing.

If you are using a camcorder as your output (target) device, put it into Video Tape Recorder mode. Cue the tape to the spot where you want to start recording. Make sure you do not record over existing footage on the tape that you want to keep.

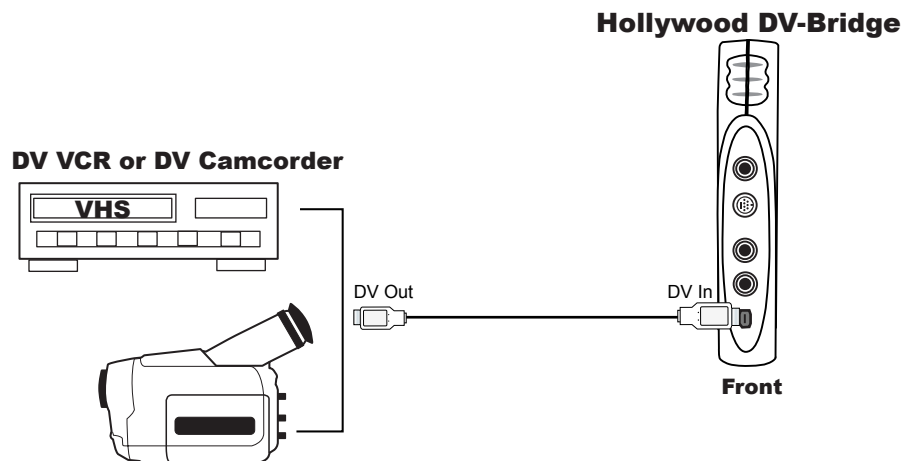
2. Press the **Play** button on the source camcorder or VCR, and press the **Record** button on the target camcorder or VCR.

Copying DV to DV

If you have two DV devices and you want to copy material from one to the other, the most straightforward way is to connect them directly. However, it might be more convenient to copy through the Hollywood DV-Bridge. For example, if you already have one or both of your DV devices connected to the DV-Bridge from a previous procedure, or if both DV devices have 4 pin to 4 pin connectors and you only have 4 pin to 6 pin cables. To begin copying, make sure that the Hollywood DV-Bridge is powered up. Then follow the procedures below.

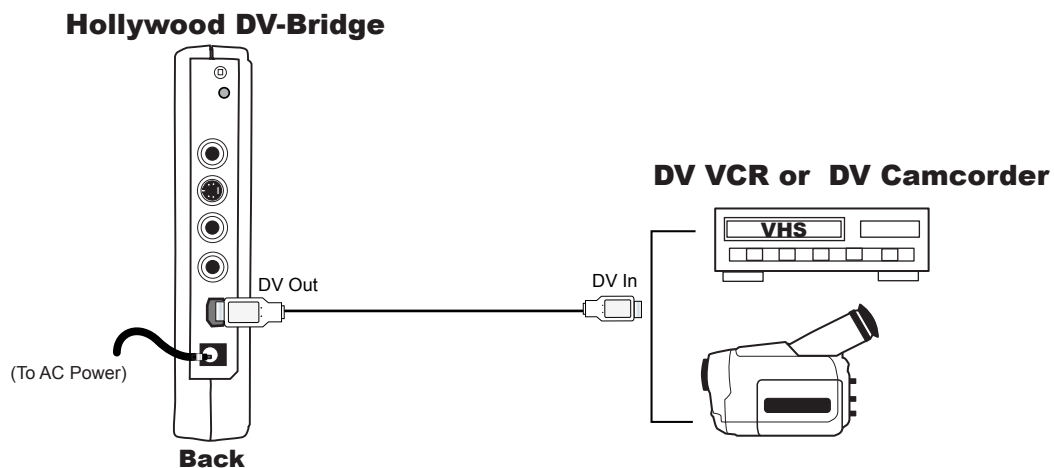
Connecting DV Input

Connect a 1394/FireWire/i.LINK cable from the DV connector on the source DV camcorder or VCR to the 1394 connector on the front of the Hollywood DV-Bridge.



Connecting DV Output

Connect a 1394/FireWire/i.LINK cable from the 1394 connector on the back of the Hollywood DV-Bridge to the DV connector on the destination DV camcorder or VCR.



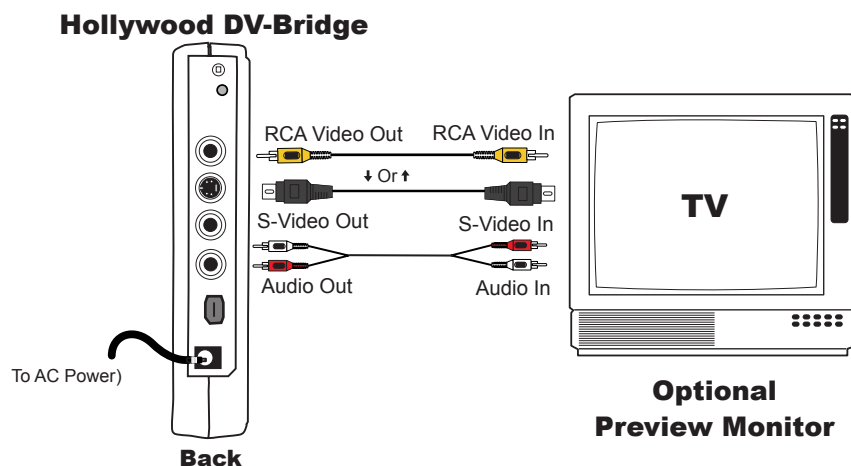
Connecting an Optional Preview Monitor

When you copy DV to DV, there are three ways to connect a preview monitor.

Method A: If an analog output device is not connected to the Hollywood DV-Bridge during the conversion process, connect the monitor as follows.

1. Connect an RCA video cable (yellow) or S-Video cable (black) from the Video Out connector on the back of the Hollywood DV-Bridge to the corresponding Video In connector on the TV monitor.
2. Connect an RCA audio cable (red and white) from the Audio Out connector on the back of the Hollywood DV-Bridge to the Audio In connector on the monitor.

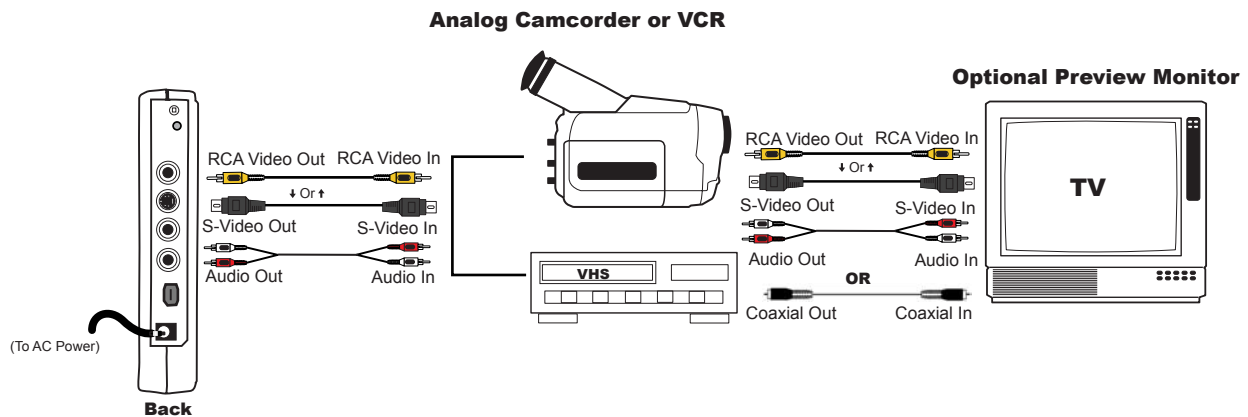
Note: Your audio cable may have separate connectors for left and right, or the connectors might be joined as shown in the illustration below. Remember that you will need to use a Y-adapter if the monitor only supports mono input.



IMPORTANT: Make sure that the monitor is set up properly to receive a video signal. It might need to be set to "Line In," "L1," "L2," "Aux" or a similar channel. Check the monitor's documentation for specific details.

Method B: If an analog output device is connected during the conversion (for example, if you always leave an output device connected for convenience), you can connect the monitor to the output device. The procedure is the same as described above, except that the monitor is connected to the analog output device instead of directly to the Hollywood DV-Bridge. If your monitor does not have the types of connections described above, you may be able to connect the monitor to an output device such as a VCR by using a coaxial cable.

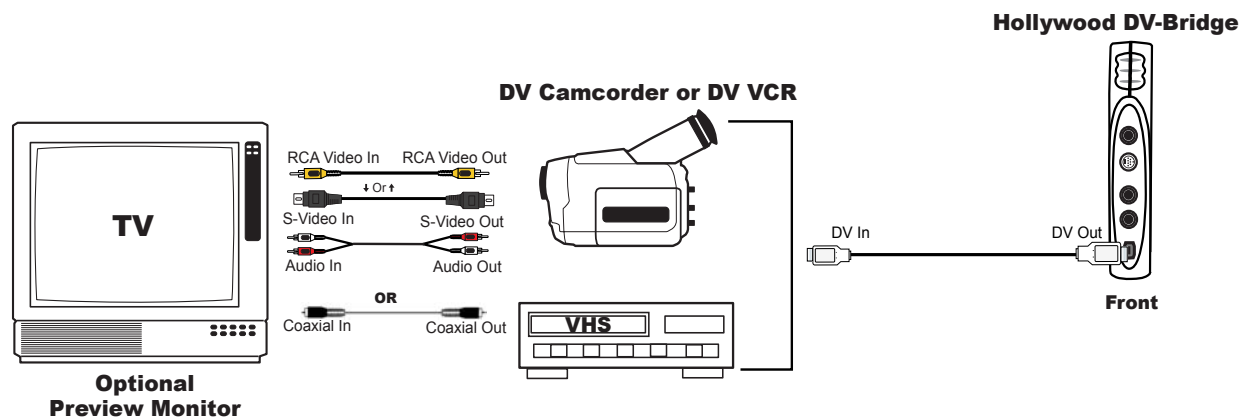
Method B results in the configuration shown below.



Note: The output analog camcorder or VCR shown in the illustration is not required for the DV-to-DV copying procedure. This method is provided for your convenience in case you have an analog output device attached, even though it is not needed for this process.

IMPORTANT: Make sure that the camcorder or VCR and monitor are set up properly to receive a video signal. It might be necessary to set a camcorder to VTR mode, while a VCR or monitor might need to be set to "Line In," "L1," "L2," "Aux" or a similar channel. Or, if a monitor is connected to a VCR with a coaxial cable, you might need to set the monitor to channel 3 or 4. Check each device's documentation for specific details.

Method C: Connect the TV monitor to the analog output connectors on the DV camcorder or VCR, as shown below.



Copying DV to DV

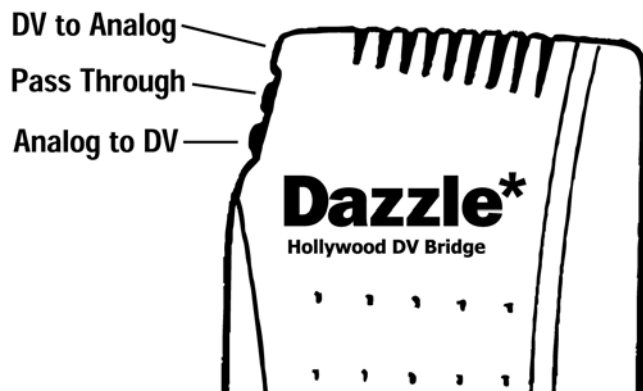
1. Use the Mode Selector button on the back of the Hollywood DV-Bridge to change the mode to **Pass Through**.

The LED indicators on the front of the unit show the active mode (see the illustration below).

If you are using a camcorder as your input (source) device, put it into Video Tape Recorder mode. Cue the tape to the spot where you want to start playing.

If you are using a camcorder as your output (target) device, put it into Video Tape Recorder mode. Cue the tape to the spot where you want to start recording. Make sure you do not record over existing footage on the tape that you want to keep.

2. Press the **Play** button on the source camcorder or VCR, and press the **Record** button on the target camcorder or VCR.



Troubleshooting

Frequently Asked Questions

If you experience difficulties with your Hollywood DV-Bridge, please check the troubleshooting section below for possible solutions. If the problems persist, please go to [page 63](#) of this user's guide for information on contacting Dazzle Technical Support.

When I connect my video source (TV, VCR, or Camcorder) to the Hollywood DV-Bridge using an S-Video cable, I do not see video in the MovieStar 5 preview window.

Make sure your video is playing on your video source. Launch MovieStar 5 and select a capture profile. Next, click the **Capture** button at the top of the MovieStar 5 window. Select your device from the **Video Device** drop-down menu. Locate the red button with the circle in it, directly below the MovieStar 5 preview window. Located to the right of the red button, a drop-down box appears. Click the drop-down arrow and select **S-Video**. Your device is now configured for S-Video capture.

When I try to capture video using the Hollywood DV-Bridge and MovieStar 5, the preview screen in MovieStar 5 displays a green and black image.

Begin by closing and reopening MovieStar 5. Located below the profile option buttons (DV, Video CD, S-Video CD, DVD, MultiMedia), a radio button appears with two options: **PAL/Europe** and **NTSC/USA**. Make sure the **NTSC/USA** radio button is checked (has a black dot in it).

How do I increase my computer system's resources for optimal video performance?

- 1.** Enable Direct Memory Access (DMA).
- 2.** Lower Hardware Acceleration.
- 3.** Get the latest **Video Adapter** Drivers.
- 4.** Get the latest **DirectX** Drivers and Digital Video Capture Update from Microsoft.
- 5.** Delete **Temporary Files**.
- 6.** Lower **Screen Resolution** and **Color Depth** to a maximum of 1024 x 768 24-bit.
- 7.** Update Windows.
- 8.** Update Windows Media Player.
- 9.** Turn off the Windows Screen Saver.
 - Right click on the Desktop.
 - Select **Properties**.
 - Select **Screen Saver**.

10. Close all other Applications (not for Windows 2000 or NT).

- Press <**Ctrl-Alt-Delete**> on your keyboard. The Close Program dialog box appears.
- Select a program other than Explorer and Systray.
- Click **End Task**.
- Repeat the above steps until Explorer and Systray are the only two open programs.

11. Set **Windows Virtual Memory** (Windows 98 SE, Me, only).

- Right click on **My Computer**.
- Select **Properties**.
- Select the **Performance** tab.
- Select the **Virtual Memory** button.
- Select the **Choose Settings** option.
- Set both numbers to 1 1/2 times the amount of physical memory (RAM) installed on your PC (maximum and minimum).
- Click **OK**.
- Click **Yes**.

Note: If you experience any problems after setting virtual memory, set it back and allow Windows to manage the file.

12. Run a disk defragmenting program to speed up your computer's data access functions.

Windows 98SE, Me:

- Click **Start**.
- Click **Run**.
- Type **Defrag**.

Windows 2000, XP:

- Click **Start**.
- Click **Programs**.
- Click **Accessories**.
- Click **System Tools**.
- Click **Disk Defragmenter**.

13. Disable **Windows Visual Effects**.

Windows XP only:

- Open the System Properties.
- Click the **Advanced** tab.
- Click the **Performance - Settings** button.
- Click the **Adjust for best performance** radio button.
- Click **OK**.
- Click **OK**.

14. Set the Windows Page File.

Windows XP only:

- Open the System Properties.
- Click the **Advanced** tab.
- Click the **Performance - Settings** button.
- Click the **Advanced** tab.
- Click the **Change** button.
- Select **Custom Size**.
- Enter 1 1/2 times the amount of physical memory (RAM) installed on your PC for **Initial Size** and **Maximum Size**.
- Click the **Set** Button.
- Click **OK** three times.
- Restart your computer.

For more information regarding the above procedure, please visit the Dazzle Interactive Support Site at www.Dazzle.com. Begin by clicking the **Support** link, then select **Interactive Support**. Next, locate the **GoTo FAQ Answer ID # Box**, enter **301** into the provided box, and click **GO.Technical Support**

Technical Support

Dazzle Technical Resource Center

The Dazzle Hollywood DV-Bridge is easy to use and normally should not produce complications. However, if you need assistance or have questions of any kind, our trained staff members are ready to help. We highly recommend that you use the Dazzle Interactive Knowledgebase at www.Dazzle.com, as this is the fastest method of accessing support resources for your Dazzle product. Begin by clicking the **Support** link, then select **Interactive Support** from the provided menu. E-mail support is also available via our Interactive Knowledgebase.

The screenshot shows the Dazzle Interactive Knowledgebase website. At the top, there is a banner with the text "Interactive Knowledgebase" in red, the Dazzle* logo, and the Microtech logo. Below the banner, a welcome message reads: "Welcome to the interactive knowledgebase area for Microtech and Dazzle brand products. From here you will be able to ask a question and look for answers to the most commonly asked questions." The main heading is "Dazzle* 'Gold Key' Support". The page is divided into several sections: "Announcements" with bullet points about Windows XP compatibility, downloading drivers, and registering products; "Goto FAQ Answer ID#" with a search box; "Drivers and Software Updates" with a link to download drivers; "Search for Answers" with a link to search the knowledge base; "My Personal Stuff" with a link to login; and "E-Mail us a Question" with a link to start searching. A "Privacy Statement" link is also visible at the bottom left.

Dazzle's Technical Resource Center can be reached 24 hours a day 7 days a week.

If you are calling for the first time, or if you are within your 30 day free technical support window (includes the date of your first support call and the 29 days following), contact Dazzle at (203) 315-4230.

If you have extended beyond your free 30 day technical support window, contact Dazzle at (800) 570-9548 (charges apply). We highly recommend having your computer nearby when calling to facilitate troubleshooting.

If you wish to contact Dazzle's Technical Resource Center via fax, you may do so at (203) 483-5985.

In the UK, please contact local support at (0) 9062 160 180 (25p/minute).

Free Manuals Download Website

<http://myh66.com>

<http://usermanuals.us>

<http://www.somanuals.com>

<http://www.4manuals.cc>

<http://www.manual-lib.com>

<http://www.404manual.com>

<http://www.luxmanual.com>

<http://aubethermostatmanual.com>

Golf course search by state

<http://golfingnear.com>

Email search by domain

<http://emailbydomain.com>

Auto manuals search

<http://auto.somanuals.com>

TV manuals search

<http://tv.somanuals.com>