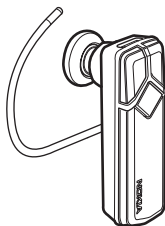


# Nokia Bluetooth Headset BH-703 User Guide

---



Issue 1

## DECLARATION OF CONFORMITY

Hereby, NOKIA CORPORATION declares that this HS-106W product is in compliance with the essential requirements and other relevant provisions of Directive 1999/5/EC. A copy of the Declaration of Conformity can be found at [http://www.nokia.com/phones/declaration\\_of\\_conformity/](http://www.nokia.com/phones/declaration_of_conformity/).

# CE 0560

© 2008 Nokia. All rights reserved.

Nokia, Nokia Connecting People and the Nokia Original Accessories logo are registered trademarks of Nokia Corporation. Other product and company names mentioned herein may be trademarks or tradenames of their respective owners.

Reproduction, transfer, distribution or storage of part or all of the contents in this document in any form without the prior written permission of Nokia is prohibited.

Bluetooth is a registered trademark of Bluetooth SIG, Inc.

Nokia operates a policy of ongoing development. Nokia reserves the right to make changes and improvements to any of the products described in this document without prior notice.

To the maximum extent permitted by applicable law, under no circumstances shall Nokia or any of its licensors be responsible for any loss of data or income or any special, incidental, consequential or indirect damages howsoever caused.

The contents of this document are provided "as is". Except as required by applicable law, no warranties of any kind, either express or implied, including, but not limited to, the implied warranties of merchantability and fitness for a particular purpose, are made in relation to the accuracy, reliability or contents of this document. Nokia reserves the right to revise this document or withdraw it at any time without prior notice.

The availability of particular products may vary by region. Please check with your Nokia dealer for details.

## Export controls

This device may contain commodities, technology or software subject to export laws and regulations from the US and other countries. Diversion contrary to law is prohibited.

Issue 1

# Contents

---

<b>1. Introduction .....</b>	<b>5</b>	Place the headset on the ear .....	12
Bluetooth wireless technology.....	5	Carry the headset in the strap.....	14
<b>2. Get started .....</b>	<b>7</b>	Calls.....	14
Overview .....	7	Adjust the headset volume.....	15
Chargers.....	7	Mute or unmute	
Charge the battery.....	8	the microphone.....	15
Switch the headset on or off.....	9	Switch the call between the	
Pair the headset.....	9	headset and mobile device .....	16
Disconnect the headset.....	10	Clear pairings or reset	
Reconnect the headset.....	10	the headset.....	16
Troubleshooting .....	11	<b>4. Battery information .....</b>	<b>17</b>
<b>3. Basic use.....</b>	<b>12</b>	<b>Care and maintenance.....</b>	<b>19</b>
Change the earplug .....	12		

# 1. Introduction

---

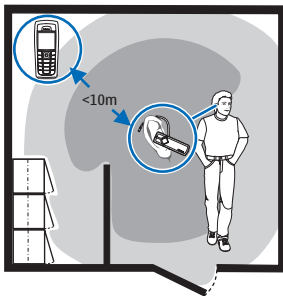
With the Nokia Bluetooth Headset BH-703, you can make and receive calls while on the move. You can use the headset with compatible devices that support Bluetooth wireless technology.

Read this user guide carefully before using the headset. Also, read the user guide for your mobile device that you connect to the headset. It provides important safety and maintenance information. Check [www.nokia.com/support](http://www.nokia.com/support) or your local Nokia website for additional information related to your Nokia product.

This product may contain small parts. Keep them out of the reach of small children.

## ■ Bluetooth wireless technology

Bluetooth wireless technology allows you to connect compatible devices without cables. The mobile device and the headset do not need to be in line of sight, but the maximum distance between the devices should be 10 metres (33 feet). The closer the mobile device and the headset are to each other, the better the performance. The optimal operating range is shown in dark grey in the picture. The connection is



## I n t r o d u c t i o n

subject to interference from obstructions (shown in light grey) or other electronic devices.

The headset is compliant with the Bluetooth Specification 2.1 + EDR supporting the following profiles: Headset Profile 1.1 and Hands-Free Profile 1.5. Check with the manufacturers of other devices to determine their compatibility with this device.

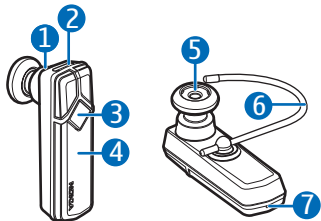
## 2. Get started

---

### ■ Overview

The headset contains the following parts:

1. Indicator light
2. Charger connector
3. Multifunction key
4. Touch-sensitive area for volume adjustment
5. Earpiece with a changeable earplug
6. Earloop
7. Microphone



Before you can start using the headset, you must charge the battery and pair the headset with a compatible device.

Parts of the headset are magnetic. Metallic materials may be attracted to the headset. Do not place credit cards or other magnetic storage media near the headset, because information stored on them may be erased.

### ■ Chargers

The headset is intended for use with the AC-6 and DC-6 chargers.



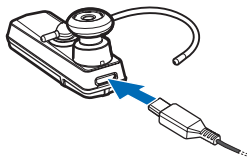
**Warning:** Use only chargers approved by Nokia for use with this particular enhancement. The use of any other types may invalidate any approval or warranty, and may be dangerous.

When you disconnect the power cord of any enhancement, grasp and pull the plug, not the cord.

## ■ Charge the battery

Before charging the battery, carefully read ["Battery information,"](#) p. 17.

1. Connect the charger to a wall outlet.
2. Connect the charger cable to the charger connector. The indicator light is red while charging. Charging the battery fully may take up to 1 hour with the AC-6 or DC-6 charger.
3. When the battery is fully charged, the indicator light turns green. Disconnect the charger from the headset and the wall outlet.



You can also charge the battery through the USB port of a compatible PC using the Nokia Connectivity Cable CA-101 (sold separately). Connect one end of the cable to the charger connector and the other end to the USB port on the PC.

The fully charged battery has power for up to 6 hours of talk time or up to 160 hours of standby time.

When battery power is low, the headset beeps at regular intervals, and the indicator light slowly flashes red.



## ■ Switch the headset on or off

To switch on, press and hold the multifunction key until the headset beeps and the indicator light turns on. When the headset can be connected to a paired device, the indicator light slowly flashes green. When the headset is connected to a paired device and is ready for use, the indicator light slowly flashes blue. If the headset has not been paired with a device, it automatically enters the pairing mode (see [“Pair the headset,”](#) p. 9).

To switch off, press and hold the multifunction key for at least 4 seconds until the headset beeps and the indicator light turns red. If the headset is not connected to a paired device within about 30 minutes, it switches off automatically.

## ■ Pair the headset

1. Ensure that your mobile device is switched on.
2. To pair the headset if it has not been previously paired with a device, switch on the headset. The headset enters the pairing mode, and the indicator light starts to flash blue quickly.

To pair the headset if it has been previously paired with another device, ensure that the headset is switched off, and press and hold the multifunction key until the indicator light starts to flash blue quickly.

3. Activate the Bluetooth feature on the mobile device, and set it to search for Bluetooth devices. See the user guide of your device for instructions.
4. Select the headset (Nokia BH-703) from the list of found devices.

5. Enter the passcode 0000 to pair and connect the headset to your device, if your device asks you to do so. In some mobile devices, you may need to make the connection separately after pairing. See the user guide of your device for details. You only need to pair the headset with your device once.

If pairing is successful, the headset appears in the menu of the mobile device where you can view the currently paired Bluetooth devices.

## Disconnect the headset

To disconnect the headset from your mobile device, switch off the headset, or disconnect it in the Bluetooth menu of your device.

You do not need to delete pairing with the headset to disconnect it.

## Reconnect the headset

To connect the headset to your paired mobile device, switch on the headset, and make the connection in the Bluetooth menu of your device, or press and hold the multifunction key until you hear a short beep.

You may be able to set your mobile device so that the headset connects to it automatically. To activate this feature in a Nokia device, change the paired device settings in the Bluetooth menu.

## ■ Troubleshooting

If you cannot connect the headset to your mobile device, do as follows:

- Ensure that the headset is charged, switched on, and paired with your device.
- Ensure that the Bluetooth feature is activated on your device.
- Ensure that the headset is within 10 metres (33 feet) of your device and that there are no obstructions between the headset and the device, such as walls, or other electronic devices.

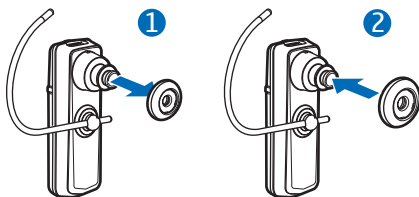
## 3. Basic use

---

### ■ Change the earplug

The headset may be provided with different sized earplugs. Select the earplug that fits the best and is the most comfortable for your ear. When you insert the earpiece into your ear, do not push the earplug deep into the outer auditory canal because in that case the volume may sound too loud.

To change the earplug, pull the current earplug from the earpiece (1), and push the new earplug over the earpiece in the same position (2).

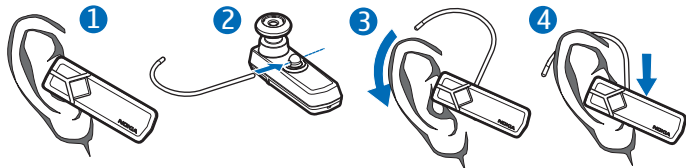


### ■ Place the headset on the ear

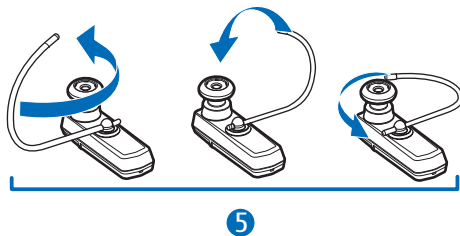
The headset is provided with an earloop.

To use the headset without the earloop, gently push the earpiece into your ear (1), and point the headset toward your mouth.

To use the headset with the earloop, insert the earloop into the small opening at the back of the headset (2). To wear the headset on the right ear, rotate the earloop so that the loop is to the right of the Nokia logo. Slide the earloop over your ear (3), and push or pull the earloop to set its length. Gently push the earpiece into your ear, and set the headset so that it points toward your mouth (4).



To use the headset on the left ear, rotate the earloop so that it is to the left of the Nokia logo (5).



To detach the earloop, gently pull it from the headset.

## ■ Carry the headset in the strap

The headset may be provided with a carrying strap. You can use the strap to wear the headset around your neck.

To attach the headset to the strap, insert the headset into the catch at the end of the strap.

To detach the headset, pull it from the catch.



## ■ Calls

To make a call, use your mobile device in the normal way when the headset is connected to the device. The blue indicator light flashes during the call.

To redial the number you last called (if your mobile device supports this feature with the headset), press the multifunction key twice.

To activate voice dialling (if your mobile device supports this feature with the headset), when no call is in progress, press and hold the multifunction key for about 2 to 3 seconds until the mobile device starts voice dialling, and proceed as described in the user guide of the device.

When you receive a call, the indicator light flashes blue quickly, and you hear a ringing tone through the headset. To answer the call, press the multifunction key, or use the keys of the mobile device. To reject the call, press the multifunction key twice, or use the keys of the mobile device.

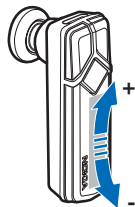
To end a call, press the multifunction key, or use the keys of the mobile device.

To put a call on hold (or to return to a call on hold), press and hold the multifunction key.

To answer a waiting call and put the current call on hold, press and hold the multifunction key. To answer a waiting call and end the current call, briefly press the multifunction key. To switch between the active call and the call on hold, press and hold the multifunction key for about 2 to 3 seconds. To end the active call and activate the call on hold, briefly press the multifunction key. To use these features, your mobile device must support the Bluetooth Hands-Free profile 1.5, and call waiting (network service) must be activated in the device.

## ■ Adjust the headset volume

Move your finger on the touch-sensitive area toward the multifunction key to increase or toward the microphone to decrease the volume during a call, or use the keys of the mobile device.



## ■ Mute or unmute the microphone

To mute or unmute the microphone during a call, tap the touch-sensitive area twice with your finger, or use the respective function in your mobile device.

## ■ Switch the call between the headset and mobile device

To switch the call from the headset to a connected device, press and hold the multifunction key for about 4 seconds (the headset switches off), or use the keys of your device. To switch the call back to the headset, switch on the headset (and connect it to your paired device), or press and hold the multifunction key for about 2 to 3 seconds (when the headset is on).

## ■ Clear pairings or reset the headset

To clear all the pairing settings from the headset when the headset is on, press and hold the multifunction key, and move your finger three times on the touch-sensitive area toward the multifunction key. The indicator light alternates between red, green, and blue twice. After the settings are cleared, the headset enters the pairing mode for about 5 minutes (the indicator light flashes blue quickly).

To reset the headset if it stops functioning even though it is charged, plug the charger into the headset while you press and hold the multifunction key. The reset does not clear the pairing settings.



## 4. Battery information

---

This device has an internal, nonremovable, rechargeable battery. Do not attempt to remove the battery from the device as you may damage the device. The battery can be charged and discharged hundreds of times, but it will eventually wear out. Recharge your battery only with Nokia approved chargers designated for this device. Use of an unapproved charger may present a risk of fire, explosion, leakage, or other hazard.

If the battery is completely discharged, it may take several minutes before the charging indicator light is displayed.

Unplug the charger from the electrical plug and the device when not in use. Do not leave a fully charged battery connected to a charger, since overcharging may shorten its lifetime. If left unused, a fully charged battery will lose its charge over time.

Always try to keep the battery between 15°C and 25°C (59°F and 77°F). Extreme temperatures reduce the capacity and lifetime of the battery. A device with a hot or cold battery may not work temporarily. Battery performance is particularly limited in temperatures well below freezing.

Do not dispose of batteries in a fire as they may explode. Batteries may also explode if damaged.

Never use any charger that is damaged.



**Important:** Battery talk and standby times are estimates only and depend on the mobile device used, features used, battery age and condition, temperatures to which battery is exposed, and many other factors. The amount of time a device is used for calls will affect its standby time. Likewise, the

## Battery information

amount of time that the device is turned on and in the standby mode will affect its talk time.

## Care and maintenance

---

Your device is a product of superior design and craftsmanship and should be treated with care. The following suggestions will help you protect your warranty coverage.

- Keep the device dry. Precipitation, humidity, and all types of liquids or moisture can contain minerals that will corrode electronic circuits. If your device does get wet, allow it to dry completely.
- Do not use or store the device in dusty, dirty areas. Its moving parts and electronic components can be damaged.
- Do not store the device in hot areas. High temperatures can shorten the life of electronic devices, damage batteries, and warp or melt certain plastics.
- Do not store the device in cold areas. When the device returns to its normal temperature, moisture can form inside the device and damage electronic circuit boards.
- Do not attempt to open the device.
- Do not drop, knock, or shake the device. Rough handling can break internal circuit boards and fine mechanics.
- Do not use harsh chemicals, cleaning solvents, or strong detergents to clean the device.
- Do not paint the device. Paint can clog the moving parts and prevent proper operation.

These suggestions apply equally to your device, charger, or any enhancement. If any device is not working properly, take it to the nearest authorised service facility for service.

## Free Manuals Download Website

<http://myh66.com>

<http://usermanuals.us>

<http://www.somanuals.com>

<http://www.4manuals.cc>

<http://www.manual-lib.com>

<http://www.404manual.com>

<http://www.luxmanual.com>

<http://aubethermostatmanual.com>

Golf course search by state

<http://golfingnear.com>

Email search by domain

<http://emailbydomain.com>

Auto manuals search

<http://auto.somanuals.com>

TV manuals search

<http://tv.somanuals.com>