

Makita®

18V LXT LITHIUM-ION CORDLESS DRYWALL SCREWDRIVER

MAKITA BUILT 4-POLE MOTOR HANDLES DRYWALL AND FRAMING APPLICATIONS AT 4,000 RPM

New Durable Silent Clutch Design in Forward Mode for Noise Reduction

Rugged Aluminum Dust-Proof Depth Adjustment Cone Removes Easily for Bit Changes

Extra Fine Depth Adjustment Ring Offers over 60 Detent Positions

Ergonomically Designed Handle With Soft Grip

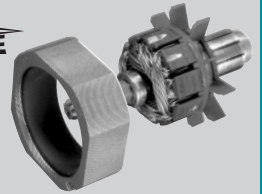
L.E.D. Light Illuminates the Work Area



LXT LITHIUM-ION

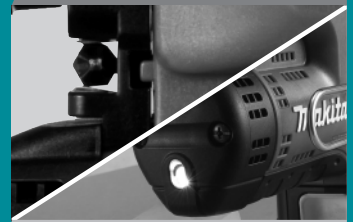
Models
BFS450
BFS450Z

POWER



Powerful, high speed Makita built 4-pole motor handles drywall to framing applications

CONVENIENCE



Extra stow away insert bit and L.E.D. light for dark work spaces

CONTROL



Rugged dust-proof nose piece with fine depth adjustment

PERFORMANCE



LXT Li-Ion batteries charge in 30 minutes, run longer and deliver 2.5X more cycles

QUICK AND SMOOTH

18V LXT LITHIUM-ION CORDLESS DRYWALL SCREWDRIVER

Models BFS450/BFS450Z

FEATURES & BENEFITS

- Makita built 4-pole motor handles drywall and framing applications at 4,000 RPM in a compact lightweight design
- New silent clutch design in forward mode uses extra durable materials decreases driver noise
- Rugged aluminum dust-proof depth adjustment cone removes easily for bit changes
- Extra fine depth adjustment ring with 60 detent positions
- Ergonomically designed handle with soft grip
- L.E.D. light illuminates the work area
- Tool belt clip can be moved to either side of the tool
- Ergonomic shape fits like a glove with even pressure and easy control
- Makita Lithium-Ion provides longer run time, 5x lower self-discharge (for use any time) & 16 firm holding contact terminals (for constant high power)
- 30-Minute rapid optimum charger communicates with the battery's built-in chip throughout the charging process to optimize battery life by actively controlling current, voltage and temperature
- 30-Minute rapid optimum charger has a built-in fan to cool the battery to produce more lifetime work
- 3-year warranty on tool and 1-year warranty on battery and charger

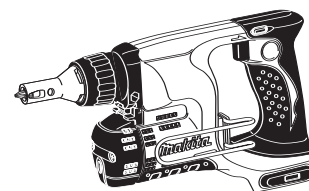
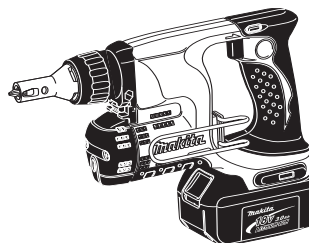


STANDARD EQUIPMENT

- 2 ea. 18V LXT Lithium-Ion 3.0Ah battery (BL1830)
- 30-Minute rapid optimum charger (DC18RA)
- Contractor bag (821007-X)
- Tool hook (281220-7)*
- Plastic battery cover (450128-8)
- 2 ea. 1" insert bit (784211-2)*

Model BFS450Z (tool only) - battery, charger and bag not included

* Included as standard equipment for BFS450Z



SPECIFICATIONS

| | | |
|--------------------|-----------|----------------------|
| Bit shank | | 1/4" Hex |
| No load speed | | 4,000 RPM |
| Battery | | 18VDC (3.0Ah) |
| Overall length | | 10-1/8" |
| Net weight | | 4.2 lbs. (w/battery) |
| Shipping weight | (BFS450) | 12.0 lbs. |
| | (BFS450Z) | 3.4 lbs. |
| Master carton qty. | | 1 |
| UPC Codes: | (BFS450) | 088381-093200 |
| | (BFS450Z) | 088381-093217 |

OPTIONAL ACCESSORIES

- Insert Bit Holder (784801-1)
- Optimum automotive charger (DC18SE)



Makita offers a wide variety of DRYWALL SCREWDRIVER accessories. For a complete listing, please refer to the Makita General Catalog, or visit our website at makitatools.com, or call 1-800-4MAKITA.

All specifications subject to change without prior notice. All models and accessories subject to stock on hand.

NTF-0508-2.5M MA-0459-08

For more information, call 1-800-4MAKITA or visit makitatools.com

Download from www.Somanuals.com. All Manuals Search And Download.



Makita U.S.A., 14930 Northam St., La Mirada, CA 90638

Free Manuals Download Website

<http://myh66.com>

<http://usermanuals.us>

<http://www.somanuals.com>

<http://www.4manuals.cc>

<http://www.manual-lib.com>

<http://www.404manual.com>

<http://www.luxmanual.com>

<http://aubethermostatmanual.com>

Golf course search by state

<http://golfingnear.com>

Email search by domain

<http://emailbydomain.com>

Auto manuals search

<http://auto.somanuals.com>

TV manuals search

<http://tv.somanuals.com>