



OWNER'S MANUAL

AFS-2000 Air Filtration



JET EQUIPMENT & TOOLS, INC.
A WMH Company
www.jettools.com

P.O. BOX 1349
Auburn, WA 98071-1349
e-mail jet@jettools.com

253-351-6000
Fax 800-274-6840
M-708615 5/00

Important Information

**2-YEAR
LIMITED WARRANTY**

**JET offers a two-year limited
warranty on this product**

REPLACEMENT PARTS

Replacement parts for this tool are available directly from JET Equipment & Tools. To place an order, call 1-800-274-6848. Please have the following information ready:

1. Visa, MasterCard, or Discover Card number
2. Expiration date
3. Part number listed within this manual
4. Shipping address other than a Post Office box.

REPLACEMENT PART WARRANTY

JET Equipment & Tools makes every effort to assure that parts meet high quality and durability standards and warrants to the original retail consumer/purchaser of our parts that each such part(s) to be free from defects in materials and workmanship for a period of thirty (30) days from the date of purchase.

PROOF OF PURCHASE

Please retain your dated sales receipt as proof of purchase to validate the warranty period.

LIMITED TOOL AND EQUIPMENT WARRANTY

JET makes every effort to assure that its products meet high quality and durability standards and warrants to the original retail consumer/purchaser of our products that each product be free from defects in materials and workmanship as follows: 2 YEAR LIMITED WARRANTY ON THIS JET PRODUCT. Warranty does not apply to defects due directly or indirectly to misuse, abuse, negligence or accidents, repairs or alterations outside our facilities or to a lack of maintenance. JET LIMITS ALL IMPLIED WARRANTIES TO THE PERIOD SPECIFIED ABOVE FROM THE DATE THE PRODUCT WAS PURCHASED AT RETAIL. EXCEPT AS STATED HEREIN, ANY IMPLIED WARRANTIES OR MERCHANTABILITY AND FITNESS ARE EXCLUDED. SOME STATES DO NOT ALLOW LIMITATIONS ON HOW LONG THE IMPLIED WARRANTY LASTS, SO THE ABOVE LIMITATION MAY NOT APPLY TO YOU. JET SHALL IN NO EVENT BE LIABLE FOR DEATH, INJURIES TO PERSONS OR PROPERTY OR FOR INCIDENTAL, CONTINGENT, SPECIAL OR CONSEQUENTIAL DAMAGES ARISING FROM THE USE OF OUR PRODUCTS. SOME STATES DO NOT ALLOW THE EXCLUSION OR LIMITATION OF INCIDENTAL OR CONSEQUENTIAL DAMAGES, SO THE ABOVE LIMITATION OR EXCLUSION MAY NOT APPLY TO YOU. To take advantage of this warranty, the product or part must be returned for examination, postage prepaid, to an authorized service station designated by our Auburn office. Proof of purchase date and an explanation of the complaint must accompany the merchandise. If our inspection discloses a defect, JET will either repair or replace the product or refund the purchase price, if we cannot readily and quickly provide a repair or replacement, if you are willing to accept such refund. JET will return repaired product or replacement at JET's expense, but if it is determined there is no defect, or that the defect resulted from causes not within the scope of JET's warranty, then the user must bear the cost of storing and returning the product. This warranty gives you specific legal rights, and you have other rights, which vary, from state to state.

JET Equipment & Tools • P.O. Box 1349, Auburn, WA 98071-1349 • (253) 351-6000

WARNING

1. **FOR YOUR OWN SAFETY, READ INSTRUCTION MANUAL BEFORE OPERATING THE TOOL.** Learn the tool's application and limitations as well as the specific hazards peculiar to it.
2. **KEEP GUARDS IN PLACE** and in working order.
3. **ALWAYS WEAR EYE PROTECTION.**
4. **GROUND ALL TOOLS.** If tool is equipped with three prong plug, it should be plugged into a three-hole electrical receptacle. If an adapter is used to accommodate a two prong receptacle, the adapter lug must be attached to a know ground. Never remove the third prong.
5. **KEEP WORK AREA CLEAN.** Cluttered areas and benches invite accidents.
6. **DON'T USE IN DANGEROUS ENVIRONMENT.** Don't use power tools in damp or wet locations, or expose them to rain. Keep work area well-lighted.
7. **KEEP CHILDREN AND VISITORS AWAY.** All children and visitors should be kept a safe distance from work area.
8. **MAKE WORKSHOP CHILDPROOF.** Use padlocks, master switches, or remove starter keys.
9. **DON'T FORCE TOOL.** It will do the job better and be safer at the rate for which it was designed.
10. **USE RIGHT TOOL.** Don't force tool or attachment to do a job for which it was not designed.
11. **WEAR PROPER APPAREL.** No loose clothing, gloves, neckties, rings, bracelets, or other jewelry to get caught in moving parts. Nonslip footwear is recommended. Wear protective hair covering to contain long hair.
12. **ALWAYS USE SAFETY GLASSES.** Wear safety glasses (must comply with ANSI Z87.1). Everyday eyeglasses only have impact resistant lenses; they are not safety glasses. Also use face or dust mask if cutting operation is dusty.
13. **SECURE WORK.** Use clamps or a vise to hold work when practical. It's safer than using your hands and frees both hands to operate tool.
14. **DON'T OVERREACH.** Keep proper footing and balance at all times.
15. **MAINTAIN TOOLS IN TOP CONDITION.** Keep tools sharp and clean for best and safest performance. Follow instructions for lubricating and changing accessories.
16. **DISCONNECT TOOLS** before servicing and when filters.
17. **USE RECOMMENDED ACCESSORIES.** The use of accessories and attachments not recommended by manufacturer may cause hazards or risk of injury to persons.
18. **AVOID ACCIDENTAL STARTING.** Make sure switch is in "OFF" position before plugging in power cord.
19. **NEVER STAND ON TOOL.** Serious injury could occur if the tool is tipped or if the fan blade is accidentally contacted.
20. **CHECK DAMAGED PARTS.** Before further use of the tool, a guard or other part that is damaged should be carefully checked to ensure that it will operate properly and perform its intended function-check for alignment of moving parts, binding of moving parts, breakage of parts, mounting, and any other conditions that may affect its operation. A guard or other part that is damaged should be properly repaired or replaced.
21. **NEVER LEAVE TOOL RUNNING UNATTENDED. TURN POWER OFF.** Don't leave tool until it comes to a complete stop.
22. **DRUGS, ALCOHOL, MEDICATION.** Do not operate tool while under the influence of drugs, alcohol or any medication.
23. **MAKE SURE TOOL IS DICONNECTED FROM POWER SUPPLY** while motor is being mounted, connected or reconnected.
24. **WARNING:** Some dust created by power sanding, sawing, grinding, drilling and other construction activities contains chemicals known to cause cancer, birth defects or other reproductive harm. Some examples of these chemicals are:
 - Lead from lead based paint
 - crystalline silica from bricks and cement and other masonry products, and
 - arsenic and chromium from chemically-treated lumber.
25. Your risk from those exposures varies, depending on how often you do this type of work. To reduce your exposure to these chemicals: work in a well ventilated area, and work with approved safety equipment, such as those dust masks that are specifically designed to filter out microscopic particles

Electrical Requirements

In the event of a malfunction or breakdown, grounding provides a path of least resistance for electric current to reduce the risk of electric shock. This tool is equipped with an electric cord having an equipment-grounding conductor and a grounding plug. The plug must be plugged into a matching outlet that is properly installed and grounded in accordance with all local codes and ordinances.

Do not modify the plug provided. If it will not fit the outlet, have the proper outlet installed by a qualified electrician.

Improper connection of the equipment-grounding conductor can result in a risk of electric shock. The conductor, with insulation having an outer surface that is green with or without yellow stripes, is the equipment-grounding conductor. If repair or replacement of the electric cord or plug is necessary, do not connect the equipment-grounding conductor to a live terminal.

Check with a qualified electrician or service personnel if the grounding instructions are not completely understood, or if in doubt as to whether the tool is properly grounded.

Use only three wire extension cords that have three-prong grounding plugs and three-pole receptacles that accept the tool's plug.*

Repair or replace a damaged or worn cord immediately.

This tool is intended for use on a circuit that has an outlet that looks the one illustrated in Figure A below. The tool has a grounding plug that looks like the grounding plug as illustrated in Figure A below. A temporary adapter, which looks like the adapter as illustrated in Figures B and C below, may be used to connect this plug to a two-pole receptacle, as shown in Figure B if a properly grounded outlet is not available.** The temporary adapter should only be used until a properly grounded outlet can be installed by a qualified electrician. The green colored rigid ear or tab, extending from the adapter, must be connected to a permanent ground such as a properly grounded outlet box.

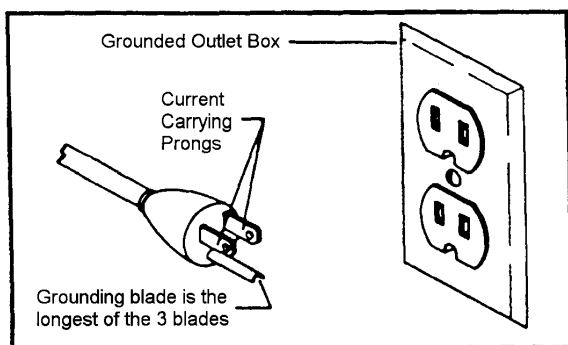


Fig. A

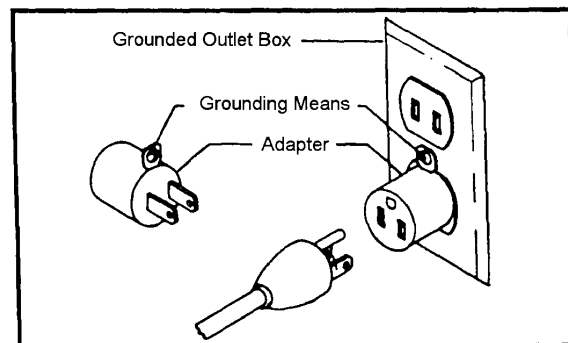


Fig. B

* Canadian electrical codes require extension cords to be certified SJT type or better.

** Use of an adapter in Canada is not acceptable.

Specifications

AFS-2000

Stock Number.....	708615
Outer Filter	5 Microns
Inner Filter	1 Micron
Overall Dimensions (LxWxH/in).....	44 x 24 x 20
Sound Rating @ 3ft	High Speed 73.8 dB
.....	Medium Speed 62.0 dB
.....	Low Speed 59.1 dB
Air Flow	High Speed 1700 CFM
.....	Medium Speed 1200 CFM
.....	Low Speed 800 CFM
Motor	1/3 HP, 115V, 115V Only
Shipping Size (LxWxH/in)	46 x 26 x 22
Net Weight.....	110 lbs.
Shipping Weight.....	121 lbs.

Table of Contents

Page

Warranty.....	2
Warnings	3
Electrical Requirements	4
Specifications	5
Table Of Contents.....	5
For Your Own Safety	5
Contents of Shipping Carton	6
Tools Required for Assembly	6
Assembly.....	6
Controls and Features	7
Changing Filters.....	7-8
Breakdown	9
Parts List	10-11
Wiring Diagram.....	11

FOR YOUR OWN SAFETY

1. Read and understand instruction manual before installing or operating air cleaner.
2. To reduce the risk of injury disconnect the air cleaner from the power source (unplug) before servicing or changing filters.
3. If ceiling mounted, bottom of air cleaner must be at least 7 feet above the floor.
4. If ceiling mounted, mounts must be anchored to building structure which will support a minimum of at least 220 pounds. Never mount to surfaces such as dry wall or false ceiling grids, etc.
5. To reduce the risk of electrical shock, do not expose air cleaner to water or rain.
6. Never duct a machine directly into the air cleaner.
7. To avoid a potentially dangerous situation, do not use this equipment to filter volatile fumes or smoke. This air cleaner is designed and intended for the filtration of air borne wood dust only. It is neither designed or intended for any other purpose whatsoever.
8. Failure to comply may result in serious injury and / or property damage.

The specifications in this manual are given as general information and are not binding. JET Equipment & Tools reserves the right to effect, at any time and without prior notice, changes or alterations to parts, fittings, and accessory equipment deemed necessary for any reason whatsoever.

Contents of Shipping Carton

1. Air Filtration Unit
1. Remote Control
2. AAA Batteries
4. Eye Bolts, Washers & Hex Nuts
1. Manual and Warranty Card

Tools Required for Assembly

10 mm Wrench

- The air filtration unit does not require much assembly. You should take into consideration how and where you will place this unit.
- This unit will work best if it is located away from corners, and heating/cooling vents.
- If using on sawhorses the air filtration unit should be clamped in place.
- This unit is specifically designed to circulate and filter non-metallic dust, which is generated throughout the work area.



Assembly

CAUTION!

Mounts must be anchored to building structure, which will support a minimum of at least 220 pounds. Never mount to surfaces such as dry wall or false ceiling grids, etc.

1. Remove all packing from inside of the unit by opening the side panel.
2. Make sure the hex nut (A, Fig. 1) is threaded all the way up the eyebolt (B, Fig. 1).
3. Place a flat washer (C, Fig.1) on the eye bolt. Screw the eye bolt into the cabinet and tighten hex nut against the cabinet top. You will need to hold the eyebolt so it does not spin while tightening the lock nut.
4. Repeat steps for remaining three eyebolts.

Note: Make sure chain and ceiling hooks are properly rated for hanging this unit. Hang unit with a seven-foot clearance from the floor.

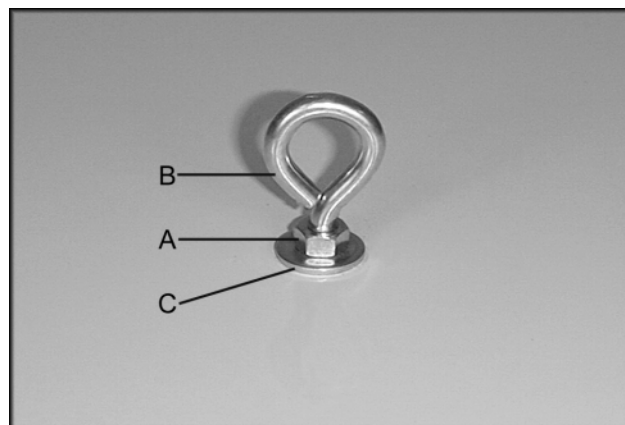


Fig. 1

Controls and Features

Remote Control:

Time button (A, Fig. 2) controls the three different settings.

2H will light up on the back of the unit with one press of the time button. The air filtration system will operate for 2 hours then shut off.

4H will light up on the back of the unit by pressing the time button twice. The air filtration system will operate for 4 hours then shut off.

8H will light up on the back of the unit by pressing the time button three times. The air filtration system will operate for 8 hours then shut off.

Speed button (B, Fig. 2) controls the three different settings, Low, Medium and High. There is also a manual button (C, Fig. 2) on the backside of this unit which controls the speed.

On/Off button (D, Fig. 2) turns the unit on and off. There is also a manual on/off button (E, Fig. 2) on the backside of the unit. Pressing this button will turn the machine on Low.

Overload reset switch (F, Fig. 2) will pop in the case of overload. Wait 3-5 minutes and press the reset switch.

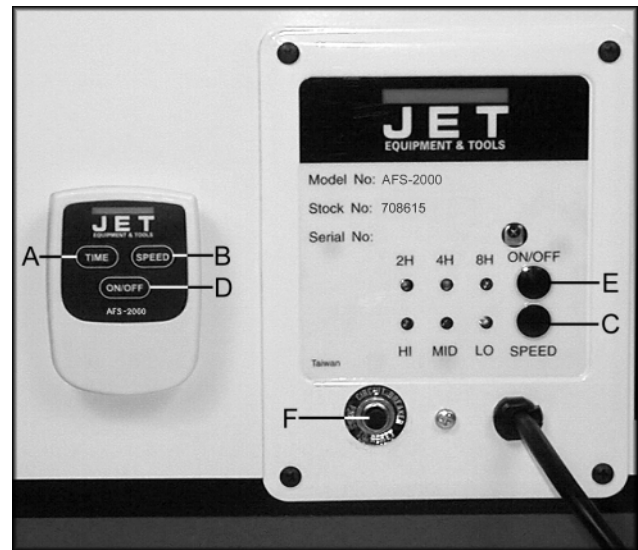


Fig. 2

Changing the Filters

⚠️ WARNING

To reduce the risk of injury disconnect the air filtration unit from the power source (unplug) before servicing or changing filters. Failure to comply may cause serious injury!

Outer Filter: remove from the side of the cabinet (A, Fig. 3). This filter should be replaced depending on the usage and environment of your shop. JET sells a replacement metal framed filter that can be blown out or washed, (stock # 708724 shown in figure 3).

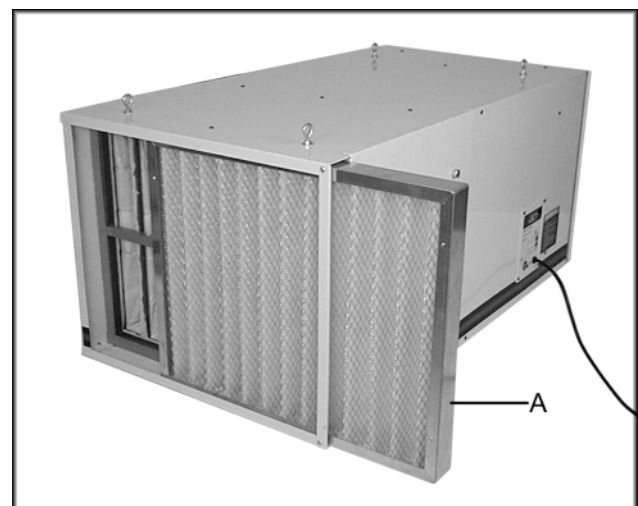


Fig. 3

Inner Filter: you must remove the two bolts (A, Fig. 4) that hold the cover in place. Remove the cover. Remove the inner filter (A, Fig. 5) from the side of the cabinet. Replace the cover and four bolts.

Accessory Filter: an additional charcoal filter, or electrostatic filter can be added to this empty slot (B, Fig.5). Replace the cover and four bolts

Diffuser: the diffuser (A, Fig. 6) should not need any maintenance. You can remove from the side of the cabinet.

The filters should be replaced depending on the amount of usage and the environment of your shop. Clogged filters will reduce the amount of air circulation.

Order replacement filters using the below listed stock numbers.

- 708722 Outer Filter (cardboard frame)
- 708724 Outer Filter (metal frame washable)
- 330025 Air Diffuser
- 708723 Inner Filter
- 708721 Charcoal Filter



Fig. 4

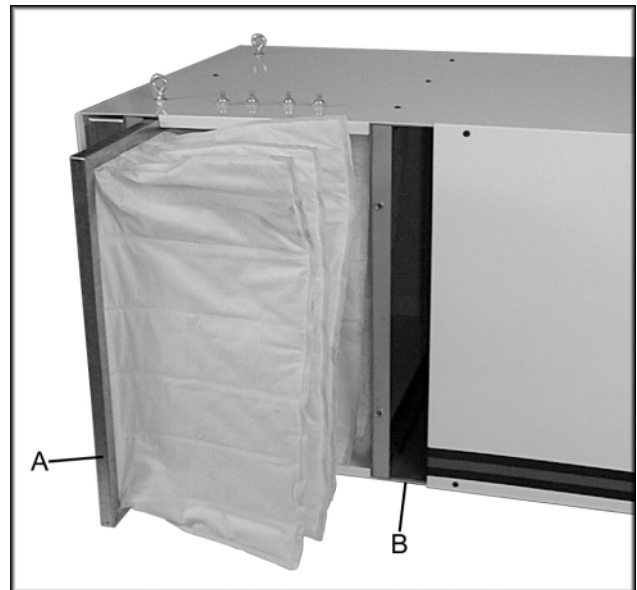


Fig. 5

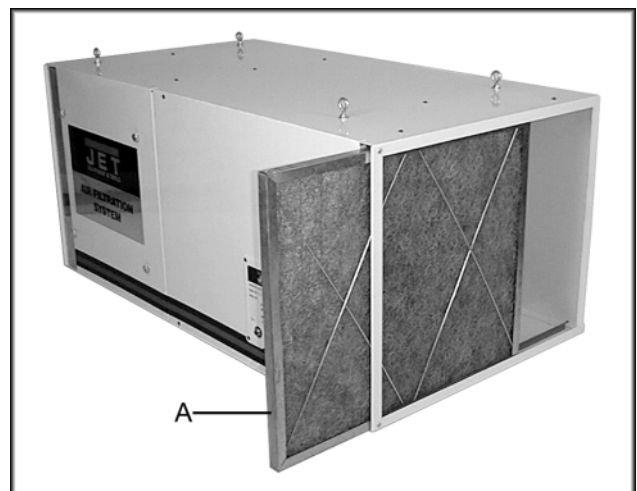
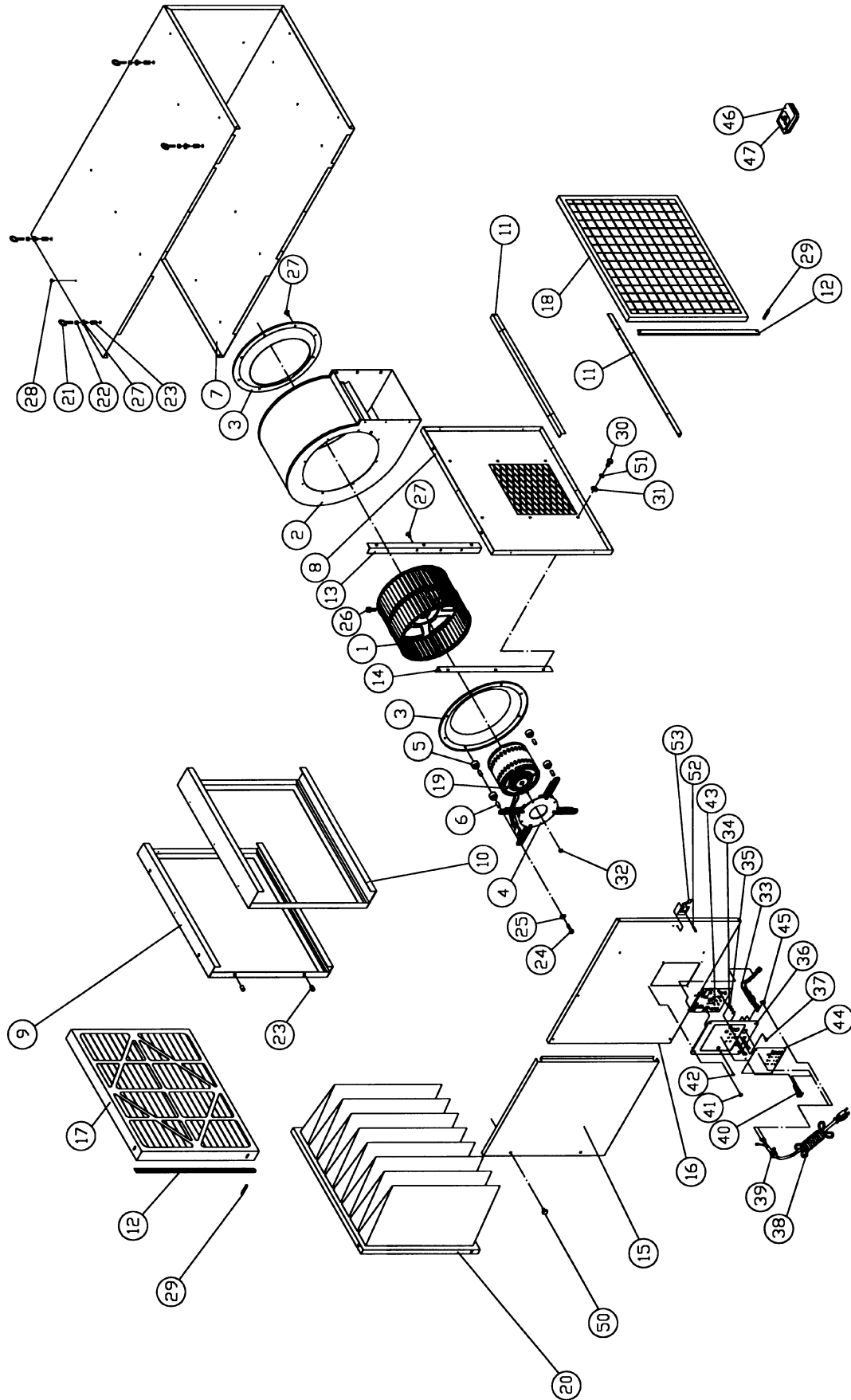


Fig. 6

Parts Breakdown



Parts List for the AFS-2000 Air Filtration

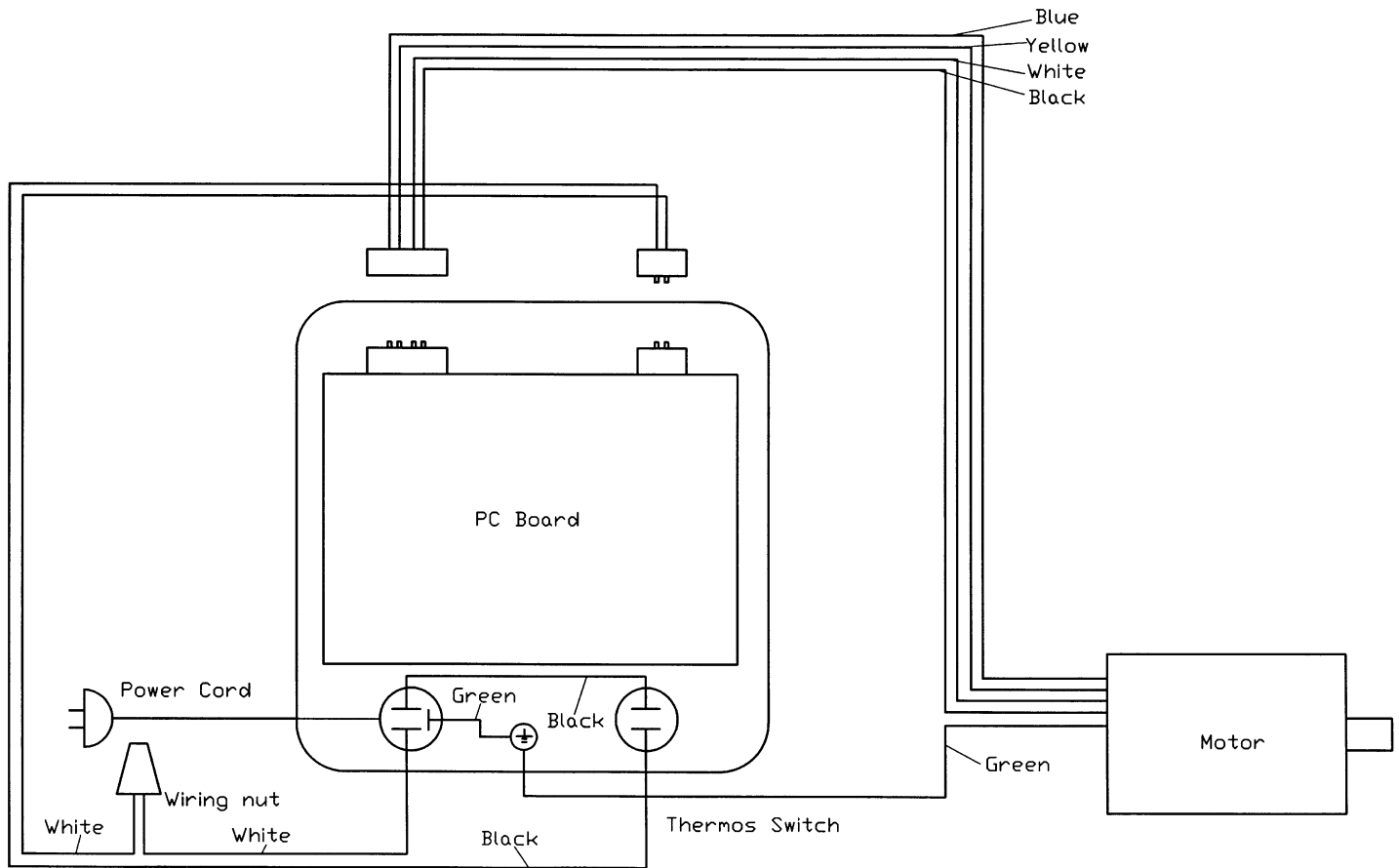
Index No.	Part No.	Description	Size	Qty.
1	330001	Fan Blade		1
2	330002	Fan Housing		1
3	330003	Air Guide Plate		2
4	330004	Flange		1
5	330005	Spacer		4
6	330006	Sleeve		4
7	330040	Box Plate		1
	LM000280	JET Label		2
	LM000351	Warning Label		1
8	AB330010	Fan Plate		1
9	AB330041	Frame		1
10	AB330042	Frame		1
11	330011	Air Filter Support		2
12	330012	Air Box Support		2
13	330017	Fan Support Bar (1)		1
14	330018	Fan Support Bar (2)		1
15	330019	Side Cover		1
16	330020	Fan Cover		1
17	708722	Outer Filter (cardboard frame)	24"x20"x2"	1
	708724	Outer Filter (metal frame: washable)	24"x20"x2"	
18	330025	Air Diffuser	24"x20"x1"	1
19	330026	Motor		1
	CA003000	Capacitor (not shown)		1
20	708723	Inner Filter	24"x20"x12"x8B	1
21	OO1023	Eye Bolt		4
22	NH061000	Nut	M6	4
23	10042	Nut		6
24	SR060600	Hex Socket Bolt	M6x30	4
25	WF061620	Washer	M6x16	4
26	SR089400	Hex Socket Bolt	M8x16	1
27	SF069200	Pan Head Bolt W/Flange	M6x8	22
28	ST049200	Tapping Screw	M4x8	28
29	BR000062	Rivet		4
30	SH089400	Hex Head Bolt	M8x16	6
31	WF081818	Washer	M8x18	6
32	NF050800	Nut	M5	4
33	OO1033	Switch Wire W/Terminal	18AWG	1
34	NH050800	Nut	M5	2
35	WE050000	Star Washer (External)	M5	2
36	OO1022	Switch Plate		1
37	SP059300	Pan Head Bolt	M5x12	1
38	IC001015	Cord	18AWGx3C	1
39	998623	Strain Relief		1
40	330039	8A Thermos Switch		1
41	ST049200	Tapping Screw	M4x8	4
42	SN490200	Counter Sunk Bolt	1/8"x1/4"	3
43	330043	PC Board		1
44	LM000354	Circuit Board Label		1
45	990638	Wiring Nut	P2	1
46	708711	Remote Control		1
47	LM000279	Remote Label		1
50	330030	Bolt		2
51	WS080000	Spring Washer	M8	6

52.....	BR000031.....	Rivet.....	2
53.....	AB001008.....	Door Clip Set.....	1
54.....	WF061620.....	Flat Washer.....	M6.....
55.....	330046.....	Pad.....	2

Optional Replacement Filters:

.....	708722.....	Outer Filter (cardboard frame).....	24"x20"x2".....	1
.....	708724.....	Outer Filter (metal frame: washable).....	24"x20"x2".....	1
.....	330025.....	Air Diffuser.....	24"x20"x1".....	1
.....	708723.....	Inner Filter.....	24"x20"x12"x8B.....	1
.....	708721.....	Charcoal Filter.....	24x20x2.....	1

Wiring Diagram



Free Manuals Download Website

<http://myh66.com>

<http://usermanuals.us>

<http://www.somanuals.com>

<http://www.4manuals.cc>

<http://www.manual-lib.com>

<http://www.404manual.com>

<http://www.luxmanual.com>

<http://aubethermostatmanual.com>

Golf course search by state

<http://golfingnear.com>

Email search by domain

<http://emailbydomain.com>

Auto manuals search

<http://auto.somanuals.com>

TV manuals search

<http://tv.somanuals.com>