


Dell Adapter - USB 3.0 to HDMI/VGA/Ethernet/USB 2.0

User Guide



Model: DA100



 **NOTE:** A NOTE indicates important information that helps you make better use of your computer.

 **CAUTION:** A CAUTION indicates potential damage to hardware or loss of data if instructions are not followed.

 **WARNING:** A WARNING indicates a potential for property damage, personal injury, or death.

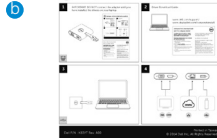
© 2014 Dell Inc. All rights reserved.

Information in this document is subject to change without notice. Reproduction of these materials in any manner whatsoever without the written permission of Dell Inc. is strictly forbidden.

Trademarks used in this text: Dell and the Dell logo are trademarks of Dell Inc., Intel®, Centrino®, Core™, and Atom™ are either trademarks or registered trademarks of Intel Corporation in the U.S. and other countries; Microsoft®, Windows®, and Windows start button logo are either trademarks or registered trademarks of Microsoft Corporation in the United States and/or other countries; Bluetooth® is a registered trademark owned by Bluetooth SIG, Inc. and is used by Dell under license; Blu-ray Disc™ is a trademark owned by the Blu-ray Disc Association (BDA) and licensed for use on discs and players; Other trademarks and trade names may be used in this document to refer to either the entities claiming the marks and names or their products. Dell Inc. disclaims any proprietary interest in trademarks and trade names other than its own.

Contents

- a. Dell Adapter - USB 3.0 to HDMI/VGA/Ethernet/USB 2.0 - DA100
- b. Quick Setup Guide
- c. Software Download Guide



Specifications

Upstream Input

- USB 3.0

Downstream Outputs

- USB 2.0
- HDMI
- VGA
- Gigabit Ethernet

Resolution/Refresh Rate

- Single display : 1 x HDMI (2048 x 1152 max) /60 Hz
- Single display : 1 x VGA (1920 x 1080 max) /60 Hz

Product Overview

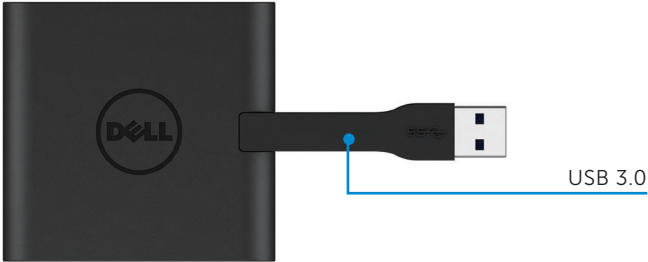
Front View



Back View



Top View



Recommended System Requirements

Hardware

- Dual Core Intel CPU 2 GHz or better
- USB 3.0 output port

Operating System

- Windows OS (Win 7, 8, 8.1) 32/64 bits

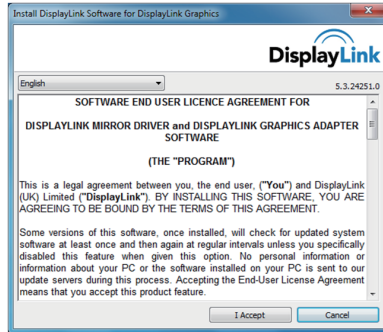
Operating Temperature

Max. operating temperature is 40°C

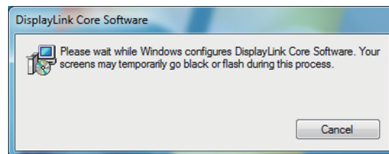
Windows 7/8/8.1 Setup

Note: Do not connect your adapter to your PC before installing the drivers.

1. Download the software driver from <http://www.dell.com/support/>.
Double click on "DisplayLink.exe" when driver is downloaded.
2. After installation, accept the End User License Agreement to continue.

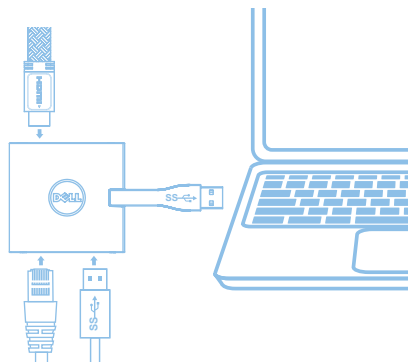


3. Click "I Accept". DisplayLink Core software and DisplayLink Graphics will be installed.



4. Connect your Adapter and peripherals to your PC.


* Adapter supports a single video output capability with the choice of two ports: 1 x HDMI or 1 x VGA



DisplayLink Manager Menu


Menu Option	Description
DisplayLink Manager	Clicking on this item will show the version of DisplayLink software installed.
Check for Updates	Windows update checking.
DisplayLink Devices	Connected DisplayLink devices checking.
Audio Setup	Opens the Windows Audio Configuration window.
Video Setup	Opens the Windows Screen Resolution window.
Screen Resolution	Displays a list of available resolutions.
Screen Rotation	Rotates the screen in clockwise or counter-clockwise direction.
Extend To	Extends the display to the right or left of the main display.
Extend	Extends the Windows desktop onto the display.
Set as Main Monitor	Sets this screen as the main display.
Notebook Monitor Off	Switches off the display of the notebook and makes the DisplayLink display the main display.
Mirror	Copies what is on the main display and reproduces it on this display.
Off	Switches off the display.
Fit to TV	Use this function to adjust the size of the windows to fit the TV screen.

To set the display into extended mode

1. Click on the DisplayLink icon . 
2. Select Extend.

The device is now extended in the direction it was the last time the display was in this mode. For more control, use the Extend To submenu and select one of the options. This puts the device into extend mode, and places it to the Left/Right/Above/Below the main (primary) monitor.

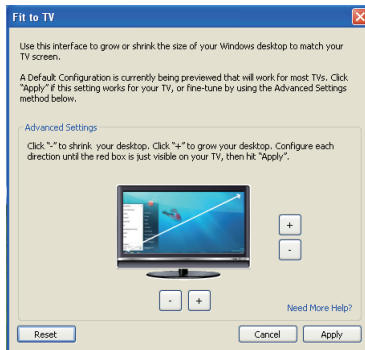
To set the display into mirror mode

1. Click on the DisplayLink icon . 
2. Select Mirror.

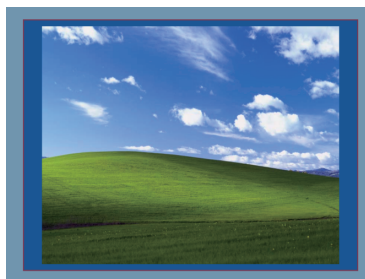
The resolution, colour depth and refresh rate of the primary screen are replicated on the monitor connected to the DisplayLink USB Graphics device.

Fit to TV configuration

1. To configure Fit to TV, choose the option from the DisplayLink GUI.
The following interface appears



2. You will also see a red border on the DisplayLink screen
The red border shows the size of the new Windows desktop. Use the "+" and "-" controls on the Fit to TV GUI to change the size of the red border until it fits on the TV screen.
Note: Finer configuration of the size of the border can be achieved by holding down the CTRL key and clicking the "+" and "-".
3. Once the red border is at the edges of the TV screen, click "Apply" to resize the Windows desktop.



Troubleshooting guide for Dell 4-1 Adapter (DA100)

Troubleshooting	Suggested Solutions
There is no video on the monitor attached to the Adapter	<p>Check the video connection cables</p> <p>Unplug from the power, wait 10 seconds, and then re-connect</p>
The video on the attached monitor is distorted or corrupted	<p>Check video connection cables</p> <p>Check the video resolution under Control Panel\All Control Panel Items\Display\Screen Resolution</p>
The video on the attached monitor is not displaying in extended mode	<p>Change the settings by either:</p> <ul style="list-style-type: none"> • Configuring under Control Panel\All Control Panel Items\Display\Screen Resolution • Switch by cycling the "Windows Key +P"
USB ports are not functioning on the adapter	<p>Unplug from the power, wait 10 seconds and then reconnect</p> <p>Update to the latest USB 3.0 host controller driver</p>
HDCP content is not able to display on the attached monitor	HDCP content support is currently not available
Displaylink Driver not able to install	<p>Get the driver by either:</p> <ul style="list-style-type: none"> • Downloading the latest driver from Dell support or Displaylink website. • Connect to Windows Update with adapter (by using Wi-Fi or Ethernet port of the laptop)
Laptop failed to boot with adapter connected	Remove all USB devices connected to the adapter; some unqualified boot devices may cause lock up at boot screen

Regulatory Information

Dell 4-1 Adapter (DA100) complies with the FCC/CE rules and abides by worldwide regulatory compliance, engineering, and environmental affairs.

Contacting Dell:

1. Visit www.dell.com/support
2. Select your support category
3. Select the appropriate service or support link based on your need.

Or Visit:

<http://www.displaylink.com/support/>.

Free Manuals Download Website

<http://myh66.com>

<http://usermanuals.us>

<http://www.somanuals.com>

<http://www.4manuals.cc>

<http://www.manual-lib.com>

<http://www.404manual.com>

<http://www.luxmanual.com>

<http://aubethermostatmanual.com>

Golf course search by state

<http://golfingnear.com>

Email search by domain

<http://emailbydomain.com>

Auto manuals search

<http://auto.somanuals.com>

TV manuals search

<http://tv.somanuals.com>