

Operation Guide 3446

About This Manual

- Note that the product illustrations in this manual are intended for reference only, and so the actual product may appear somewhat different than depicted by an illustration.
- All explanations in this manual use expressions such as "sounds the alarm" for alarm operations. When the Vibration Alarm is turned on, these expressions should be understood to mean "causes the watch to vibrate" (page E-10).

E-1

Contents

General Guide.....	E-4
Timekeeping Mode.....	E-6
Illumination.....	E-9
Vibration Alarm.....	E-10
Countdown Timer Mode.....	E-12
Stopwatch Mode.....	E-15
Alarm Mode.....	E-18
Dual Time Mode.....	E-22
Specifications.....	E-24

Procedure Lookup

The following is a handy reference list of all the operational procedures contained in this manual.

To set the time and date.....	E-6
To turn the vibration alarm on and off.....	E-11
To set the countdown start time.....	E-13
To use the countdown timer.....	E-14
To turn the Auto-Start function on and off.....	E-17
To set the alarm time.....	E-18
To turn the daily alarm and hourly time signal on and off.....	E-20
To test the alarm sound.....	E-21
To set the Dual Time.....	E-22

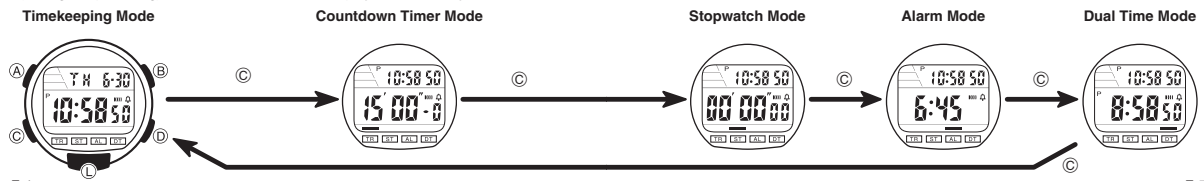
E-2

E-3

General Guide

- Press (C) to change from mode to mode.
- After you perform an operation in any mode, pressing (C) returns to the Timekeeping Mode.
- If you do not press any button for a few minutes while making settings in any mode (indicated when settings are flashing), the watch automatically clears the setting screen (settings stop flashing) and returns to the normal display for the mode you are in.

- This watch returns to the Timekeeping Mode whenever you hold down the (C) button for one or two seconds. If you ever lose track of what mode you are in or what you should do next, hold down (C) to return to regular timekeeping.
- In any mode press (L) to illuminate the display.

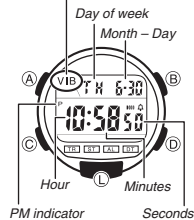


E-4

E-5

Timekeeping Mode

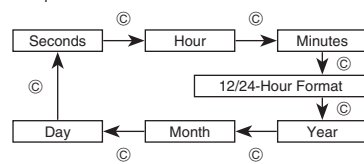
Vibration alarm on indicator (page E-10)



E-6

To set the time and date

1. Hold down (A) while in the Timekeeping Mode until the seconds digits flash on the display because they are selected.
2. Press (C) to change the selection in the following sequence.



3. While the seconds digits are selected (flashing), press (D) to reset the seconds to 00. If you press (D) while the seconds count is in the range of 30 to 59, the seconds are reset to 00 and 1 is added to the minutes. If the seconds count is in the range of 00 to 29, the minutes count is unchanged.
4. While any other digits (beside seconds) are selected (flashing), press (D) to increase the number or (B) to decrease it. While the 12/24-hour format setting is selected, press (D) or (B) to toggle it between 12 and 24.
 - Except for when adjusting the seconds or setting the 12/24-hour format, holding down a button changes the current selection at high speed.
 - When the 12-hour format is selected, the indicator P appears on the display to indicate "P.M." times. There is no indicator for "A.M." times.
 - When the 24-hour format is selected, the indicator 24 appears on the display.
 - The year can be set in the range of 2000 to 2099.
 - The watch's built-in full automatic calendar makes allowances for different month lengths and leap years. Once you set the date, there should be no reason to change it except after you have the watch's battery replaced.
 - The day of the week is displayed automatically in accordance with the date (year, month, and day) settings.

E-7

5. After you set the time and date, press (A) to return to the Timekeeping Mode.

Illumination

- In any mode, press (L) to illuminate the display for about two seconds.
- Illumination may be hard to see when viewed under direct sunlight.
 - Illumination turns off automatically whenever an alarm sounds.
 - Frequent use of illumination runs down the battery.

E-8

E-9

Vibration Alarm

When the Vibration Alarm is turned on, the watch vibrates instead of sounding an alarm. This lets you use the watch without disturbing others by beeping sounds.

- The Vibration Alarm can be used to replace alarm sounds in the Countdown Timer, Stopwatch, and Alarm Modes.
- All explanations in this manual use expressions such as "sounds the alarm" for alarm operations. When the Vibration Alarm is turned on, these expressions should be understood to mean "causes the watch to vibrate".
- Watches with a metal band may produce a noise when a vibration operation is performed. This is due to vibration of the metal band, and does not indicate malfunction of the watch.

To turn the vibration alarm on and off

Vibration alarm on indicator



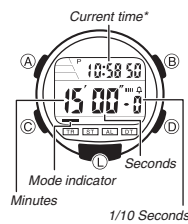
In the Timekeeping Mode, hold down (D) for about two seconds to toggle the Vibration Alarm between on (Vibration Alarm on indicator displayed) and off (indicator not displayed).

- The watch will vibrate when you toggle to on, and beep when you toggle to off.
- Turning on the Vibration Alarm also disables the button operation tone.

E-10

E-11

Countdown Timer Mode



The countdown can be set within a range of 1 second to 24 hours. When the countdown reaches zero, an alarm sounds for 10 seconds or until you press any button.

* The countdown time hour count is shown in place of the current time when the countdown start time setting is one hour or greater, and while a countdown operation is in progress.

To set the countdown start time

- Hold down (A) while in the Countdown Timer Mode. The hours digits flash on the display because they are selected.
- Press (C) to change the selection in the following sequence.



- Press (D) to increase the selected number or (B) to decrease it. Holding down either button changes the selection at high speed.
 - Press (D) and (B) at the same time to clear the starting time to 0:00' 00".
 - To set the starting value of the countdown time to 24 hours, set 0:00' 00".
- After you set the countdown start time, press (A) to return to the Countdown Timer Mode.

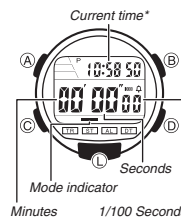
E-12

E-13

To use the countdown timer

- Press (D) while in the Countdown Timer Mode to start the countdown.
- Press (D) again to pause the countdown.
 - You can resume a countdown by pressing (D).
- Stop the countdown timer and then press (B) to reset the countdown time to its starting value.
 - When the end of the countdown is reached, the alarm sounds for 10 seconds or until you stop the alarm by pressing any button. The countdown operation stops and the countdown time is automatically reset to its starting value after the alarm ends.

Stopwatch Mode



The Stopwatch Mode lets you measure elapsed time, split times, and two finishes. The range of the stopwatch is 23 hour, 59 minutes, 59.99 seconds. The Stopwatch Mode also features an Auto-Start function.

* The elapsed time hour count is shown in place of the current time when a stopwatch operation is in progress.

E-14

E-15

(a) Elapsed time measurement



(b) Split time measurement



(c) Split time and two finishes



About the Auto-Start function

With the Auto-Start function, pressing (D) causes the watch to perform a five-second countdown. When the countdown reaches zero, stopwatch operation starts automatically. During the final three seconds of the countdown, a beeper sounds with each second.

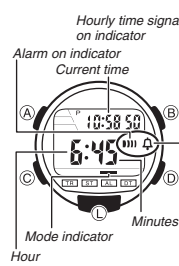
To turn the Auto-Start function on and off

- While the display is showing all zeros in the Stopwatch Mode, press (B) to toggle it on and off.
- The indicator **AUTO-ST** appears and **05** is shown in the upper display while Auto-Start is turned on. The **AUTO-ST** indicator is not shown and the upper part of the display shows the current time when Auto-Start is turned off.

E-16

E-17

Alarm Mode



When the Daily Alarm is turned on, an alarm operation (20-second tone or 10-second vibration) is performed at the preset time each day. Press any button to stop the alarm after it starts to sound. When the Hourly Time Signal is on, the watch beeps every hour on the hour.

To set the alarm time

- Hold down (A) until the hour digits start to flash on the display. The hour digits flash because they are selected.
 - This operation will switch the Daily Alarm on automatically.
- Press (C) to change the selection in the following sequence.



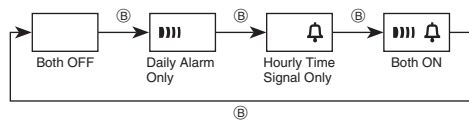
- Press (D) to increase the selected digits and (B) to decrease them. Holding down either button changes the selection at high speed.
 - The format (12-hour and 24-hour) of the alarm time matches the format you select for regular timekeeping.
 - When setting the alarm time using the 12-hour format, take care to set the time correctly as morning (no indicator) or afternoon (P).
- After you set the alarm time, press (A) to return to the Alarm Mode.

E-18

E-19

To turn the daily alarm and hourly time signal on and off

Press (B) while in the Alarm Mode to change the status of the daily alarm and hourly time signal in the following sequence.



- The alarm on indicator (▯▯▯) and the Hourly Time Signal on indicator (🔔) are shown on the display in all modes while these functions are turned on.

To test the alarm sound

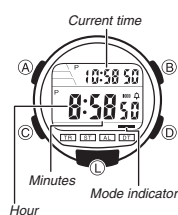
Hold down (B) while in the Alarm Mode to sound the alarm.

- Note that pressing (B) also changes the alarm and the hourly time signal ON/OFF settings.

E-20

E-21

Dual Time Mode



The Dual Time Mode lets you keep track of the time in another time zone. You can also select the timekeeping format (12-hour or 24-hour) separately from the Timekeeping Mode.

To set the Dual Time

1. Hold down (A) while in the Dual Time Mode. The hour digits flash on the display because they are selected.
2. Press (C) to change the selection in the following sequence.
3. Press (D) to increase the selected digits and (B) to decrease them. Holding down either button changes the selection at high speed.

4. After you set the time, press (A) to return to the Dual Time Mode.
 - In the Dual Time Mode, the seconds count is synchronized with the seconds count of the Timekeeping Mode.
 - In the Dual Time Mode, press (B) to toggle between the 12-hour and 24-hour formats.

E-22

E-23

Specifications

- Accuracy at normal temperature:** ±30 seconds a month
- Timekeeping:** Hour, minutes, seconds, pm (P), day of the week, month, day
Time format: 12-hour and 24-hour formats
Calendar system: Full Auto-calendar pre-programmed from the year 2000 to 2099
- Countdown Timer**
Measuring unit: 1/10 second
Input range: 1 second to 24 hours
- Stopwatch**
Measuring unit: 1/100 second
Measuring capacity: 23 hours 59 minutes, 59.99 seconds
Measuring modes: Elapsed time, split time and two finishes
Other: Auto-Start
- Alarm:** Daily alarm, hourly time signal

Dual Time

- Other:** LED (light-emitting diode); Vibration alarm
 - Battery:** One lithium battery (Type: CR2032)
 - Battery life:** 10 years under the following conditions
 - One 2-second light operation per day
 - One alarm operation per day
 Note: One alarm operation is 20-second audible alarm or 10-second vibration alarm.
- Specifications are subject to change without notice.

E-24

E-25

Free Manuals Download Website

<http://myh66.com>

<http://usermanuals.us>

<http://www.somanuals.com>

<http://www.4manuals.cc>

<http://www.manual-lib.com>

<http://www.404manual.com>

<http://www.luxmanual.com>

<http://aubethermostatmanual.com>

Golf course search by state

<http://golfingnear.com>

Email search by domain

<http://emailbydomain.com>

Auto manuals search

<http://auto.somanuals.com>

TV manuals search

<http://tv.somanuals.com>