



MFC-J1010DW
MFC-J1012DW
MFC-J1170DW

EN

FR



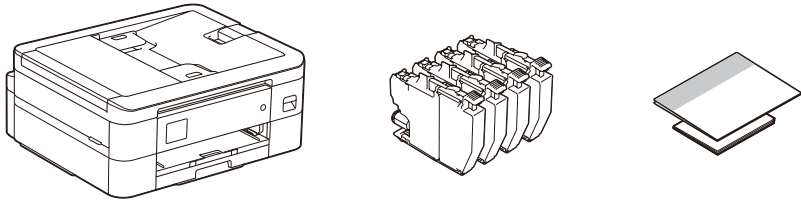
Video setup instructions:
support.brother.com/videos



The latest manuals are available at the Brother support website:
support.brother.com/manuals

1 Unpack the machine and check the components

Remove the protective tape or film covering the machine and the supplies. The components included in the box may differ depending on your country.



* Most of the illustrations in this *Quick Setup Guide* show the MFC-J1010DW.

Manuals in Spanish for this model are available at support.brother.com.
Manuales en Español para este modelo están disponibles en support.brother.com.

NOTE

- Save all packing materials and the box in case you must ship your machine.
- **You must purchase the correct interface cable for the interface you want to use.**

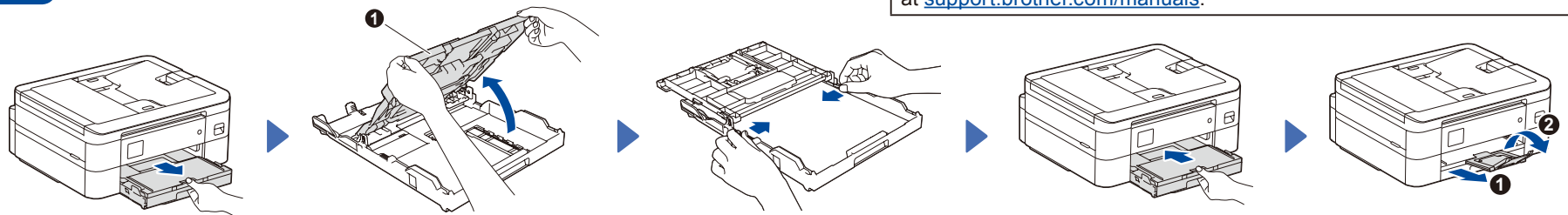
USB cable

Use a USB 2.0 cable (Type A/B) that is no more than 6 feet (2 meters) long.

Ethernet (Network) cable (MFC-J1170DW only)

Use a straight-through Category 5 (or greater) twisted-pair cable for 10BASE-T or 100BASE-TX Fast Ethernet Network.

2 Load plain Letter paper in the paper tray



After finishing the machine setup, you can change the paper type or size. For more information about paper handling, see the *Online User's Guide* at support.brother.com/manuals.

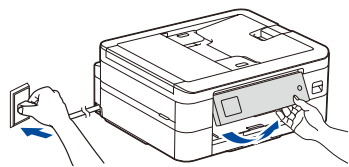
Open the output paper tray cover ❶.

Adjust the paper guides. Fan the paper well and load it in the tray.

Close the output paper tray cover, and then slowly push the tray completely into the machine.

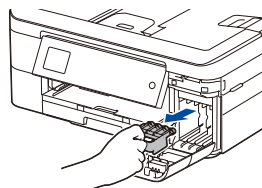
Pull out the paper support ❶, and unfold the paper support flap ❷ so that the printed pages do not fall.

3 Connect the power cord



NOTE
You can adjust the control panel angle to read the LCD more easily.

4 Install the starter ink cartridges



Open the ink cartridge cover and remove the orange protective part from the machine.

NOTE
Do not throw away the orange protective part. You will need it if you transport the machine.

Follow the LCD instructions to install the ink cartridges. Close the ink cartridge cover. The machine will prepare the ink tube system for printing.

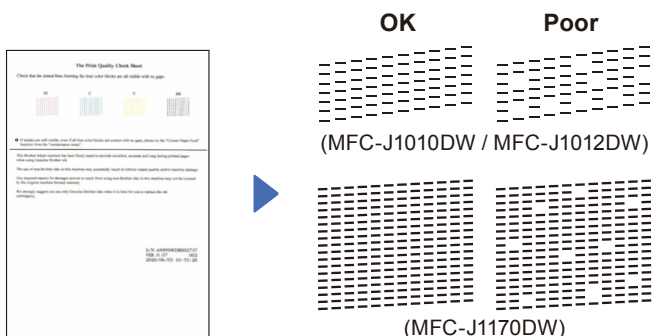
NOTE
The first time you install the ink cartridges, the machine will use extra ink to fill the ink delivery tubes. This is a one-time process that enables high-quality printing.

5 Set the date and time

Follow the LCD instructions to set the date and time.

After setting the date and time, you can set the Firmware Update defaults.

6 Check the print quality

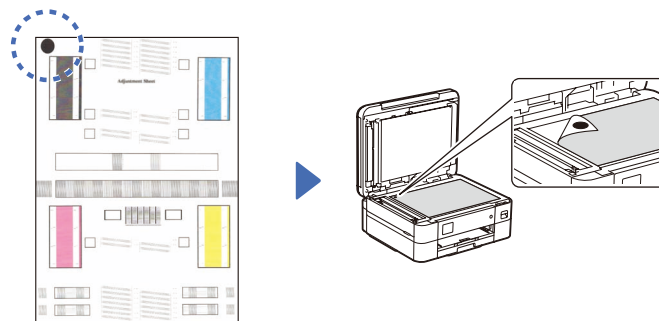


Follow the LCD instructions, and then press [OK] or ►. The machine prints the Print Quality Check Sheet.

Follow the LCD instructions to check the quality of the four color blocks on the sheet, and then start the cleaning procedure if required.

7 Adjust the print alignment (recommended)

To adjust the print alignment before using your machine, press [Start] or ►.



Follow the LCD instructions to print the Adjustment Sheet. The black circle mark is located in the upper left corner of the sheet.

Place the Adjustment Sheet face down on the scanner glass. Make sure the black circle mark is in the upper left corner of the scanner glass.

Follow the LCD instructions and complete adjusting the alignment.

When finished, remove the Adjustment Sheet from the scanner glass.

8 Clear the LCD notifications

If any notifications appear on the LCD, clear them by pressing **OK** or selecting [OK] depending on your model.

9 Select your language (if needed)

- MFC-J1010DW / MFC-J1012DW

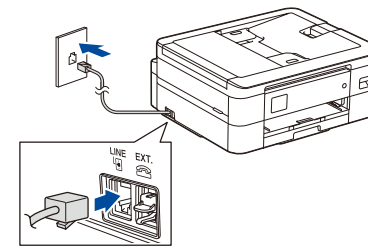
 1. Press **Settings**.
 2. Press ▲ or ▼ to select the following:
 - a. Select [Initial Setup], and then press **OK**.
 - b. Select [Local Language], and then press **OK**.
 - c. Select your language, and then press **OK**.
 3. Press **Stop/Exit**.

- MFC-J1170DW

 1. Press [Settings] > [All Settings] > [Initial Setup] > [Local Language].
 2. Press your language.
 3. Press .

10 Connect the telephone line cord

If you are not using your machine as a fax, go to **13**. For more information on using the fax feature, see the *Online User's Guide*.



11 Select the correct Receive Mode

If you are not using your machine as a fax, go to **13**.

- MFC-J1010DW / MFC-J1012DW

 1. Press **Settings**.
 2. Press ▲ or ▼ to select the following:
 - a. Select [Fax], and then press **OK**.
 - b. Select [Setup Receive], and then press **OK**.
 - c. Select [Receive Mode], and then press **OK**.
 - d. Select your Receive Mode, and then press **OK**.
 3. Press **Stop/Exit**.

- MFC-J1170DW

 1. Press [Settings] > [All Settings] > [Fax] > [Setup Receive] > [Receive Mode].
 2. Press your preferred Receive Mode.
 3. Press .

12 Set your Station ID

If you are not using your machine as a fax, go to **13**.

Store your name and fax number so the machine prints it on all outgoing fax pages. For more information, see *Enter Text on Your Brother Machine* in the *Online User's Guide*.

- MFC-J1010DW / MFC-J1012DW

 1. Press **Settings**.
 2. Press ▲ or ▼ to select the following:
 - a. Select [Initial Setup], and then press **OK**.
 - b. Select [Station ID], and then press **OK**.
 - c. Select [Fax], and then press **OK**.
 3. Enter your fax number (up to 20 digits), and then press **OK**.
 4. Enter your name (up to 20 characters), and then press **OK**.
 5. Press **Stop/Exit**.

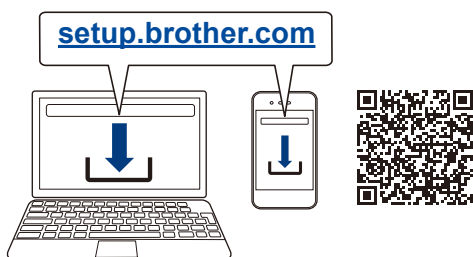
- MFC-J1170DW

 1. Press [Settings] > [All Settings] > [Initial Setup] > [Station ID] > [Fax].
 2. Enter your fax number (up to 20 digits) on the touchscreen and then press [OK].
 3. Press [Name].
 4. Enter your name (up to 20 characters) using the touchscreen, and then press [OK].
 5. Press .

13 Connect your computer or mobile device to your machine

Follow these steps to complete the setup using one of the connection types available on your machine.

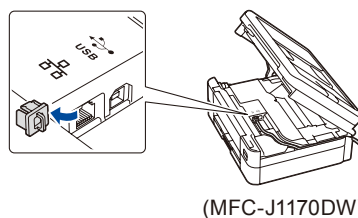
Visit setup.brother.com to download and install Brother software.



Follow the on-screen instructions and prompts.

NOTE

For Wired Network Connection (MFC-J1170DW only) and USB Connection, locate the correct port (based on the cable you are using) inside the machine as shown.



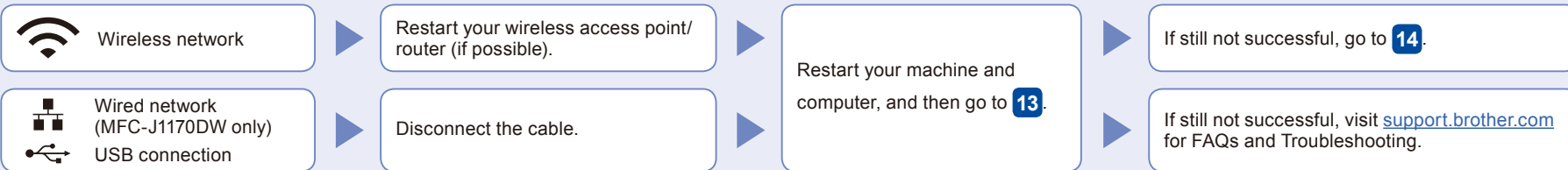
Setup Finished

You can now print and scan using your machine. To check for the latest firmware, visit support.brother.com/up7.

Important Notice for Network Security:

The default password to manage this machine's settings is located on the back of the machine and marked "Pwd". We recommend immediately changing the default password to protect your machine from unauthorized access.

Can't Connect? Check the following:

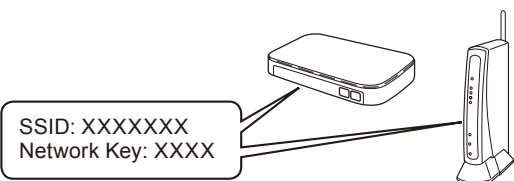


14 Manual wireless setup

If the wireless setup is not successful, try to set up the connection manually.

Find your SSID (Network Name) and Network Key (Password) on your wireless access point/router and write them in the table provided below.

SSID (Network Name)	
Network Key (Password)	



If you cannot find this information, ask your network administrator or wireless access point/router manufacturer.

- MFC-J1010DW / MFC-J1012DW

 1. Go to your machine, and press on the panel.
 2. Press **OK** to select [Find Wi-Fi Network]. The [Enable WLAN?] message appears on the LCD.
 3. Press ► to select Yes.

- MFC-J1170DW

Go to your machine, and press > [Find Wi-Fi Network] > [Yes].

Select the SSID (Network Name) for your access point/router and enter the Network Key (Password). When the wireless setup is successful, the LCD displays [Connected].

If setup is not successful, restart your Brother machine and your wireless access point/router, and repeat **14**.

Go to **13** to install software.

Free Manuals Download Website

<http://myh66.com>

<http://usermanuals.us>

<http://www.somanuals.com>

<http://www.4manuals.cc>

<http://www.manual-lib.com>

<http://www.404manual.com>

<http://www.luxmanual.com>

<http://aubethermostatmanual.com>

Golf course search by state

<http://golfingnear.com>

Email search by domain

<http://emailbydomain.com>

Auto manuals search

<http://auto.somanuals.com>

TV manuals search

<http://tv.somanuals.com>