

# Your washing machine

**Congratulations** - You have opted for a modern, high-quality domestic appliance manufactured by Bosch. This washing machine is distinguished by its economical water and energy consumption. Each machine that leaves our factory has been inspected thoroughly to ensure that it functions properly and is in perfect condition.

For further information and a selection of our products go to our web site: [www.bosch-home.com](http://www.bosch-home.com)

You can find the contact details for your nearest after-sales service here or in the after-sales service directory (*depending on model*), see also Installation Instructions, *page 7*.

- **GB** 0844 8928979 Calls from a BT landline will be charged at up to 3 pence per minute. A call set-up fee of up to 6 pence may apply.

- **IE** 01450 2655 (0.03 € per minute at peak. Off peak 0.0088 € per minute.)

## Environmentally friendly waste disposal

All packaging must be disposed of in accordance with environmental guidelines. This appliance is certified in accordance with European Directive 2012/19/EU on waste electrical and electronic equipment (WEEE). This directive provides the framework for the EU-wide collection and reuse of used appliances.

## Contents

	Page
Intended use	1
Programmes	1
Setting and adjusting the programme	3
Washing	3/4
After washing	4
Individual settings	5
Important information	6
Overview of programmes	7
Safety instructions	8
Consumption values	8
Before washing for the first time/Care	9
Information on the display panel	9
Maintenance	10
What to do if...	11

## Environmental protection/Conservation tips

- Always fill the washing machine with a maximum amount of laundry for the relevant programme.
- Wash normally soiled washing without a pre-wash.
- The selectable temperatures apply to the care labels on the textiles. The temperatures in the machine may deviate from this so that you get the optimum mix of energy-saving and washing results
- Measure the detergent according to the manufacturer's instructions and water hardness.
- If the laundry is then dried in the tumble dryer, select the spin speed according to the instructions of the dryer manufacturer.

## Intended use

- for use in the household only,
- for machine-washable fabrics and hand-washable wool in detergent solution,
- to be operated with cold drinking water and commercially available detergents and care products which are suitable for use in washing machines.
- The washing machine may be operated by children from 8 years of age, by persons who have limited physical, sensory or mental abilities and by persons who have inadequate experience or knowledge, provided they **are supervised or have been instructed** by a responsible person.

- Observe the safety instructions on page 8.
- Do not leave children unattended near the washing machine.
- The washing machine is not to be used by children or persons not familiar with the operating instructions.
- Keep pets away from the washing machine.

Read these instructions and the separate installation instructions before operating the washing machine.

## Programmes

Detailed overview of programmes → *page 7*.

Cottons	hard-wearing fabrics
Rinse	with subsequent spin cycle
Spin/Drain	laundry washed by hand, the rinsing water
Wool	hand/machine-washable textiles
Mixed Load	different types of laundry
Allergy +	hard-wearing fabrics
Delicates/Silk	delicate washable fabrics
Easy-Care	easy-care fabrics

## Preparation

Correct installation according to the separate *Installation instructions*.

### Checking the machine

- Never use a damaged machine.
- Inform the after-sales service.

### Connecting the mains plug

Make sure your hands are dry. Take hold of the plug only.

Observe the safety instructions on page 8.

Do not leave children unattended near the washing machine.

The washing machine is not to be used by children or persons not familiar with the operating instructions.

Keep pets away from the washing machine.

Read these instructions and the separate installation instructions before operating the washing machine.

Observe the safety instructions on page 8.

Do not leave children unattended near the washing machine.

The washing machine is not to be used by children or persons not familiar with the operating instructions.

Keep pets away from the washing machine.

Read these instructions and the separate installation instructions before operating the washing machine.

Observe the safety instructions on page 8.

Do not leave children unattended near the washing machine.

The washing machine is not to be used by children or persons not familiar with the operating instructions.

Keep pets away from the washing machine.

Read these instructions and the separate installation instructions before operating the washing machine.

Observe the safety instructions on page 8.

Do not leave children unattended near the washing machine.

The washing machine is not to be used by children or persons not familiar with the operating instructions.

Keep pets away from the washing machine.

Read these instructions and the separate installation instructions before operating the washing machine.

Observe the safety instructions on page 8.

Do not leave children unattended near the washing machine.

The washing machine is not to be used by children or persons not familiar with the operating instructions.

Keep pets away from the washing machine.

### Sorting and loading laundry

Follow the manufacturer's care information. According to the information on the care labels. According to type, colour, soiling and temperature. Do not exceed the maximum load → *page 7*.

Observe the important information → *page 6*.

Insert large and small items of laundry. Take care not to trap items of laundry between the washing machine door and the rubber seal.

Close the washing machine door.

Measure accordingly: Amount of laundry, soiling, water hardness (ask your water supply company) and manufacturer's instructions.

Pour liquid detergent into the appropriate dispenser and place in the drum.

Measure accordingly: Amount of laundry, soiling, water hardness (ask your water supply company) and manufacturer's instructions.

Pour liquid detergent into the appropriate dispenser and place in the drum.

Measure accordingly: Amount of laundry, soiling, water hardness (ask your water supply company) and manufacturer's instructions.

Pour liquid detergent into the appropriate dispenser and place in the drum.

Measure accordingly: Amount of laundry, soiling, water hardness (ask your water supply company) and manufacturer's instructions.

Pour liquid detergent into the appropriate dispenser and place in the drum.

Measure accordingly: Amount of laundry, soiling, water hardness (ask your water supply company) and manufacturer's instructions.

Pour liquid detergent into the appropriate dispenser and place in the drum.

Measure accordingly: Amount of laundry, soiling, water hardness (ask your water supply company) and manufacturer's instructions.

Pour liquid detergent into the appropriate dispenser and place in the drum.

Measure accordingly: Amount of laundry, soiling, water hardness (ask your water supply company) and manufacturer's instructions.

Pour liquid detergent into the appropriate dispenser and place in the drum.

Measure accordingly: Amount of laundry, soiling, water hardness (ask your water supply company) and manufacturer's instructions.

Pour liquid detergent into the appropriate dispenser and place in the drum.

Measure accordingly: Amount of laundry, soiling, water hardness (ask your water supply company) and manufacturer's instructions.

Pour liquid detergent into the appropriate dispenser and place in the drum.

Measure accordingly: Amount of laundry, soiling, water hardness (ask your water supply company) and manufacturer's instructions.

Pour liquid detergent into the appropriate dispenser and place in the drum.

Measure accordingly: Amount of laundry, soiling, water hardness (ask your water supply company) and manufacturer's instructions.

Pour liquid detergent into the appropriate dispenser and place in the drum.

Measure accordingly: Amount of laundry, soiling, water hardness (ask your water supply company) and manufacturer's instructions.

Pour liquid detergent into the appropriate dispenser and place in the drum.

Measure accordingly: Amount of laundry, soiling, water hardness (ask your water supply company) and manufacturer's instructions.

### Sorting and loading laundry

Follow the manufacturer's care information. According to the information on the care labels. According to type, colour, soiling and temperature. Do not exceed the maximum load → *page 7*.

Observe the important information → *page 6*.

Insert large and small items of laundry. Take care not to trap items of laundry between the washing machine door and the rubber seal.

Close the washing machine door.

Measure accordingly: Amount of laundry, soiling, water hardness (ask your water supply company) and manufacturer's instructions.

Pour liquid detergent into the appropriate dispenser and place in the drum.

Measure accordingly: Amount of laundry, soiling, water hardness (ask your water supply company) and manufacturer's instructions.

Pour liquid detergent into the appropriate dispenser and place in the drum.

Measure accordingly: Amount of laundry, soiling, water hardness (ask your water supply company) and manufacturer's instructions.

Pour liquid detergent into the appropriate dispenser and place in the drum.

Measure accordingly: Amount of laundry, soiling, water hardness (ask your water supply company) and manufacturer's instructions.

Pour liquid detergent into the appropriate dispenser and place in the drum.

Measure accordingly: Amount of laundry, soiling, water hardness (ask your water supply company) and manufacturer's instructions.

Pour liquid detergent into the appropriate dispenser and place in the drum.

Measure accordingly: Amount of laundry, soiling, water hardness (ask your water supply company) and manufacturer's instructions.

Pour liquid detergent into the appropriate dispenser and place in the drum.

Measure accordingly: Amount of laundry, soiling, water hardness (ask your water supply company) and manufacturer's instructions.

Pour liquid detergent into the appropriate dispenser and place in the drum.

Measure accordingly: Amount of laundry, soiling, water hardness (ask your water supply company) and manufacturer's instructions.

Pour liquid detergent into the appropriate dispenser and place in the drum.

Measure accordingly: Amount of laundry, soiling, water hardness (ask your water supply company) and manufacturer's instructions.

Pour liquid detergent into the appropriate dispenser and place in the drum.

Measure accordingly: Amount of laundry, soiling, water hardness (ask your water supply company) and manufacturer's instructions.

Pour liquid detergent into the appropriate dispenser and place in the drum.

Measure accordingly: Amount of laundry, soiling, water hardness (ask your water supply company) and manufacturer's instructions.

Pour liquid detergent into the appropriate dispenser and place in the drum.

Measure accordingly: Amount of laundry, soiling, water hardness (ask your water supply company) and manufacturer's instructions.

Pour liquid detergent into the appropriate dispenser and place in the drum.

Measure accordingly: Amount of laundry, soiling, water hardness (ask your water supply company) and manufacturer's instructions.

## Washing

### Removing the washing

Open the washing machine door and remove the washing.

Remove any foreign objects - risk of rusting. Leave the washing machine door and detergent drawer open so that any residual water can evaporate.

### Turning the tap off

Not required for AquaStop models → *Hinweise Installation Instructions, page 7*.

### Switching off

Turn the programme selector to **Off**.

Turn the programme selector to **Off**.

Turn the programme selector to **Off**.

Turn the programme selector to **Off**.

Turn the programme selector to **Off**.

Turn the programme selector to **Off**.

Turn the programme selector to **Off**.

Turn the programme selector to **Off**.

Turn the programme selector to **Off**.

Turn the programme selector to **Off**.

Turn the programme selector to **Off**.

Turn the programme selector to **Off**.

Turn the programme selector to **Off**.

Turn the programme selector to **Off**.

Turn the programme selector to **Off**.

Turn the programme selector to **Off**.

Turn the programme selector to **Off**.

Turn the programme selector to **Off**.

Turn the programme selector to **Off**.

Turn the programme selector to **Off**.

Turn the programme selector to **Off**.

Turn the programme selector to **Off**.

Turn the programme selector to **Off**.

Turn the programme selector to **Off**.

## Washing

### End of programme when ...

... **End** appears on the display panel.

### Interrupting the programme

Programmes at high temperatures:

- Cool washing: Select **Rinse**.
- Select **Start**.

Programmes at lower temperatures:

- Select **Spin/Drain**.
- Select **Start/Pause**.

### Changing the programme, if ...

... you have selected the wrong programme by mistake:

- Reselect the programme.
- Select **Start/Pause**. The new programme starts from the beginning.

Reselect the programme.

Select **Start/Pause**. The new programme starts from the beginning.

Reselect the programme.

Select **Start/Pause**. The new programme starts from the beginning.

Reselect the programme.

Select **Start/Pause**. The new programme starts from the beginning.

Reselect the programme.

Select **Start/Pause**. The new programme starts from the beginning.

Reselect the programme.

Select **Start/Pause**. The new programme starts from the beginning.

Reselect the programme.

Select **Start/Pause**. The new programme starts from the beginning.

Reselect the programme.

Select **Start/Pause**. The new programme starts from the beginning.

Reselect the programme.

Select **Start/Pause**. The new programme starts from the beginning.

Reselect the programme.

Select **Start/Pause**. The new programme starts from the beginning.

Reselect the programme.

Select **Start/Pause**. The new programme starts from the beginning.

Reselect the programme.

Select **Start/Pause**. The new programme starts from the beginning.

Reselect the programme.

## Individual settings

### Additional functions

→ and overview of programmes, see *page 7*.

Speed Perfect For washing in a shorter time a washing outcome comparable to that of the standard programme. Maximum load → Overview of programmes, *page 7*.

Prewash For heavy soiled, hard-wearing washing, e.g. made of cotton or linen.

### Start/Pause

For starting the programme.

### Childproof lock

on the display panel You can lock the washing machine to prevent the functions you have set from being changed inadvertently.

**ON/OFF:** after the start/end of the programme, press and hold the Start/Pause button for approx. 5 seconds.

Note: The childproof lock can remain activated until you wish to start the next programme, even after switching off the machine.

Then you can deactivate the childproof lock before starting the programme and activate it again as necessary once the programme has started.

Then you can deactivate the childproof lock before starting the programme and activate it again as necessary once the programme has started.

Then you can deactivate the childproof lock before starting the programme and activate it again as necessary once the programme has started.

Then you can deactivate the childproof lock before starting the programme and activate it again as necessary once the programme has started.

Then you can deactivate the childproof lock before starting the programme and activate it again as necessary once the programme has started.

Then you can deactivate the childproof lock before starting the programme and activate it again as necessary once the programme has started.

Then you can deactivate the childproof lock before starting the programme and activate it again as necessary once the programme has started.

Then you can deactivate the childproof lock before starting the programme and activate it again as necessary once the programme has started.

Then you can deactivate the childproof lock before starting the programme and activate it again as necessary once the programme has started.

Then you can deactivate the childproof lock before starting the programme and activate it again as necessary once the programme has started.

Then you can deactivate the childproof lock before starting the programme and activate it again as necessary once the programme has started.

Then you can deactivate the childproof lock before starting the programme and activate it again as necessary once the programme has started.

Then you can deactivate the childproof lock before starting the programme and activate it again as necessary once the programme has started.

Then you can deactivate the childproof lock before starting the programme and activate it again as necessary once the programme has started.

Then you can deactivate the childproof lock before starting the programme and activate it again as necessary once the programme has started.

Then you can deactivate the childproof lock before starting the programme and activate it again as necessary once the programme has started.

Then you can deactivate the childproof lock before starting the programme and activate it again as necessary once the programme has started.

Then you can deactivate the childproof lock before starting the programme and activate it again as necessary once the programme has started.

Then you can deactivate the childproof lock before starting the programme and activate it again as necessary once the programme has started.

Then you can deactivate the childproof lock before starting the programme and activate it again as necessary once the programme has started.

## Individual settings

### Additional functions

→ and overview of programmes, see *page 7*.

Speed Perfect For washing in a shorter time a washing outcome comparable to that of the standard programme. Maximum load → Overview of programmes, *page 7*.

Prewash For heavy soiled, hard-wearing washing, e.g. made of cotton or linen.

### Start/Pause

For starting the programme.

### Childproof lock

on the display panel You can lock the washing machine to prevent the functions you have set from being changed inadvertently.

**ON/OFF:** after the start/end of the programme, press and hold the Start/Pause button for approx. 5 seconds.

Note: The childproof lock can remain activated until you wish to start the next programme, even after switching off the machine.

Then you can deactivate the childproof lock before starting the programme and activate it again as necessary once the programme has started.

Then you can deactivate the childproof lock before starting the programme and activate it again as necessary once the programme has started.

Then you can deactivate the childproof lock before starting the programme and activate it again as necessary once the programme has started.

Then you can deactivate the childproof lock before starting the programme and activate it again as necessary once the programme has started.

Then you can deactivate the childproof lock before starting the programme and activate it again as necessary once the programme has started.

Programmes	°C	max.	Type of laundry	Additional functions, information
Cottons	20, 30, 40, 60, 90 °C	6 kg / 3,5 kg*	Hard-wearing fabrics, heat-resistant fabrics made of cotton or linen	Speed Perfect*, Prewash
Allergy+	60 °C	6 kg		Speed Perfect*, Prewash
Cottons (Eco)	40, 60 °C	3 kg	Easy-care fabrics made of cotton, linen, synthetic fibres or blended fabrics	Speed Perfect*, Prewash
Easy-Care	30, 40 °C	2,5 kg		Speed Perfect, Prewash
Mixed Load	40 °C	2 kg	For delicate, washable fabrics, e.g. made of silk, satin, synthetic fibres or blended fabrics (e.g. curtains)	Speed Perfect, Prewash, No spin between rinse cycles
Delicates/Silk	40 °C		Hand- or machine-washable fabrics made of wool or containing wool	Particularly gentle wash programme to prevent shrinkage of laundry. Longer programme breaks (fabrics rest in the detergent solution)
Wool	40 °C			Rinse, Spin/Drain

Robert Bosch Hausgeräte GmbH  
Carl-Wery-Str. 34  
81739 München / Germany

WAB28161GB

9404 / 9000951602

\* Reduced load when using the Speed Perfect option.

† Programmes without prewash - add detergent to compartment II.

‡ programmes with prewash - distribute the detergent between compartments I and II.

## Safety instructions

- Read the instruction manual and installation instructions and all other information enclosed with the washing machine and act accordingly.
- Retain the documents for subsequent use.

**Risk of electric shock**

- Never pull the cable to disconnect the mains plug.
- Never insert/disconnect the mains plug with damp hands.

**Danger to life**

For worn-out appliances:

- Disconnect the mains plug.
- Sever the mains cable and discard along with the plug.
- Destroy the lock on the washing machine door. This will prevent children from locking themselves in and risking their lives.

**Danger of suffocation**

- Keep packaging, film and packaging parts out of the reach of children.

**Risk of poisoning**

**Risk of explosion**

- Keep detergents and care products out of the reach of children.
- Items of laundry pretreated with cleaning agents containing solvents, e.g. stain remover/cleaning solvent may cause an explosion after being loaded into the washing machine. Rinse items of laundry thoroughly by hand beforehand.

**Risk of injury**

- The washing machine door can become very hot.
- Be careful when draining hot detergent solution.
- Do not climb onto the washing machine.
- Do not lean on the open washing machine door.
- Do not reach into the drum if it is still rotating.
- Be careful when opening the detergent drawer while the machine is in operation.

## Consumption values

Programme	Load	Energy***	Water***	Programme duration (h)***
Cottons 20 °C	6 kg	0.30 kWh	68 l	2 ¼ h
Cottons 40 °C*	6 kg	0.95 kWh	68 l	2 ¼ h
Cottons 60 °C	6 kg	1.60 kWh	68 l	2 ¼ h
Cottons 90 °C	6 kg	2.45 kWh	76 l	2 ¼ h
Easy-Care 40 °C*	3 kg	0.70 kWh	46 l	1 ¾ h
Mixed Load 40 °C	2,5 kg	0.40 kWh	44 l	1 h
Delicates/Silk 30 °C	2 kg	0.30 kWh	37 l	¾ h
Wool 30 °C	2 kg	0.20 kWh	43 l	¾ h

\* Programme setting for testing in accordance with currently applicable EN60456 standard. Note on comparative tests: When testing the test programmes, wash the specified load using the maximum spin speed.

Programme	Load	Annual energy consumption	Annual water consumption
Cottons   (Eco)**	6/3 kg	153 kWh	10560 l

\*\* Programme settings for testing and energy labelling in accordance with EU directive 2010/30/EU with cold water (15 °C).

\*\*\* The values may deviate from the specified values depending on water pressure, water hardness, and inlet temperature, ambient temperature, type, amount and level of laundry soiling, detergent used, fluctuations in the power supply and selection of options.

## Before washing for the first time

**i** Do not load any laundry into the machine. Turn on the tap. Add the following to compartment II:

- approx. 1 litre water
- detergent (dosage according to the manufacturer's instructions for light soiling and the appropriate degree of water hardness)

Set the programme selector to **Cottons 60 °C** and select **Start/Pause**. At the end of the programme, turn the programme selector to **Off**.

## Care

**i** **Machine housing, control panel**

- Remove detergent residue immediately.
- Wipe off with a soft, damp cloth.
- Do not clean with a jet of water.

**Hand** **Cleaning the detergent drawer ...**

... if it contains detergent or fabric softener residues.

- Pull out, press insert down, remove drawer completely.
- To remove the insert: press the insert upwards from below with your finger.
- Clean the detergent dispenser tray and insert with water and a brush and dry it.
- Attach the insert and engage (connect the cylinder to the guide pin).
- Push in the detergent drawer.

**i** Leave the detergent drawer open so that any residual water can evaporate.

**i** **Drum**

Leave the washing machine door open so that the drum can dry out. Rust stains - use chlorine-free cleaning agent, not steel wool.

**i** **Descaling** *Ensure there is no laundry in the machine*

This should not be necessary if the correct detergent dosage has been used. If it is necessary, however, proceed according to the descaling agent manufacturer's instructions. Suitable descalers can be obtained via our website or from our after-sales service (→ page 1).

## Information on the display panel depending on model

	Turn the (cold water) tap on fully; supply hose kinked/trapped; water pressure too low; service, clean the filter → page 10,
	Detergent solution pump blocked; service, clean the detergent solution pump → page 10. Drainage hose/waste pipe blocked; service, clean the drainage hose at the siphon → page 10.
	Water in the base tub, appliance leaking. Turn off the tap. Call the after-sales service.
	Childproof lock active; Deactivating → page 5.
<b>Other displays</b>	Switch off the appliance, wait for 5 seconds and switch it back on again. If the display appears again, call the after-sales service.

## Maintenance

**Hand** **Detergent solution pump**

Turn the programme selector to **Off** and disconnect the mains plug.

- Remove the service flap for detergent solution pump.
- Carefully unscrew the pump cover (residual water).
- Clean the interior, pump cover thread and pump housing (the impeller in the detergent solution pump must rotate).
- Replace the pump cover and screw it tightly.
- Place the service flap back.

To prevent unused detergent from flowing straight into the drain during the next wash: Pour 1 litre of water into compartment II and start the Spin/Drain programme.

**Hand** **Drainage hose at the siphon**

Turn the programme selector to **Off** and disconnect the mains plug.

- Loosen the hose clamp, carefully remove the drainage hose (residual water).
- Clean the drainage hose and siphon connecting piece.
- Reattach the drainage hose and secure the connection with the hose clamp.

**Hand** **Filter in the water supply**

**Risk of electric shock**  
*Do not immerse the HydroSafe safety device in water (contains an electric valve).*

Reduce the water pressure in the supply hose:

- Turn off the tap.
- Select any programme (except Spin/Drain).
- Select **Start/Pause** Let the programme run for approximately 40 seconds.
- Turn the programme selector to **Off**. Disconnect the mains plug.
- Clean the filter: Disconnect the hose from the tap. Clean the filter using a small brush.

**and/or** for Standard and Aqua-Secure models:

Remove the hose on the rear of the appliance, Remove the filter with pliers and clean.


- Connect the hose and check the leak tightness of the connection points.


## What to do if ...

	Water is leaking out.	Attach/replace the drainage hose correctly.	Tighten the screw connection of the supply hose.
	No water supply.	<b>Start/Pause</b> not selected?	Tap not turned on?
	Detergent not dispensed.	Filter blocked? Clean the filter → page 10.	Supply hose kinked or trapped?
	Washing machine door cannot be opened.	Safety function active. Wait approx. 2 minutes.	
	Programme does not start.	<b>Start/Pause</b> selected?	Washing machine door closed?
	Detergent solution is not drained.	Clean the detergent solution pump → page 10.	Clean the waste pipe and/or drainage hose.
	Water not visible in the drum.	Not a fault - water below the visible area.	
	Unsatisfactory spin result. Laundry wet/too damp.	Not a fault - the unbalanced-load detection system has cancelled the spin cycle because of uneven distribution of the laundry. Distribute small and large items of laundry evenly inside the drum.	Selected speed too low? → page 5.
	Spin cycle performed several times.	Not a fault - unbalanced load detection system adjusts the imbalance.	
	Residual water in the compartment  for care products.	Not a fault - the action of the care product is not affected.	Clean the insert if necessary → page 9.
	Odour formation in the washing machine.	Run programme <b>Cottons 90 °C</b> without laundry. Use standard detergent.	
	Foam escaping from the detergent drawer.	Too much detergent used? If foam is escaping from the detergent drawer: Mix 1 tablespoon of fabric softener with ½ litre of water and pour into compartment II (not with outdoor or down fabrics). Reduce the detergent dosage for the next wash cycle.	
	Intense noise formation, vibrations and "wanderrung" during the spin cycle.	Are the appliance feet fixed? Secure the appliance feet → Installation instructions.	Transportation safety devices removed? Remove the transportation safety devices → Installation instructions.
	Indicator lamps do not function during operation.	Power cut? Fuses triggered? Reset/change the fuses.	If the fault occurs repeatedly, call the after-sales service.
	Programme sequence longer than usual.	Not a fault - unbalanced load detection system adjusts imbalance by repeatedly distributing the laundry.	Not a fault - foam detection system active - adds an additional rinse cycle.
	Detergent residues on the laundry.	Occasionally, phosphate-free detergents contain water-insoluble residues.	Select <b>Rinse</b> or brush the laundry after washing.


If you cannot correct a fault yourself or a repair is required:

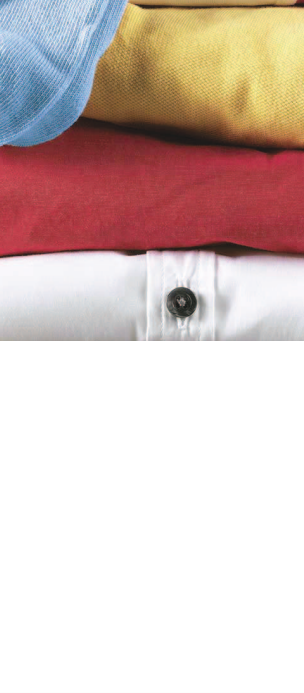
- Turn the programme selector to **Off** and remove the mains plug from the socket.
- Turn off the water supply and call the after-sales service → *Installation instructions*.





Register your new Bosch now:  
[www.bosch-home.com/welcome](http://www.bosch-home.com/welcome)





### Washing machine WAB28161GB

en operating instructions

# Your washing machine

**Congratulations** - You have opted for a modern, high-quality domestic appliance manufactured by Bosch. This washing machine is distinguished by its economical water and energy consumption. Each machine that leaves our factory has been inspected thoroughly to ensure that it functions properly and is in perfect condition.

For further information and a selection of our products go to our web site: [www.bosch-home.com](http://www.bosch-home.com)

You can find the contact details for your nearest after-sales service here or in the after-sales service directory (*depending on model*), see also Installation Instructions, *page 7*.

- **GB** 0844 8928979 Calls from a BT landline will be charged at up to 3 pence per minute. A call set-up fee of up to 6 pence may apply.
- **IE** 01450 2655 (0.03 € per minute at peak. Off peak 0.0088 € per minute.)

## Environmentally friendly waste disposal



All packaging must be disposed of in accordance with environmental guidelines. This appliance is certified in accordance with European Directive 2012/19/EU on waste electrical and electronic equipment (WEEE). This directive provides the framework for the EU-wide collection and reuse of used appliances.

## Contents

	Page
Intended use .....	1
Programmes .....	1
Setting and adjusting the programme .....	3
Washing .....	3/4
After washing .....	4
Individual settings .....	5
Important information .....	6
Overview of programmes .....	7
Safety instructions .....	8
Consumption values .....	8
Before washing for the first time/Care .....	9
Information on the display panel .....	9
Maintenance .....	10
What to do if.....	11



## Environmental protection/Conservation tips

- Always fill the washing machine with a maximum amount of laundry for the relevant programme.
- Wash normally soiled washing without a pre-wash.
- The selectable temperatures apply to the care labels on the textiles. The temperatures in the machine may deviate from this so that you get the optimum mix of energy-saving and washing results
- Measure the detergent according to the manufacturer's instructions and water hardness.
- If the laundry is then dried in the tumble dryer, select the spin speed according to the instructions of the dryer manufacturer.

## Intended use

- for use in the household only,
- for machine-washable fabrics and hand-washable wool in detergent solution,
- to be operated with cold drinking water and commercially available detergents and care products which are suitable for use in washing machines.
- The washing machine may be operated by children from 8 years of age, by persons who have limited physical, sensory or mental abilities and by persons who have inadequate experience or knowledge, provided they **are supervised or have been instructed** by a responsible person.



- Observe the safety instructions on page 8.
- Do not leave children unattended near the washing machine.
- The washing machine is not to be used by children or persons not familiar with the operating instructions.
- Keep pets away from the washing machine.



Read these instructions and the separate installation instructions before operating the washing machine.

## Programmes

Detailed overview of programmes → *page 7*.

Cottons	hard-wearing fabrics
Rinse	with subsequent spin cycle
Spin/Drain	laundry washed by hand, the rinsing water
Wool	hand/machine-washable textiles
Mixed Load	different types of laundry
Allergy +	hard-wearing fabrics
Delicates/Silk	delicate washable fabrics
Easy-Care	easy-care fabrics

## Preparation



Correct installation according to the separate Installation instructions.



## Checking the machine

- Never use a damaged machine.
- Inform the after-sales service.



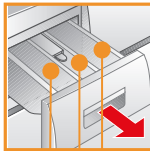
## Connecting the mains plug



Make sure your hands are dry. Take hold of the plug only.



## Turning the tap on



**Compartment II:** Detergent for the main wash, water softener, bleach, stain remover

**Compartment** ☼: Fabric softener, starch

**Compartment I:** Detergent for pre-wash

Display panel	Additional function	Start/Pause	Program
<p>1400</p>	<p>Speed Perfect</p> <p>Pre-wash</p>	<p>Start/Pause</p>	<p>Easy-Care</p> <p>Allergy+ 60°</p> <p>Mixed Load 40°</p> <p>Delicates/Silk 30°</p> <p>Wool 30°</p> <p>Spin/Drain</p> <p>Rinse</p>
<p>--- 1400*</p>			Select the spin speed (* depending on the model) or --- (Rinse stop (Spülstop) = no final spin, laundry soaks in rinsing water, display panel ---)
<p>1h - 24h</p>			Programme end after
<p>Status indicators</p> <p>Wash, Rinse, Spin, End</p> <p>Childproof lock</p>			Programme status indicators: Wash, rinse, spin, programme duration or end Childproof lock → <i>page 5</i>

**Before washing for the first time**  
Wash once without any laundry → page 9.

### Sorting and loading laundry

Follow the manufacturer's care information. According to the information on the care labels. According to type, colour, soiling and temperature. Do not exceed the maximum load → page 7.

Observe the important information → page 6. Insert large and small items of laundry.

Close the washing machine door. Take care not to trap items of laundry between the washing machine door and the rubber seal.

### Add detergent and care products

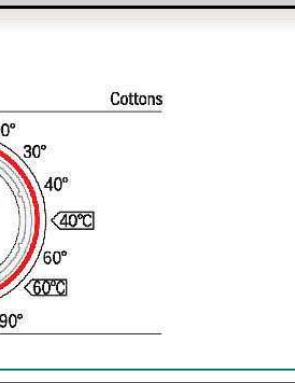
Measure accordingly: Amount of laundry, soiling, water hardness (ask your water supply company) and manufacturer's instructions. Pour liquid detergent into the appropriate dispenser and place in the drum.

**i** Dilute thick fabric softener and fabric conditioner with water. This prevents blockages.

### Setting and adjusting programmes

Additional function → Individual settings, page 5.

Programme selector

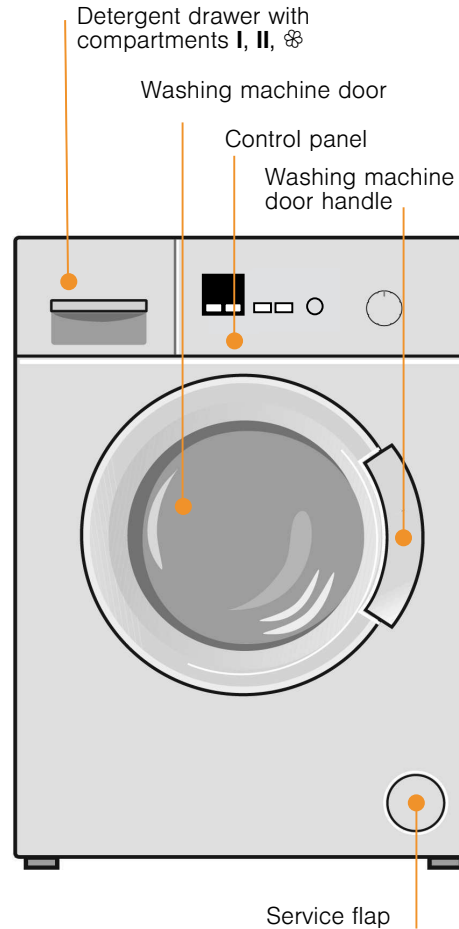


**Select Start/Pause**

works in the last

**i** Programme selector for switching the machine on and off and for selecting the programme. Can be turned in either direction.

## Washing



1

2



### Removing the washing

Open the washing machine door and remove the washing.

**i** – Remove any foreign objects - risk of rusting.  
– Leave the washing machine door and detergent drawer open so that any residual water can evaporate.

### Turning the tap off

Not required for AquaStop models → *Hinweise Installation Instructions, page 7.*

### Switching off

Turn the programme selector to **Off**.

### End of programme when ...

... **End** appears on the display panel.

### Interrupting the programme

Programmes at high temperatures:

- Cool washing: Select **Rinse**.
- Select **Start**.

Programmes at lower temperatures:

- Select **Spin/Drain**.
- Select **Start/Pause**.

### Changing the programme, if ...

... you have selected the wrong programme by mistake:  
– Reselect the programme.  
– Select **Start/Pause**. The new programme starts from the beginning.

## Washing

# Individual settings

## Additional functions → and overview of programmes, see page 7.

Speed Perfect For washing in a shorter time a washing outcome comparable to that of the standard programme. Maximum load -> Overview of programmes, page 7.

Prewash For heavy soiled, hard-wearing washing, e.g. made of cotton or linen.

## Start/Pause

For starting the programme.

## Childproof lock

 You can lock the washing machine to prevent the functions you have set from being changed inadvertently.

**ON/OFF:** after the start/end of the programme, press and hold the Start/Pause button for approx. 5 seconds.

Note: The childproof lock can remain activated until you wish to start the next programme, even after switching off the machine.

Then you can deactivate the childproof lock before starting the programme and activate it again as necessary once the programme has started.



# Important information



## Protecting the washing and the machine


- When measuring the amount of all detergents/additives and cleaning agents, always check the manufacturer's instructions.
- Empty pockets.
- Look out for metal items (paperclips, etc.).
- Wash delicates in a laundry bag (tights, curtains, underwired bras).
- Fasten zips, do up any buttons.
- Brush sand out of pockets and collars.
- Remove curtain fittings or place in the laundry bag.



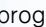
## Washing with varying degrees of soiling

Wash new items of clothing separately.

light  Do not pre-wash.

If required, pretreat stains. Select programme **Cottons**  (*Eco*).

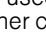
heavy 

Load less washing.  
Select programme **Cottons**  (*Eco*).



## Starching

Washing must not be treated with fabric softener

Starching is possible in all wash programmes if liquid starch is used. Pour the starch in accordance with the manufacturer's instructions into fabric softener compartment  (rinse first if necessary).



## Dyeing/bleaching

Dye should only be used in normal household quantities. Salt may damage stainless steel. Always follow the dye manufacturer's instructions! Do **not** use the washing machine for bleaching clothes!

# Overview of programmes → Refer to the table of consumption values on page 8 and notes on page 6.

## Type of laundry



## Additional functions; information

max.

Programmes	°C	max.	Type of laundry	Additional functions; information
<b>Cottons</b>	20, 30, 40, 60, 90 °C	6 kg / 3,5 kg*	Hard-wearing fabrics, heat-resistant fabrics made of cotton or linen	Speed Perfect*, Prewash
<b>Allergy+</b>	60 °C			
<b>Cottons (Eco)</b>	40°C	6 kg		Speed Perfect*, Prewash
<b>Easy-Care</b>	30, 40 °C	3 kg	Easy-care fabrics made of cotton, linen, synthetic fibres or blended fabrics	Speed Perfect, Prewash
<b>Mixed Load</b>	40 °C	2,5 kg		Speed Perfect, Prewash
<b>Delicates/Silk</b>	40 °C		For delicate, washable fabrics; e.g. made of silk, satin, synthetic fibres or blended fabrics (e.g. curtains)	Speed Perfect, Prewash; No spin between rinse cycles
<b>Wool</b>	40 °C	2 kg	Hand- or machine-washable fabrics made of wool or containing wool	Particularly gentle wash programme to prevent shrinkage of laundry. Longer programme breaks (fabrics rest in the detergent solution)

## Additional programmes

## Rinse, Spin/Drain

\* Reduced load when using the Speed Perfect option.

i Programmes without prewash - add detergent to compartment **II**, programmes with prewash - distribute the detergent between compartments **I** and **II**.

9404 / 9000951602

WAB28161GB

Robert Bosch Hausgeräte GmbH  
Carl-Wery-Str. 34  
81739 München / Germany



## Safety instructions

- Read the instruction manual and installation instructions and all other information enclosed with the washing machine and act accordingly.
- Retain the documents for subsequent use.

### Risk of electric shock

- Never pull the cable to disconnect the mains plug.
- Never insert/disconnect the mains plug with damp hands.

### Danger to life

- For worn-out appliances:
- Disconnect the mains plug.
  - Sever the mains cable and discard along with the plug.
  - Destroy the lock on the washing machine door. This will prevent children from locking themselves in and risking their lives.

### Danger of suffocation

- Keep packaging, film and packaging parts out of the reach of children.

### Risk of poisoning

- Keep detergents and care products out of the reach of children.

### Risk of explosion

- Items of laundry pretreated with cleaning agents containing solvents, e.g. stain remover/cleaning solvent may cause an explosion after being loaded into the washing machine. Rinse items of laundry thoroughly by hand beforehand.

### Risk of injury

- The washing machine door can become very hot.
- Be careful when draining hot detergent solution.
- Do not climb onto the washing machine.
- Do not lean on the open washing machine door.
- Do not reach into the drum if it is still rotating.
- Be careful when opening the detergent drawer while the machine is in operation.

## Consumption values

Programme	Load	Energy***	Water***	Programme duration (h)***
Cottons 20 °C	6 kg	0.30 kWh	68 l	2 ¼ h
Cottons 40 °C*	6 kg	0.95 kWh	68 l	2 ¼ h
Cottons 60 °C	6 kg	1.60 kWh	68 l	2 ¼ h
Cottons 90 °C	6 kg	2.45 kWh	76 l	2 ¼ h
Easy-Care 40 °C*	3 kg	0.70 kWh	46 l	1 ¾ h
Mixed Load 40 °C	2,5 kg	0.40 kWh	44 l	1 h
Delicates/Silk 30 °C	2 kg	0.30 kWh	37 l	¾ h
Wool 30 °C	2 kg	0.20 kWh	43 l	¾ h

\* Programme setting for testing in accordance with currently applicable EN60456 standard.  
Note on comparative tests: When testing the test programmes, wash the specified load using the maximum spin speed.

Programme	Load	Annual energy consumption	Annual water consumption
Cottons   (Eco)**	6/3 kg	153 kWh	10560 l

\*\* Programme settings for testing and energy labelling in accordance with EU directive 2010/30/EU with cold water (15 °C).

\*\*\* The values may deviate from the specified values depending on water pressure, water hardness, and inlet temperature, ambient temperature, type, amount and level of laundry soiling, detergent used, fluctuations in the power supply and selection of options.

## Before washing for the first time

- i** Do not load any laundry into the machine. Turn on the tap. Add the following to compartment II:
    - approx. 1 litre water
    - detergent (dosage according to the manufacturer's instructions for light soiling and the appropriate degree of water hardness)
- Set the programme selector to **Cottons 60 °C** and select **Start/Pause**. At the end of the programme, turn the programme selector to **Off**.

## Care



- **Risk of electric shock.** Disconnect the mains plug.
- **Risk of explosion.** No solvents.

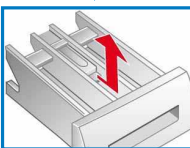
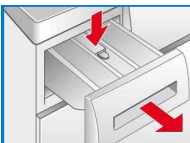
### Machine housing, control panel

- Remove detergent residue immediately.
- Wipe off with a soft, damp cloth.
- Do not clean with a jet of water.

### Cleaning the detergent drawer ...

... if it contains detergent or fabric softener residues.

1. Pull out, press insert down, remove drawer completely.
2. To remove the insert: press the insert upwards from below with your finger.
3. Clean the detergent dispenser tray and insert with water and a brush and dry it.
4. Attach the insert and engage (connect the cylinder to the guide pin).
5. Push in the detergent drawer.



- i** Leave the detergent drawer open so that any residual water can evaporate.

### Drum

Leave the washing machine door open so that the drum can dry out. Rust stains - use chlorine-free cleaning agent, not steel wool.

### Descaling

Ensure there is no laundry in the machine

This should not be necessary if the correct detergent dosage has been used. If it is necessary, however, proceed according to the descaling agent manufacturer's instructions. Suitable descalers can be obtained via our website or from our after-sales service (→ page 1).

## Information on the display panel depending on model

<b>E: 17</b>	Turn the (cold water) tap on fully; supply hose kinked/trapped; water pressure too low; service, clean the filter → page 10,
<b>E: 18</b>	Detergent solution pump blocked; service, clean the detergent solution pump → page 10. Drainage hose/waste pipe blocked; service, clean the drainage hose at the siphon → page 10.
<b>E: 23</b>	Water in the base tub, appliance leaking. Turn off the tap. Call the after-sales service.
	Childproof lock active; Deactivating → page 5.
<b>Other displays</b>	Switch off the appliance, wait for 5 seconds and switch it back on again. If the display appears again, call the after-sales service.

## Maintenance

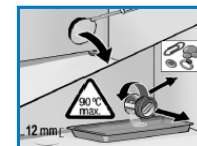


- **Risk of scalding.** Allow the detergent solution to cool down.
- Turn off the tap.

### Detergent solution pump

Turn the programme selector to **Off** and disconnect the mains plug.

1. Remove the service flap for detergent solution pump.
2. Carefully unscrew the pump cover (residual water).
3. Clean the interior, pump cover thread and pump housing (the impeller in the detergent solution pump must rotate).
4. Replace the pump cover and screw it tightly.
5. Place the service flap back.

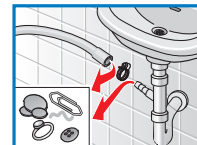


To prevent unused detergent from flowing straight into the drain during the next wash: Pour 1 litre of water into compartment II and start the Spin/Drain programme.

### Drainage hose at the siphon

Turn the programme selector to **Off** and disconnect the mains plug.

1. Loosen the hose clamp, carefully remove the drainage hose (residual water).
2. Clean the drainage hose and siphon connecting piece.
3. Reattach the drainage hose and secure the connection with the hose clamp.



### Filter in the water supply



#### Risk of electric shock

Do not immerse the HydroSafe safety device in water (contains an electric valve).

Reduce the water pressure in the supply hose:

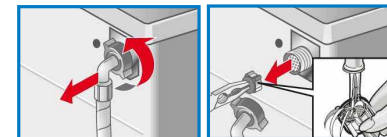
1. Turn off the tap.
2. Select any programme (except **Spin/Drain**).
3. Select **Start/Pause** Let the programme run for approximately 40 seconds.
4. Turn the programme selector to **Off**. Disconnect the mains plug.
5. Clean the filter:  
Disconnect the hose from the tap.  
Clean the filter using a small brush.



**and/or** for Standard and Aqua-Secure models:

Remove the hose on the rear of the appliance, Remove the filter with pliers and clean.

6. Connect the hose and check the leak tightness of the connection points.



## What to do if ...

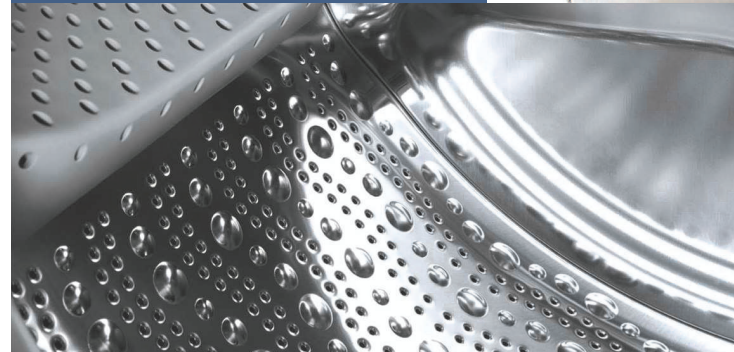
● Water is leaking out.	<ul style="list-style-type: none"> <li>– Attach/replace the drainage hose correctly.</li> <li>– Tighten the screw connection of the supply hose.</li> </ul>
● No water supply. Detergent not dispensed.	<ul style="list-style-type: none"> <li>– <b>Start/Pause</b> not selected?</li> <li>– Tap not turned on?</li> <li>– Filter blocked? Clean the filter → <i>page 10</i>.</li> <li>– Supply hose kinked or trapped?</li> </ul>
● Washing machine door cannot be opened.	<ul style="list-style-type: none"> <li>– Safety function active. Wait approx. 2 minutes.</li> </ul>
● Programme does not start.	<ul style="list-style-type: none"> <li>– <b>Start/Pause</b> selected?</li> <li>– Washing machine door closed?</li> </ul>
● Detergent solution is not drained.	<ul style="list-style-type: none"> <li>– Clean the detergent solution pump → <i>page 10</i>.</li> <li>– Clean the waste pipe and/or drainage hose.</li> </ul>
● Water not visible in the drum.	<ul style="list-style-type: none"> <li>– Not a fault - water below the visible area.</li> </ul>
● Unsatisfactory spin result. Laundry wet/too damp.	<ul style="list-style-type: none"> <li>– Not a fault - the unbalanced-load detection system has cancelled the spin cycle because of uneven distribution of the laundry. Distribute small and large items of laundry evenly inside the drum.</li> <li>– Selected speed too low? → <i>page 5</i>.</li> </ul>
● Spin cycle performed several times.	<ul style="list-style-type: none"> <li>– Not a fault - unbalanced load detection system adjusts the imbalance.</li> </ul>
● Residual water in the compartment ☼ for care products.	<ul style="list-style-type: none"> <li>– Not a fault - the action of the care product is not affected.</li> <li>– Clean the insert if necessary → <i>page 9</i>.</li> </ul>
● Odour formation in the washing machine.	<ul style="list-style-type: none"> <li>– Run programme <b>Cottons 90 °C</b> without laundry. Use standard detergent.</li> </ul>
● Foam escaping from the detergent drawer.	<ul style="list-style-type: none"> <li>– Too much detergent used? If foam is escaping from the detergent drawer: Mix 1 tablespoon of fabric softener with ½ litre of water and pour into compartment <b>II</b> (<i>not with outdoor or down fabrics</i>).</li> <li>– Reduce the detergent dosage for the next wash cycle.</li> </ul>
● Intense noise formation, vibrations and “wandering” during the spin cycle.	<ul style="list-style-type: none"> <li>– Are the appliance feet fixed? Secure the appliance feet → <i>Installation instructions</i>.</li> <li>– Transportation safety devices removed? Remove the transportation safety devices → <i>Installation instructions</i>.</li> </ul>
● Indicator lamps do not function during operation.	<ul style="list-style-type: none"> <li>– Power cut?</li> <li>– Fuses triggered? Reset/change the fuses.</li> <li>– If the fault occurs repeatedly, call the after-sales service.</li> </ul>
● Programme sequence longer than usual.	<ul style="list-style-type: none"> <li>– Not a fault - unbalanced load detection system adjusts imbalance by repeatedly distributing the laundry.</li> <li>– Not a fault - foam detection system active - adds an additional rinse cycle.</li> </ul>
● Detergent residues on the laundry.	<ul style="list-style-type: none"> <li>– Occasionally, phosphate-free detergents contain water-insoluble residues.</li> <li>– Select <b>Rinse</b> or brush the laundry after washing.</li> </ul>

If you cannot correct a fault yourself or a repair is required:

- Turn the programme selector to **Off** and remove the mains plug from the socket.
- Turn off the water supply and call the after-sales service → *Installation instructions*.



Register your new Bosch now:  
[www.bosch-home.com/welcome](http://www.bosch-home.com/welcome)



### Washing machine WAB28161GB



en operating instructions



## Free Manuals Download Website

<http://myh66.com>

<http://usermanuals.us>

<http://www.somanuals.com>

<http://www.4manuals.cc>

<http://www.manual-lib.com>

<http://www.404manual.com>

<http://www.luxmanual.com>

<http://aubethermostatmanual.com>

Golf course search by state

<http://golfingnear.com>

Email search by domain

<http://emailbydomain.com>

Auto manuals search

<http://auto.somanuals.com>

TV manuals search

<http://tv.somanuals.com>