

Solving Minor Problems Yourself

Problem	Possible Causes	Solution
The iron does not heat up.	Temperature control (10) set to minimum.	Turn to a higher position.
	No mains supply.	Check with another appliance or plug the iron into a different socket.
	The "Secure" system has been activated. The iron is set to stand-by.	Move the iron gently from side to side to reactivate it.
"Secure" indicator lamp (13) flashes*.	The "Secure" system has been activated. The iron is set to stand-by.	Move the iron gently from side to side to reactivate it.
The clothes tend to stick.	The temperature is too high.	Turn the temperature control (10) down and wait until the iron has cooled down.
Water drips out of the soleplate (6) together with steam.	Temperature control (10) setting is too low.	Turn the temperature control to a higher setting (between "••" and "max") and wait until the pilot light (11) goes out.
	Steam regulator (3) is set too high in conjunction with a low temperature.	Set the steam regulator to a lower setting.
	You have pressed the shot of steam button (2) repeatedly without waiting for 5 seconds between each press.	Wait 5 seconds between each press of the jet of steam button.
Steam does not come out.	Steam regulator (3) is set to "0" position.	Set the steam control to an open steam position.
	No water in the tank (7).	Fill the tank.
	The temperature is too low. Anti-drip system is activated.	Set to a higher temperature if compatible with the fabric.
Spray does not work.	No water in the tank (7).	Fill the water tank.
	Obstructed mechanism.	Contact the Technical Service.
Smoke comes out when connecting the iron for the first time.	This may be caused by the lubrication of some of the internal parts.	This is normal and will stop after a few minutes.
Deposits come out through the holes in the soleplate (6).	Traces of lime scale are coming out of the steam chamber.	Carry out a cleaning cycle (see "Calc'nClean" section).

* (Model dependent)

If none of the above solves the problem, get in touch with an authorised technical service.

You can download this manual from the local homepages of Bosch.

Thank you for buying the TDA10 steam iron from Bosch. This iron has a lightweight design and is built to perform. This iron has been designed according to ecological criteria, related to the sustainable development, analyzing its whole lifecycle – from material selection to its later reusing or recycling – evaluating the improvement possibilities, from a technical, economical and environmental point of view.

These instructions contain valuable information about the unique features of this iron and some hints to make ironing easier for you.

Please visit www.bosch-home.co.uk for more product information or to register your product, just follow the link to the Online guarantee registration.

Important

This appliance has been designed exclusively for domestic use and must not be used for industrial purposes. Carefully read through the operating instructions for the appliance and safeguard them for future reference.

General safety instructions

- The iron must not be left unattended while it is connected to the mains supply.
- Remove the plug from the socket before filling the appliance with water or before pouring out the remaining water after use.
- The appliance must be used and placed on a stable surface.
- When placed on its stand, make sure that the surface on which the stand is placed is stable.
- The iron should not be used if it has been dropped, if there are visible signs of damage or if it is leaking water. It must be checked by an authorized Technical Service Centre before it can be used again.
- With the aim of avoiding dangerous situations, any work or repair that the appliance may need, e.g. replacing a faulty mains cable, must only be carried out by qualified personnel from an Authorised Technical Service Centre.
- This appliance can be used by children aged from 8 years and above and persons with reduced physical, sensory or mental capabilities or lack of experience and knowledge if they have been given supervision or instruction concerning use of the appliance in a safe way and understand the hazards involved. Children shall not play with the appliance. Cleaning and user maintenance shall not be made by children without supervision.

Customer Service

Great Britain

Bosch Customer Service
Grand Union House
Old Wolverton Road Milton Keynes
MK12 5PT

UK +44 (0)844 892 8979

IRL +353 (0)1450 2655

www.bosch-home.co.uk




Sensixx'x DA10



en Operating instructions

001 Sensixx'x DA10 GB 09/13

- Keep the iron and its cord out of reach of children less than 8 years of age when it is energized or cooling down.
-  CAUTION. Hot surface. Surface is liable to get hot during use.

This appliance reaches high temperatures and produces steam during use, this could cause scalds or burns in case of improper use.

- Do not touch the soleplate! Hold the iron by its handle.
- Do not leave the power cable hanging over the table or ironing board, to prevent the appliance from falling.
- Do not iron clothing while it is being worn!
- Never spray or aim the steam at persons or animals!
- Do not allow the power cable to come into contact with sharp edges or with the soleplate when it is hot.
- Never rest the iron in a horizontal position when the soleplate is hot. Rest it on its heel.
- Do not touch the appliance with wet hands when in operation.
- This appliance is to be connected and used in accordance with the information stated on its characteristics plate.
- This appliance must be connected to an earthed socket. If it is absolutely necessary to use an extension cable, make sure that it is suitable for 16A and has a socket with an earth connection.
- If the safety fuse fitted in the appliance blows, the appliance will be rendered inoperative. To restore normal operation the appliance will have to be taken to an authorised Technical Service Centre.
- In order to avoid that, under unfavourable mains conditions, phenomena like transient voltage drops or lighting fluctuations can happen, it is recommended that the iron is connected to a power supply system with a maximum impedance of 0.26Ω. If necessary, the user can ask the public power supply company for the system impedance at the interface point.
- The appliance must never be placed directly under the tap to fill the water tank.
- Unplug the appliance from the mains supply after each use, or if a fault is suspected.
- The electrical plug must not be removed from the socket by pulling the cable.
- Never immerse the iron in water or any other fluid.
- Do not leave the appliance exposed to weather conditions (rain, sun, frost, etc.)

Tips to help you save energy

Steam production consumes the most energy. To help minimise the energy used, follow the advice below:

- Start by ironing the fabrics that require the lowest ironing temperature. Check the recommended ironing temperature in the label on the garment.
- Regulate the steam according to the selected ironing temperature, following the instructions in this manual.

Register your new Bosch now:
www.bosch-home.co.uk

- Try to iron the fabrics while they are still damp and reduce the steam setting. Steam will be generated from the fabrics rather than the iron. If you tumble dry your fabrics before ironing them, set the tumble drier on the 'iron dry' programme.
- If the fabrics are damp enough, turn off the steam regulator completely.
- Stand the iron upright during pauses. Resting it horizontally with the steam regulator on generates wasted steam.

Environmental Care

This iron has been designed according to ecological criteria, related to the sustainable development, analysing its whole lifecycle - from material selection to its later reuse or recycling - evaluating the improvement possibilities, from a technical, economical and environmental point of view.

Before disposing of a used appliance away, you should make it noticeably inoperable e.g. cut off the mains lead and be certain to dispose of it in accordance with current laws and regulations. Your retailer, town council or local council can give you detailed information about these.



This appliance is labelled in accordance with European Directive 2012/19/EU concerning used electrical and electronic appliances (waste electrical and electronic equipment - WEEE).

The guideline determines the framework for the return and recycling of used appliances as applicable throughout the EU.

GUARANTEE TERMS

The terms of the guarantee for this appliance are in accordance with that stated by our representative for the country in which it is sold. Details of those conditions can be obtained from the retailer from whom the appliance was purchased. The SALES RECEIPT must be presented when making any claims against the terms of this guarantee. We reserve the right to make technical modifications.

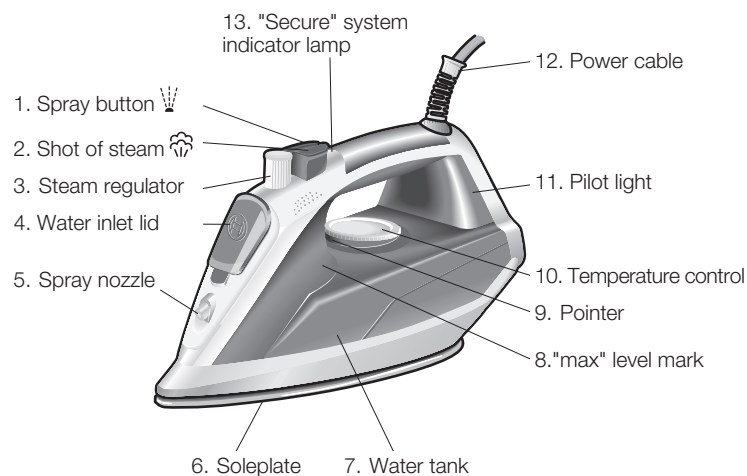
Before using the Iron for the first time

Please carry out the following steps:

1. Remove the protective cover from the soleplate before using the iron.
2. While the iron is unplugged, fill the water tank (7) with tap water.
3. Plug the appliance into the mains and set the temperature control (10) to the "max" position by lining it up with the pointer (9).
4. When the iron has reached the correct temperature (the pilot lamp No. 11 goes out), set the steam regulator (3) to the "2" position by lining it up with the pointer.
5. Hold the iron horizontally and repeatedly press the shot of steam button (2). Any residue should come out of the soleplate (6). It may smoke and smell – this is normal and will cease after a short while.
6. If necessary, carefully clean the soleplate down with a dry, folded cloth.

Using Your Iron

1 Your iron



2 Filling the water tank

⚠ Set the steam regulator (3) to the "0" position and unplug the iron from the mains!

Place the iron at an angle of 45° or more, with the point facing upwards.

1. Open the water inlet lid (4).

2. Fill the water tank, **making sure not to pass the "max" level mark (8).**

3. Close the water inlet lid.

Use only clean water from the tap without mixing anything with it. The addition of other liquids, (unless recommended by Bosch) such as perfume, will damage the appliance.

Any damage caused by the use of the aforementioned products will make the guarantee void.

Do not use condensation water from tumble dryers, air conditioning systems or similar. This appliance has been designed to use normal tap water.

To prolong the optimum steam function, you may mix tap water with distilled water 1:1. If the tap water in your district is very hard, mix tap water with distilled water 1:2.

You can inquire about the water hardness with your local water supplier.



9 Vertical steam

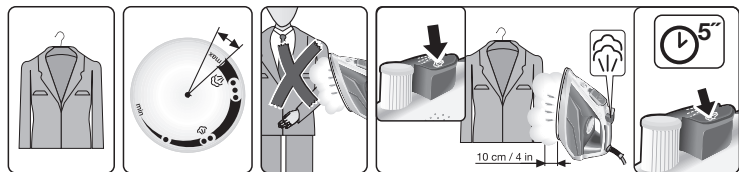
⚠ Never direct the steam jet at garments that are being worn.

⚠ Never direct the steam at persons or animals!

1. Set the temperature control (10) to "max".

2. Hang article of clothing on a clothes hanger.

3. Operate the iron in a vertical position at a distance of 10 cm / 4 in, and press the shot of steam button (2) repeatedly with pauses of at least 5 seconds.



10 Multiple descaling system

Depending on the model, this range is equipped with the following anti-calc systems "3AntiCalc" (components 1+2+3).

A. self-clean

Each time you press the steam regulator (3), the "self-clean" system cleans the mechanism of scale deposits.

B. Calc'nClean

The "Calc'nClean" function helps to remove scale particles out of the steam chamber.

Use this function approximately every 2 weeks if the water in your area is very hard.

1. Unplug the iron from the mains socket, and fill the water tank (7) with water.

2. Set the temperature control (10) to the "max" position and plug in the iron.

3. After the necessary warm-up period, unplug the iron.

4. Hold the iron over a sink and remove the steam regulator (3) by turning it to the "calc" position then carefully taking out the spring wrapped around the needle.

5. Slowly pour water (approximately 150 ml) into the steam regulator hole.

6. Gently shake the iron. Boiling water and steam will come out of the soleplate carrying scale or deposits that might be there. When the iron stops dripping, reassemble the steam regulator by reinserting it, lining up the "calc" position with the pointer (9), pressing it in and turning it to the "0" position.

7. Heat up the iron again until the remaining water has evaporated.

8. If the steam regulator needle is soiled, remove any deposits from the tip with vinegar and rinse it off with clean water.

3 Setting the temperature

Check the laundry care label for the required ironing temperature.

1. Set the temperature control (10) to the corresponding position by lining it up with the pointer (9) on the iron.

Fabric	Temperature Setting
Synthetics	•
Silk - Wool	••
Cotton	•••
Linen	max

The pilot light (11) switches on while the appliance is heating up and switches off as soon as the set temperature is reached. If the temperature of the hot iron drops, you can continue ironing while the iron heats up again to the set temperature.

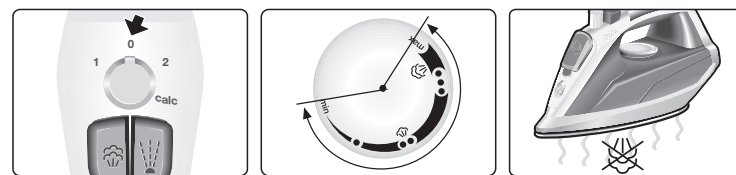
Tips:

- Sort your garments according to their care labels, always starting with clothes that have to be ironed at the lowest temperature.
- If you are unsure what type of material the garment is made from, start ironing on the lowest temperature setting and increase accordingly. If the garment is made from mixed fabrics, set the temperature for the most delicate material.
- For silk, woollen or synthetic materials iron the reverse side of the fabric to prevent shiny patches. Avoid using the spray function to prevent stains.

4 Ironing without steam

Select an appropriate temperature for the type of material being ironed (see "Setting the temperature" section).

1. Set the steam regulator (3) to "0".



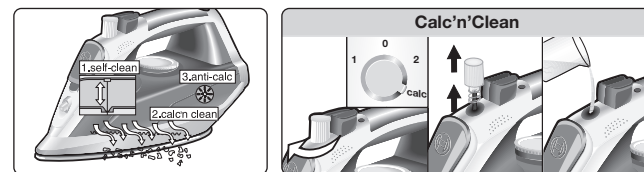
5 Ironing with steam

The steam regulator (3) is used to adjust the amount of steam produced when ironing.

Temperature Setting	Recommended steam regulator setting
••	1
••• to "max"	2

C. anti-calc

The "anti-calc" cartridge has been designed to reduce the build-up of scale produced during steam ironing, helping to extend the useful life of your iron. Nevertheless the "anti-calc" cartridge cannot remove all of the scale that is produced naturally over time.



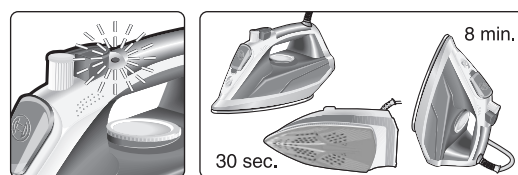
11 "Secure" auto shut-off function

(Model dependent)

The "Secure" auto shut-off function switches off the iron when it is left unattended, thus increasing security and saving energy. After plugging in the appliance, this function will be inactive for the first two minutes in order to give the appliance time to reach the set temperature.

After such time, if the iron is not moved for 8 minutes while in the upright position or 30 seconds while resting on its soleplate or on its side, then the safety circuit will switch the appliance off automatically and the indicator lamp (13) will start flashing.

To reconnect the iron, just move it about gently.

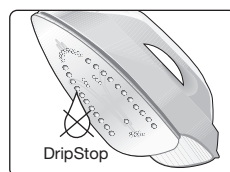


12 Anti-drip system

(Model dependent)

If the temperature control (10) is set too low, the steam is automatically switched off to prevent water from dripping out of the soleplate (6).

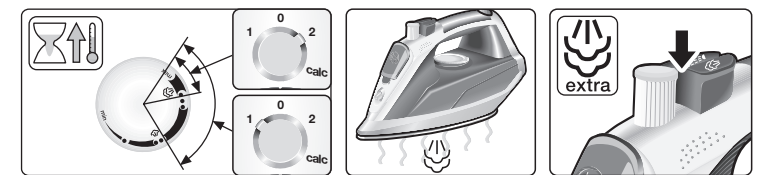
There may be an audible click when this occurs.



Important :

Steam is only available if the temperature control (10) is set at the steam symbols ☁ - ☁ between "••" and "max".

Tip: for better ironing results, iron the last strokes without steam to dry the garment.



6 Extra steam

To facilitate the ironing of very creased laundry or thick materials, the volume of steam can be increased briefly. To do this, set the temperature control (10) to "max". Get extra steam by pressing the steam regulator (3) for maximum 2 seconds.

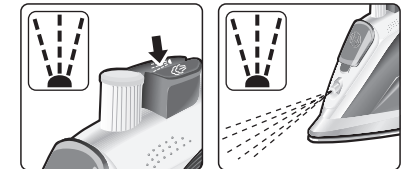
7 Spray

This can be used to remove stubborn wrinkles.

Do not use the spray function with silk as staining may occur.

1. Select an appropriate temperature for the type of material being ironed (see "Setting the temperature" section).

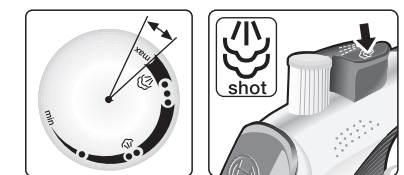
2. When ironing, press the spray button (1) and water will spray out of the spray nozzle (5) onto the garment.



8 Ironing with shot of steam

1. Set the temperature control (10) to "max".

2. Press the shot of steam button (2) repeatedly with intervals of at least 5 seconds.



13 After ironing

1. Unplug the iron from the mains socket.

2. Set the steam regulator (3) to the "0" position.

3. Open the water inlet lid (4).

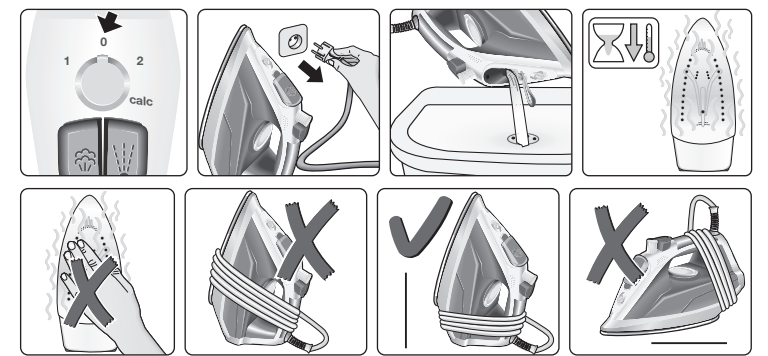
4. Hold the iron with the front facing down and shake it gently until the water tank is empty.

5. Close the water inlet lid.

6. Set the iron aside in a vertical position to cool down.

7. Coil the power cable loosely around the heel of the iron, before storing. Depending on the model, the cable can be inserted into the clip located at the bottom of the back cover.

8. Store the iron in an upright position.



Cleaning and Maintenance

⚠ Attention ! Risk of burns !

For general cleaning, follow the information below:

Problem	Solution
Dirty/lightly marked iron body or soleplate	Clean the body of iron or soleplate with a damp cloth then dry it.
Mark develops on soleplate during use	Set the iron to its maximum temperature setting. Rub the iron a few times over with a dry cotton cloth folded several times.
Heavily stained soleplate	While the iron is cold, iron a linen cloth soaked in white vinegar. Then dampen a cloth with water and wipe the soleplate clean and dry thoroughly.

DO NOT de-scale or clean the water tank with cleaning products or solvents, as these could cause the iron to drip when using the steam function.

DO NOT use a "professional steam cleaner" for cleaning the appliance.

DO NOT use sharp objects or abrasive products to clean the soleplate or any other part of the appliance. To keep the soleplate in good condition, do not allow it to come into contact with metal objects.

Free Manuals Download Website

<http://myh66.com>

<http://usermanuals.us>

<http://www.somanuals.com>

<http://www.4manuals.cc>

<http://www.manual-lib.com>

<http://www.404manual.com>

<http://www.luxmanual.com>

<http://aubethermostatmanual.com>

Golf course search by state

<http://golfingnear.com>

Email search by domain

<http://emailbydomain.com>

Auto manuals search

<http://auto.somanuals.com>

TV manuals search

<http://tv.somanuals.com>