

MAXPRO® NVR XE

(Xpress Edition)—Rev B

Entry Level Network Video Recorder

Quick Install Guide

Document 800-16129V4 – Rev A – 03/2017

Introduction

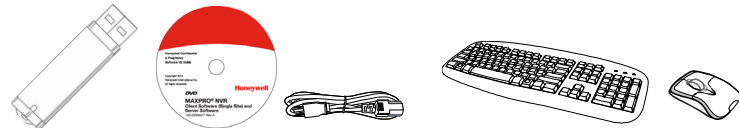
Welcome to your new Honeywell MAXPRO® NVR XE. This guide helps you set up the NVR right out of the box. Before installing your NVR, please read this guide carefully.

Note Translated Quick Install Guides can be accessed on your MAXPRO NVR unit after logging in, by clicking on **Start menu > Honeywell > Quick Install Guides**.



Unpack

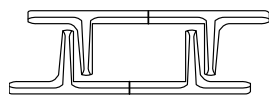
Check that the items received match those listed on the order form and packing slip. The packing box should include, in addition to your NVR unit and this guide:



Recovery USB Flash Drive

MAXPRO NVR Client Software (Single Site) and Server Software DVD (includes manuals)

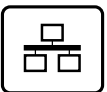
MAXPRO Viewer Multi-Site Viewing Software Kit (includes DVD and Getting Started Guide). Not shown.



Chassis feet

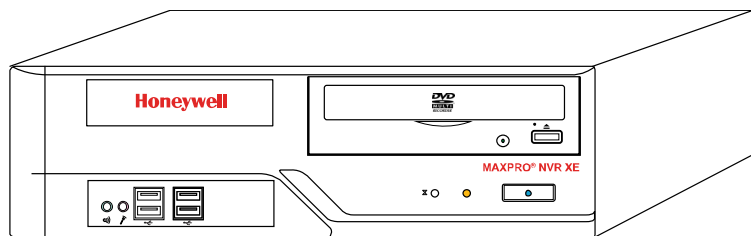
Not shown: MAXPRO NVR DDNS Installation Instructions

Note Other peripheral hardware (owner supplied) will also be needed for your installation (such as cameras, network PoE switch for the camera network, network switch for a client workstation network, a monitor, and an optional keyboard controller).



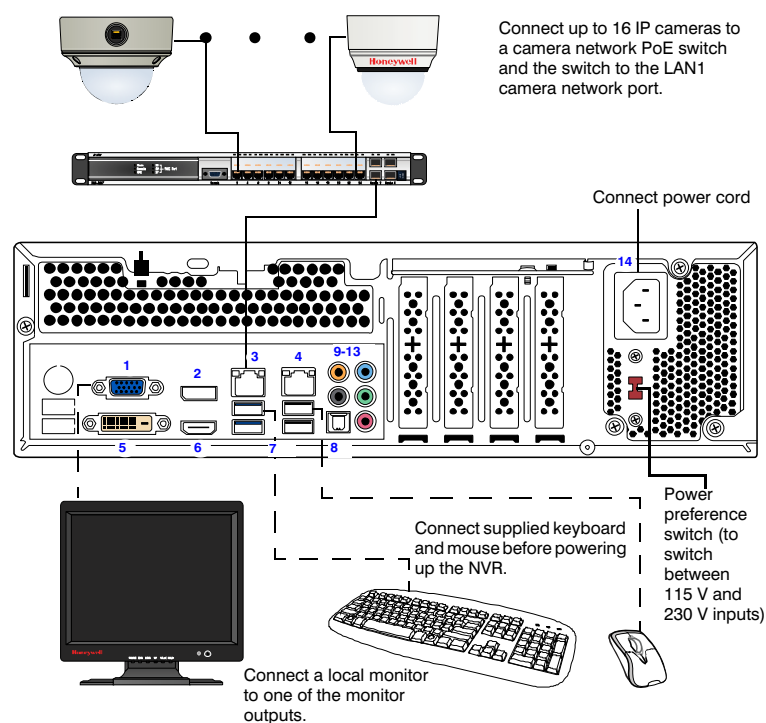
Install the Hardware

Mount the MAXPRO NVR XE Unit Mount the MAXPRO NVR XE unit on a flat surface, horizontally or vertically, using the supplied chassis feet.



Connect the Hardware

Rear Panel



#	Connector	Connects to...
1	VGA Port	VGA monitor
2	Display Port	DP monitor
3	LAN1 - Camera Network Port	Network
4	LAN2 - Client/Workstation Network Port	Network
5	DVI-D Port	DVI monitor
6	HDMI Port	HDMI monitor
7	USB Ports (x4)	Various devices
8	S/PDIF (Optical)	Not used
9-13	Audio inputs and outputs	Not used
14	AC Power	Electrical outlet

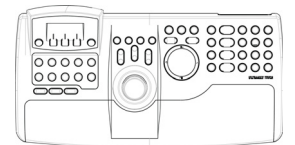
Switching the Power Preference

The MAXPRO NVR XE power rating is 115V/230V AC, 7/4 A, 60/50 Hz, 300 W. The recommended power input is 110-120 V.

In some regions users may require the use of a 230 V AC power input. In this case, flip the power input preference switch on the back of the MAXPRO NVR XE unit (see the diagram of the back panel above for the location of the switch).

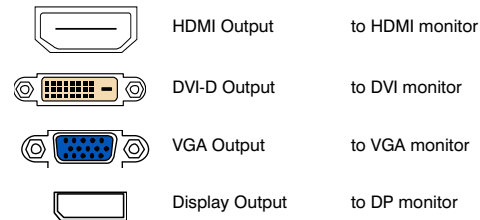
Rear Panel Connections

Keyboard Controller (Optional) Follow the documentation that was included with your IP keyboard controller to connect it to the NVR.



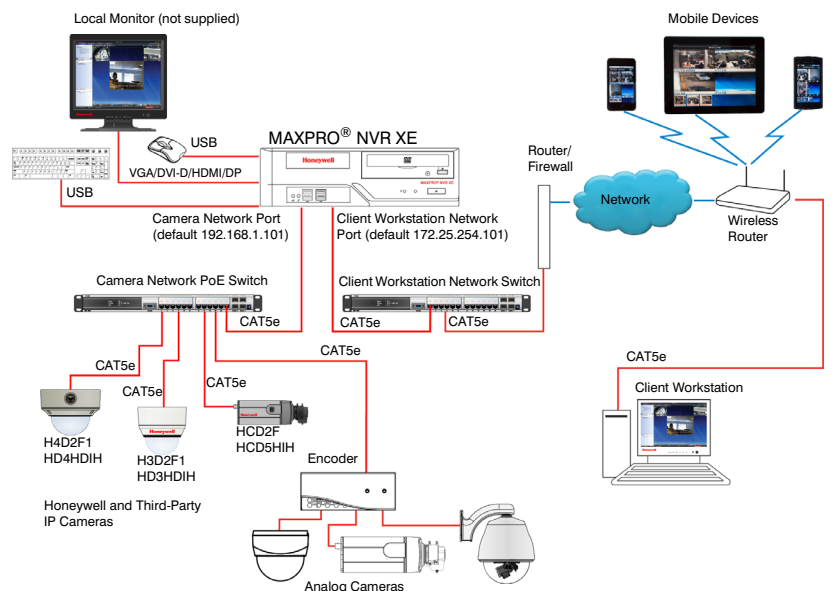
Network Connections Connect a network PoE switch to the camera network port at the rear of the MAXPRO NVR. Connect your cameras to the network PoE switch with CAT5 Ethernet cables. Optionally, connect the client workstation network port to your client workstation network via a network switch. This allows remote access to your NVR. The default client workstation network IP address must be changed to an available static IP address on your client workstation network.

Monitor(s) The MAXPRO NVR XE comes with built-in graphics and four types of monitor outputs. The unit supports connection of a single monitor using one of the outputs.

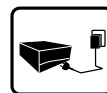


The recommended resolution for your monitor is 1280 x 1024 pixels (minimum 1024 x 768) and display colors of at least 32 bit.

Dual Network Configuration



Contact your dealer to purchase Honeywell and third-party IP and analog cameras and encoder.

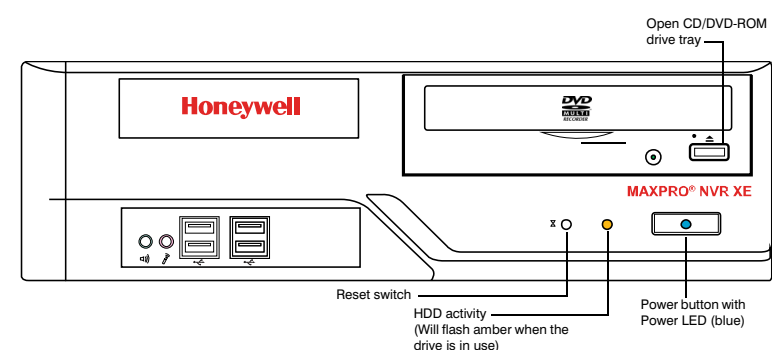


Power Up the Unit

Note Honeywell recommends using an uninterruptible power supply (UPS) for the NVR unit, the camera network switch, and the cameras to ensure that the NVR can continue to record video during a power outage or during transient power events. If you need to monitor video during a power outage, consider a UPS for the monitor as well.

- Before powering up the NVR, turn on camera(s) and other devices — such as a network switch or router — connected to the NVR.
- Press the power button on the front of the NVR.

Front Panel LEDs



- After powering on the unit, you are prompted to log on. The Default user is user name: **NVR-Admin**, password: **Password\$123**. The user name and password are case sensitive. You will be prompted to create a new password the first time that you log in. The setup wizard starts automatically but may take two minutes.

Note Translated Quick Install Guides can be accessed on your MAXPRO NVR unit after logging in, by clicking on **Start menu > Honeywell > Quick Install Guides**.



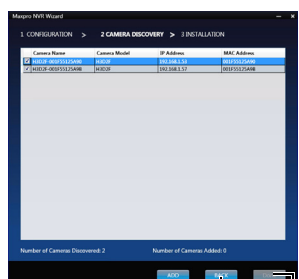
Honeywell IP Camera Configuration

Using the MAXPRO NVR Wizard (3 Clicks* to Live Video)

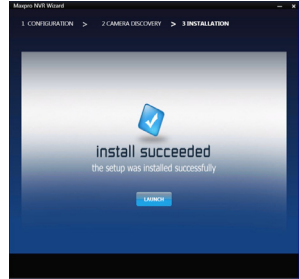
Note The setup wizard starts automatically but may take two minutes.



Reset values without saving changes. Proceed to CAMERA DISCOVERY.



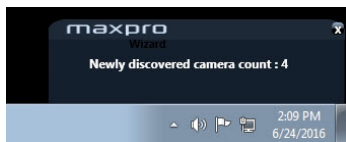
Return to CONFIGURATION page. Click only after all connected cameras are discovered and added.



- The CONFIGURATION dialog appears. When the network is ready (network icon in Windows tray), click **NEXT** to accept the default settings and proceed to CAMERA DISCOVERY. To modify the settings for your unique system requirements, follow the table below. After initial setup, you can do this in the MAXPRO NVR client.

Field	Description
Video Format	NTSC, PAL
Enable Continuous Recording	Start recording as soon as the camera is added in MAXPRO NVR.
Dynamic IP Synchronization	NVR synchronizes any change in a device's IP address.
Auto Add Discovered Cameras	Any newly connected device is automatically added to the Devices list.
Choose Camera Network	Choose your camera network.
Auto IP Assignment	Assigns a valid static IP address to the camera. Use only if you do not have a DHCP server and you want to assign an IP address in your computer network range.
Filter Discovered Cameras	Filter the discovered cameras based on the camera model and/or IP range.

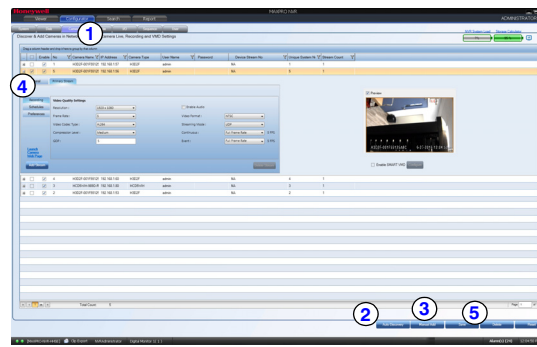
- The CAMERA DISCOVERY window appears. Each newly connected camera is identified and an IP address is assigned to the camera by the Wizard, after which the camera reboots. It may take a few minutes before cameras are discovered and added. You will see a Discovery in progress... indicator as well as a pop-up message on the lower right of your monitor. Click **Done**.



- The INSTALLATION window appears. Click **LAUNCH** to start the MAXPRO NVR application. Proceed to **Live View**.
- Only Honeywell IP cameras and HVE encoders (except Honeywell Performance Series and New equalP® Series IP cameras) are discovered and added in the MAXPRO NVR Wizard.

* 3 clicks for specific models with default settings and in a local area network.

Third Party Device Configuration



- On the **Configurator** tab, click the **Camera** tab.
- Click **Auto Discovery** (Auto Discovery) to automatically discover the connected IP cameras in the subnet.
- Click **Manual Add** (Manual Add) to manually add the IP device to the Camera list. Enter the device's IP address into the field and ensure that the user name and password listed for the new camera match the user name and password of that camera.
- To change the default parameters of a camera, select it and then click **⊞** at the beginning of the camera line to open the camera advanced settings pane where you can modify the settings as required.
- Click **Save** for your new settings to take effect.

Additional Configuration



Use the **Search** tab to search for recorded video (clips) or events. Use the **Configurator** tab to configure video devices and set up your MAXPRO NVR system.

- Configurator** tab sub-tabs:
- System:** System information, event recording, email, archival schedule, holiday/exceptions for schedules.
 - Disk:** Configure and monitor video storage hard drives.
 - Camera:** Discover and add network cameras, live camera configuration, recording, video motion detection.
 - Schedule:** Set recording schedules configuration.
 - I/O:** Configure input and output for each camera.
 - Sequence:** Select a sequence of cameras for live video.
 - User:** Set user access and permission levels.



MAXPRO NVR Web Client

To access the Web Client, click on the MAXPRO NVR Web Client shortcut on the NVR desktop. Click **Continue** on the self signed certificate warning message that appears. Login to the Web Client with default Username: **admin** and Password: **trinity**.



MAXPRO NVR XE Default IP Address Configuration

Your MAXPRO NVR XE unit has two configured network ports with the following default static IP addresses:

- **192.168.1.101** for LAN1 (Camera Network)
- **172.25.254.101** for LAN2 (Client Workstation Network)

If more than one MAXPRO NVR XE unit is on the same network, you must assign a unique IP address and computer name to each unit (the default name is **MAXPRO-NVR**).

- To change the IP address using Windows:
 - Click the **network icon** (or) located next to the clock (lower right of screen), click **Open Network and Sharing Center**, then click **Change adapter settings**.
 - Right-click **Camera Network** or **Client Workstation Network**, and then select **Properties**.
 - Click **Internet Protocol Version 4 (TCP/IPv4)**, then click **Properties**.
 - Click **Use the following IP address**, then in the **IP address**, **Subnet mask**, and **Default gateway** boxes, type the IP address settings.
 - Click **Use the following DNS server addresses**, and then, in the **Preferred DNS server** and **Alternate DNS server** boxes, type of the addresses of the primary and secondary DNS servers. This step is required when clients connect through the Internet.
- To change the computer name using Windows:
 - Click **Start**, right-click **Computer**, click **Properties**, click **Advanced system settings**, click the **Computer Name** tab, and then click **Change**.
 - Under **Computer name**, delete the old computer name, type a new computer name, and then click **OK**. The name cannot contain spaces or all numbers or any of the following characters: < > ; : " * + = \ | ?
 - After changing the computer name, restart the computer.
 - Navigate to the C:\Program Files(x86)\Honeywell\MaxproNVR\TrinityFramework\bin folder, and then double-click **MaxproNVRMachineNameUtility.exe** to open the MAXPRO NVR Utility.
 - The new computer name should automatically appear in the Machine Name field. If it does not, enter the name manually. Click **Update**. The message Machine Name Updated successfully appears when the update is complete.



More Information

MAXPRO NVR XE

Please refer to the appropriate user guide located on the software/documentation DVD or on the Honeywell product web site at www.honeywell.com/security. The *MAXPRO NVR Guides (Installation and Configuration Guide, and Operator's Guide)* provide detailed information on adding and configuring third party cameras, the multi-function Web Client, as well as other advanced features.

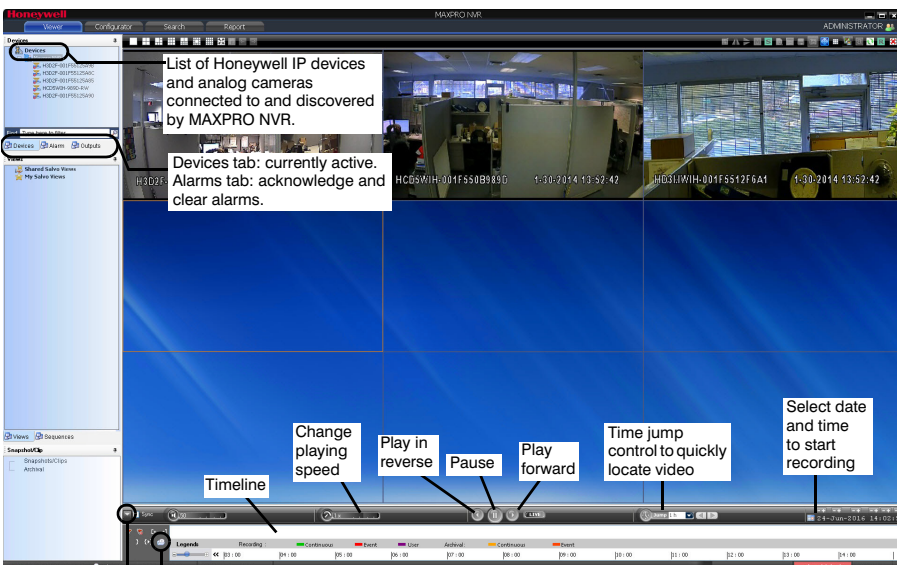
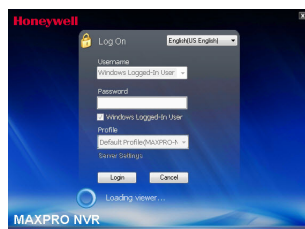
Third Party Devices

A comprehensive list of all the third party devices supported by MAXPRO NVR XE is available on the product compatibility page: www.security.honeywell.com/nota/compatibility/index.html.



Live View

- Please wait while the system logs you on automatically as a Windows Logged-In User.
- MAXPRO NVR launches and the Viewer tab displays (see below).
- To view video from cameras, drag **MAXPRO NVR** in the Devices list into the display panel to show video from all discovered cameras in the Viewer. You can also highlight and drag each camera into a panel.



List of Honeywell IP devices and analog cameras connected to and discovered by MAXPRO NVR.

Devices tab: currently active. Alarms tab: acknowledge and clear alarms.

Change playing speed

Play in reverse

Pause

Play forward

Time jump control to quickly locate video

Select date and time to start recording

Timeline

Images/Clips: select images and clips to view. Double-click or drag the clip to a Viewer panel to view. To export a clip for forensics, click the arrow to switch to Full Timeline mode, then click the **Clip Export** icon.

User currently logged on

Number of alarms detected



Free Manuals Download Website

<http://myh66.com>

<http://usermanuals.us>

<http://www.somanuals.com>

<http://www.4manuals.cc>

<http://www.manual-lib.com>

<http://www.404manual.com>

<http://www.luxmanual.com>

<http://aubethermostatmanual.com>

Golf course search by state

<http://golfingnear.com>

Email search by domain

<http://emailbydomain.com>

Auto manuals search

<http://auto.somanuals.com>

TV manuals search

<http://tv.somanuals.com>