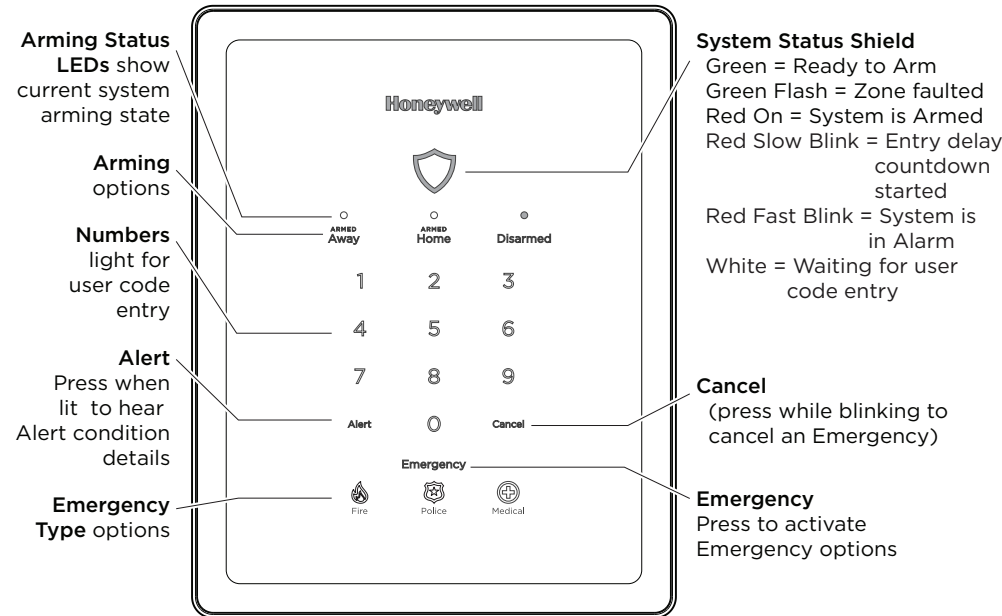


# Lyric™ Gateway



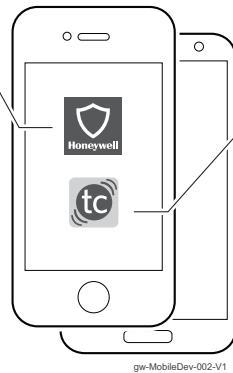
## Getting Started

The Lyric Gateway combines a security system and home automation with flexibility to operate your system directly from the Gateway's Touchpad, or from a mobile (smart) device (smart phone, tablet, PC, etc.) using either the **MyHome Gateway™** App or **Total Connect™** App.



**MyHome Gateway™ App**  
 Gateway and device must be on the same Wi-Fi network

This free App lets you operate your Security, Video and Automation Functions; Change system settings; add mobile devices and Z-Wave® components

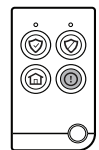


**Total Connect™ Remote Services App**  
 Can use from anywhere  
 This App provides remote access to operate your Security, Video and Automation Functions

Download and install the Apps from your mobile device's App Store.

### Other Options to Operate Your Gateway Security Features:

Wireless Keys (Key Fobs)



SixXFOB



5834-4

#### IMPORTANT SECURITY NOTICE

If using wireless keys: your key fob is similar to your keys or access card. If lost or stolen, another person can compromise your security system. Immediately notify your Dealer/Installer of a lost or stolen key fob. The Dealer/Installer will then remove the key fob programming from the security system.

Wireless Keypads



LKP500

## Arming Options

To...	Press...	The system...
Arm your system	<sup>ARMED</sup> Away and enter your user code	Arms in Away mode, for when no one will be home.
	<sup>ARMED</sup> Home and enter your user code	Arms in Home mode, for when someone will be home.
Quick Arm your system	<sup>ARMED</sup> Away or <sup>ARMED</sup> Home for 3 seconds	Quick Arms your system without a user code (if programmed to do so)
Disarm your system	Disarmed and enter your user code	Disarms

### Switching Arming Modes:

When the system is armed or while arming or disarming, you can press any arming option and enter your user code to quickly switch between arming modes. This feature is available only from the Touchpad or a wireless key.

**Auto-Home Mode:** If your system is programmed to do so, it automatically arms in Home mode when you select Armed Away but no one opens an exit-delay door. [This mode is not available when arming using Total Connect.]

## Emergency Options

To...	Press...	The system...
Signal an Emergency	Emergency then select an Emergency Type Fire  Police or  Medical	If programmed to do so, notifies the monitoring company that a fire/police/medical emergency exists.

## Canceling and Clearing Alarms / Emergencies

1	2	3	<b>Enter your User Code.</b> The Alarm silences and the system announces the status.
4	5	6	
7	8	9	
	0	Cancel	Check for alarm details on MyHome Gateway App or Total Connect Remote Services.
		User Code	Enter a User Code again to clear alarms.

#### IMPORTANT!

If the Lyric Gateway is beeping rapidly when you enter the premises, an alarm has occurred during your absence and an intruder may still be on the premises.

**LEAVE IMMEDIATELY and CONTACT THE POLICE** from a nearby safe location.

## System Sounds

When you hear...	It means...
Beeping	Touchpad options are being pressed, entry/exit countdowns have begun, and other functions*
Announcements or Chime	A system condition exists, or a zone has been faulted. (Voice announcements, chimes and most sounds are adjustable through the <b>MyHome Gateway™</b> App)
Sounders or Sirens blaring (internal and/or external)	System is in Alarm. Alarm volume is <b>not</b> adjustable.

\*NOTE: A beep every 45 seconds indicates one of your wireless devices has a low battery condition. Use **MyHome Gateway** App to see which device(s) need new batteries.

## Gateway Menu Mode

The Gateway Menu Mode provides options to add and delete mobile (smart) devices from your system or change the system Wi-Fi network. Ensure the System is disarmed. Enter the **Master User Code** and the two-digit code for the desired option:

Code	Function
11	Hear a list of the available menu mode options.
20	Delete all enrolled MyHome Gateway Apps. [You will need to re-enroll devices you want to use to operate your Gateway.]
21	Enroll or re-enroll devices you want to use to operate your Gateway with the MyHome Gateway App. See the following section.
31	Enter the Gateway in Access Point mode; used to change your Wi-Fi setup if your network connection/router changes.
41	Enter WPS enrollment mode; used to change your Wi-Fi setup if your network connection/router changes to a router that supports WPS.

**To operate additional features of your Gateway:** Use either the **MyHome Gateway™** App for local control, or the **Total Connect™** App to remotely operate your Gateway system from a mobile (smart) device.

## Adding Mobile Devices to your Gateway

Up to 8 mobile devices can operate your Gateway system with the **MyHome Gateway** App. To add a device:

1. Download the Honeywell **MyHome Gateway** App to the mobile device(s) that will be used to control your system.
2. Ensure and each mobile device is connected to the same Wi-Fi network as the Gateway (check **Settings > Wi-Fi** on the device).
3. On the Gateway Touchpad, enter the **Master code** and **2 1** to enter the Gateway in enrollment mode.
4. Launch the **MyHome Gateway** App on a device and the App displays a six-digit enrollment number.
5. Enter that six-digit number on the Gateway Touchpad.
6. When prompted, enter a valid user code on the **MyHome Gateway** App screen. The screen confirms enrollment success and the **MyHome Gateway** App Home screen opens.
7. Follow the prompts on screen and throughout the User Reference Guide to operate your system with the **MyHome Gateway** App.

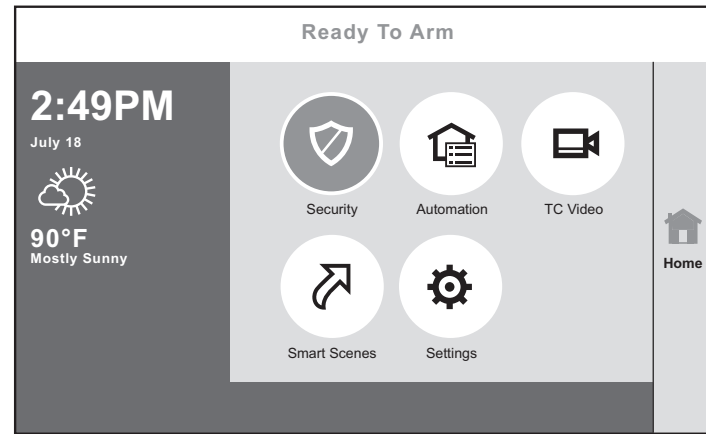
For full details of all user functions, please see the system's User Reference Guide located online at:

<http://www.security.honeywell.com/hsc/products>.

These manuals also available from your installer upon request.

## Using the MyHome Gateway App

Start the **MyHome Gateway** App and refer to the following tables. Manage System Security, Automation, Smart Scenes, Video and Settings from the Home screen:

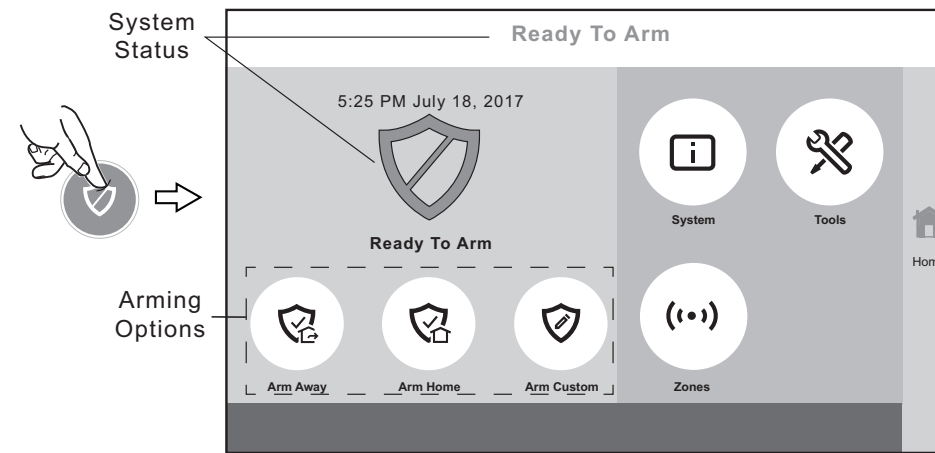


Option	Press...	Then...	Lets you...
Security		See the next Table	Operate and manage the security features of your Gateway. See the next table.
Automation		---	Manually operate your Z-Wave devices
	<b>Setup</b> then		Add or delete Z-Wave Devices
TC Video		---	View and configure system cameras; manage video recovery functions
Smart Scenes		Master User Code	View and run automation scenes to operate your system for convenience, comfort, energy savings and security*.
Settings		---	Adjust the Gateway touchpad and LED brightness and the announcements and chime volume

\*Once a Total Connect account is created, Smart Scenes are created and deleted using **Total Connect Remote Services**.

**Recommended for Android Mobile Device Users:** Disable Power Saving mode on your device. Failure to do so may cause the app to lose connection to the Gateway if the mobile device enters power save mode.

## Security Options

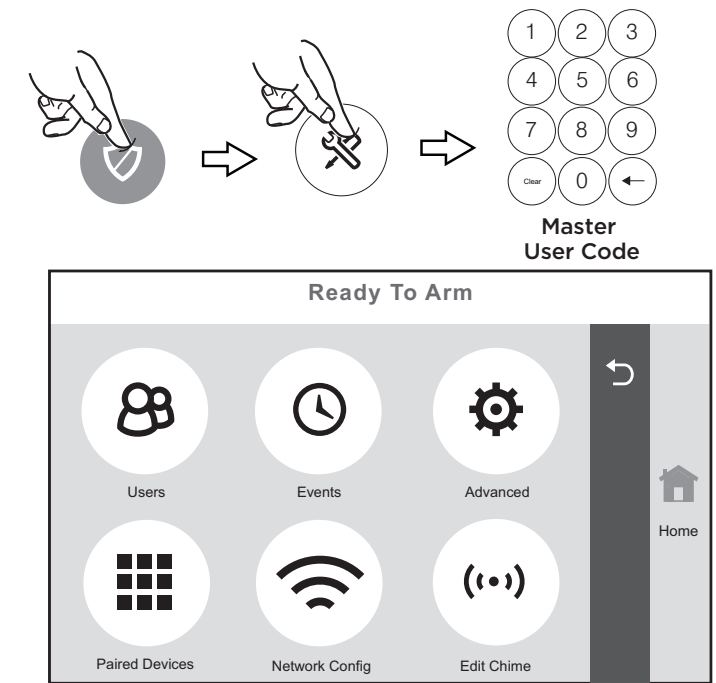


To...	Press...	Then...	The system...
Arm your system		(Away) + user code	<b>Arms</b> in Away mode
		(Home) + user code	<b>Arms</b> in Home mode
		(Custom) select the zones to bypass + user code	Custom Arming selections: <b>Arm</b> with selected zone bypassed (and unprotected), also choose to arm with Entry Delay or Instant <sup>1</sup> , and Silent Exit <sup>2</sup>
Disarm system & silence alarms		(Disarm) + enter user code	<b>Disarms</b> and <b>silences</b> sounds
Manage Zones		Zones	Select zones to bypass or clear bypass for zones. When prompted, enter a valid user code
Check System		System	Displays a list of system trouble conditions (e.g., low battery or cover tamper)
Signal an Emergency			Use the Gateway Touchpad <b>Emergency</b> options or, if programmed to do so, use your wireless key (key fob)

<sup>1</sup> In Arm Custom mode, deselect Entry Delay to choose Arm Instant. In this mode, an alarm sounds immediately if an entry/exit door is opened.

<sup>2</sup> Silent Exit means no beeps sound during the Exit Delay when arming the system.

## System Settings



Option...	Press...	Lets you...
Manage User Codes		<b>Master, Edit Guest, Edit Duress, Edit</b>
		<b>Add New</b>
Edit or delete a code for the respective user type. Assign a user name and code for other system users. Press <b>Save</b> when done.		
Check Events		Events
View system event logs.		
Manage Advanced Settings		Advanced
Access software upgrades, perform tests and other user maintenance functions.		
Check Paired Devices		Paired Devices
View a list of mobile devices paired to your Gateway		
Configure your system network		Network Config
Configure Wi-Fi connection to the Gateway		
Edit Chime tones		Edit Chimes
Change Chime sounds for select zones.		

**NOTE:** The **MyHome Gateway** App requires connection to the Gateway via the premise's Wi-Fi router (Ethernet cable or Wi-Fi). The **Total Connect** App requires internet or cellular connection for remote access to the Gateway.

## Free Manuals Download Website

<http://myh66.com>

<http://usermanuals.us>

<http://www.somanuals.com>

<http://www.4manuals.cc>

<http://www.manual-lib.com>

<http://www.404manual.com>

<http://www.luxmanual.com>

<http://aubethermostatmanual.com>

Golf course search by state

<http://golfingnear.com>

Email search by domain

<http://emailbydomain.com>

Auto manuals search

<http://auto.somanuals.com>

TV manuals search

<http://tv.somanuals.com>