



12" x 7.25" Widescreen Media Graphics Tablet



Model: CyberTablet M14



QuickGuide

For Windows™ Users

①

LIMITED WARRANTY

ADESSO provides one year limited warranty for the quality of all its products in materials and workmanship.

During this period, ADESSO will repair or replace all merchandise, which proved to be defective. However, ADESSO will not warranty any product which has been subjected to improper freight Handling, shipping abuse, neglect or unauthorized repair or installation. The warranty also will not cover products installed with Non-ADESSO components and product with broken sealed and assembly trace. After replacement of RMA, ADESSO reserves the right to request the total cost of the replacement products with broken seals or assembly trace.

If you discover a defect, Adesso will, at its option, repair or replace the product at no charge to you, provided you return it during the warranty period with transportation charges pre-paid to Adesso. You must contact Adesso at support@adesso.com for a Return Merchandise Authorization number (RMA) prior to returning any product. For each product returned for warranty service, please include your name, shipping address (no P.O. Box), telephone number, copy of the bill of sale as proof of purchase and have the package clearly marked with your RMA number.

SUPPORT

We have listed most of our FAQ's (Frequently Asked Questions) at: <http://www.adesso.com/faqs.asp>. Please visit our FAQ Service & Support pages before you contact our E-mail or Telephone Support.

Email Support: If our FAQ's do not help you resolve your issues, please email support@adesso.com

Telephone Support:
Toll Free: (800) 795-6788
9:00AM to 5:00PM PST Monday - Friday

②

INTRODUCTION

he CyberTablet M14 is one of the most spacious tablets in its class. The tablet is able to support a 12" x 7.25" or 9.5" x 7.25" selectable writing area. The tablet is great for graphic artists and animators, architects and engineers, web designers and people who love to draw. It is ideal also for students and professional who are in to handwriting, sketching, coloring and editing photos. It features a powerful pressure sensitivity to accomplish the most sophisticated computer-aided design task with the aide of 4000 lpi (lines per inch) hardware resolution and 1024 lop (level of pressure) pen sensitivity. It makes easier to use with the aide of an ergonomic pen, tablet and software which is included in the package. It lets you draw naturally and let you write freehand graphics and text, as comfortable as on a real paper.

FEATURES

- Tablets Drawing Area Dimensions: 12" x 7.25" or 9.5" x 7.25"
- Writing area with ratio of 16:9 Widescreen or 4:3
- Wireless 2 button pen with 1024 levels of pressure sensitive
- 34 Programmable Macro Keys and Two rolling pads for the right and left
- High accuracy and sensitivity for a highly reactive cursor
- 1024 gradations of pressure sensitivity for higher accuracy
- No need for separate power adapter, completely USB powered.
- High resolution, supports up to 4000 lines per inch.
- Configurable rolling pads for scrolling, zooming and volume control
- Dimensions: 12" x 10" x 0.35"

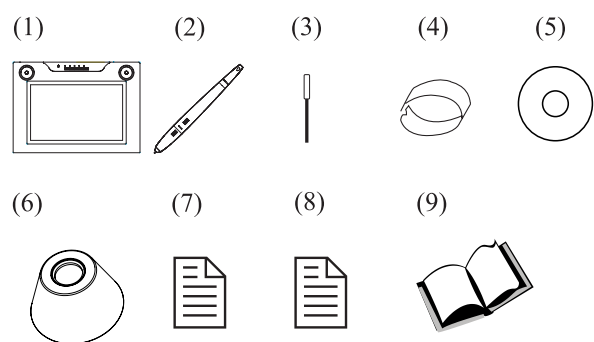
REQUIREMENTS

- Hardware: IBM, Pentium II class compatible or higher
- Operating system: Windows 8, 7, Vista, XP
Macintosh System (Intel Mac) OS X 10.6 and above
- Available USB Port
- Memory: 32 MB of RAM or higher
- DVD-ROM Drive

③

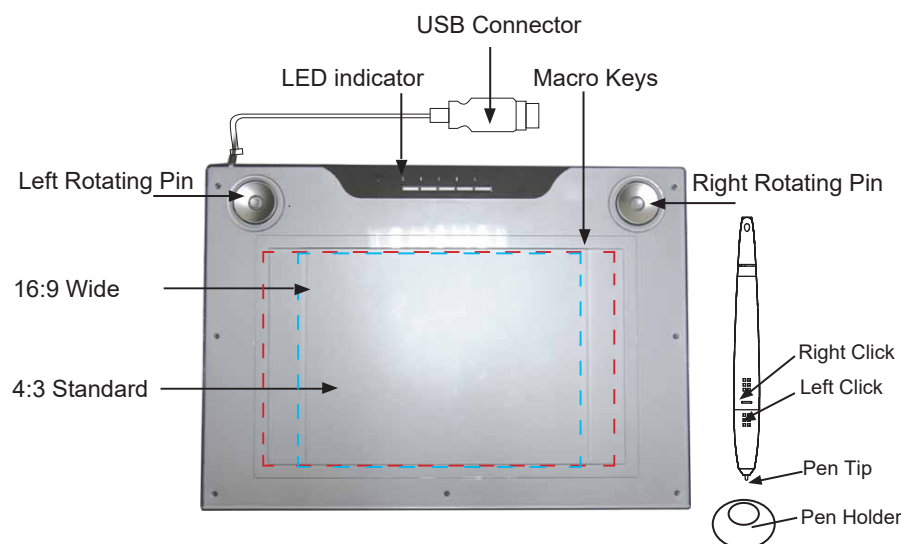
PACKAGE CONTENT

No.	Name	Qty.
(1)	14.1" Media Tablet	1
(2)	Pen	1
(3)	Pen tip	2
(4)	Tweezers	1
(5)	Disc	3
(6)	Pen Stand	1
(7)	Tablet Quick Start	1
(8)	Pen Quick Start	1
(9)	Application manual	1



④

DESCRIPTION



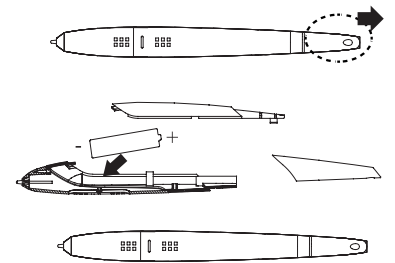
Note: The LED light on the tablet is the main indicator for hardware operation. This LED normally stays off, and will only turn it on or off in response to various conditions.

⑤

PEN INSTALLATION

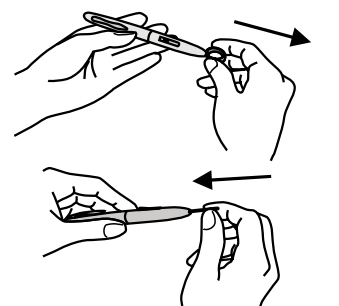
1. Battery Installation

- Pull the pen barrel
- Remove the cap and insert the battery (Use AA Battery)
- Return the cap and pen barrel



2. Changing the pen tip

- Clip the pen tip with a tweezer and pull it outward
- Insert the pen tip to the pen



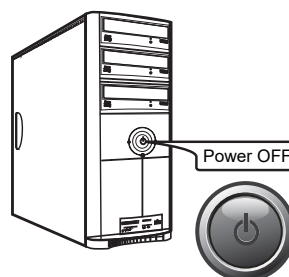
Storing the Digital Pen properly

To store the Digital Pen, make sure that the tip does not touch anything, especially if the pen is in a cup holder with the tip down. Pressure applied to the pen tip will cause a constant drain on the pen's battery. It is recommended to place the pen in a pen holder or store it with the pen tip pointing upward, or place it horizontally with the pen tip free of any other objects.

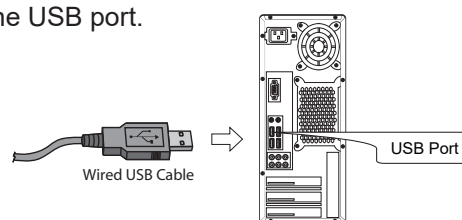
⑥

TABLET INSTALLATION

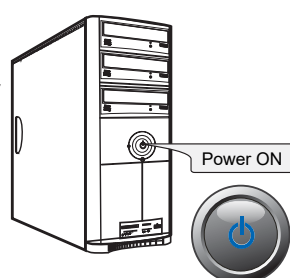
- Make sure that your computer is turned OFF before installing the tablet. Your tablet requires a USB port.



- Plug in the USB cable to the USB port.



- Turn ON your computer and your operating system will detect the device automatically. Proceed to Driver Installation



⑦

DRIVER INSTALLATION

- Insert the Pen Pad Driver CD into your computer's CD-ROM drive for installation. (If the software installer menu does not automatically run, please double click on the install icon and follow the prompts to connect your tablet hardware and install the Pen Pad Driver.)
- Click the **Pen Pad Driver** and follow the on screen procedure. After the driver is installed, click **OK** and restart your computer.



Note:

Remove any existing Tablet driver and restart your system before installing the Pen Pad Driver (Macro Key Manager). The driver is needed to for advance Macro Key controls and functions. You can use the most basic tablet functions without installing the Pen Pad Driver (Macro Key Manager).

⑧

Frequently Asked Question

Question 1: The tablet does not work. What can I do?

Answer: Please follow these steps below:

- Pull out the tablet's USB plug from the computer.
 - Remove the Tablet Driver from the system.
 - Re-connect the Tablet's USB to the computer.
 - Check whether the tablet's LED is blinking or not. If the LED is unlit, this means your tablet is faulty.
 - Test your wireless digital pen on the tablet's working area, if it can work as a mouse, the hardware is OK. If it doesn't work, please change the battery.
 - After you have changed the battery of the pen and it still not working, this means the hardware is faulty.
 - You can download the latest version of driver directly from our website.
 - After installing the new version of driver, the system will require you to restart your computer.
 - After restart your computer, on bottom right of the screen, you will see the tablet icon ().
 - If you can't find the tablet icon () on the bottom right of the screen, it means the driver failed in startup, it might be caused by an incompatible hardware or software issue.
 - Check from [My Computer] ► [Properties] ► [Hardware] ► [Device Manager], if there is an exclamation mark, it means that the installed driver of the tablet is incompatible with the Windows system. If you have this problem, please contact us for more information.
 - By clicking the tablet icon () on the bottom right of the screen, you can test the pressure sensitivity to see whether the pen pressure function works or not. (Please read the e-manual on the included CD for Pen tablet configuration details).
- Note: If you do not have pen pressure, it means the pen might be faulty. Please contact Adesso Tech Support.**

⑨

Free Manuals Download Website

<http://myh66.com>

<http://usermanuals.us>

<http://www.somanuals.com>

<http://www.4manuals.cc>

<http://www.manual-lib.com>

<http://www.404manual.com>

<http://www.luxmanual.com>

<http://aubethermostatmanual.com>

Golf course search by state

<http://golfingnear.com>

Email search by domain

<http://emailbydomain.com>

Auto manuals search

<http://auto.somanuals.com>

TV manuals search

<http://tv.somanuals.com>